

Excellent Integrated System Limited

Stocking Distributor

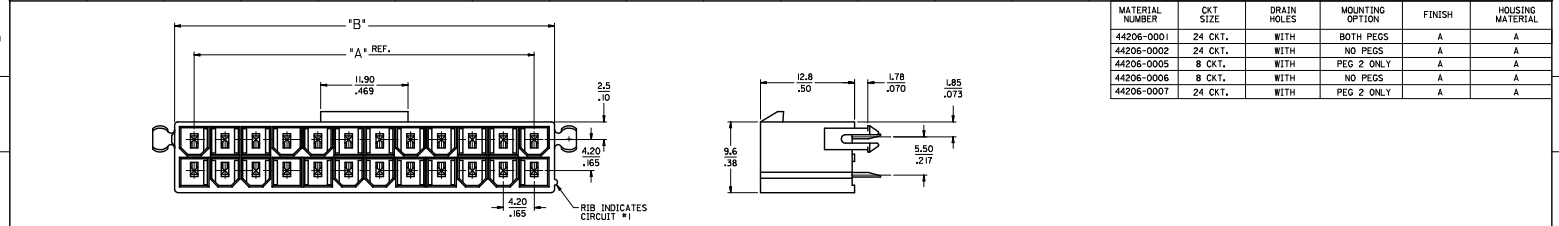
Click to view price, real time Inventory, Delivery & Lifecycle Information:

[Molex Connector Corporation](#)
[0442060007](#)

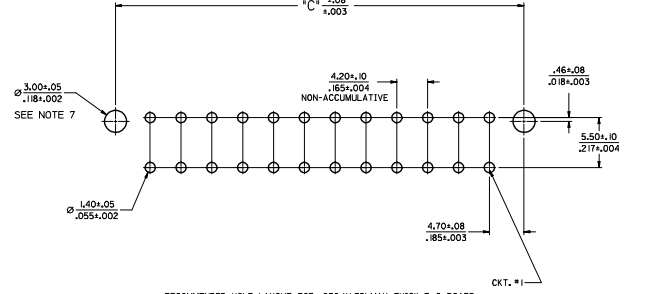
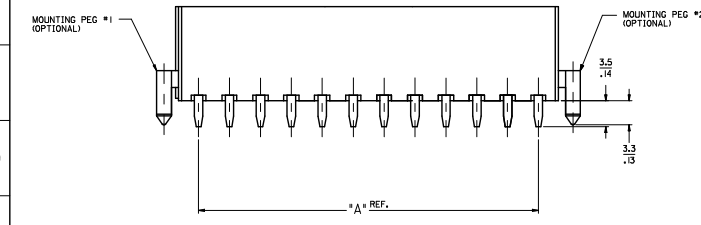
For any questions, you can email us directly:

sales@integrated-circuit.com

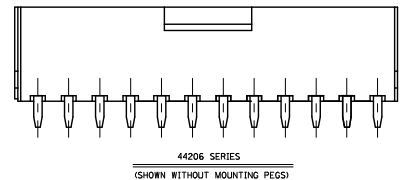
20 19 18 17 16 15 14 13 12 11 10 9 8 7 6 5 4 3 2 1



MATERIAL NUMBER	CKT SIZE	DRAIN HOLES	MOUNTING OPTION	FINISH	HOUSING MATERIAL
44206-0001	24 CKT.	WITH	BOTH PEGS	A	A
44206-0002	24 CKT.	WITH	NO PEGS	A	A
44206-0005	8 CKT.	WITH	PEG 2 ONLY	A	A
44206-0006	8 CKT.	WITH	NO PEGS	A	A
44206-0007	24 CKT.	WITH	PEG 2 ONLY	A	A



- NOTES:
- HOUSING MATERIAL:
A - NYLON 6/6, U.L. 94V-2, COLOR: NATURAL.
B - NYLON 6/6, U.L. 94V-0, COLOR: NATURAL.
TERMINAL MATERIAL: BRASS ALLOY
 - FINISH
A - .000025/(.00090) MIN. BRIGHT TIN OVER .000020/(.00050) MIN. COPPER
B - .000030/(.00076) MIN. SELECT GOLD AND .000100/(.00254) MIN. SELECT MATTE TIN, OVER .000050/(.00127) MIN. NICKEL OVERALL.
C - .000015/(.00038) MIN. SELECT GOLD AND .000100/(.00254) MIN. SELECT MATTE TIN, OVER .000050/(.00127) MIN. NICKEL OVERALL.
 - PRODUCT SPECIFICATION: PS-5556-001
 - PACKAGING SPECIFICATION: PK-44206-001
 - PART MATES WITH MINI-FIT JR. RECEPTACLE #5557.
 - MOUNTING OPTIONS: SEE CHART
 - LOCATION OF 3.00/(.118) DIA. HOLES ON P.C. BOARD IS FOR OPTIONAL PEGS.
 - CONNECTOR ASSEMBLIES ARE NOT TO BE MATED OR UNMATED WHILE CIRCUITS ARE LIVE.
 - PART CONFORMS TO CLASS "B" REQUIREMENTS OF COSMETIC SPECIFICATION PS-45499-002.
 - PARTS ARE NOT DESIGNED FOR CURRENT SHARING.



CIRCUIT SIZE	DIM. "A"	DIM. "B"	DIM. "C"
8	.50	.71	.866
10	.66	.87	1.031
12	.83	1.04	1.197
14	.99	1.20	1.362
16	1.16	1.37	1.528
18	1.32	1.54	1.693
20	1.49	1.70	1.858
22	1.65	1.87	2.024
24	1.82	2.03	2.189

ADD NOTES 7, 9, 10 EC NO. UCP205-3048 DRAWINGS 2015/01/29 CHECKED 2015/02/02 APPROVED BY DESIGNED BY	QUALITY SYMBOLS ∇=0 ∇=0 ∇=0	GENERAL TOLERANCES (UNLESS SPECIFIED) <table border="1"> <tr> <th></th> <th>mm</th> <th>INCH</th> </tr> <tr> <td>4 PLACES</td> <td>±.005</td> <td>±.0005</td> </tr> <tr> <td>3 PLACES</td> <td>±.01</td> <td>±.001</td> </tr> <tr> <td>2 PLACES</td> <td>±.025</td> <td>±.0025</td> </tr> <tr> <td>1 PLACE</td> <td>±.05</td> <td>±.005</td> </tr> </table>		mm	INCH	4 PLACES	±.005	±.0005	3 PLACES	±.01	±.001	2 PLACES	±.025	±.0025	1 PLACE	±.05	±.005	DIMENSION STYLE MM/IN SCALE 4:1 DESIGN UNITS METRIC THIRD ANGLE PROJECTION	DRAWN BY L. MOSLEY DATE 07/03/98 CHECKED BY BANDURA DATE 07/03/98 APPROVED BY EDGLEY DATE 07/03/98	MATERIAL NO. SEE CHART DOCUMENT NO. SDA-44206-001 SHEET NO. 1 OF 1
		mm	INCH																	
	4 PLACES	±.005	±.0005																	
	3 PLACES	±.01	±.001																	
2 PLACES	±.025	±.0025																		
1 PLACE	±.05	±.005																		
MINI-FIT JR. VERTICAL HEADER ASSEMBLY W/O PEGS, WITH DRAIN HOLES																				
DRAFT WHERE APPLICABLE MUST REMAIN WITHIN DIMENSIONS THIS DRAWING CONTAINS INFORMATION THAT IS PROPRIETARY TO MOLEX INCORPORATED AND SHOULD NOT BE USED WITHOUT WRITTEN PERMISSION																				

19 18 17 16 15 14 13 12 11 10 9 8 7 6 5 4 3 2 1