

Excellent Integrated System Limited

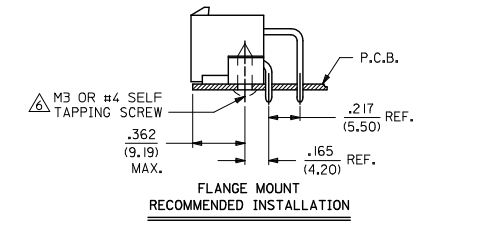
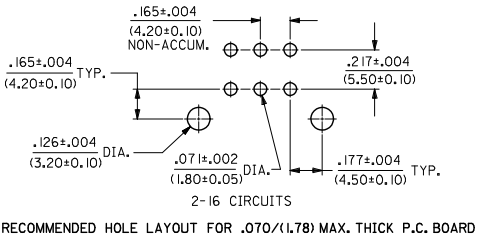
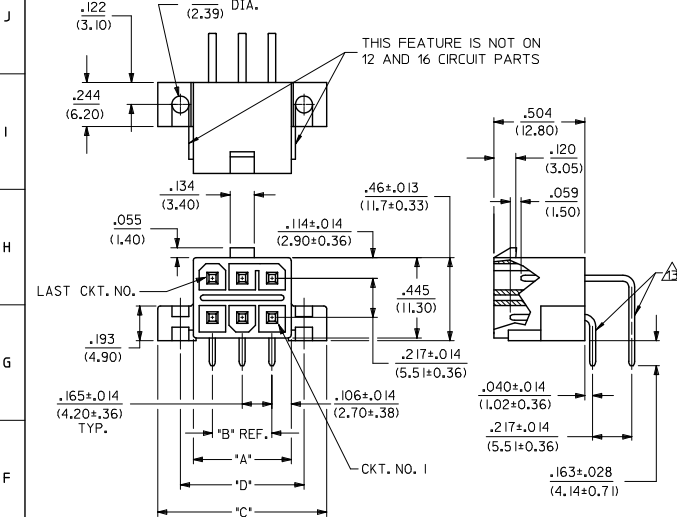
Stocking Distributor

Click to view price, real time Inventory, Delivery & Lifecycle Information:

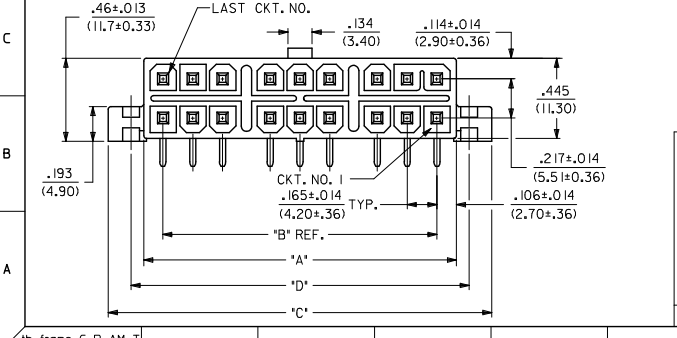
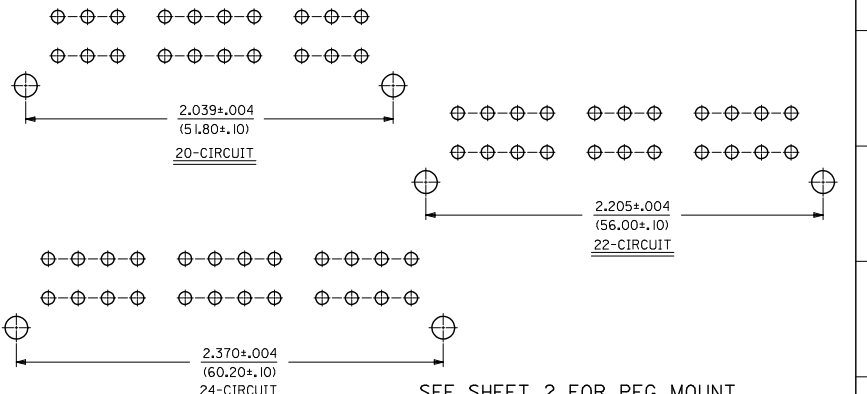
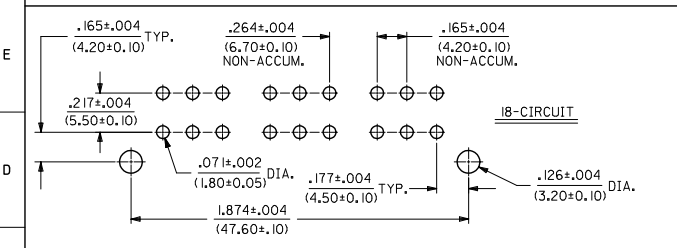
[Molex Connector Corporation](#)
[0444830011](#)

For any questions, you can email us directly:
sales@integrated-circuit.com

13 12 11 10 9 8 7 6 5 4 3 2 1

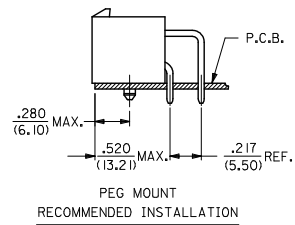
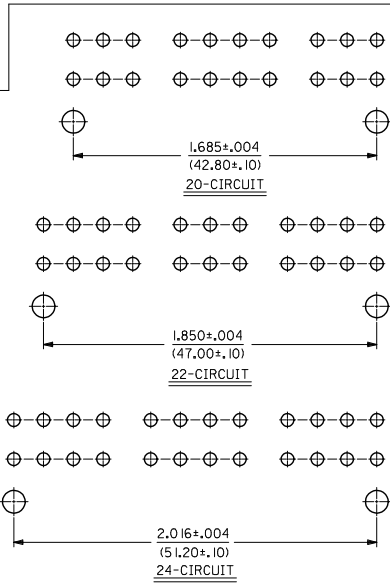
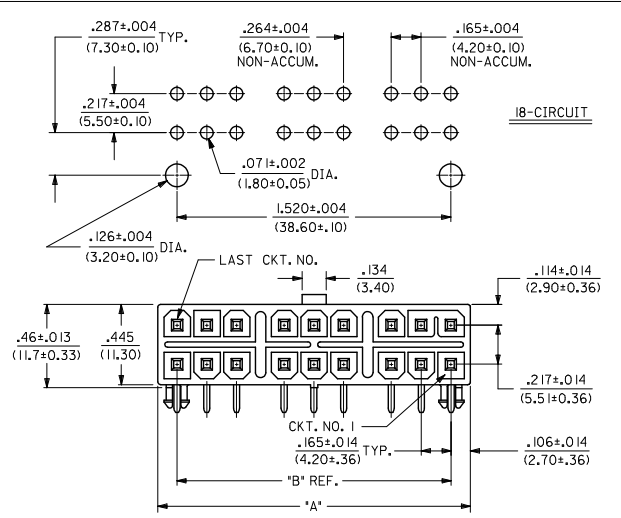
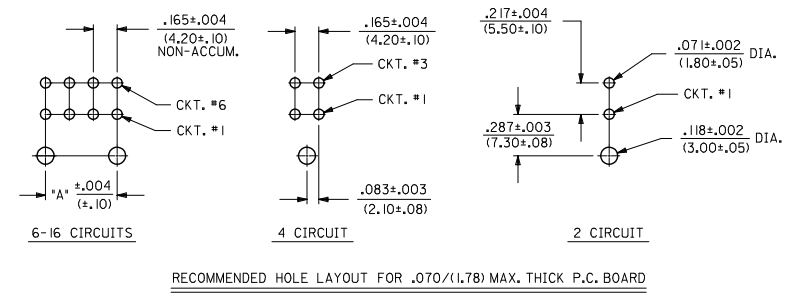
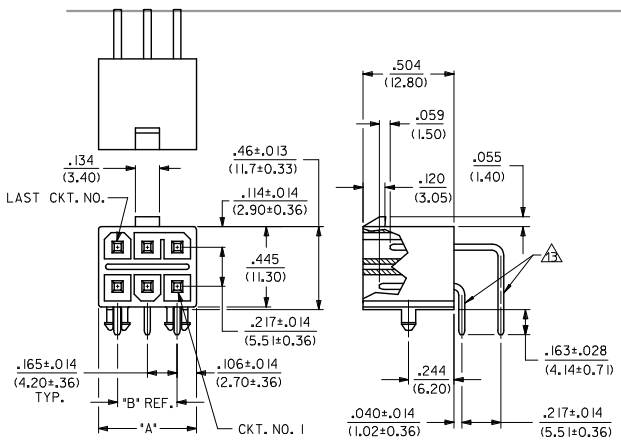


CKT. SIZE	DIM. 'A'	DIM. 'B'	DIM. 'C'	DIM. 'D'
2	.213 (5.40)	—	.606 (15.40)	.354 (9.00)
4	.378 (9.60)	.165 (4.20)	.772 (19.60)	.520 (13.20)
6	.543 (13.80)	.331 (8.40)	.937 (23.80)	.685 (17.40)
8	.709 (18.00)	.496 (12.60)	1.102 (28.00)	.850 (21.60)
10	.874 (22.20)	.661 (16.80)	1.268 (32.20)	1.016 (25.80)
12	1.039 (26.40)	.827 (21.00)	1.433 (36.40)	1.181 (30.00)
14	1.205 (30.60)	.992 (25.20)	1.598 (40.60)	1.346 (34.20)
16	1.370 (34.80)	1.157 (29.40)	1.764 (44.80)	1.512 (38.40)
18	1.732 (44.00)	1.520 (38.60)	2.126 (54.00)	1.874 (47.60)
20	1.898 (48.20)	1.685 (42.80)	2.291 (58.20)	2.039 (51.80)
22	2.063 (52.40)	1.850 (47.00)	2.457 (62.40)	2.205 (56.00)
24	2.228 (56.60)	2.016 (51.20)	2.622 (66.60)	2.370 (60.20)



UPDATE NOTE 6	QUALITY SYMBOLS	GENERAL TOLERANCES (UNLESS SPECIFIED)		DIMENSION STYLE		SCALE	DESIGN UNITS	THIRD ANGLE PROJECTION	
		mm	INCH	IN/MM	DATE			TITLE	METRIC
EC NO: UCP2014-0238	▽=0	4 PLACES	±---	±---	DRAWN BY	2:1	METRIC	RIGHT ANGLE	RIGHT ANGLE HEADER ASSY SELECTIVELY LOADED MINI-FIT T.P.A. SERIES
2013/08/02	▽=0.10	3 PLACES	±---	±.010	DATE				
DRW: NGUYEN	▽=0.25	2 PLACES	±0.25	±.014	CHECKED BY				
CHKD: BELL	▽=0.36	1 PLACE	±0.36	±---	RJF				
APPR: SMITH	ANGULAR ±1/2°	0 PLACE	±	±	APPROVED BY				
	DRAFT WHERE APPLICABLE MUST REMAIN WITHIN DIMENSIONS				F SMITH				
					DATE				
					2011/09/12				
					MATERIAL NO.				
					SEE CHART				
					DOCUMENT NO.				
					SDA-44483-****				
					SHEET NO.				
					1 OF 3				

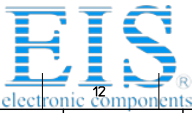
1b_frame_C.P.A.M.T Rev. G 2012/01/11 12 11 10 9 8 7 6 5 4 3 2 1



CKT. SIZE	DIM. 'A'	DIM. 'B'
2	.213 (5,40)	—
4	.378 (9,60)	.165 (4,20)
6	.543 (13,80)	.331 (8,40)
8	.709 (18,00)	.496 (12,60)
10	.874 (22,20)	.661 (16,80)
12	1.039 (26,40)	.827 (21,00)
14	1.205 (30,60)	.992 (25,20)
16	1.370 (34,80)	1.157 (29,40)
18	1.532 (39,00)	1.322 (33,60)
20	1.698 (43,20)	1.487 (37,80)
22	1.863 (47,40)	1.652 (42,00)
24	2.028 (51,60)	1.817 (46,20)

SEE SHEET 1 FOR FLANGE MOUNT

SEE SHEET 1 EC NO: UCP204-0298 2013/08/02 DRAWING: NGUYEN CHKD: BELL 2013/08/02 APPROV: SMITH 2013/08/16	QUALITY SYMBOLS □=0 □=0 □=0	GENERAL TOLERANCES (UNLESS SPECIFIED) mm INCH	DIMENSION STYLE IN/MM	SCALE 2:1	DESIGN UNITS METRIC	THIRD ANGLE PROJECTION		
		4 PLACES ± --- ± --- 3 PLACES ± --- ± .010 2 PLACES ± 0.25 ± .014 1 PLACE ± 0.36 ± --- 0 PLACE ± ±	DRAWN BY GEP DATE 1994/08/01	CHECKED BY R/JF DATE 1994/08/01	APPROVED BY F/SMITH DATE 2011/09/12	TITLE RIGHT ANGLE HEADER ASSY SELECTIVELY LOADED MINI-FIT T.P.A. SERIES		
		ANGULAR ±1/2° DRAFT WHERE APPLICABLE MUST REMAIN WITHIN DIMENSIONS	MATERIAL NO. SEE CHART	DOCUMENT NO. SDA-44483-****	molex			
		SIZE C	THIS DRAWING CONTAINS INFORMATION THAT IS PROPRIETARY TO MOLEX INCORPORATED AND SHOULD NOT BE USED WITHOUT WRITTEN PERMISSION					



Distributor of Molex Connector Corporation: Excellent Integrated System Limited

Datasheet of 0444830011 - MINI-FIT TPA HDR ASSY 12CKT TIN

Contact us: sales@integrated-circuit.com Website: www.integrated-circuit.com

ITEM NO.	CHARACTERISTIC DESCRIPTION	CKT. SIZE	TERMINAL VERSION REQUIRED AT EACH CIRCUIT LOCATION (SEE CODES BELOW)																								PACKAGING TYPE
			1	2	3	4	5	6	7	8	9	10	11	12	13	14	15	16	17	18	19	20	21	22	23	24	
44483-0001	I2A1C	I2	5	5	5	6	5	5	5	5	5	-	5	5	-	-	-	-	-	-	-	-	-	-	-	BULK	
44483-0002	I2A2C	I2	5	5	5	6	5	5	5	5	5	5	5	5	-	-	-	-	-	-	-	-	-	-	-	BULK	
44483-0003	I2A1C	I2	5	5	5	6	5	5	5	5	5	5	5	-	-	-	-	-	-	-	-	-	-	-	TRAY		
44483-0004	04A2C	04	5	5	6	5	-	-	-	-	-	-	-	-	-	-	-	-	-	-	-	-	-	-	BULK		
44483-0005	04A2A	04	7	7	8	7	-	-	-	-	-	-	-	-	-	-	-	-	-	-	-	-	-	-	BULK		
44483-0006	I2A1C	I2	5	5	5	6	-	5	5	5	5	5	5	5	-	-	-	-	-	-	-	-	-	-	BULK		
44483-0007	I6A2A	I6	7	7	8	7	7	8	8	7	8	7	8	7	8	7	8	-	-	-	-	-	-	-	BULK		
44483-0008	I2A1C	I2	5	-	6	6	-	5	-	5	5	5	5	-	-	-	-	-	-	-	-	-	-	-	BULK		
44483-0009	06A2C	06	5	5	6	5	5	5	-	-	-	-	-	-	-	-	-	-	-	-	-	-	-	-	BULK		
44483-0010	06A1C	06	5	-	6	5	-	5	-	-	-	-	-	-	-	-	-	-	-	-	-	-	-	-	BULK		
44483-0011	I2A3A	I2	7	7	7	7	7	7	7	7	-	7	7	-	-	-	-	-	-	-	-	-	-	-	BULK		
44483-0012	I2A1C	I2	5	5	5	6	5	5	5	5	5	-	5	5	-	-	-	-	-	-	-	-	-	-	BULK		
44483-0013	I2A1C	I2	5	5	5	6	-	5	5	5	5	-	5	5	-	-	-	-	-	-	-	-	-	-	TRAY		
44483-0014	I2A4D	I2	7	7	7	7	7	7	5	7	7	7	7	-	-	-	-	-	-	-	-	-	-	-	TRAY		
44483-0015	I2B3A	I2	-	7	7	7	7	-	-	7	7	-	7	7	-	-	-	-	-	-	-	-	-	-	TRAY		
44483-0016	I2A2C	I2	6	6	5	5	6	6	6	6	5	5	6	6	-	-	-	-	-	-	-	-	-	-	TRAY		
44483-0017	04A1C	04	-	5	6	5	-	-	-	-	-	-	-	-	-	-	-	-	-	-	-	-	-	-	TRAY		
44483-0018	04A1C	04	5	-	6	5	-	-	-	-	-	-	-	-	-	-	-	-	-	-	-	-	-	-	TRAY		
44483-0019	04A1C	04	5	5	6	-	-	-	-	-	-	-	-	-	-	-	-	-	-	-	-	-	-	-	TRAY		

CHARACTERISTICS LEGEND:

- CIRCUIT SIZE (02-24)
 HOUSING STYLE
 A = FLANGES
 B = PEGS
 VOIDS
 1 = WITH VOIDS, WITH GROUND PIN
 2 = W/O VOIDS, WITH GROUND PIN
 3 = WITH VOIDS, W/O GROUND PIN
 4 = W/O VOIDS, W/O GROUND PIN
 PLATING COMBINATION (SEE NOTE 2)
 A = MATTE TIN
 C = SELECT GOLD
 D = MIXED PLATINGS

- NOTES:
 1. MATERIAL:
 HOUSING: POLYESTER, UNFILLED, UL94 V-0, COLOR: BLACK
 TERMINAL: BRASS
 2. FINISH (TERMINAL):
 SELECT GOLD = .00030/(.00076) MIN, GOLD OVER .000100/(.00254) MIN, SELECT MATTE TIN OVER .00050/(.00127) MIN, NICKEL OVERALL
 MATTE TIN = .000100/(.00254) MIN MATTE TIN OVER .00050/(.00127) MIN NICKEL OVERALL
 3. PRODUCT SPECIFICATION: PS-5556-003
 4. PACKAGING: SEE CHART
 TRAY PACKED PER: PK-44483-001
 BULK PACKED PER: PK-30070-001
 5. PART MATES WITH MINI-FIT T.P.A. RECEPTACLE 30067-x.
 FLANGE MOUNT PART IS DESIGNED FOR USE WITH #4 OR M3 SELF TAPPING SCREWS.
 7. SEE CHART ABOVE FOR STANDARD PIN, GROUND PIN AND VOID LOCATIONS.
 8. PARTS ARE NOT TO BE MATED OR UNMATED WHILE CIRCUITS ARE LIVE.
 9. PART IS NOT DESIGNED FOR CURRENT SHARING.
 10. ITEM NUMBERS PRECEDED BY AND "X" IN THE CHART ABOVE ARE NOT AVAILABLE.
 11. PART CONFORMS TO CLASS "B" REQUIREMENTS OF COSMETIC SPECIFICATION PS-45499-002.
 12. DISCOLORATION IN THE BANDOLIER CARRIER AREA OF THE PIN IS INHERENT TO THE PLATING PROCESS AND IS DUE TO THE MASKING EFFECT OF THE CARRIER. THIS DISCOLORATION IS IN A NON-FUNCTIONAL AREA OF THE PIN AND WILL NOT AFFECT THE PERFORMANCE OF THE HEADER ASSEMBLY.
 FORMING MARKS ARE ACCEPTABLE.

PIN I.D. CODES FOR CHART ABOVE	
PIN TYPE & PLATING (SEE NOTE 2)	
1	= VOID LOC.
5	= STANDARD PIN, SELECT GOLD
6	= GROUNDING PIN, SELECT GOLD
7	= STANDARD PIN, MATTE TIN
8	= GROUNDING PIN, MATTE TIN

REV	DESCRIPTION	DATE
	APPROVED BY	DATE
E4	DRW: NGUYEN	2013/08/02
	CHKD: BELL	2013/08/02
	APPR: SMITH	2013/08/16

QUALITY SYMBOLS	GENERAL TOLERANCES (UNLESS SPECIFIED)	
	mm	INCH
▽=0	4 PLACES ±---	±---
▽=0	3 PLACES ±---	±.010
▽=0	2 PLACES ±0.25	±.014
▽=0	1 PLACE ±0.36	±---
▽=0	0 PLACE ±	±
	ANGULAR ±1/2°	

REV	DESCRIPTION	DATE
	APPROVED BY	DATE
E4	DRW: NGUYEN	2013/08/02
	CHKD: BELL	2013/08/02
	APPR: SMITH	2013/08/16

REV	DESCRIPTION	DATE
	APPROVED BY	DATE
E4	DRW: NGUYEN	2013/08/02
	CHKD: BELL	2013/08/02
	APPR: SMITH	2013/08/16

REV	DESCRIPTION	DATE
	APPROVED BY	DATE
E4	DRW: NGUYEN	2013/08/02
	CHKD: BELL	2013/08/02
	APPR: SMITH	2013/08/16