

Excellent Integrated System Limited

Stocking Distributor

Click to view price, real time Inventory, Delivery & Lifecycle Information:

[Molex Connector Corporation](#)
[0445371002](#)

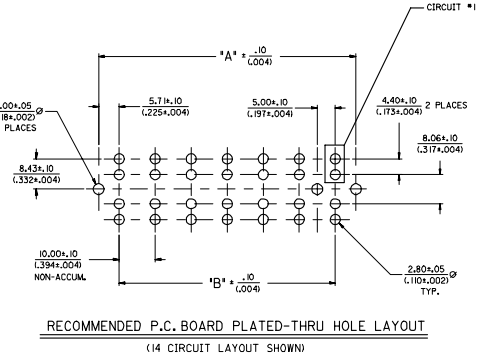
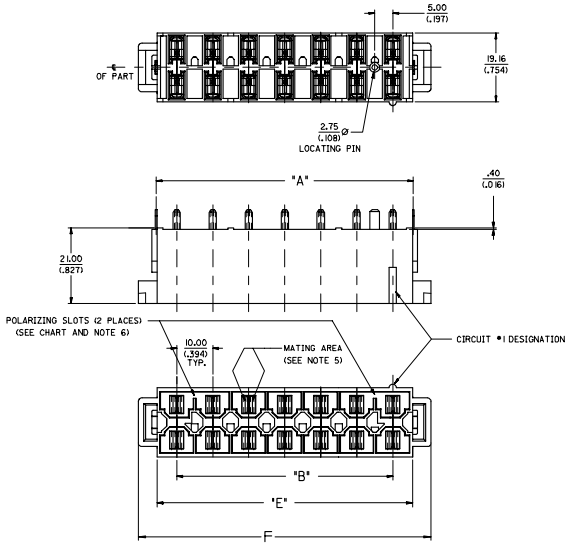
For any questions, you can email us directly:

sales@integrated-circuit.com

MATERIAL NUMBER	CIRCUITS	DIM. 'A'	DIM. 'B'	DIM. 'C'	DIM. 'D'	DIM. 'E'	DIM. 'F'	PCB THICKNESS	POLARIZING SLOTS	
									PRESENT	QTY.
44537-1001	6	31.41/(1.237)	20.00/(.787)	8.30/(.328)	3.40/(.134)	30.90/(1.217)	11.31/(.449)	6.00/(.236)	YES	1
44537-1002	8	41.41/(1.630)	30.00/(1.181)	8.30/(.328)	3.40/(.134)	40.90/(1.610)	11.31/(.449)	MUST BE MODIFIED TO ACCEPT 3.4mm CLIP	YES	2
44537-1003	10	51.41/(2.024)	40.00/(1.575)	8.30/(.328)	3.40/(.134)	50.90/(2.004)	11.31/(.449)		YES	2
44537-1004	12	61.41/(2.418)	50.00/(1.969)	8.30/(.328)	3.40/(.134)	60.90/(2.398)	11.31/(.449)		YES	2
44537-1005	14	71.41/(2.812)	60.00/(2.362)	8.30/(.328)	3.40/(.134)	70.90/(2.783)	11.31/(.449)		YES	2

NOTES

- MATERIALS:
HOUSING: 30% GLASS FILLED NYLON 4/6, ULL 94V-0, COLOR: BLACK.
TERMINAL: ALLOY 151 PLATING: TIN-LEAD OVER NICKEL.
- PRODUCT SPEC.: PSX-42815-0001
- USES STANDARD 42874 MINI-FIT SR. HEADER TERMINALS.
- PART MATES WITH MOLEX RECEPTACLE 4394.
- FOR HIGH VIBRATION APPLICATIONS, MOLEX STRONGLY RECOMMENDS THE USE OF NYE LUBRICANT NYOGEOL 7600 ON THE MATING SURFACES OF THE TERMINALS.
- POLARIZING SLOTS TO BE LOCATED BETWEEN CIRCUITS ON EITHER END OF HOUSING OF THE CIRCUIT 1 ROW, AS SHOWN.
EXCEPTION: THE 6 CIRCUIT HOUSING WILL HAVE A SINGLE SLOT ON THE CIRCUIT 1 END ONLY.



ADDED DIM. F EC NO. UCF2006-1765 DRAWN BY: COMERC CHECKED BY: COMERC DATE: 2006/10/24 REVISION: 2006/10/24	QUALITY SYMBOLS	GENERAL TOLERANCES (UNLESS SPECIFIED)	DIMENSION STYLE	SCALE	DESIGN UNITS	THIRD ANGLE PROJECTION														
	$\nabla=0$ $\nabla=0$	<table border="1"> <tr><th>MIL</th><th>INCH</th></tr> <tr><td>± .008</td><td>± .0008</td></tr> <tr><td>± 0.20</td><td>± .008</td></tr> <tr><td>± .000</td><td>± .000</td></tr> <tr><td>± .000</td><td>± .000</td></tr> <tr><td>± .000</td><td>± .000</td></tr> <tr><td>± .000</td><td>± .000</td></tr> </table>	MIL	INCH	± .008	± .0008	± 0.20	± .008	± .000	± .000	± .000	± .000	± .000	± .000	± .000	± .000	MM/IN	2:1	METRIC	<input checked="" type="checkbox"/> THIRD ANGLE PROJECTION
	MIL	INCH																		
	± .008	± .0008																		
± 0.20	± .008																			
± .000	± .000																			
± .000	± .000																			
± .000	± .000																			
± .000	± .000																			
DRAFT WHERE APPLICABLE MUST REMAIN WITHIN DIMENSIONS	SEE CHART THIS DRAWING CONTAINS INFORMATION THAT IS PROPRIETARY TO MOLEX INCORPORATED AND SHOULD NOT BE USED WITHOUT WRITTEN PERMISSION	MATERIAL NO. DOCUMENT NO. SD-44537-001	DATE 8/10/99	TITLE VERTICAL HEADER DUAL ROW, 6-14 CIRCUIT MINI-FIT SR.	SHEET NO. 1 OF 1															
MOLEX INCORPORATED																				