

Excellent Integrated System Limited

Stocking Distributor

Click to view price, real time Inventory, Delivery & Lifecycle Information:

[Molex Connector Corporation](#)
[0460140304](#)

For any questions, you can email us directly:

sales@integrated-circuit.com

13

12

11

10

9

8

7

6

5

4

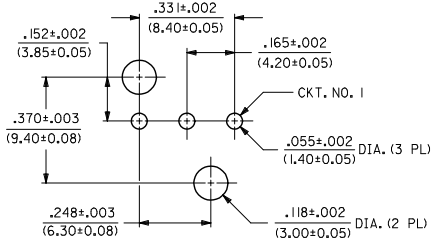
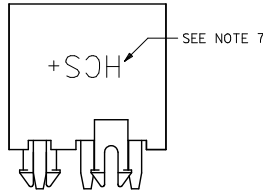
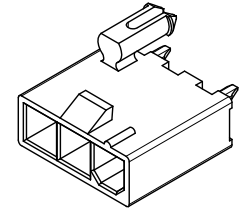
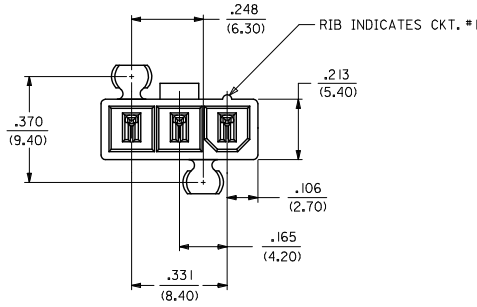
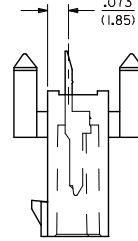
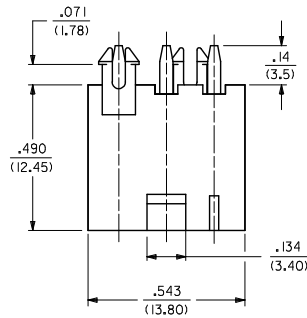
3

2

1

NOTES:

- 1) MATERIALS:
HOUSING: 1 - NYLON 6/6, UNFILLED UL 94V-2, COLOR: NATURAL
2 - NYLON 6/6, UNFILLED UL 94V-0, COLOR: NATURAL
TERMINALS: COPPER ALLOY
- 2) TERMINAL PLATING:
1 - .000100/(.00254) MIN. MATTE TIN OVER
.000050/(.00127) MIN. NICKEL OVERALL
2 - .000030/(.00076) MIN. SELECT GOLD AND
.000100/(.00254) MIN. SELECT MATTE TIN OVER
.000050/(.00127) MIN. NICKEL OVERALL
- 3) PRODUCT SPECIFICATION: PS-45750-001
- 4) PACKAGING: TRAY PACK PER PK-5566-002
- 5) PART MATES WITH WITH MINI-FIT JR. RECEPTACLE #5557.
- 6) PART IS NOT DESIGNED FOR CURRENT SHARING.
- 7) PARTS TO HAVE 'HCS+' MARKING.
- 8) PART CONFORMS TO CLASS 'B' REQUIREMENTS OF COSMETIC SPECIFICATION PS-45499-002.



RECOMMENDED HOLE LAYOUT FOR
.070/(1.78) MAX. THICK P.C. BOARD

UPDATE TOLERANCES EC NO: UCP2015-0706 DRAWN BY: WINDUEN 2012/08/20 CHKD: BELL 2012/08/20 APPROV: SMITH 2012/09/05	QUALITY SYMBOLS ∇=0 ∇=0 ∇=0	GENERAL TOLERANCES (UNLESS SPECIFIED)		DIMENSION STYLE IN/MM		SCALE 4:1	DESIGN UNITS METRIC	THIRD ANGLE PROJECTION
		4 PLACES ± --- ± --- 3 PLACES ± --- ± .010 2 PLACES ± 0.25 ± .020 1 PLACE ± 0.50 ± --- 0 PLACE ± ±	DRAWN BY: T GREGORI CHECKED BY: J COMERC I APPROVED BY: F SMITH	DATE: 2006/04/27 DATE: 2006/04/27 DATE: 2010/04/09	TITLE VERTICAL HEADER ASSEMBLY SINGLE ROW, 3 CKT MINI-FIT PLUS HCS SERIES			
MATERIAL NO. SEE CHART	ANGULAR ±1/2° DRAFT WHERE APPLICABLE MUST REMAIN WITHIN DIMENSIONS	SIZE C	THIS DRAWING CONTAINS INFORMATION THAT IS PROPRIETARY TO MOLEX INCORPORATED AND SHOULD NOT BE USED WITHOUT WRITTEN PERMISSION		DOCUMENT NO. SD-46014-003	SHEET NO. 1 OF 1		

ITEM NO.	HOUSING MATERIAL	PLATING	VOID CIRCUIT
46014-0304	V-0	TIN	NONE
46014-0305	V-2		
46014-0306	V-0	GOLD	
46014-0307	V-2		

12

11

10

9

8

7

6

5

4

3

2

1