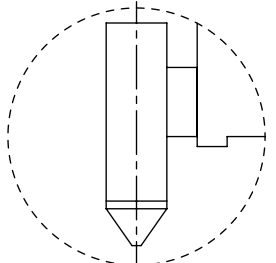
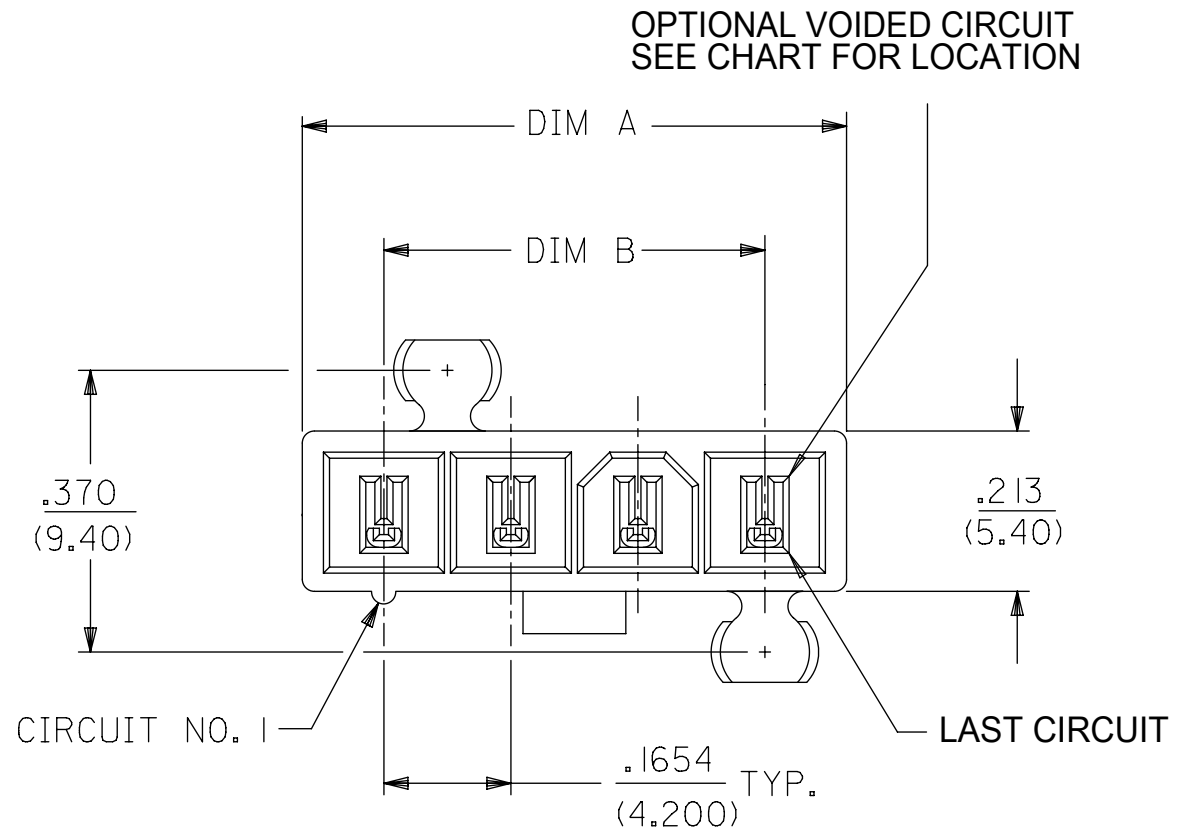
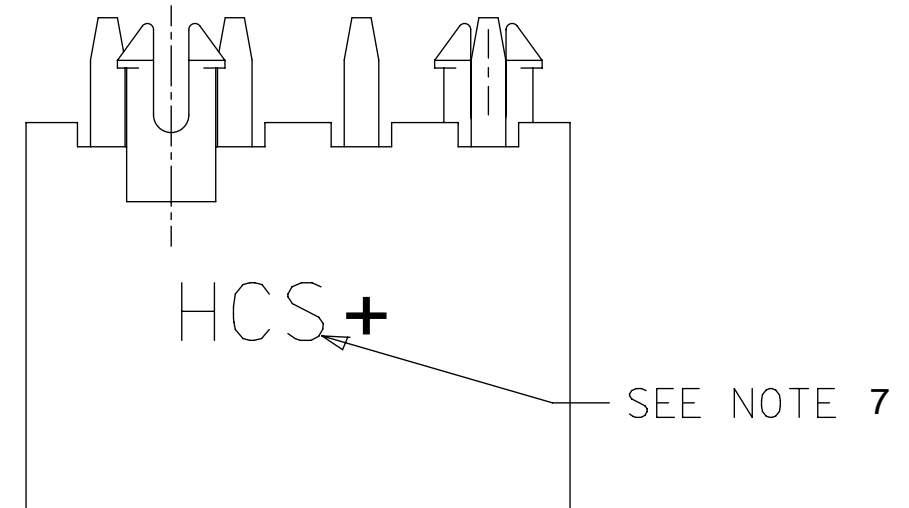
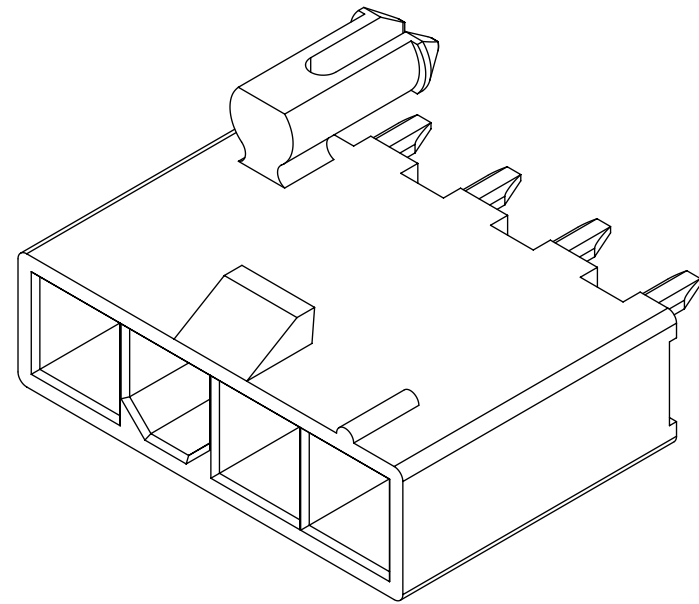


ITEM NO.	CKT SIZE	HOUSING MATERIAL	PLATING	DIM A	DIM B	VOIDED CIRCUITS
46014-0204	2	V-0	TIN	.378 (9.60)	.165 (4.20)	NONE
46014-0205		V-2				
46014-0206		V-0	GOLD			
46014-0207		V-2				
46014-0404	4	V-0	TIN	.709 (18.00)	.496 (12.60)	
46014-0405		V-2				
46014-0406		V-0	GOLD			
46014-0407		V-2				
46014-0503	5	V-0	TIN	.874 (22.20)	.661 (16.80)	
46014-0504		V-0	GOLD			
46014-0604	6	V-0	TIN	1.039 (26.40)	.827 (21.00)	
46014-0605		V-2				
46014-0606		V-0	GOLD			
46014-0607		V-2				

PART NUMBERS WITH VOIDED CIRCUITS

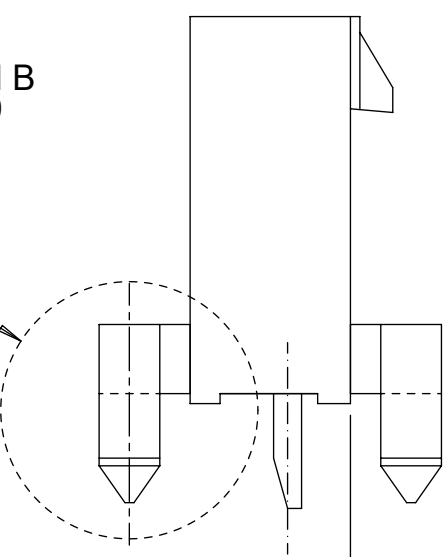
ITEM NO.	CKT SIZE	HOUSING MATERIAL	PLATING	DIM A	DIM B	VOIDED CIRCUITS
46014-5001	5	V-0	GOLD	.874 (22.20)	.661 (16.80)	3
46014-5002	5	V-0	GOLD	.874 (22.20)	.661 (16.80)	2 & 4
46014-5003	5	V-0	TIN	.874 (22.20)	.661 (16.80)	3
46014-5004	5	V-0	TIN	.874 (22.20)	.661 (16.80)	2 & 4

- NOTES:
- MATERIALS:
HOUSING: 1 - NYLON 6/6, UL 94V-2, COLOR: NATURAL
2 - NYLON 6/6, UL 94V-0, COLOR: NATURAL
TERMINALS: COPPER ALLOY
 - TERMINAL PLATING:
1 - .000100/(.00254) MIN. MATTE TIN OVER
.000050/(.00127) MIN. NICKEL OVERALL
2 - .000030/(.00076) MIN. SELECT GOLD AND
.000100/(.00254) MIN. SELECT MATTE TIN OVER
.000050/(.00127) MIN. NICKEL OVERALL
 - PRODUCT SPECIFICATION: PS-45750-001
 - PACKAGING: TRAY PACK PER PK-5566-002
 - PART MATES WITH WITH MINI-FIT JR. RECEPTACLE #5557.
 - PART IS NOT DESIGNED FOR CURRENT SHARING.
 - PARTS TO HAVE "HCS+" MARKING.
 - PART CONFORMS TO CLASS "B" REQUIREMENTS OF COSMETIC SPECIFICATION PS-45499-002.
 - 4 CIRCUIT PARTS WILL HAVE PEG DESIGN A. ALL OTHER CIRCUIT SIZES WILL HAVE PEG DESIGN B.



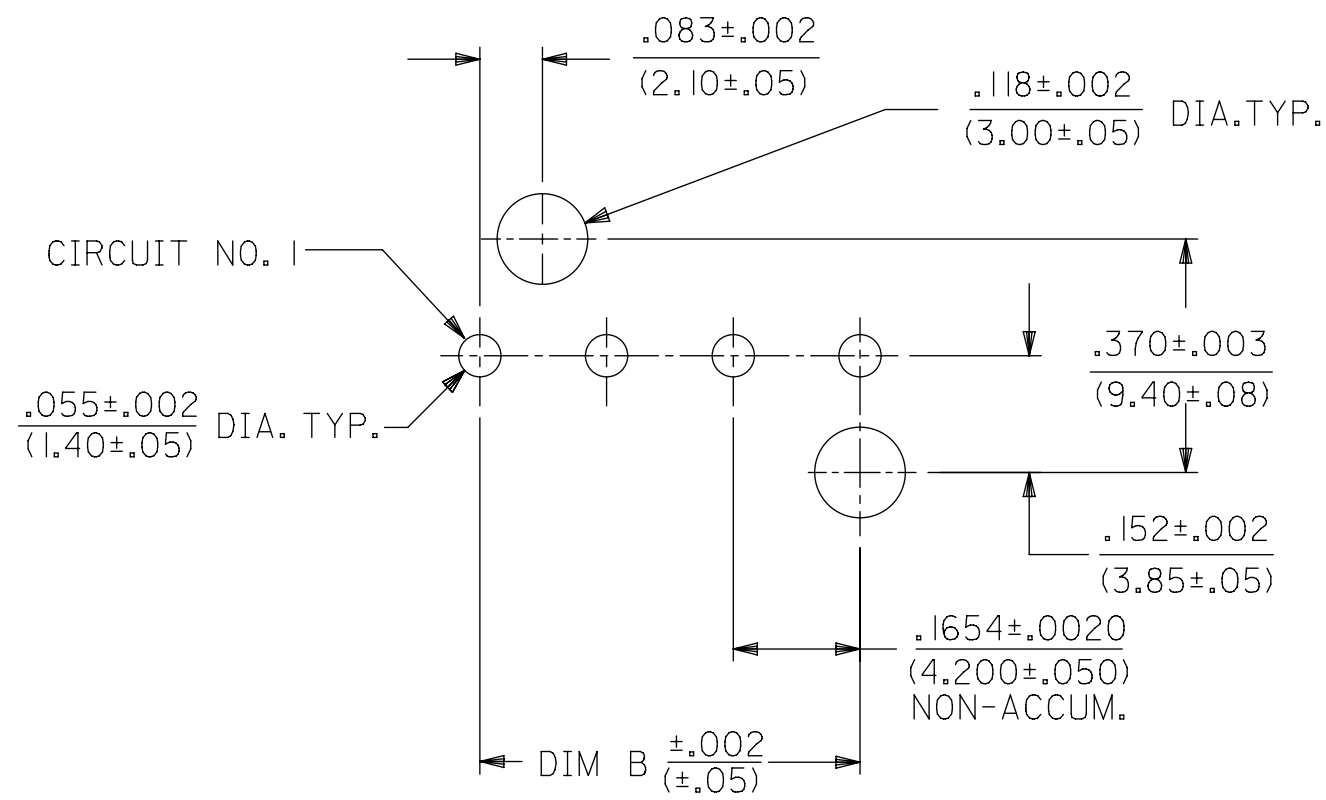
PEG DESIGN B
SEE NOTE 9

PEG DESIGN A
SEE NOTE 9

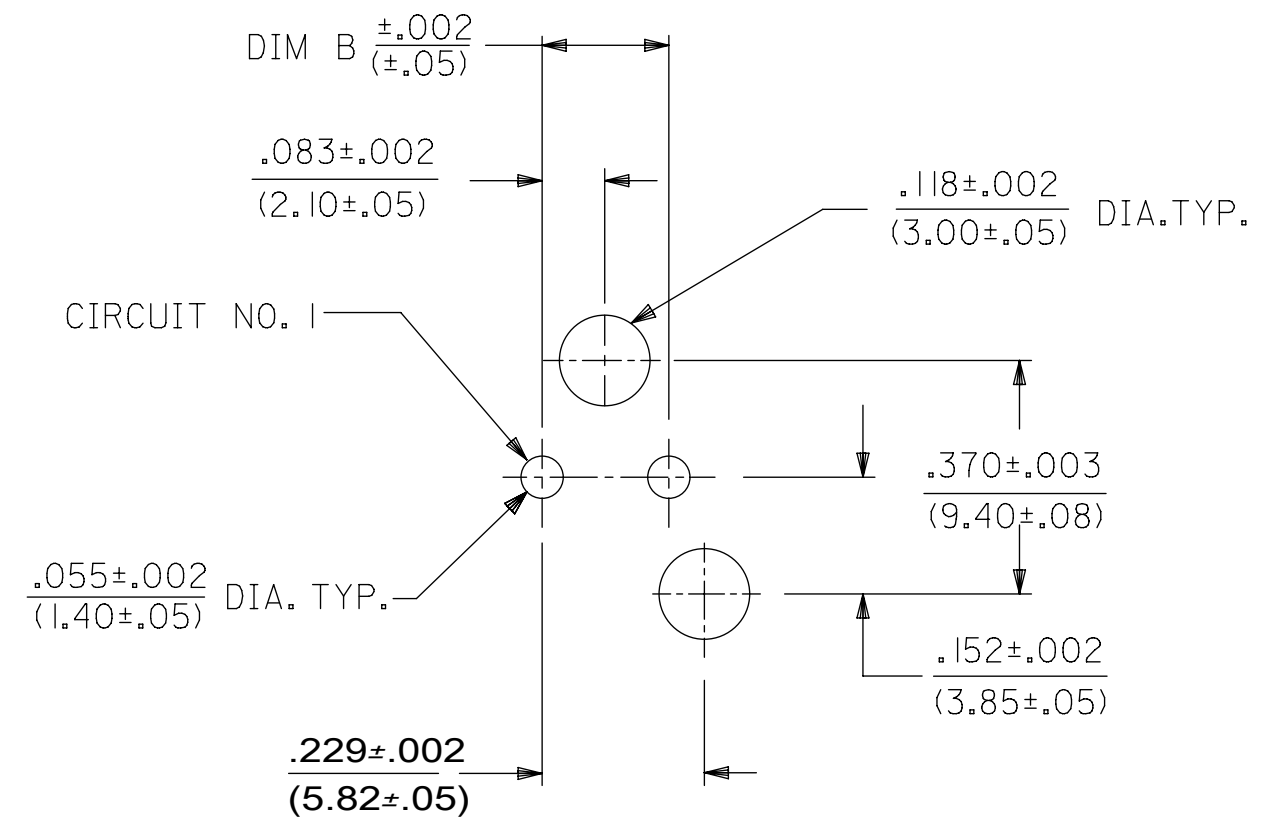


PRE-RELEASE
REFERENCE
USE ONLY

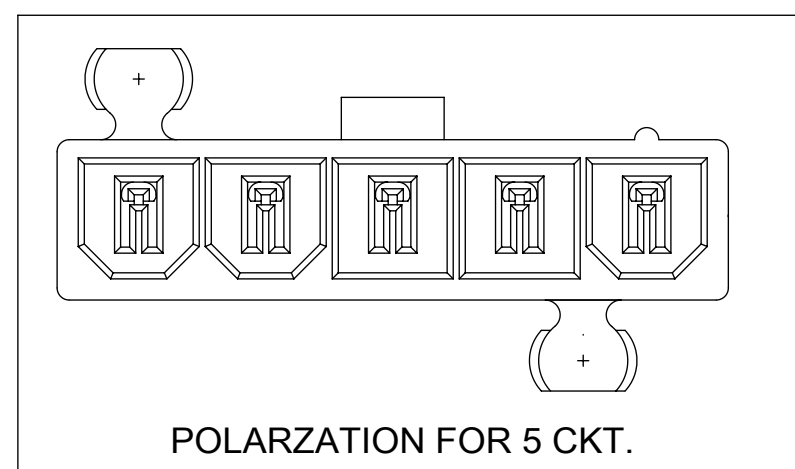
QUALITY SYMBOLS		THIS DRAWING CONTAINS INFORMATION THAT IS PROPRIETARY TO MOLEX ELECTRONIC TECHNOLOGIES, LLC AND SHOULD NOT BE USED WITHOUT WRITTEN PERMISSION		DIMENSION UNITS		SCALE		molex	
▽ = 0	▽ = 0	ADD: 46014-5004	2016/03/07	MM	4:1	DRWN BY			
▽ = 0	▽ = 0	EC NO: 103373	2016/03/10	GENERAL TOLERANCES (UNLESS SPECIFIED)		TGREGORI		2006/04/27	
▽ = 0	▽ = 0	DRWN: BAPPELDORN		ANGULAR TOL ± 0.5 °		CHKD BY		DATE	
▽ = 0	▽ = 0	CHKD: JBELL		4 PLACES ±		JCOMERCI		2006/04/27	
▽ = 0	▽ = 0	REV: APPR:		3 PLACES ±		APPR BY		DATE	
▽ = 0	▽ = 0			2 PLACES ± 0.25		FSMITH		2012/02/02	
▽ = 0	▽ = 0			1 PLACE ± 0.5		DRAWING SIZE		THIRD ANGLE PROJECTION	
▽ = 0	▽ = 0			0 PLACES ±		C			
▽ = 0	▽ = 0			DRAFT WHERE APPLICABLE MUST REMAIN WITHIN DIMENSIONS					
RELEASE STATUS		RELEASE DATE		SERIES		MATERIAL NUMBER		CUSTOMER	
				46014		SEE CHART		GENERAL MARKET	
				DOCUMENT NUMBER		DOC TYPE		DOC PART	
				SD-46014-001		PSD		000	
				SHEET NUMBER		1 OF 2			



RECOMMENDED HOLE LAYOUT FOR
.070/(1.78) MAX. THICK P.C. BOARD
VIEWED FROM COMPONENT SIDE
3-6 CIRCUIT PARTS



RECOMMENDED HOLE LAYOUT FOR
.070/(1.78) MAX. THICK P.C. BOARD
VIEWED FROM COMPONENT SIDE
2 CIRCUIT PARTS



POLARIZATION FOR 5 CKT.

PRE-RELEASE
REFERENCE
USE ONLY

QUALITY SYMBOLS		THIS DRAWING CONTAINS INFORMATION THAT IS PROPRIETARY TO MOLEX ELECTRONIC TECHNOLOGIES, LLC AND SHOULD NOT BE USED WITHOUT WRITTEN PERMISSION				DIMENSION UNITS		SCALE				
▽ = 0	▽ = 0	GENERAL TOLERANCES (UNLESS SPECIFIED)		MM		4:1		VERTICAL HEADER ASSEMBLY SINGLE ROW, MINI-FIT PLUS HCS SERIES				
▽ = 0	▽ = 0	ANGULAR TOL ± 0.5 °		DRWN BY		DATE					PRODUCT CUSTOMER DRAWING	
▽ = 0	▽ = 0	4 PLACES ±		TGREGORI		2006/04/27		SERIES MATERIAL NUMBER CUSTOMER 46014 SEE CHART GENERAL MARKET				
▽ = 0	▽ = 0	3 PLACES ±		CHKD BY		DATE					DOCUMENT NUMBER DOC TYPE DOC PART SHEET NUMBER SD-46014-001 PSD 000 2 OF 2	
▽ = 0	▽ = 0	2 PLACES ± 0.25		JCOMERCI		2006/04/27		DRAWING SIZE THIRD ANGLE PROJECTION C				
▽ = 0	▽ = 0	1 PLACE ± 0.5		APPR BY		DATE					EC NO: 103373 DRWN: BAPPELDORN CHKD: JBELL REV: APPR:	
▽ = 0	▽ = 0	0 PLACES ±		FSMITH		2012/02/02		ADD: 46014-5004 2016/03/07 2016/03/10				
▽ = 0	▽ = 0	DRAFT WHERE APPLICABLE MUST REMAIN WITHIN DIMENSIONS		B6		C					RELEASE STATUS RQ RELEASE DATE 10.03.2016 21:10:59	
▽ = 0	▽ = 0											