

## Excellent Integrated System Limited

Stocking Distributor

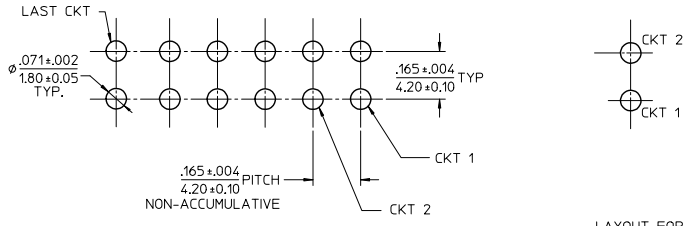
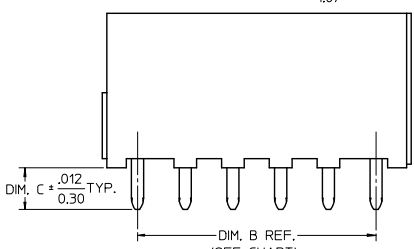
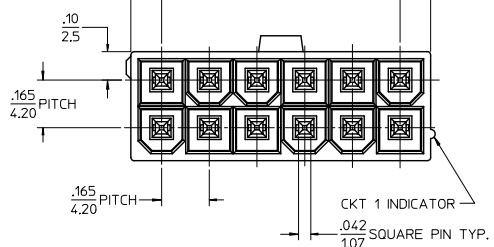
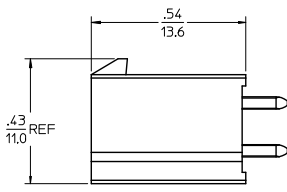
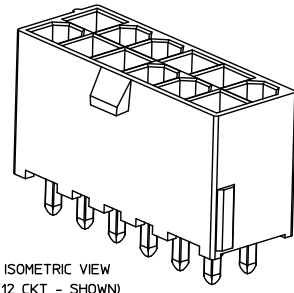
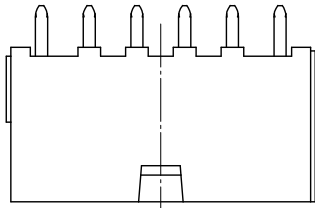
Click to view price, real time Inventory, Delivery & Lifecycle Information:

[Molex Connector Corporation](#)  
[0462071208](#)

For any questions, you can email us directly:

[sales@integrated-circuit.com](mailto:sales@integrated-circuit.com)

CKT SIZE	DIM. A	DIM. B
02	0.21/5.4	NA
04	0.38/9.6	0.165/4.20
06	0.54/13.8	0.331/8.40
08	0.71/18.0	0.496/12.60
10	0.87/22.2	0.661/16.80
12	1.04/26.4	0.827/21.00
14	1.21/30.6	0.992/25.20
16	1.37/34.8	1.160/29.40
18	1.54/39.0	1.323/33.60
20	1.70/43.2	1.488/37.80
22	1.87/47.4	1.654/42.00
24	2.03/51.6	1.819/46.20



- NOTES:
- MATERIALS:  
HOUSING - GLASS FILLED LCP UL94V-0. COLOR: SEE CHART  
TERMINAL - BRASS
  - TERMINAL PLATING:  
TIN= .000100/0.00254 MIN. MATTE TIN OVER  
.000050/0.00127 MIN. NICKEL  
GOLD=.000030/0.00076 MIN. SELECT GOLD OVER  
.000100/0.00254 MIN. SELECT MATTE TIN  
OVER .000050/0.00127 MIN. NICKEL OVERALL.
  - PRODUCT SPECIFICATION: PS-46207-001  
⚠️ PACKAGING SPECIFICATION: TRAY PACK PER: PK-46207-001 UNLESS NOTED.  
TAPE AND REEL PACK PER: PK-46207-002
  - PART CONFORMS TO CLASS "B" REQUIREMENTS OF COSMETIC SPECIFICATION PS-45499-002.
  - PARTS ARE NOT DESIGNED FOR CURRENT SHARING.
  - CONNECTORS ARE NOT TO BE MATED AND UNMATED WHILE CIRCUITS ARE LIVE.

RELEASE 46207-4006 EC NO: UCP2015-2143 DRWN: JFOX 2014/11/20 CHKD: JELL 2014/11/20 APPR: SMITH 2015/03/26	QUALITY SYMBOLS ∇=0 ∇=0 ∇=0	GENERAL TOLERANCES (UNLESS SPECIFIED)	DIMENSION STYLE IN/MM	SCALE 4:1	DESIGN UNITS METRIC	THIRD ANGLE PROJECTION	
		4 PLACES ± --- ± --- 3 PLACES ± --- ± .005 2 PLACES ± 0.13 ± .010 1 PLACE ± 0.25 ± --- 0 PLACE ± --- ± ---	DRAWN BY LSCHMIDT	DATE 2007/12/14	TITLE MINI-FIT RTC HI-TEMP VERTICAL HEADER IN LCP, W/O PCB PEGS		
		ANGULAR ± 1/2° DRAFT WHERE APPLICABLE MUST REMAIN WITHIN DIMENSIONS	CHECKED BY JBELL	DATE 2007/12/17	molex		
		SEE CHART	APPROVED BY FSM1 THROEMER	DATE 2007/12/18	DOCUMENT NO. SD-46207-002	SHEET NO. 1 OF 3	



Distributor of Molex Connector Corporation: Excellent Integrated System Limited

Datasheet of 0462071208 - MINI-FIT JR LCP VERT. HDR NOPEG

Contact us: sales@integrated-circuit.com Website: www.integrated-circuit.com

GOLD PLATING						COLOR-BLACK						TIN PLATING						COLOR-BLACK											
CKT SIZE	TAPE & REEL MATERIAL NUMBER	TRAY PACK MATERIAL NUMBER	DIM. C	PCB THK.		CKT SIZE	TAPE & REEL MATERIAL NUMBER	TRAY PACK MATERIAL NUMBER	DIM. C	PCB THK.		CKT SIZE	TAPE & REEL MATERIAL NUMBER	TRAY PACK MATERIAL NUMBER	DIM. C	PCB THK.		CKT SIZE	TAPE & REEL MATERIAL NUMBER	TRAY PACK MATERIAL NUMBER	DIM. C	PCB THK.							
02	462078002	*	462076002	*	0.144/3.66	0.062	02	462074002	*	462071002	*	0.144/3.66	0.062	02	462074002	*	462071002	*	0.144/3.66	0.062	02	462071002	*	0.176/4.46	0.093				
04	462078004	*	462076004	*	0.144/3.66	0.062	04	462074004	*	462071004	*	0.144/3.66	0.062	04	462074004	*	462071004	*	0.176/4.46	0.093	04	462071004	*	0.176/4.46	0.093				
06	462078006	*	462076006	*	0.144/3.66	0.062	06	462074006	*	462071006	*	0.144/3.66	0.062	06	462074006	*	462071006	*	0.176/4.46	0.093	06	462071006	*	0.176/4.46	0.093				
08	462078008	*	462076008	*	0.144/3.66	0.062	08	462074008	*	462071008	*	0.144/3.66	0.062	08	462074008	*	462071008	*	0.176/4.46	0.093	08	462071008	*	0.176/4.46	0.093				
10	462078010	*	462076010	*	0.144/3.66	0.062	10	462074010	*	462071010	*	0.144/3.66	0.062	10	462074010	*	462071010	*	0.176/4.46	0.093	10	462071010	*	0.176/4.46	0.093				
12	462078012	*	462076012	*	0.144/3.66	0.062	12	462074012	*	462071012	*	0.144/3.66	0.062	12	462074012	*	462071012	*	0.176/4.46	0.093	12	462071012	*	0.176/4.46	0.093				
14	462078014	*	462076014	*	0.144/3.66	0.062	14	462074014	*	462071014	*	0.144/3.66	0.062	14	462074014	*	462071014	*	0.176/4.46	0.093	14	462071014	*	0.176/4.46	0.093				
16	462078016	*	462076016	*	0.144/3.66	0.062	16	462074016	*	462071016	*	0.144/3.66	0.062	16	462074016	*	462071016	*	0.176/4.46	0.093	16	462071016	*	0.176/4.46	0.093				
18	462078018	*	462076018	*	0.144/3.66	0.062	18	462074018	*	462071018	*	0.144/3.66	0.062	18	462074018	*	462071018	*	0.176/4.46	0.093	18	462071018	*	0.176/4.46	0.093				
20	462078020	*	462076020	*	0.144/3.66	0.062	20	462074020	*	462071020	*	0.144/3.66	0.062	20	462074020	*	462071020	*	0.176/4.46	0.093	20	462071020	*	0.176/4.46	0.093				
22	462078022	*	462076022	*	0.144/3.66	0.062	22	462074022	*	462071022	*	0.144/3.66	0.062	22	462074022	*	462071022	*	0.176/4.46	0.093	22	462071022	*	0.176/4.46	0.093				
24	462078024	*	462076024	*	0.144/3.66	0.062	24	462074024	*	462071024	*	0.144/3.66	0.062	24	462074024	*	462071024	*	0.176/4.46	0.093	24	462071024	*	0.176/4.46	0.093				
02							02					02		462071102	*	0.176/4.46	0.093	02					02		462071202	*	0.207/5.26	0.125	
04							04					04		462071104	*	0.176/4.46	0.093	04					04		462071204	*	0.207/5.26	0.125	
06							06					06		462071106	*	0.176/4.46	0.093	06					06		462071206	*	0.207/5.26	0.125	
08							08					08		462071108	*	0.176/4.46	0.093	08					08		462071208	*	0.207/5.26	0.125	
10							10					10		462071110	*	0.176/4.46	0.093	10					10		462071210	*	0.207/5.26	0.125	
12							12					12		462071112	*	0.176/4.46	0.093	12					12		462071212	*	0.207/5.26	0.125	
14							14					14		462071114	*	0.176/4.46	0.093	14					14		462071214	*	0.207/5.26	0.125	
16							16					16		462071116	*	0.176/4.46	0.093	16					16		462071216	*	0.207/5.26	0.125	
18							18					18		462071118	*	0.176/4.46	0.093	18					18		462071218	*	0.207/5.26	0.125	
20							20					20		462071120	*	0.176/4.46	0.093	20					20		462071220	*	0.207/5.26	0.125	
22							22					22		462071122	*	0.176/4.46	0.093	22					22		462071222	*	0.207/5.26	0.125	
24							24					24		462071124	*	0.176/4.46	0.093	24					24		462071224	*	0.207/5.26	0.125	
02			462076602	*	.278/7.06	0.250	02					02						02					02						
04			462076604	*	.278/7.06	0.250	04					04						04					04						
06			462076606	*	.278/7.06	0.250	06					06						06					06						
08			462076608	*	.278/7.06	0.250	08					08						08					08						
10			462076610	*	.278/7.06	0.250	10					10						10					10						
12			462076612	*	.278/7.06	0.250	12					12						12					12						
14			462076614	*	.278/7.06	0.250	14					14						14					14						
16			462076616	*	.278/7.06	0.250	16					16						16					16						
18			462076618	*	.278/7.06	0.250	18					18						18					18						
20			462076620	*	.278/7.06	0.250	20					20						20					20						
22			462076622	*	.278/7.06	0.250	22					22						22					22						
24			462076624	*	.278/7.06	0.250	24					24						24					24						

TRAY PACKAGED PER PK-5569-003

\* DESIGNATES PART NOT RELEASED. CONTACT FACTORY FOR AVAILABILITY.

\* DESIGNATES PART NOT RELEASED. CONTACT FACTORY FOR AVAILABILITY.

SEE SHEET 1 EC NO: UCP2015-2143 DRAWN: JPOX 2014/11/20 CHECKED: BELL 2014/11/20 APPROVED: SMITH 2015/03/26	QUALITY SYMBOLS ∇=0 ∇=0 ∇=0	GENERAL TOLERANCES (UNLESS SPECIFIED)		DIMENSION STYLE IN/MM		SCALE 1:1	DESIGN UNITS METRIC	THIRD ANGLE PROJECTION	
		4 PLACES ± --- ± ---	3 PLACES ± --- ± .005	DRAWN BY LSCHMIDT	DATE 2007/12/14	TITLE MINI-FIT RTC HI-TEMP VERTICAL HEADER IN LCP, W/O PCB PEGS			
		2 PLACES ± 0.13 ± .010	1 PLACE ± 0.25 ± ---	CHECKED BY JBELL	DATE 2007/12/17	MATERIAL NO. SEE CHART			
		0 PLACE ± --- ± ---	ANGULAR ± 1/2°	APPROVED BY FSMITHROEMER	DATE 2007/12/18	DOCUMENT NO. SD-46207-002	SHEET NO. 2 OF 3		
DRAFT WHERE APPLICABLE MUST REMAIN WITHIN DIMENSIONS		THIS DRAWING CONTAINS INFORMATION THAT IS PROPRIETARY TO MOLEX INCORPORATED AND SHOULD NOT BE USED WITHOUT WRITTEN PERMISSION							

13 12 11 10 9 8 7 6 5 4 3 2 1

CKT SIZE	TAPE & REEL MATERIAL NUMBER	TRAY PACK MATERIAL NUMBER	TIN PLATING		COLOR=NATURAL	
			DIM. C	PCB THK.		
02	462074302	* 462071302	* 0.144/3.66	0.062		
04	462074304	* 462071304	* 0.144/3.66	0.062		
06	462074306	* 462071306	* 0.144/3.66	0.062		
08	462074308	* 462071308	* 0.144/3.66	0.062		
10	462074310	* 462071310	* 0.144/3.66	0.062		
12	462074312	* 462071312	* 0.144/3.66	0.062		
14	462074314	* 462071314	* 0.144/3.66	0.062		
16	462074316	* 462071316	* 0.144/3.66	0.062		
18	462074318	* 462071318	* 0.144/3.66	0.062		
20	462074320	* 462071320	* 0.144/3.66	0.062		
22	462074322	* 462071322	* 0.144/3.66	0.062		
24	462074324	* 462071324	* 0.144/3.66	0.062		
02			* 0.176/4.46	0.093		
04			* 0.176/4.46	0.093		
06			* 0.176/4.46	0.093		
08			* 0.176/4.46	0.093		
10			* 0.176/4.46	0.093		
12			* 0.176/4.46	0.093		
14			* 0.176/4.46	0.093		
16			* 0.176/4.46	0.093		
18			* 0.176/4.46	0.093		
20			* 0.176/4.46	0.093		
22			* 0.176/4.46	0.093		
24			* 0.176/4.46	0.093		
02			* 0.207/5.26	0.125		
04			* 0.207/5.26	0.125		
06			* 0.207/5.26	0.125		
08			* 0.207/5.26	0.125		
10			* 0.207/5.26	0.125		
12			* 0.207/5.26	0.125		
14			* 0.207/5.26	0.125		
16			* 0.207/5.26	0.125		
18			* 0.207/5.26	0.125		
20			* 0.207/5.26	0.125		
22			* 0.207/5.26	0.125		
24			* 0.207/5.26	0.125		

\* DESIGNATES PART NOT RELEASED. CONTACT FACTORY FOR AVAILABILITY.

SEE SHEET 1 EEC NO: UCP2015-2143 DRAWN BY: JBOY 2014/11/20 CHKD: JELL 2014/11/20 APPR: SMITH 2015/03/26 C3	QUALITY SYMBOLS 	GENERAL TOLERANCES (UNLESS SPECIFIED)		DIMENSION STYLE IN/MM		SCALE 1:1	DESIGN UNITS METRIC	THIRD ANGLE PROJECTION	
		4 PLACES ± --- ± ---	3 PLACES ± --- ± .005	DRAWN BY LSCHMIDT	DATE 2007/12/14	MINI-FIT RTC HI-TEMP VERTICAL HEADER IN LCP, W/O PCB PEGS  <b>molex</b> SD-46207-002 SHEET NO. 3 OF 3			
		2 PLACES ± 0.13 ± .010	1 PLACE ± 0.25 ± ---	CHECKED BY JBELL	DATE 2007/12/17				
		0 PLACE ± --- ± ---	APPROVED BY FSMITHROEMER	DATE 2007/12/18	MATERIAL NO. SEE CHART				
ANGULAR ± 1/2°	DRAFT WHERE APPLICABLE MUST REMAIN WITHIN DIMENSIONS	DOCUMENT NO. SD-46207-002	SIZE C						

12 11 10 9 8 7 6 5 4 3 2 1