



Distributor of Molex Connector Corporation: Excellent Integrated System Limited
Datasheet of 0497499001 - Connector Quick Connect Receptacle 19-25.5 AWG 0.187"
(4.75mm) Crimp

Contact us: sales@integrated-circuit.com Website: www.integrated-circuit.com

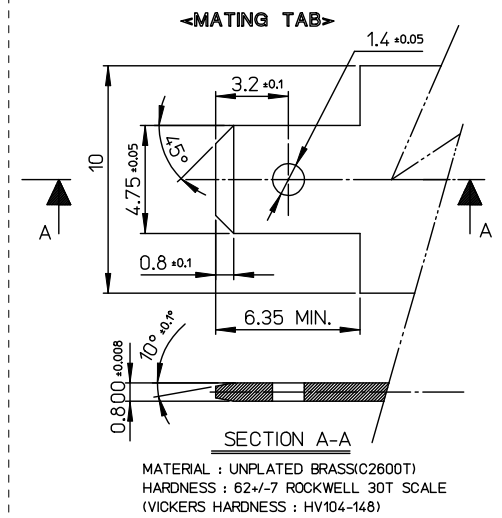
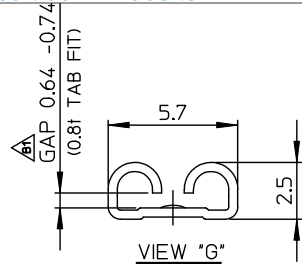
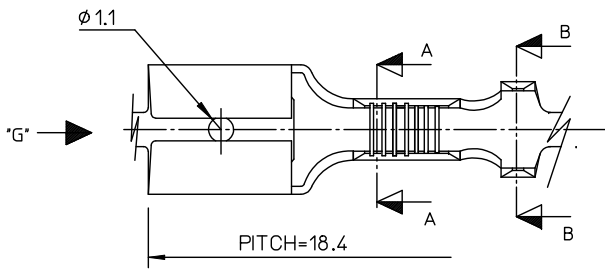
Excellent Integrated System Limited

Stocking Distributor

Click to view price, real time Inventory, Delivery & Lifecycle Information:

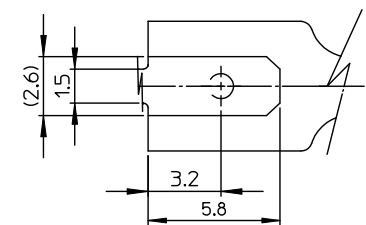
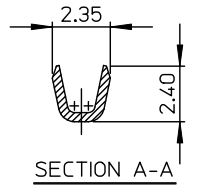
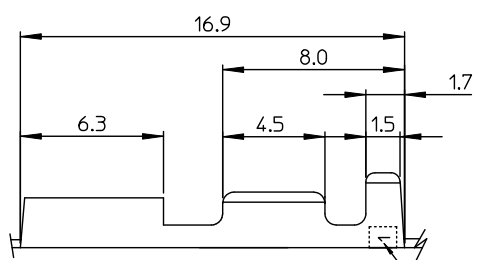
[Molex Connector Corporation](#)
[0497499001](#)

For any questions, you can email us directly:
sales@integrated-circuit.com

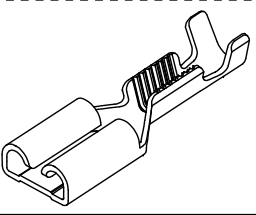


MATERIAL : UNPLATED BRASS(C2600T)
HARDNESS : 62+/-7 ROCKWELL 30T SCALE
(VICKERS HARDNESS : HV104-148)

- NOTES:
1. MATERIALS: PHOSPHOR BRONZE, 1/2 HARD, 0.4mm THICKNESS
 2. FINISHES: POST TIN PLATED
(1.0 μm MIN. TIN OVER 0.3 μm MIN. COPPER)
 3. PRODUCT SPECIFICATION: PS-49749-001
 4. PACKAGING SPECIFICATION: PK-49749-001
 5. APPLICABLE MAGNET WIRE RANGE : AWG #25.5 - #19(280 - 1300 CMA)
 6. INSULATION WIRE RANGE : TFS-19 ~ 21 TEFLON TUBING
PER THE FOLLING CS-49749-001
 7. TEST TAB INSERTION & WITHDRAWAL FORCE
(MEASURED BY PUSH-PULL GAUGE : USED 0.81 UNPLATED TAB)



INSERTION FORCE	WITHDRAWAL FORCE	FINISH
INITIAL	INITIAL	
7.0 kgf MAX.	2.7kgf MIN.	TIN PLATED



REVISED EC NO: KOR2014-0002 DRAWN:SKCHO 2013/07/09 CHKD:SKCHO 2013/07/09 APPR:YSKIM02 2013/07/17 REV DESCRIPTION	QUALITY SYMBOLS	GENERAL TOLERANCES (UNLESS SPECIFIED) <table border="1"> <tr> <td></td> <td>mm</td> <td>INCH</td> </tr> <tr> <td>4 PLACES</td> <td>± ---</td> <td>± ---</td> </tr> <tr> <td>3 PLACES</td> <td>± ---</td> <td>± ---</td> </tr> <tr> <td>2 PLACES</td> <td>± 0.30</td> <td>± ---</td> </tr> <tr> <td>1 PLACE</td> <td>± 0.30</td> <td>± ---</td> </tr> <tr> <td>0 PLACE</td> <td>± ---</td> <td>± ---</td> </tr> </table> ANGULAR ± 1° DRAFT WHERE APPLICABLE MUST REMAIN WITHIN DIMENSIONS		mm	INCH	4 PLACES	± ---	± ---	3 PLACES	± ---	± ---	2 PLACES	± 0.30	± ---	1 PLACE	± 0.30	± ---	0 PLACE	± ---	± ---	DIMENSION STYLE MM ONLY DRAWN BY JB. JIN DATE 2004/03/16 CHECKED BY WY. YANG DATE 2004/03/16 APPROVED BY CW. LEE DATE 2004/03/16	SCALE 6/1 DESIGN UNITS METRIC THIRD ANGLE PROJECTION	TITLE .187 REC TERMINAL (MAGNET WIRE)
			mm	INCH																			
	4 PLACES		± ---	± ---																			
	3 PLACES		± ---	± ---																			
2 PLACES	± 0.30	± ---																					
1 PLACE	± 0.30	± ---																					
0 PLACE	± ---	± ---																					
MATERIAL NO. 497499001		DOCUMENT NO. SD-49749-001	SHEET NO. 1 OF 1																				
THIS DRAWING CONTAINS INFORMATION THAT IS PROPRIETARY TO MOLEX INCORPORATED AND SHOULD NOT BE USED WITHOUT WRITTEN PERMISSION																							
SIZE A3																							