

## **Excellent Integrated System Limited**

Stocking Distributor

Click to view price, real time Inventory, Delivery & Lifecycle Information:

[Molex Connector Corporation](#)  
[0634560041](#)

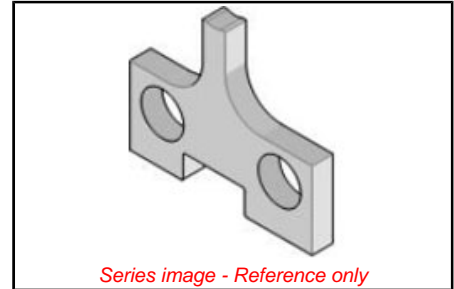
For any questions, you can email us directly:

[sales@integrated-circuit.com](mailto:sales@integrated-circuit.com)

This document was generated on 04/06/2016

**PLEASE CHECK WWW.MOLEX.COM FOR LATEST PART INFORMATION**

**Part Number:** [0634560041](#)  
**Status:** **Active**  
**Description:** Insulation Anvil



**Documents:**  
[RoHS Certificate of Compliance \(PDF\)](#)

**General**

|                                |   |
|--------------------------------|---|
| Product Family                 | Application Tooling   |
| Series                         | T9999   |
| Comments                       | See Tooling Specification (PDF) Above   |
| Function                       | Cutter  |
| Geographic Area                | Global  |
| Level of Automation            | Semi-Automatic  |
| More Detailed Tech Information | <a href="mailto:applicationtooling@molex.com">applicationtooling@molex.com</a>  |
| Product Name                   | N/A   |
| Survey                         | <a href="http://www.molex.com/review/apptool_survey.html">www.molex.com/review/apptool_survey.html</a>  |
| Tool Type                      | Anvil   |
| UPC                            | 800756666815  |
| Warranty Disclaimer            | CAUTION: Molex tooling crimp specifications are valid only when used with Molex terminals and tooling manufactured by Molex and sold by Molex or authorized distributors ("Molex Tooling"). When using tooling other than Molex Tooling with Molex specific connector systems listed in our ATS documents, the Molex tooling qualification does not apply and the responsibility for full qualification of the connector system is that of the customer. Molex accepts no liability for connector performance or tooling support where tooling other than Molex Tooling is used or where Molex Tooling is modified. |

**Material Info**

**Reference - Drawing Numbers**  
 Application Tooling Documents

ATS-STANDARD-PARTS

**EU ELV**  
**Not Relevant**

**EU RoHS** **China RoHS**

**Not Relevant**

**REACH SVHC**

Not Relevant

**Halogen-Free**

**Status**

**Not Relevant**

**Need more information on product environmental compliance?**

Email [productcompliance@molex.com](mailto:productcompliance@molex.com)  
 Please visit the [Contact Us](#) section for any non-product compliance questions.

|            |              |
|------------|--------------|
| China ROHS | Not Relevant |
| ELV        | Not Relevant |

**Search Parts in this Series**

[T9999](#) Series

**Use With**

[63900-0400](#) , [63900-0470](#) , [63900-0800](#) , [63900-0870](#)

This document was generated on 04/06/2016

**PLEASE CHECK WWW.MOLEX.COM FOR LATEST PART INFORMATION**