

Excellent Integrated System Limited

Stocking Distributor

Click to view price, real time Inventory, Delivery & Lifecycle Information:

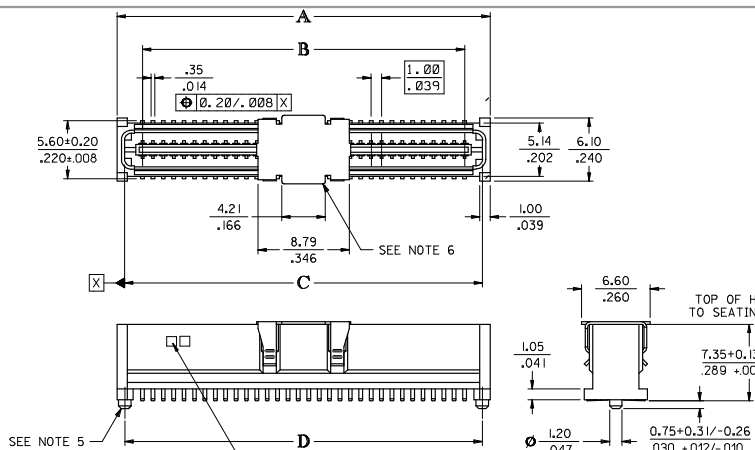
[Molex Connector Corporation](#)

[0714361564](#)

For any questions, you can email us directly:

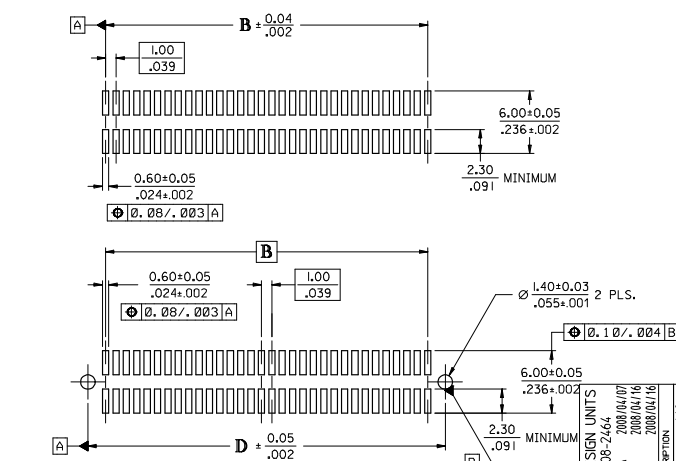
sales@integrated-circuit.com

| CIRCUIT SIZE | DIM. A | DIM. B | DIM. C | DIM. D |
|--------------|--------|--------|--------|--------|
| 20 | 13.90 | 9.00 | 12.58 | 12.40 |
| | .547 | .354 | .495 | .488 |
| 30 | 18.90 | 14.00 | 17.58 | 17.40 |
| | .744 | .551 | .692 | .685 |
| 40 | 23.90 | 19.00 | 22.58 | 22.40 |
| | .941 | .748 | .889 | .882 |
| 50 | 28.90 | 24.00 | 27.58 | 27.40 |
| | 1.138 | .945 | 1.086 | 1.079 |
| 60 | 33.90 | 29.00 | 32.58 | 32.40 |
| | 1.335 | 1.142 | 1.283 | 1.276 |
| 64 | 35.90 | 31.00 | 34.58 | 34.40 |
| | 1.413 | 1.220 | 1.361 | 1.354 |
| 70 | 38.90 | 34.00 | 37.58 | 37.40 |
| | 1.531 | 1.339 | 1.480 | 1.472 |
| 80 | 43.90 | 39.00 | 42.58 | 42.40 |
| | 1.728 | 1.535 | 1.676 | 1.669 |
| 84 | 45.90 | 41.00 | 44.58 | 44.40 |
| | 1.807 | 1.614 | 1.755 | 1.748 |
| 90 | 48.90 | 44.00 | 47.58 | 47.40 |
| | 1.925 | 1.732 | 1.873 | 1.866 |
| 100 | 53.90 | 49.00 | 52.58 | 52.40 |
| | 2.122 | 1.929 | 2.070 | 2.063 |
| 110 | 58.90 | 54.00 | 57.58 | 57.40 |
| | 2.319 | 2.126 | 2.267 | 2.260 |
| 120 | 63.90 | 59.00 | 62.58 | 62.40 |
| | 2.516 | 2.323 | 2.464 | 2.457 |



NOTES:

- HOUSING MATERIAL: G.F. THERMOPLASTIC; UL RATING: 94V-0; COLOR: WHITE
NOTE: HOUSING COLOR FOR -1664 (ONLY) IS BLACK.
TERMINAL MATERIAL: PHOSPHOR BRONZE; 0.205/.0080 THICK
VACUUM CAP MATERIAL: STAINLESS STEEL; 0.255/.0100 THICK
- PLATING FINISHES SEE SHEET 2.
- THIS PART, WHEN MATED WITH MOLEX 1.0mm RECEPTACLE CONNECTOR SERIES 71439, CONFORMS TO MOLEX PRODUCT SPECIFICATION PS-71436-9999.
REFER TO CHART ON SHEET 2 FOR MATED STACK HEIGHTS FOR THIS PLUG.
- PACKAGING SPECIFICATIONS: REFER TO CHART ON SHEET 2.
- PEGS ARE OPTIONAL. REFER TO CHART ON SHEET 2.
- VACUUM PICK & PLACE CAP IS OPTIONAL. REFER TO CHART ON SHEET 2.
- THIS PART CONFORMS TO EIA STANDARD 700 AAAB FOR 1.0mm TWO-PART CONNECTORS FOR USE WITH PARALLEL PRINTED BOARDS.
- COPLANARITY OF SMT TAILS: 0.10/.004 MAX.
- 64-CIRCUIT PLUG ASSEMBLY WITH PEGS AND VACUUM CAP SHOWN FOR ILLUSTRATION PURPOSES ONLY.
- DIMENSIONS ARE IN mm/IN. INCH DIMENSIONS SHOWN FOR REFERENCE ONLY.
- DATE CODE STAMP IS WEEK, YEAR LOCATED APPROXIMATELY WHERE SHOWN.



RECOMMENDED PCB LAYOUT (WITH AND WITHOUT PEGS)

RECOMMENDED PCB THICKNESS: 1.00±0.10/.039±.004 MINIMUM

| REV | DESCRIPTION |
|-----|----------------------|
| 1 | CORRECT DESIGN UNITS |
| 2 | EC NO: UCP2006-2464 |
| 3 | DRWNS: IBARRA |
| 4 | CHK: ORBARKER |
| 5 | APPR: SKILLER |
| 6 | 2008/04/16 |
| 7 | 2008/04/16 |

| GENERAL TOLERANCES (UNLESS SPECIFIED) | | DIMENSION STYLE | | SCALE | DESIGN UNITS | THIRD ANGLE PROJECTION |
|--|--------|---|------------|---|----------------|------------------------|
| mm | INCH | MM/IN | | 4:1 | METRIC | |
| 4 PLACES ± .005 | ± .005 | DRAWN BY | DATE | TITLE | | |
| 3 PLACES ± .005 | ± .005 | REED | 1995/03/23 | SALES ASSY, 1.0MM BOARD TO BOARD PLUG CONNECTOR | | |
| 2 PLACES ± .013 | ± .01 | CHECKED BY | DATE | 3.30/130 STACK HEIGHT | | |
| 1 PLACE ± 0.25 | ± .01 | REED | 1995/03/23 | MOLEX INCORPORATED | | |
| ANGULAR ± 1/2° | | APPROVED BY | DATE | MATERIAL NO. | DOCUMENT NO. | SHEET NO. |
| | | BIXLER | 1995/03/23 | SEE TABLE | SDA-71436-1*** | 1 OF 2 |
| DRAFT WHERE APPLICABLE MUST REMAIN WITHIN DIMENSIONS | | THIS DRAWING CONTAINS INFORMATION THAT IS PROPRIETARY TO MOLEX INCORPORATED AND SHOULD NOT BE USED WITHOUT WRITTEN PERMISSION | | | | |

STANDARD

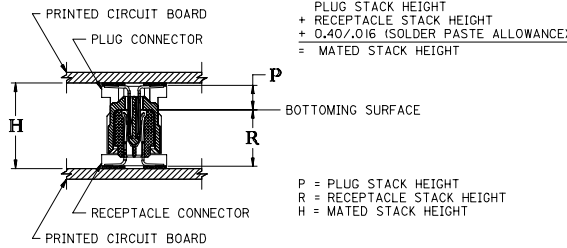
| CIRCUIT SIZE | PLUG ASSEMBLY ITEM NUMBER | PEGS | CONTACT PLATING SEE PLATING NOTES | PICK & PLACE CAP | PACKAGING SPEC. NUMBER | PACKAGING TYPE |
|--------------|---------------------------|------|-----------------------------------|---------------------|------------------------|----------------|
| 64 | 71436-1164 | YES | 30 GOLD | NO | PK-70873-0607 | TUBE |
| 64 | 71436-1364 | YES | 30 GOLD | YES | PK-70873-0607 | TUBE |
| 64 | 71436-1464 | YES | 30 GOLD | YES | PK-70873-063 | TAPE & REEL |
| 64 | 71436-1564 | NO | 30 GOLD | NO | PK-70873-0606 | TUBE |
| 64 | 71436-1664 | NO | 30 GOLD | YES MATTE FINISH | PK-70873-063 | TAPE & REEL |
| 64 | 71436-1764 | NO | 30 GOLD | YES | PK-70873-0606 | TUBE |
| 64 | 71436-1864 | NO | 30 GOLD | YES | PK-70873-063 | TAPE & REEL |
| 64 | 71436-1264 | YES | 50 GOLD | NO | PK-70873-0607 | TUBE |
| 64 | 71436-1064 | NO | 50 GOLD | NO | PK-70873-0607 | TUBE |

RECOMMENDED PLUG/RECEPTACLE COMBINATION FOR MATED STACK HEIGHT PER EIA STANDARD 700 AAAB

| MATED STACK HEIGHT | RECEPTACLE HEIGHT | RECEPTACLE SERIES NO. | PLUG HEIGHT | PLUG SERIES NO. |
|--------------------|-------------------|-----------------------|-------------|-----------------|
| 9.00/.354 | 5.30/.209 | 71439-0*** | 3.30/.130 | 71436-1*** |
| 11.00/.433 | 7.30/.287 | 71439-1*** | 3.30/.130 | 71436-1*** |
| 14.00/.551 | 10.30/.406 | 71439-3*** | 3.30/.130 | 71436-1*** |

PLATING NOTES:

- 30 GOLD: 0.76 MICROMETERS/(30 MICROINCHES) MINIMUM SELECTIVE GOLD (Au) IN THE CONTACT AREA
1.88 MICROMETERS/(75 MICROINCHES) MINIMUM SELECTIVE TIN (Sn) IN THE PC TAIL AREA
NICKEL UNDERPLATE OVERALL
- 50 GOLD: 1.27 MICROMETERS/(50 MICROINCHES) MINIMUM SELECTIVE GOLD (Au) IN THE CONTACT AREA
1.88 MICROMETERS/(75 MICROINCHES) MINIMUM SELECTIVE TIN (Sn) IN THE PC TAIL AREA
NICKEL UNDERPLATE OVERALL



| | | | | | | | |
|--|-----------------------------------|---|--|---|-----------------------------|------------------------|--|
| ADD: 71436-1064/-764 EIC NO: UCP2007-2420 DRAWING BARRA 2007/05/108 CHYKIDJONGAN 2007/05/17 APPROX MILLER 2007/05/18 REV. DESCRIPTION | QUALITY SYMBOLS | GENERAL TOLERANCES (UNLESS SPECIFIED) | DIMENSION STYLE MM/IN | SCALE --- | DESIGN UNITS INCH | THIRD ANGLE PROJECTION | |
| | $\nabla=0$ $\sphericalangle=0$ | 4 PLACES ±--- ±--- 3 PLACES ±--- ±--- 2 PLACES ±--- ±--- 1 PLACE ±--- ±--- | DRAWN BY REED DATE 1995/03/23 CHECKED BY REED DATE 1995/03/23 APPROVED BY BIXLER DATE 1995/03/23 | | | | TITLE |
| | | ANGULAR ±1/2° | | | | | SALES ASSY, 1.0MM BOARD TO BOARD PLUG CONNECTOR 3.30/.130 STACK HEIGHT |
| | | DRAFT WHERE APPLICABLE MUST REMAIN WITHIN DIMENSIONS | | MATERIAL NO. SEE TABLE | DOCUMENT NO. SDA-71436-1*** | | MOLEX INCORPORATED |
| | | | SIZE C | THIS DRAWING CONTAINS INFORMATION THAT IS PROPRIETARY TO MOLEX INCORPORATED AND SHOULD NOT BE USED WITHOUT WRITTEN PERMISSION | | | SHEET NO. 2 OF 2 |