

Excellent Integrated System Limited

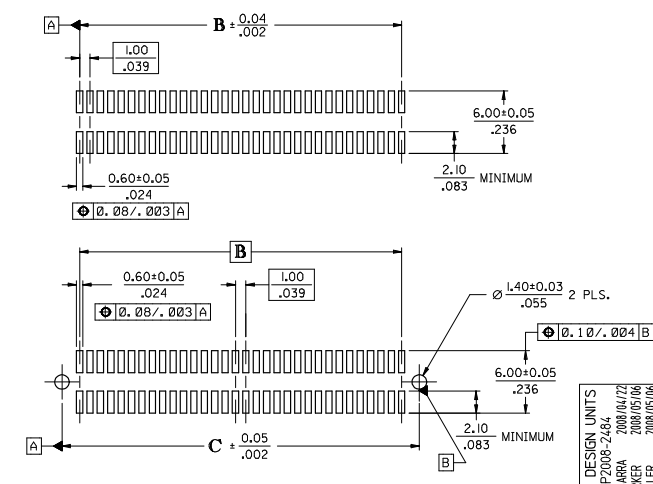
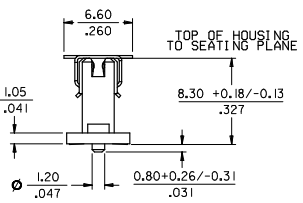
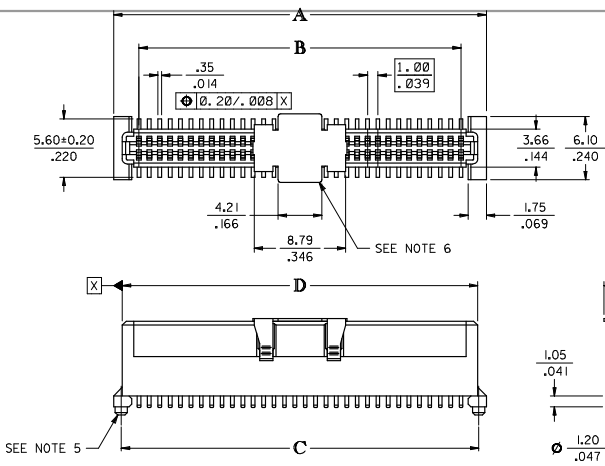
Stocking Distributor

Click to view price, real time Inventory, Delivery & Lifecycle Information:

[Molex Connector Corporation](#)
[0714392664](#)

For any questions, you can email us directly:
sales@integrated-circuit.com

CIRCUIT SIZE	DIM. A	DIM. B	DIM. C	DIM. D
20	13.90	9.00	12.40	12.22
	.547	.354	.488	.481
30	18.90	14.00	17.40	17.22
	.744	.551	.685	.678
40	23.90	19.00	22.40	22.22
	.941	.748	.882	.875
50	28.90	24.00	27.40	27.22
	1.138	.945	1.079	1.072
60	33.90	29.00	32.40	32.22
	1.335	1.142	1.276	1.269
64	35.90	31.00	34.40	34.22
	1.413	1.220	1.354	1.347
70	38.90	34.00	37.40	37.22
	1.531	1.339	1.472	1.465
80	43.90	39.00	42.40	42.22
	1.728	1.535	1.669	1.662
84	45.90	41.00	44.40	44.22
	1.807	1.614	1.748	1.741
90	48.90	44.00	47.40	47.22
	1.925	1.732	1.866	1.859
100	53.90	49.00	52.40	52.22
	2.122	1.929	2.063	2.056
110	58.90	54.00	57.40	57.22
	2.319	2.126	2.260	2.253
120	63.90	59.00	62.40	62.22
	2.516	2.323	2.457	2.450



NOTES:

- 64-CIRCUIT RECEPTACLE ASSEMBLY WITH PEGS AND VACUUM CAP SHOWN FOR ILLUSTRATION PURPOSES ONLY.
- HOUSING MATERIAL: G.F. THERMOPLASTIC; UL RATING: 94V-0; COLOR: WHITE
TERMINAL MATERIAL: PHOSPHOR BRONZE; 0.205/.0080 THICK
VACUUM CAP MATERIAL: STAINLESS STEEL; 0.255/.0100 THICK
- COPLANARITY OF SMT TAILS: 0.10/.004 MAX.
- PACKAGING SPECIFICATIONS; REFER TO CHART ON SHEET 2.
- PEGS ARE OPTIONAL. REFER TO CHART ON SHEET 2.
- VACUUM PICK & PLACE CAP IS OPTIONAL. REFER TO CHART ON SHEET 2.
- THIS PART CONFORMS TO EIA STANDARD 700 AAAB FOR 1.0mm TWO-PART CONNECTORS FOR USE WITH PARALLEL PRINTED BOARDS.
- THIS PART, WHEN MATED WITH MOLEX 1.0mm PLUG CONNECTOR SERIES 71436, CONFORMS TO MOLEX PRODUCT SPECIFICATION PS-71436-9999. REFER TO CHART ON SHEET 2 FOR MATED STACK HEIGHTS FOR THIS RECEPTACLE.
- DIMENSIONS ARE IN mm/IN. INCH DIMENSIONS SHOWN FOR REFERENCE ONLY.

PLATING PER ES-88:

30 GOLD - 0.00076/.000030 MINIMUM GOLD PLATING IN CONTACT AREA,
0.0019/.000075 MINIMUM TIN PLATING IN TERMINAL AREA,
OVER 0.00127/.000050 MINIMUM NICKEL PLATING OVERALL

CORRECT DESIGN UNITS	QUALITY SYMBOLS
EC NO: UCP2006-2484	▽=0
DRAWN BY: BARBA	▽=0
CHK BY: BARKER	
APP: SKILLER	
REV: 2008/09/06	

GENERAL TOLERANCES (UNLESS SPECIFIED)	DIMENSION STYLE	SCALE	DESIGN UNITS	THIRD ANGLE PROJECTION
	MM/IN	4:1	METRIC	
4 PLACES ±.005 ±.005	DRAWN BY	DATE	ASSY. 1MM BOARD-TO-BOARD RECEPTACLE CONECTOR 8.30/.327 HIGH	
3 PLACES ±.010 ±.005	REED	1995/03/23	MOLEX INCORPORATED	
2 PLACES ±.013 ±.01	CHECKED BY	DATE		
1 PLACE ±.025 ±.01	REED	1995/03/23	MATERIAL NO.	DOCUMENT NO.
ANGULAR ±1/2°	APPROVED BY	DATE	SEE TABLE	SDA-71439-2***
	BIXLER	1995/03/23		
DRAFT WHERE APPLICABLE MUST REMAIN WITHIN DIMENSIONS	SIZE	THIS DRAWING CONTAINS INFORMATION THAT IS PROPRIETARY TO MOLEX INCORPORATED AND SHOULD NOT BE USED WITHOUT WRITTEN PERMISSION		

RECOMMENDED PCB LAYOUT (WITH AND WITHOUT PEGS)
RECOMMENDED PCB THICKNESS: 1.00±0.10/.039±.004

2	K
1	K
SHT	REV

SHEET NO.	1 OF 2
-----------	--------

STANDARD

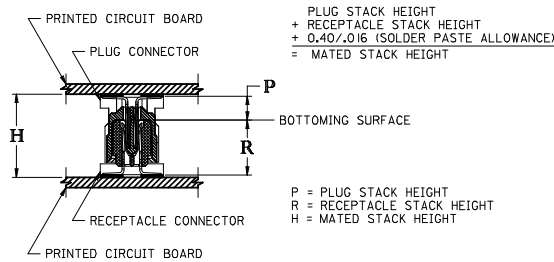
CIRCUIT SIZE	RECEPTACLE ASSY. ITEM NUMBER	PEGS	PICK & PLACE CAP	PACKAGING SPEC. NUMBER	PACKAGING TYPE
64	71439-2164	YES	NO	PK-70873-0601	TUBE
64	71439-2864	NO	YES	PK-70873-063	TAPE & REEL
64	71439-2564	NO	NO	PK-70873-0683	TUBE

SPECIAL

CIRCUIT SIZE	RECEPTACLE ASSY. ITEM NUMBER	PEGS	PICK & PLACE CAP	PACKAGING SPEC. NUMBER	PACKAGING TYPE
64	71439-2464	YES	YES	PK-70873-063	TAPE & REEL

RECOMMENDED PLUG/RECEPTACLE COMBINATION FOR MATED STACK HEIGHT PER EIA STANDARD 700 AAAB

MATED STACK HEIGHT	RECEPTACLE HEIGHT	RECEPTACLE SERIES NO.	PLUG HEIGHT	PLUG SERIES NO.
13.00/.512	8.30/.327	71439-2***	4.30/.169	71436-2***



P = PLUG STACK HEIGHT
R = RECEPTACLE STACK HEIGHT
H = MATED STACK HEIGHT

CORRECT DESIGN UNITS EC NO: UCP2006-2464 DRAWN BY: BARBRA CHK'D BY: BARKER APPR'D BY: SHILLER 2008/04/22 2008/05/06 2008/05/06	QUALITY SYMBOLS	GENERAL TOLERANCES (UNLESS SPECIFIED)	DIMENSION STYLE	SCALE	DESIGN UNITS	THIRD ANGLE PROJECTION	
	$\nabla=0$ $\nabla=0$	mm INCH 4 PLACES ± --- ± --- 3 PLACES ± --- ± --- 2 PLACES ± --- ± --- 1 PLACE ± --- ± --- ANGULAR ±1/2°	MM/IN	---	METRIC		
	DRAWN BY: REED CHECKED BY: REED APPROVED BY: BIXLER DATE: 1995/03/23 DATE: 1995/03/23 DATE: 1995/03/23	MATERIAL NO. SEE TABLE	DOCUMENT NO. SDA-71439-2***	SHEET NO. 2 OF 2	ASSY. 1MM BOARD-TO-BOARD RECEPTACLE CONNECTOR 8.30/.327 HIGH MOLEX INCORPORATED		
	DRAFT WHERE APPLICABLE MUST REMAIN WITHIN DIMENSIONS	SIZE 	THIS DRAWING CONTAINS INFORMATION THAT IS PROPRIETARY TO MOLEX INCORPORATED AND SHOULD NOT BE USED WITHOUT WRITTEN PERMISSION				