

Excellent Integrated System Limited

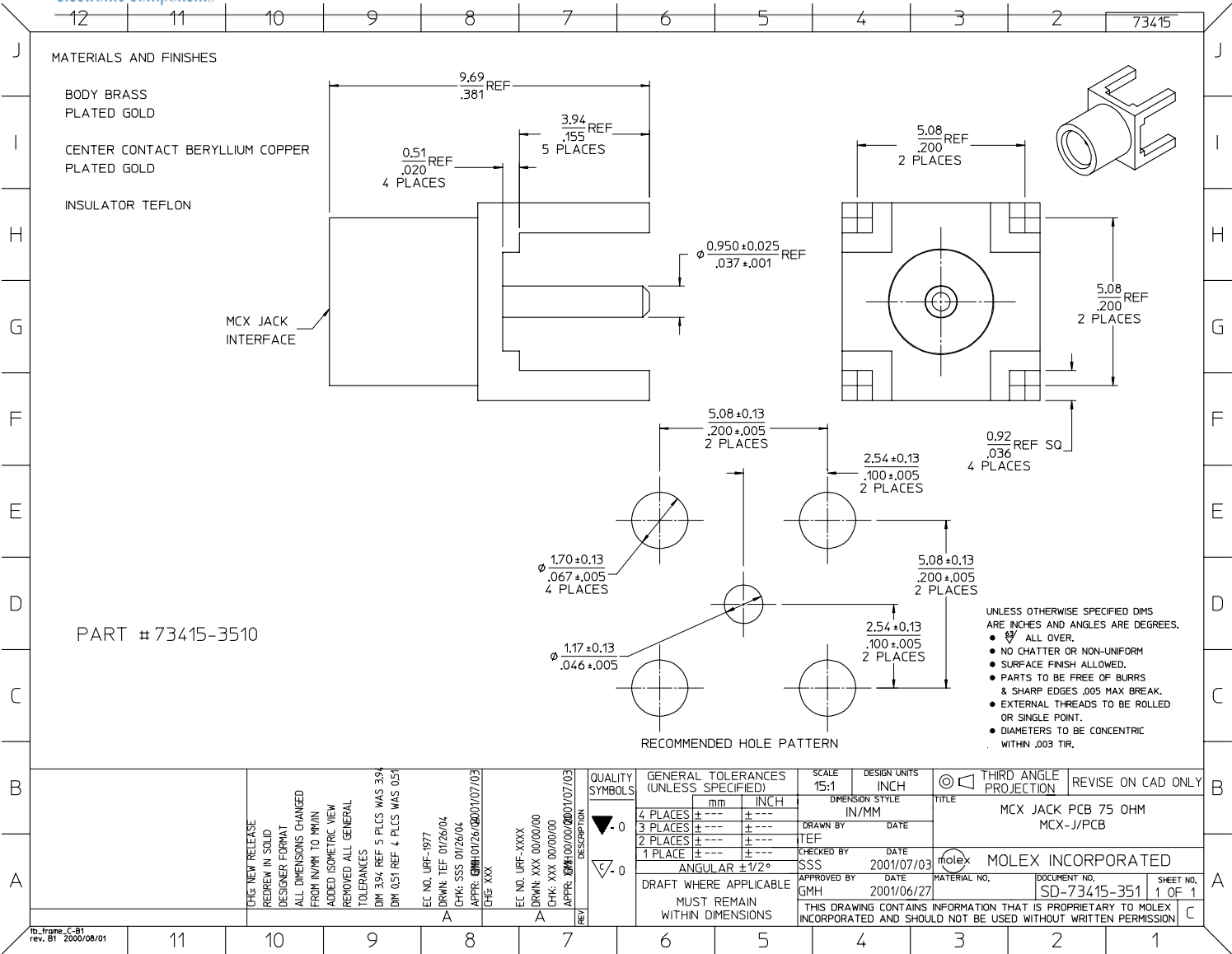
Stocking Distributor

Click to view price, real time Inventory, Delivery & Lifecycle Information:

[Molex Connector Corporation](#)
[0734153510](#)

For any questions, you can email us directly:

sales@integrated-circuit.com



CHG: NEW RELEASE REDREW IN SOLID DESIGNER FORMAT ALL DIMENSIONS CHANGED FROM IN/INCH TO MM/MIN ADDED ISOMETRIC VIEW REMOVED ALL GENERAL TOLERANCES DIM 3.94 REF 5 PLCS WAS 3.94 DIM 0.51 REF 4 PLCS WAS 0.51 EC NO. URF-1977 DRWN: TEF 01/26/04 CHK: SSS 01/26/04 APPR: GMH 01/26/04/0001/07/03 CHG: XXX	EC NO. URF-XXXX DRWN: XXX 00/00/00 CHK: XXX 00/00/00 APPR: XXX 00/00/00/0001/07/03 DESCRIPTION	QUALITY SYMBOLS ▽-0 ▽-0	GENERAL TOLERANCES (UNLESS SPECIFIED) 4 PLACES ± .005 ± .005 3 PLACES ± .005 ± .005 2 PLACES ± .005 ± .005 1 PLACE ± .005 ± .005 ANGULAR ± 1/2°	SCALE 15:1 DESIGN UNITS INCH DIMENSION STYLE IN/MM DRAWN BY DATE CHECKED BY DATE SSS 2001/07/03 APPROVED BY DATE GMH 2001/06/27	THIRD ANGLE PROJECTION REVISE ON CAD ONLY MCX JACK PCB 75 OHM MCX-J/PCB	MOLEX INCORPORATED MATERIAL NO. DOCUMENT NO. SHEET NO. SD-73415-3510 1 OF 1
		DRAFT WHERE APPLICABLE MUST REMAIN WITHIN DIMENSIONS			THIS DRAWING CONTAINS INFORMATION THAT IS PROPRIETARY TO MOLEX INCORPORATED AND SHOULD NOT BE USED WITHOUT WRITTEN PERMISSION	