

Excellent Integrated System Limited

Stocking Distributor

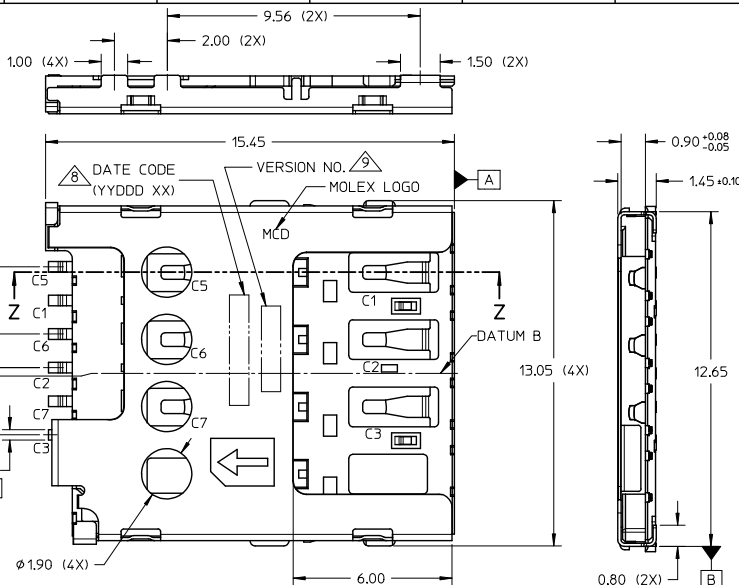
Click to view price, real time Inventory, Delivery & Lifecycle Information:

[Molex Connector Corporation](#)
[0786463001](#)

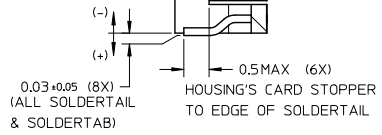
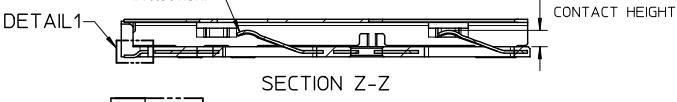
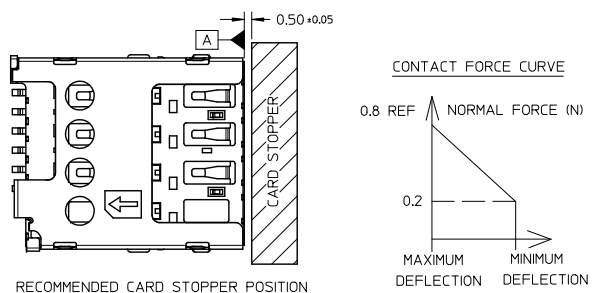
For any questions, you can email us directly:

sales@integrated-circuit.com

10 9 8 7 6 5 4 3 2 1



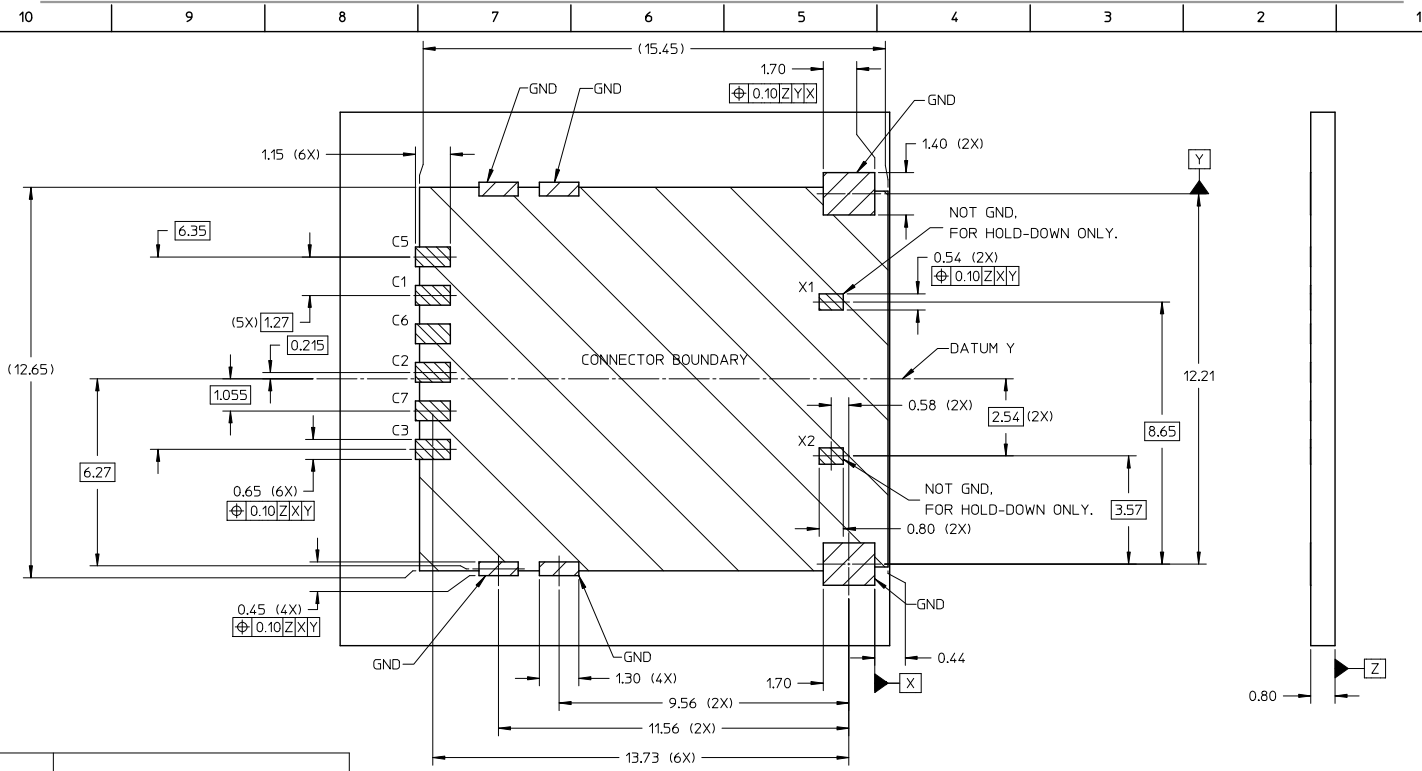
- NOTE:
- MATERIAL: HOUSING : LIQUID CRYSTAL POLYMER (LCP), GLASS FILLED, UL94-V0, COLOR: BLACK
TERMINAL : COPPER ALLOY
METAL SHELL : STAINLESS STEEL
 - FINISH:
TERMINAL:-
CONTACT : SEE TABLE.
SOLDERTAIL: 1.27MM MIN. MATTE TIN OVER 1.27MM NICKEL UNDERPLATE.
SHELL :-
SOLDERTAB : 1.27MM MIN. MATTE TIN OVER 1.27MM NICKEL UNDERPLATE.
TOP SURFACE : MATTE TIN OVER 1.27MM NICKEL UNDERPLATE.
OVERALL (SOLDERTAIL & SOLDERTAB) COPLANARITY 0.08MM, MAX.
 - ALLOWABLE SIM CARD SLIDE OUT W.R.T. DATUM A : 1.00MM MAX.
 - PRODUCT SPECIFICATION: PS-78646-001
 - PACKAGING SPECIFICATION: RPK-78646-001
 - COMPLIANT TO RoHS DIRECTIVE 2011/65/EU AND ELV DIRECTIVE 2000/53/EC.
- DATE CODE: YYDD XX
YEAR: YY DD MONTH: DD LINE 1/2/3
DAY: SHIFT: D - DAY N - NIGHT
- VERSION NO: V1.3



PART NO.	PLATING AT CONTACT
786460001	0.76µM MIN. GOLD OVER 1.27µM NICKEL UNDERPLATE.
786463001	0.38µM MIN. GOLD OVER 1.27µM NICKEL UNDERPLATE.

REV	DESCRIPTION	QUALITY SYMBOLS	GENERAL TOLERANCES (UNLESS SPECIFIED)	DIMENSION STYLE	SCALE	DESIGN UNITS	THIRD ANGLE PROJECTION
B3	REV NOTES EC NO: S2015-1424 DRAWN:JTAN02 CHKD:SCHEONG APPR:KHLIM	$\nabla=0$ $\nabla=0$ $\nabla=0$	4 PLACES ± --- ± --- 3 PLACES ± --- ± --- 2 PLACES ± 0.20 ± --- 1 PLACE ± --- ± --- 0 PLACE ± ± ---	MM ONLY	NTS	METRIC	THIRD ANGLE PROJECTION
			ANGULAR ± 3°	DRAWN BY JTAN02 DATE 2011/02/24	SALES DRAWING		
			DRAFT WHERE APPLICABLE MUST REMAIN WITHIN DIMENSIONS	CHECKED BY FCS00 DATE 2011/03/15	MICRO SIM CONNECTOR		
				APPROVED BY KHLIM DATE 2011/03/16	1.45MM HEIGHT, PUSH PULL		
				MATERIAL NO. SEE TABLE	molex		
				DOCUMENT NO. SD-78646-001	SHEET NO. 1 OF 3		
				THIS DRAWING CONTAINS INFORMATION THAT IS PROPRIETARY TO MOLEX INCORPORATED AND SHOULD NOT BE USED WITHOUT WRITTEN PERMISSION			

9 8 7 6 5 4 3 2 1



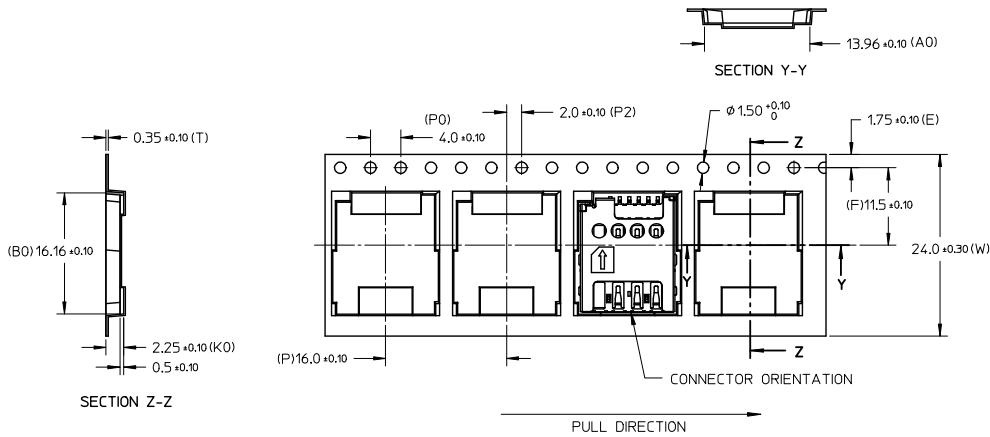
RECOMMENDED PCB LAYOUT
PWB TOLERANCE : ±0.05MM

PIN NO.	ASSIGNMENT
C1	Vcc (SUPPLY VOLTAGE)
C2	RST (RESET SIGNAL)
C3	CLK (CLOCK SIGNAL)
C5	GND
C6	Vpp (VARIABLE SUPPLY VOLTAGE)
C7	I/O (DATA INPUT/OUTPUT)
X1	NOT GND, FOR HOLD DOWN ONLY. (NOTE:X1 IS LINKED TO C1)
X2	NOT GND, FOR HOLD DOWN ONLY. (NOTE:X2 IS LINKED TO C3)

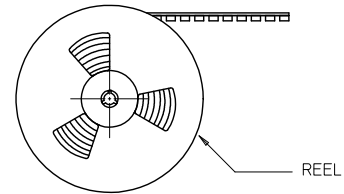
REV NOTES EC NO: S2015-1424 DRAWN: JTAN02 CHKD: SCHEONG APPR: KHLIM	QUALITY SYMBOLS √=0 √=0 √=0	GENERAL TOLERANCES (UNLESS SPECIFIED)		DIMENSION STYLE MM ONLY		SCALE NTS	DESIGN UNITS METRIC	THIRD ANGLE PROJECTION
		4 PLACES ± --- ± ---	3 PLACES ± --- ± ---	DRAWN BY JTAN02	DATE 2011/02/24	TITLE SALES DRAWING MICRO SIM CONNECTOR 1.45MM HEIGHT, PUSH PULL		
		2 PLACES ± 0.20 ± ---	1 PLACE ± --- ± ---	CHECKED BY FCS00	DATE 2011/03/15	molex		
		0 PLACE ± --- ± ---	ANGULAR ± 3°	APPROVED BY KHLIM	DATE 2011/03/16	MATERIAL NO. SEE TABLE	DOCUMENT NO. SD-78646-001	
DRAFT WHERE APPLICABLE MUST REMAIN WITHIN DIMENSIONS		THIS DRAWING CONTAINS INFORMATION THAT IS PROPRIETARY TO MOLEX INCORPORATED AND SHOULD NOT BE USED WITHOUT WRITTEN PERMISSION						

10 9 8 7 6 5 4 3 2 1

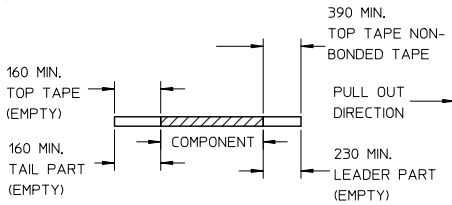
PACKAGING INFORMATION



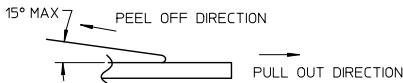
PULL OUT DIRECTION



NOTES :
1. LEADER & TRAILER TAPE



2. PEELING OFF FORCE OF THE TOP TAPE : 20-80gf.
(PEELING DIRECTION AS SHOWN IN THE FOLLOWING FIGURE)



3. TAPE & REEL SPECIFICATION IS AS PER EIA-481.
4. TAPE & REEL QTY. : 1500PCS / REEL.
5. THE TAPE IS TREATED FOR ANTI-STATIC.

REV NOTES EC NO. S2015-1424 DRAWN:JTAN02 CHKD:SCHEONG APPR:KHLIM 2015/06/09 2015/06/10 2015/06/12	QUALITY SYMBOLS ∇=0 ∇=0 ∇=0	GENERAL TOLERANCES (UNLESS SPECIFIED) 4 PLACES ± --- ± --- 3 PLACES ± --- ± --- 2 PLACES ± 0.20 ± --- 1 PLACE ± --- ± --- 0 PLACE ± ±	DIMENSION STYLE MM ONLY DRAWN BY JTAN02 DATE 2011/02/24 CHECKED BY FCS00 DATE 2011/03/15 APPROVED BY KHLIM DATE 2011/03/16	SCALE NTS DESIGN UNITS METRIC THIRD ANGLE PROJECTION	TITLE SALES DRAWING MICRO SIM CONNECTOR 1.45MM HEIGHT, PUSH PULL molex
	DRAFT WHERE APPLICABLE MUST REMAIN WITHIN DIMENSIONS	MATERIAL NO. SEE TABLE SIZE A3	DOCUMENT NO. SD-78646-001 SHEET NO. 3 OF 3	THIS DRAWING CONTAINS INFORMATION THAT IS PROPRIETARY TO MOLEX INCORPORATED AND SHOULD NOT BE USED WITHOUT WRITTEN PERMISSION	

10 9 8 7 6 5 4 3 2 1