



**Distributor of Molex Connector Corporation: Excellent Integrated System Limited**  
Datasheet of 0873400675 - Connector Receptacle 6 Position 0.079" (2.00mm) Gold Surface  
Mount

Contact us: [sales@integrated-circuit.com](mailto:sales@integrated-circuit.com) Website: [www.integrated-circuit.com](http://www.integrated-circuit.com)

---

## **Excellent Integrated System Limited**

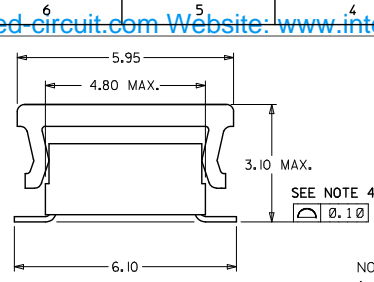
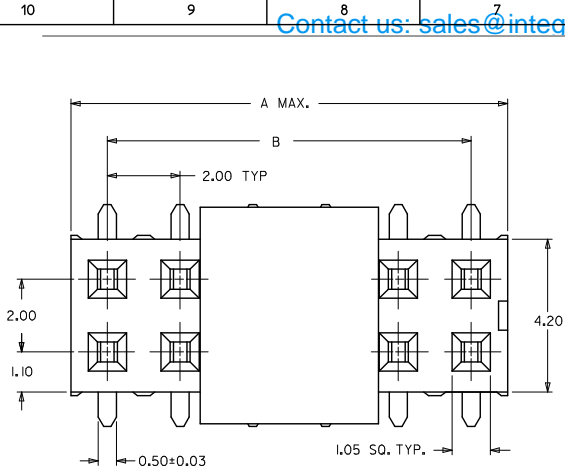
Stocking Distributor

Click to view price, real time Inventory, Delivery & Lifecycle Information:

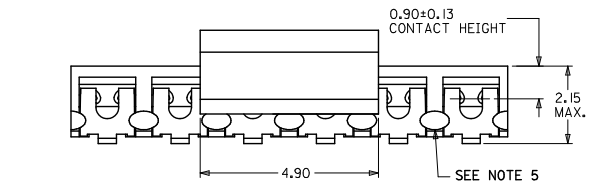
[Molex Connector Corporation](#)  
[0873400675](#)

For any questions, you can email us directly:  
[sales@integrated-circuit.com](mailto:sales@integrated-circuit.com)

Contact us: [sales@integrated-circuit.com](mailto:sales@integrated-circuit.com) Website: [www.integrated-circuit.com](http://www.integrated-circuit.com)



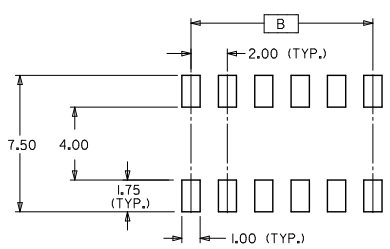
PART NUMBER (WITH CAP IN TUBE)	PART NUMBER (WITH CAP IN TAPE & REEL)	CKT. SIZE	DIM. A	DIM. B
87340-04*5	87340-04*6	04	4.00	2.00
87340-06*5	87340-06*6	06	6.00	4.00
87340-08*5	87340-08*6	08	8.00	6.00
87340-10*5	87340-10*6	10	10.00	8.00
87340-12*5	87340-12*6	12	12.00	10.00
87340-16*5	87340-16*6	16	16.00	14.00



**PART NO. LEGEND**

87340 - \* \* \* \*  
 CKTS SIZE  
 PLATING OPTIONS (SEE NOTE 3)  
 PACKAGING OPTIONS  
 5 - PACKAGED IN TUBE.  
 6 - PACKAGED IN TAPE & REEL.

- NOTES :
- FOR ILLUSTRATION PURPOSES, DRAWING SHOWS PART 12 CIRCUIT SIZE.
  - MATERIAL :  
HOUSING :  
LCP GLASS FILLED, UL 94V-0  
SUITABLE FOR SURFACE-MOUNT SOLDERING PROCESS.  
COLOR : BLACK  
TERMINAL :  
PHOSPHOR BRONZE ALLOY
  - PLATING FINISH:  
- \*\*6\*  
0.05-0.25um GOLD AT TERMINAL CONTACT AREA,  
1.90um MIN TIN IN SOLDERTAIL AREA BOTH OVER  
1.27um MIN NICKEL OVERALL.  
- \*\*7\*  
0.38um MIN GOLD AT TERMINAL CONTACT AREA,  
1.90um MIN TIN IN SOLDERTAIL AREA BOTH OVER  
1.27um MIN NICKEL OVERALL.  
- \*\*8\*  
0.76um MIN GOLD AT TERMINAL CONTACT AREA,  
1.90um MIN TIN IN SOLDERTAIL AREA BOTH OVER  
1.27um MIN NICKEL OVERALL.
  - COPLANARITY OF P.C TAIL TO BE MEASURED BY RESTING THE PART ON A FLAT GAGE SURFACE.
  - THIS AREA OF PART TO BE HEAT-STAKED TO RETAIN CONTACTS.
  - POSITION OF CAP TO BE LOCATED AT CENTRE OF DIMENSION 'A' REGARDLESS OF CIRCUIT SIZE.
  - PRODUCT SPECIFICATION PS-87340 APPLIES.
  - PART TO BE PACKED IN TUBE OR TAPE & REEL. SEE SHEET 2 FOR PACKAGING DETAILS.
  - CONTACT FACTORY FOR PARTS AVAILABILITY.

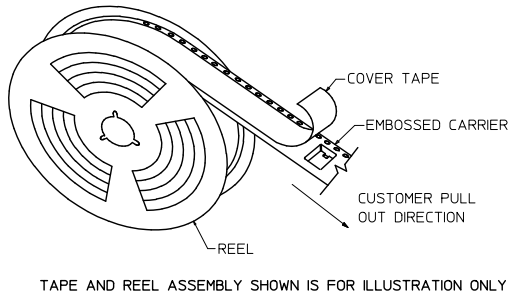
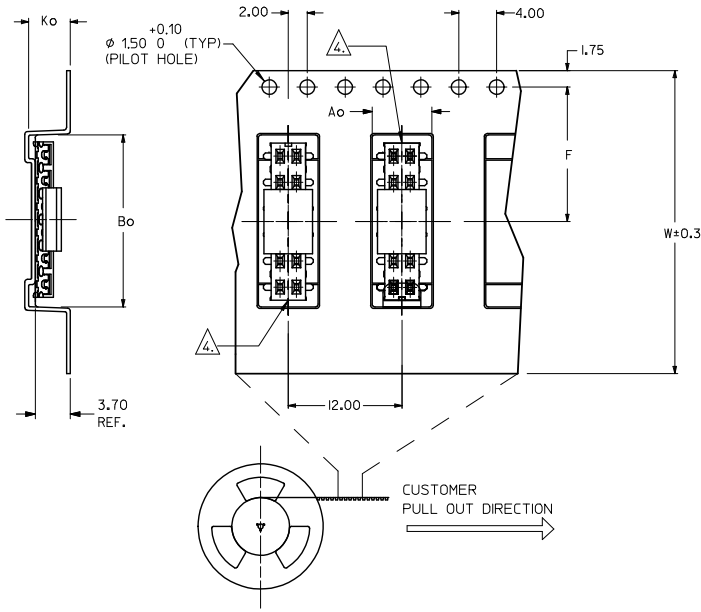


RECOMMENDED SOLDER PAD DESIGN (NTS)

QUALITY SYMBOLS	GENERAL TOLERANCES (UNLESS SPECIFIED)		DIMENSION STYLE		SCALE	DESIGN UNITS	THIRD ANGLE PROJECTION
	mm	INCH	MM ONLY	DATE			
▽=0	4 PLACES ±---	±---	DRAWN BY	DATE	NTS	METRIC	MGRID, VLPR II TOP ENTRY RECEPTACLE W/O LOC PEGS, SMT
▽=0	3 PLACES ±---	±---	PTLIM	1996/04/03			
	2 PLACES ±0.20	±---	CHECKED BY	DATE	Molex INCORPORATED		
	1 PLACE ±---	±---	SKTOH	1996/04/08			
	ANGULAR ± 3°		APPROVED BY	DATE	SD-87340-***74		
			RWONG	1996/04/19			
DRAFT WHERE APPLICABLE MUST REMAIN WITHIN DIMENSIONS			MATERIAL NO.	DOCUMENT NO.	SHEET NO.		
			SEE TABLE		1 OF 2		
			THIS DRAWING CONTAINS INFORMATION THAT IS PROPRIETARY TO MOLEX INCORPORATED AND SHOULD NOT BE USED WITHOUT WRITTEN PERMISSION				

Contact us: sales@integrated-circuit.com Website: www.integrated-circuit.com

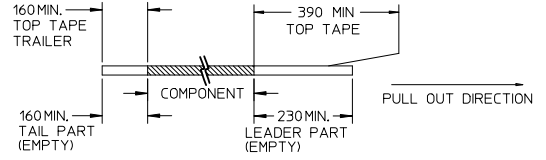
EMBOSSED CARRIER TAPE WITH DIMENSIONS  
(12 CKT IS SHOWN FOR ILLUSTRATION ONLY)



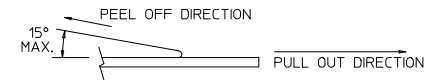
PART NO. (WITH CAP IN TAPE & REEL)	CKT SIZE	Ao	Bo	F	W	Ko
87340-0466	04	6.70	5.30	11.50	24.00	5.30
87340-0476	04	6.70	5.30	11.50	24.00	5.30
87340-0676	06	6.70	6.40	11.50	24.00	5.30
87340-0686	06	6.70	6.40	11.50	24.00	5.30
87340-0876	08	6.70	8.50	11.50	24.00	5.30
87340-1076	10	6.70	10.40	11.50	24.00	5.30
87340-1276	12	6.70	12.40	11.50	24.00	5.30
87340-1686	16	6.70	16.30	11.50	24.00	5.30

NOTES:

1. LEADER AND TRAILER TAPE



2. PEELING OFF FORCE OF THE TOP TAPE: 20-80gf.  
(PEELING DIRECTION AS SHOWN IN FOLLOWING FIGURE)



3. PACKAGING STANDARD IS AS PER EIA-481.

4. TAPE & REEL QUANTITY = 1000 PCS/REEL

△ NO FIX ORIENTATION OF ASSEMBLY PART IN T&R.

QUALITY SYMBOLS	GENERAL TOLERANCES (UNLESS SPECIFIED)		DIMENSION STYLE		SCALE	DESIGN UNITS	THIRD ANGLE PROJECTION	
	mm	INCH	MM ONLY	DATE				
▽=0	4 PLACES ± ---	± ---	DRAWN BY	DATE	NTS	METRIC	MGRID, VLPR II TOP ENTRY RECEPTACLE W/O LOC PEGS, SMT	
▽=0	3 PLACES ± ---	± ---	CHECKED BY	DATE				
	2 PLACES ± 0.20	± ---	SKTOH	DATE				
	1 PLACE ± ---	± ---	APPROVED BY	DATE				
	ANGULAR ± 3°		RWONG	DATE	1996/04/19	Molex MOLEX INCORPORATED		
DRAFT WHERE APPLICABLE MUST REMAIN WITHIN DIMENSIONS			MATERIAL NO.		DOCUMENT NO.	SD-87340-***74		
			SEE TABLE				SHEET NO. 2 OF 2	
			THIS DRAWING CONTAINS INFORMATION THAT IS PROPRIETARY TO MOLEX INCORPORATED AND SHOULD NOT BE USED WITHOUT WRITTEN PERMISSION					