



Distributor of Molex Connector Corporation: Excellent Integrated System Limited
Datasheet of 0873686140 - Connector Receptacle 50 Position 0.079" (2.00mm) Gold Surface
Mount, Right Angle

Contact us: sales@integrated-circuit.com Website: www.integrated-circuit.com

Excellent Integrated System Limited

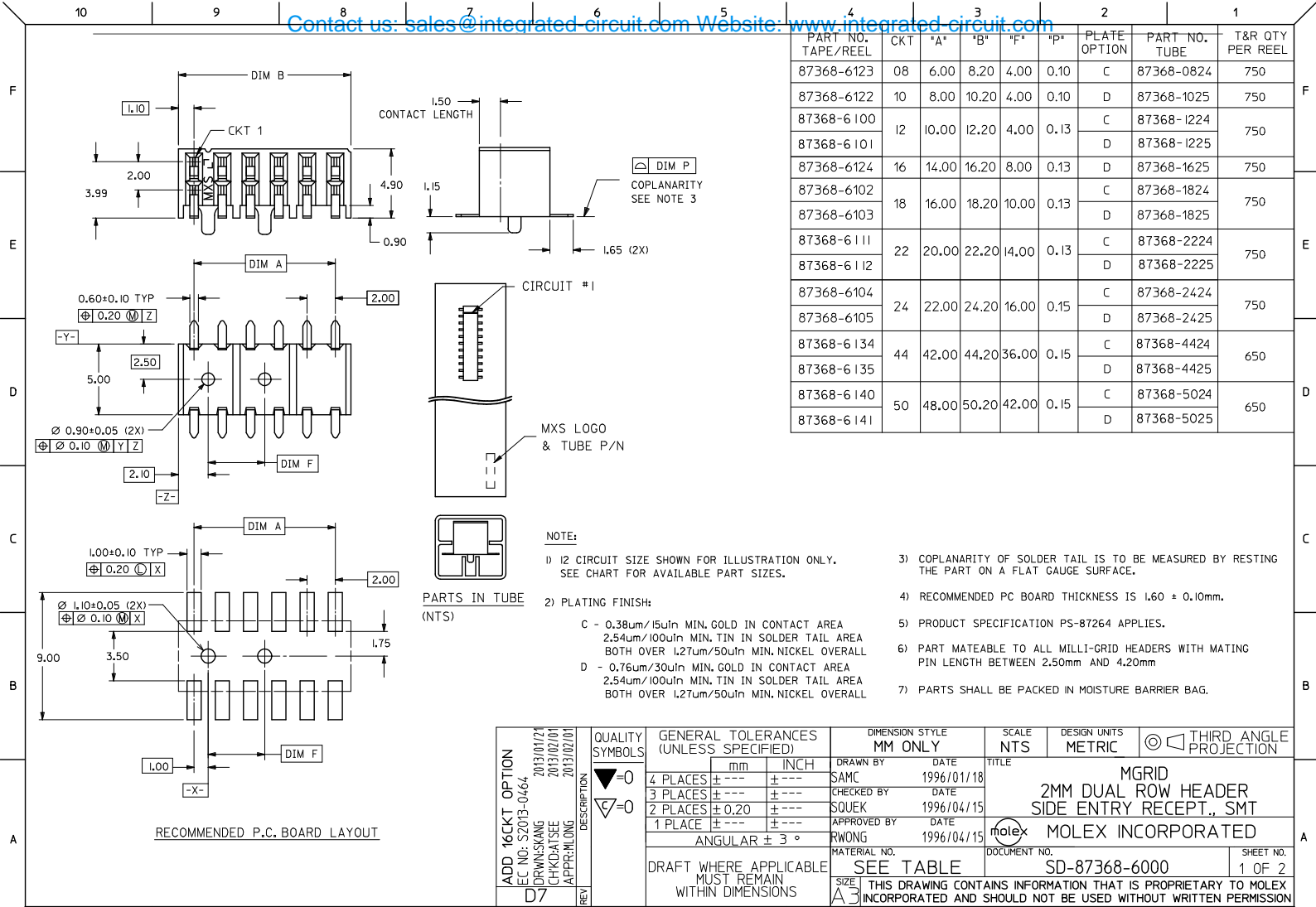
Stocking Distributor

Click to view price, real time Inventory, Delivery & Lifecycle Information:

[Molex Connector Corporation](#)
[0873686140](#)

For any questions, you can email us directly:
sales@integrated-circuit.com

Contact us: sales@integrated-circuit.com Website: www.integrated-circuit.com



PART NO. TAPE/REEL	CKT	"A"	"B"	"F"	"P"	PLATE OPTION	PART NO. TUBE	T&R QTY PER REEL
87368-6123	08	6.00	8.20	4.00	0.10	C	87368-0824	750
87368-6122	10	8.00	10.20	4.00	0.10	D	87368-1025	750
87368-6100	12	10.00	12.20	4.00	0.13	C	87368-1224	750
87368-6101						D	87368-1225	750
87368-6124	16	14.00	16.20	8.00	0.13	D	87368-1625	750
87368-6102	18	16.00	18.20	10.00	0.13	C	87368-1824	750
87368-6103						D	87368-1825	750
87368-6111	22	20.00	22.20	14.00	0.13	C	87368-2224	750
87368-6112						D	87368-2225	750
87368-6104	24	22.00	24.20	16.00	0.15	C	87368-2424	750
87368-6105						D	87368-2425	750
87368-6134	44	42.00	44.20	36.00	0.15	C	87368-4424	650
87368-6135						D	87368-4425	650
87368-6140	50	48.00	50.20	42.00	0.15	C	87368-5024	650
87368-6141						D	87368-5025	650

QUALITY SYMBOLS	GENERAL TOLERANCES (UNLESS SPECIFIED)		DIMENSION STYLE		SCALE	DESIGN UNITS	THIRD ANGLE PROJECTION
	mm	INCH	MM ONLY		NTS	METRIC	
▽=0	4 PLACES ± ---	± ---	DRAWN BY	DATE	MGRID 2MM DUAL ROW HEADER SIDE ENTRY RECEPT., SMT MOLEX INCORPORATED		
▽=0	3 PLACES ± ---	± ---	SAMC	1996/01/18			
	2 PLACES ± 0.20	± ---	CHECKED BY	DATE			
	1 PLACE ± ---	± ---	SQUEK	1996/04/15			
	ANGULAR ± 3°		APPROVED BY	DATE	MATERIAL NO. SEE TABLE DOCUMENT NO. SD-87368-6000 SHEET NO. 1 OF 2		
DRAFT WHERE APPLICABLE MUST REMAIN WITHIN DIMENSIONS			THIS DRAWING CONTAINS INFORMATION THAT IS PROPRIETARY TO MOLEX INCORPORATED AND SHOULD NOT BE USED WITHOUT WRITTEN PERMISSION				

Contact us: sales@integrated-circuit.com Website: www.integrated-circuit.com

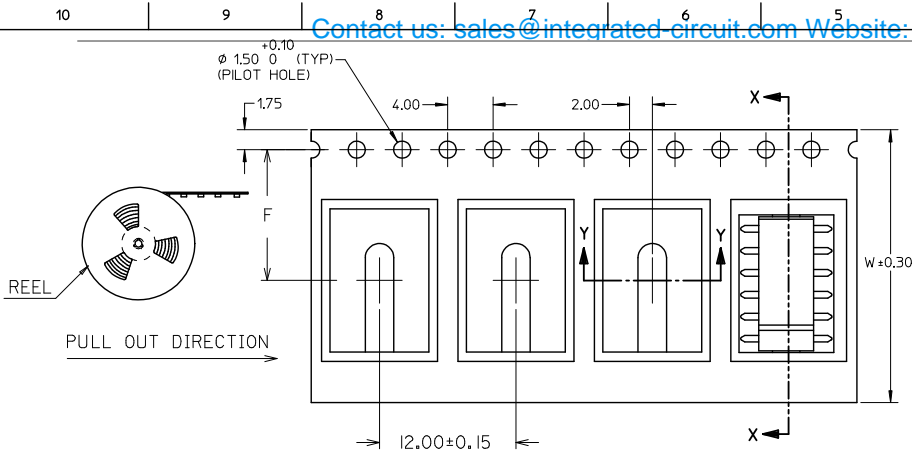
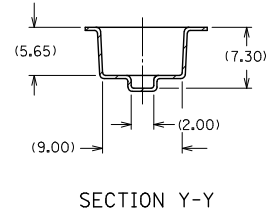
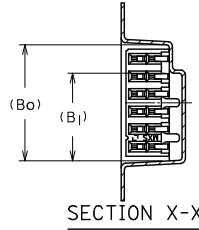
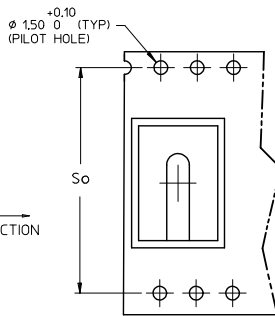


FIG 1 (FOR So DIM ILLUSTRATION)

CKT SIZE	PART NO. TAPE/REEL	W	F	So	Bo	Bl
08	87368-6123	24	11.50	NA	8.60	-
10	87368-6122	24	11.50	NA	10.60	7.00
12	87368-6100	24	11.50	NA	12.60	9.00
	87368-6101	24	11.50	NA	12.60	9.00
16	87368-6124	24	11.50	NA	16.60	13.00
18	87368-6102	32	14.20	28.40	18.60	15.00
	87368-6103	32	14.20	28.40	18.60	15.00
22	87368-6111	32	14.20	28.40	22.60	19.00
	87368-6112	32	14.20	28.40	22.60	19.00
24	87368-6104	44	20.20	40.40	24.60	21.00
	87368-6105	44	20.20	40.40	24.60	21.00
44	87368-6134	56	26.20	52.40	44.60	41.00
	87368-6135	56	26.20	52.40	44.60	41.00
50	87368-6140	72	34.20	68.40	50.60	47.00
	87368-6141	72	34.20	68.40	50.60	47.00

NOTES:

- LEADER AND TRAILER TAPE
- PEELING OFF FORCE OF THE TOP TAPE: 20-80gf.
 (PEELING DIRECTION AS SHOWN IN FOLLOWING FIGURE)
- PACKAGING STANDARD IS AS PER EIA-481.
- TAPE & REEL QUANTITY = SEE TABLE



ADD 16CKT OPTION EC No. S2013-0464 DRW:SKANG 2013/01/27 CHK:DATSEE 2013/02/01 APPR:MLONG 2013/02/01 REV DESCRIPTION	QUALITY SYMBOLS	GENERAL TOLERANCES (UNLESS SPECIFIED)	DIMENSION STYLE	SCALE	DESIGN UNITS	THIRD ANGLE PROJECTION
	▼=0 ▽=0	4 PLACES ± --- ± --- 3 PLACES ± --- ± --- 2 PLACES ± 0.20 ± --- 1 PLACE ± --- ± --- ANGULAR ± 3°	MM ONLY	NTS	METRIC	MGRID 2MM DUAL ROW HEADER SIDE ENTRY RECEPT., SMT
		DRAFT WHERE APPLICABLE MUST REMAIN WITHIN DIMENSIONS	DRAWN BY DATE SAMC 1996/01/18 CHECKED BY DATE SQUEK 1996/04/15 APPROVED BY DATE RWONG 1996/04/15			MOLEX INCORPORATED DOCUMENT NO. SD-87368-6000 SHEET NO. 2 OF 2
			MATERIAL NO. SEE TABLE			THIS DRAWING CONTAINS INFORMATION THAT IS PROPRIETARY TO MOLEX INCORPORATED AND SHOULD NOT BE USED WITHOUT WRITTEN PERMISSION