

## Excellent Integrated System Limited

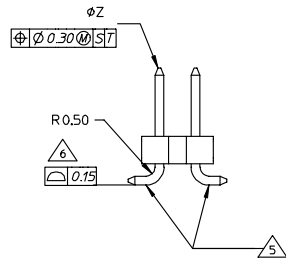
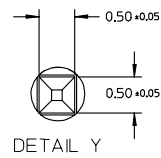
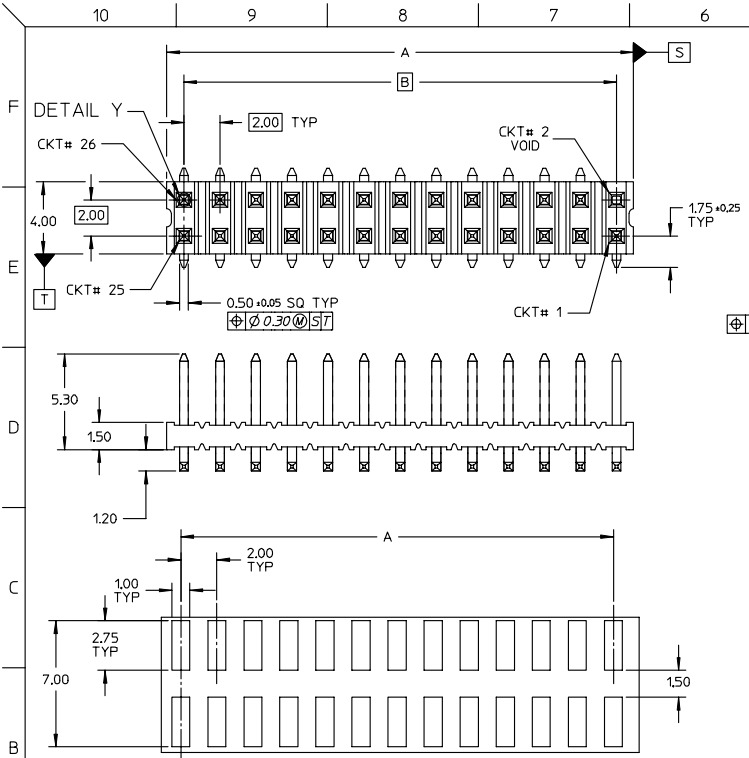
Stocking Distributor

Click to view price, real time Inventory, Delivery & Lifecycle Information:

[Molex Connector Corporation](#)  
[0877598010](#)

For any questions, you can email us directly:

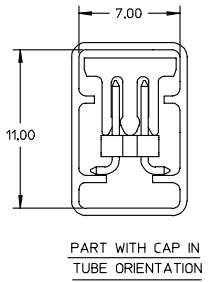
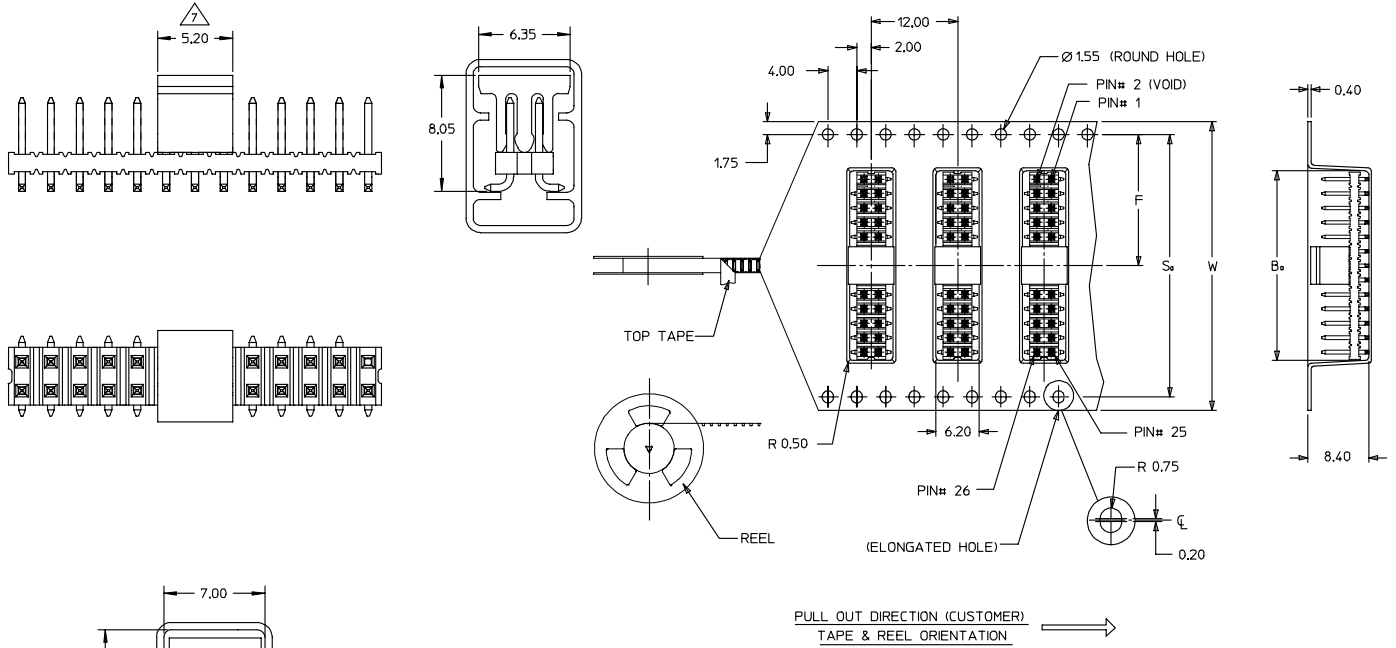
[sales@integrated-circuit.com](mailto:sales@integrated-circuit.com)



- NOTE:
- MATERIAL:  
HSG & CAP - HIGH TEMPERATURE THERMOPLASTIC, UL 94V-0, COLOUR BLACK  
PIN - 0.50 SQ PHOSPHOR BRONZE
  - PLATING:  
0.38um MIN GOLD PLATE AT CONTACT AREA,  
TIN PLATE AT SOLDER AREA,  
BOTH OVER NICKEL UNDERPLATE
  - PIN PUSHOUT FORCE: 1KG MIN IN EITHER DIRECTION
  - PRODUCT SPEC PS-87761-100 APPLIES.
- △ BEND DEPRESSION IS ACCEPTABLE SO LONG AS IT DOES NOT AFFECT THE OVERALL COPLANARITY OF TAIL.
  - △ COPLANARITY IS TO BE MEASURED BY RESTING THE SOLDER TAIL ON A GAUGE SURFACE.
  - △ CAP TO BE LOCATED AS CENTRAL OF PART AS POSSIBLE  
TOP SURFACE OF CAP TO BE FLAT FOR THE PURPOSE OF PICK & PLACE BY VACUUM SUCTION NOZZLE.
8. TUBE LENGTH IS 560MM REF STANDARD.

RECOMMENDED PCB LAYOUT

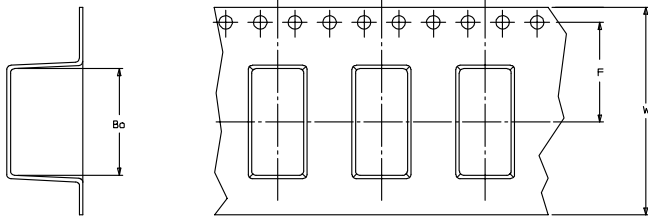
EC NO: S2004-0293 DRAWN: KSEE 2004/01/20 CHECKED: KCLING 2004/01/30 APPR: SKTOH 2004/02/05	QUALITY SYMBOLS ▽ -0 ▽ -0	GENERAL TOLERANCES (UNLESS SPECIFIED)		SCALE: NTS	DESIGN UNITS: METRIC	THIRD ANGLE PROJECTION	REVISE ON CAD ONLY		
				DIMENSION STYLE: MM ONLY		TITLE: SALES DRAWING			
				DRAFT WHERE APPLICABLE MUST REMAIN WITHIN DIMENSIONS		DRAWN BY: KSEE DATE: 2003/12/24		MGRID 2MM DUAL ROW SMT HDR IN TUBE WITH VOID	
						CHECKED BY: KCLING DATE: 2004/01/12		MOLEX INCORPORATED	
A	REV			APPROVED BY: SKTOH DATE: 2004/01/12	MATERIAL NO.: SEE TABLE	DOCUMENT NO.: SD-87759-119	SHEET NO.: 1 OF 4		



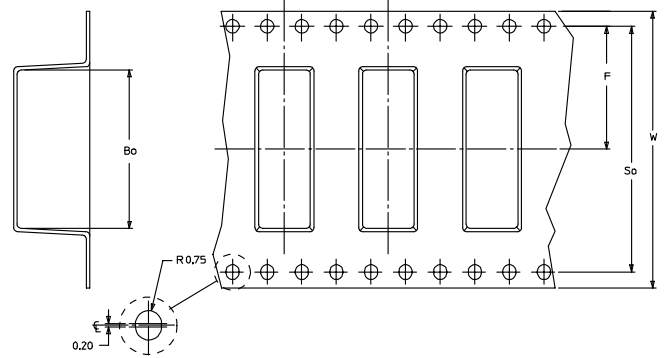
EC NO: S2004-0293 DRAWN/SEE: 2004/01/30 CHKD/KCLING: 2004/01/30 APPR: SKTOH: 2004/02/05	QUALITY SYMBOLS -0 -0	GENERAL TOLERANCES (UNLESS SPECIFIED)		SCALE: NTS	DESIGN UNITS: METRIC	THIRD ANGLE PROJECTION	REVISE ON CAD ONLY	
		4 PLACES ± --- ± ---	3 PLACES ± --- ± ---	DIMENSION STYLE: MM ONLY		TITLE: SALES DRAWING MGRID 2MM DUAL ROW SMT HDR IN TUBE WITH VOID		
A	DESCRIPTION	2 PLACES ± 0.2 ± ---	1 PLACE ± --- ± ---	DRAWN BY: KSEE	DATE: 2003/12/24	MOLEX INCORPORATED		
		ANGULAR ± 3°		CHECKED BY: KCLING	DATE: 2004/01/12	MATERIAL NO.:	DOCUMENT NO.:	SHEET NO.:
		DRAFT WHERE APPLICABLE MUST REMAIN WITHIN DIMENSIONS		APPROVED BY: SKTOH	DATE: 2004/01/12	SEE TABLE	SD-87759-119	2 OF 4
THIS DRAWING CONTAINS INFORMATION THAT IS PROPRIETARY TO MOLEX INCORPORATED AND SHOULD NOT BE USED WITHOUT WRITTEN PERMISSION								

10 9 8 7 6 5 4 3 2 87759

EMBOSSED CARRIER TAPE TYPE 'A'



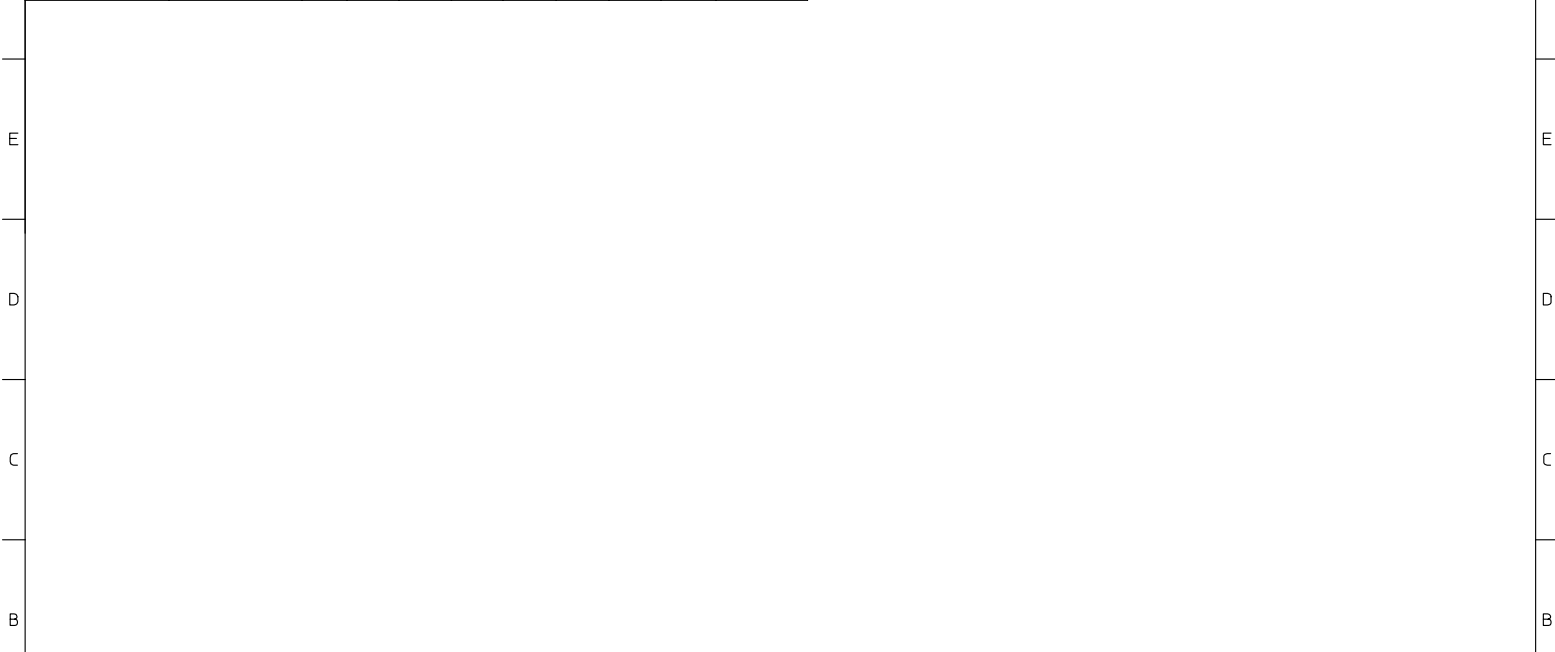
EMBOSSED CARRIER TAPE TYPE 'B'



EC NO: S2004-0293 DRAWN/SEE: 2004/01/20 CHKD/KCLING: 2004/01/30 APPR: SKTOH: 2004/02/05	QUALITY SYMBOLS -0 -0	GENERAL TOLERANCES (UNLESS SPECIFIED)		SCALE	DESIGN UNITS	THIRD ANGLE PROJECTION	REVISE ON CAD ONLY	
				NTS	METRIC			
				DIMENSION STYLE		TITLE		
				MM ONLY		SALES DRAWING MGRID 2MM DUAL ROW SMT HDR IN TUBE WITH VOID		
A	REV	4 PLACES	± ---	± ---	DRAWN BY	DATE	MATERIAL NO. SEE TABLE	
		3 PLACES	± ---	± ---	KSEE	2003/12/24		DOCUMENT NO. SD-87759-119
		2 PLACES	± 0.2	± ---	CHECKED BY	DATE		
		1 PLACE	± ---	± ---	KCLING	2004/01/12	MOLEX INCORPORATED	
		ANGULAR ± 3°		APPROVED BY	DATE	THIS DRAWING CONTAINS INFORMATION THAT IS PROPRIETARY TO MOLEX INCORPORATED AND SHOULD NOT BE USED WITHOUT WRITTEN PERMISSION		
		DRAFT WHERE APPLICABLE MUST REMAIN WITHIN DIMENSIONS		SKTOH	2004/01/12			

8 7 6 5 4 3 2 1

10	9	8	7	6	5	4	3	2	87759	
PART NUMBER WITH CAP IN TUBE	PART NUMBER WITH CAP IN TAPE AND REEL.	CKT SIZE	VOID CKT	A	B	Bo	F	So	W	EMBOSSSED TYPE
87759-8011	87759-8010	26	2	25.90	24.00	26.20	20.20	40.40	44.00	B



EC. NO. S2004-0293 DRAWN/SEE 2004/01/30 CHKD/KCLING 2004/01/30 APPR: SKTOH 2004/02/05	QUALITY SYMBOLS ▽-0 ▽.0	GENERAL TOLERANCES (UNLESS SPECIFIED)		SCALE NTS	DESIGN UNITS METRIC	THIRD ANGLE PROJECTION	REVISE ON CAD ONLY	
		4 PLACES ± --- ± ---	3 PLACES ± --- ± ---	DIMENSION STYLE MM ONLY		TITLE SALES DRAWING MGRID 2MM DUAL ROW SMT HDR IN TUBE WITH VOID		
		2 PLACES ± 0.2 ± ---	1 PLACE ± --- ± ---	DRAWN BY KSEE	DATE 2003/12/24	MATERIAL NO. SEE TABLE		
		ANGULAR ± 3 °		CHECKED BY KCLING	DATE 2004/01/12	DOCUMENT NO. SD-87759-119	SHEET NO. 4 OF 4	
A	REV	DRAFT WHERE APPLICABLE MUST REMAIN WITHIN DIMENSIONS		APPROVED BY SKTOH	DATE 2004/01/12	THIS DRAWING CONTAINS INFORMATION THAT IS PROPRIETARY TO MOLEX INCORPORATED AND SHOULD NOT BE USED WITHOUT WRITTEN PERMISSION		