

Excellent Integrated System Limited

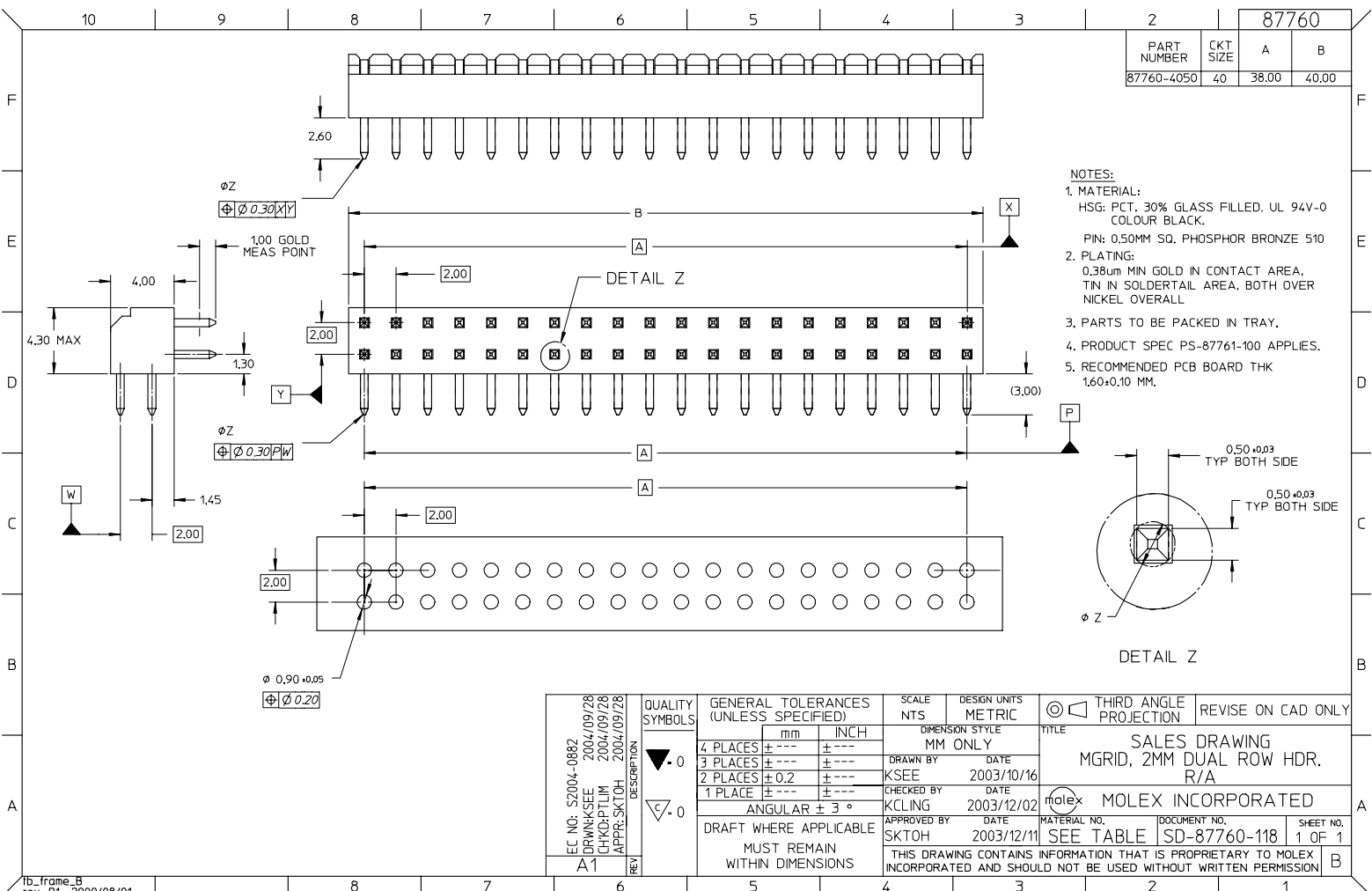
Stocking Distributor

Click to view price, real time Inventory, Delivery & Lifecycle Information:

[Molex Connector Corporation](#)
[0877604050](#)

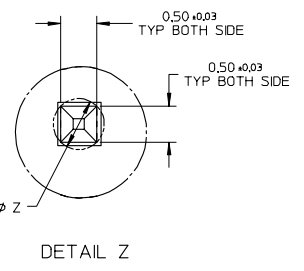
For any questions, you can email us directly:

sales@integrated-circuit.com



PART NUMBER		CKT SIZE	A	B
87760-4050		40	38.00	40.00

- NOTES:
- MATERIAL:
HSG: PCT. 30% GLASS FILLED, UL 94V-0 COLOUR BLACK.
PIN: 0.50MM SQ. PHOSPHOR BRONZE 510
 - PLATING:
0.38um MIN GOLD IN CONTACT AREA, TIN IN SOLDER TAIL AREA, BOTH OVER NICKEL OVERALL
 - PARTS TO BE PACKED IN TRAY.
 - PRODUCT SPEC PS-87761-100 APPLIES.
 - RECOMMENDED PCB BOARD THK 1.60±0.10 MM.



EC NO: S2004-0882 DRAWN/SEE: 2004/09/28 CHKD/PTL/IN: 2004/09/28 APPR/SKTOH: 2004/09/28	QUALITY SYMBOLS ▽-0 ▽-0	GENERAL TOLERANCES (UNLESS SPECIFIED)		SCALE	DESIGN UNITS	THIRD ANGLE PROJECTION	REVISE ON CAD ONLY
		mm	INCH	NTS	METRIC		
		4 PLACES	± ---	± ---	DIMENSION STYLE		MOLEX INCORPORATED MATERIAL NO. SEE TABLE DOCUMENT NO. SD-87760-118 SHEET NO. 1 OF 1
		3 PLACES	± ---	± ---	MM ONLY		
2 PLACES	± 0.2	± ---	DRAWN BY	DATE			
1 PLACE	± ---	± ---	KSEE	2003/10/16			
ANGULAR ± 3°		DRAFT WHERE APPLICABLE		CHECKED BY	DATE	TITLE	
MUST REMAIN WITHIN DIMENSIONS		THIS DRAWING CONTAINS INFORMATION THAT IS PROPRIETARY TO MOLEX INCORPORATED AND SHOULD NOT BE USED WITHOUT WRITTEN PERMISSION		KCLING	2003/12/02	SALES DRAWING MGRID, 2MM DUAL ROW HDR. R/A	
A1	REV			APPROVED BY	DATE		
				SKTOH	2003/12/11		