

Excellent Integrated System Limited

Stocking Distributor

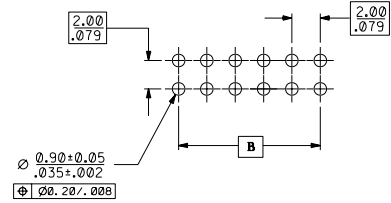
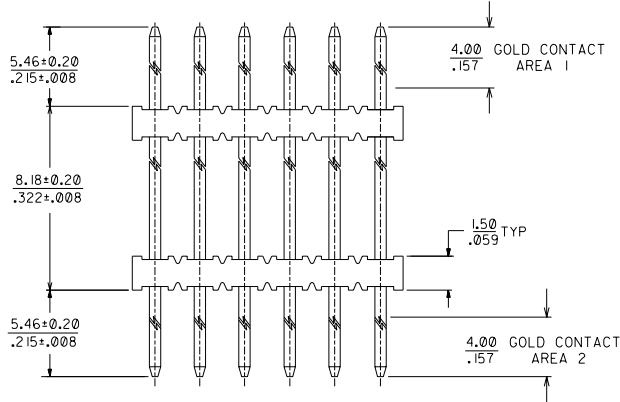
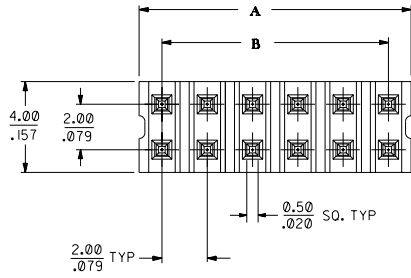
Click to view price, real time Inventory, Delivery & Lifecycle Information:

[Molex Connector Corporation](#)
[0877610007](#)

For any questions, you can email us directly:

sales@integrated-circuit.com

PART NO.	CKT SIZE	DIMENSION			
		A		B	
		MM	INCH	MM	INCH
87761-0006	04	3.90	.154	2.00	.079
87761-0007	06	5.90	.232	4.00	.157
87761-0008	12	11.90	.468	10.00	.394



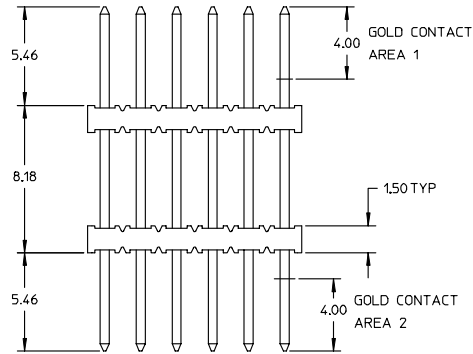
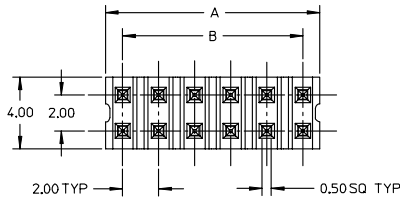
RECOMMENDED PCB PATTERN
(SCALE 5:1)

NOTES:

- 1) PLATING:
0.38um/15u" MIN GOLD IN BOTH CONTACT AREA BOTH OVER NICKEL OVERALL.
- 2) MATERIAL:
HSG : HIGH TEMP THERMOPLASTIC, COLOR BLACK
PIN : 0.50mm SQ. COPPER ALLOY.
- 3) 12 CKT USED FOR ILLUSTRATION ONLY.
- 4) PACKED IN POCKET TRAY.
- 5) PIN PUSHOUT FORCE : 1 KG MIN IN EITHER DIRECTION.
- 6) CKT 4 & 6 IS CUT FROM CKT 8 AND 12 RESPECTIVELY, ROUGH EDGES ARE EXPECTED ALONG THE CUTTING EDGES.

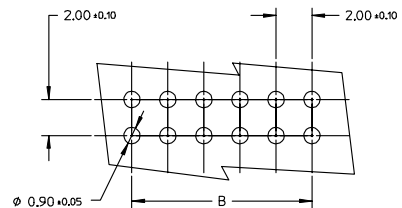
REL PER PDR#S-000272-00-00 CIR NO. S2003-0276 DRWN: KSEE 02/19 CHK: KCLING 03/02 APPR: PTLIM 03/02	QUALITY SYMBOLS MAJOR ▼ = 0 CRITICAL ▽ = 0	GENERAL TOLERANCES: (UNLESS SPECIFIED)	SCALE NTS	DESIGN UNITS	THIRD ANGLE PROJECTION	DIMENSIONS:	SHT	REV	
			mm	mm	<input checked="" type="checkbox"/> mm <input type="checkbox"/> INCH	<input checked="" type="checkbox"/> mm <input type="checkbox"/> INCH <input type="checkbox"/> mm ONLY			
		4 PLACES ±0. - ±. -		DRAWN BY & DATE	TITLE:				
		3 PLACES ±0. - ±. 0.10		KSEE 02/19	2MM DUAL ROW, DUAL WAFER, 4,6 & 12 CKT. VERTICAL THROUGH HOLE HDR.				
2 PLACES ±0.20 ±. -		CHECKED BY & DATE	MATERIAL NO.		DRAWING NO.	SHEET NO.			
1 PLACE ±0. - ±. -		KCLING 03/02	SEE TABLE		SD-87761-007	1 OF 1			
ANGULAR: ± 3 °		APPROVED BY & DATE	CAD FILENAME						
		PTLIM 03/02	-						
THIS DRAWING CONTAINS INFORMATION THAT IS PROPRIETARY TO MOLEX INCORPORATED AND SHOULD NOT BE USED WITHOUT WRITTEN PERMISSION.								SIZE	A3

87761			
PART NUMBER	CKT SIZE	DIM.A	DIM.B
87761-0006 $\triangle/6$	4	3.90	2.00
87761-0007 $\triangle/6$	6	5.90	4.00
87761-0008	12	11.90	10.00



NOTES:

1. MATERIAL:
HOUSING: HIGH TEMP THERMOPLASTIC, COLOR: BLACK
PIN: 0.50mm SQ. COPPER ALLOY
2. PLATING: 0.38µm/15µm MIN GOLD IN BOTH CONTACT AREA
BOTH OVER NICKEL OVERALL
3. 12 CKT USED FOR ILLUSTRATION ONLY
4. PACKED IN POCKET TRAY
5. PIN PUSHOUT FORCE: 1KG MIN IN EITHER DIRECTION
6. \triangle CKT 4 AND 6 IS CUT FROM CKT 8 AND 12 RESPECTIVELY.
ROUGH EDGES ARE EXPECTED ALONG THE CUTTING EDGES.
7. PRODUCT SPECIFICATION: PS-87761-100



RECOMMENDED PCB PATTERN

EC NO: S2004-0112 DRAWN: RSHAN 2003/09/24 CHKD: KCLING 2003/09/24 APPR: SKTOH 2003/10/07	QUALITY SYMBOLS -0 -0	GENERAL TOLERANCES (UNLESS SPECIFIED)		SCALE NTS	DESIGN UNITS METRIC	THIRD ANGLE PROJECTION	REVISE ON CAD ONLY		
			mm	INCH	DIMENSION STYLE MM ONLY		TITLE 2MM DUAL ROW, DUAL WAFER VERTICAL THROUGH HOLE HEADER, 4, 6 & 12 CKT		
		4 PLACES	±---	±---	DRAWN BY RSHAN	DATE 2003/09/05			
		3 PLACES	±---	±---	CHECKED BY KCLING	DATE 2003/09/19			
		ANGULAR ± 1°	DRAFT WHERE APPLICABLE MUST REMAIN WITHIN DIMENSIONS		APPROVED BY SKTOH	DATE 2003/09/22	MATERIAL NO. SEE TABLE	DOCUMENT NO. SD-87761-018	SHEET NO. 1 OF 1
THIS DRAWING CONTAINS INFORMATION THAT IS PROPRIETARY TO MOLEX INCORPORATED AND SHOULD NOT BE USED WITHOUT WRITTEN PERMISSION									