

Excellent Integrated System Limited

Stocking Distributor

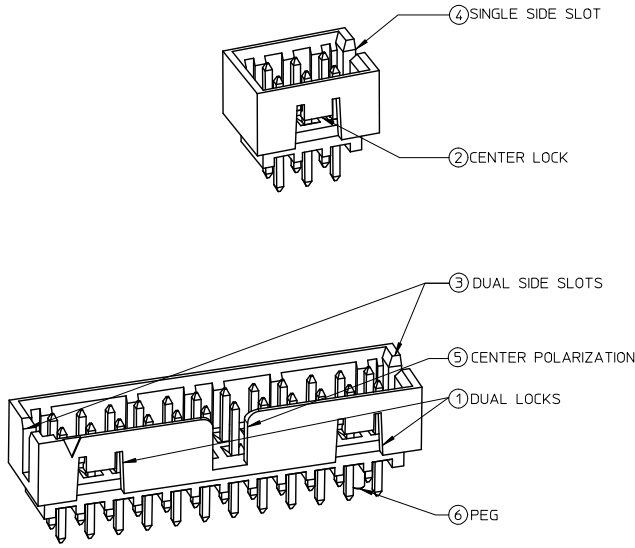
Click to view price, real time Inventory, Delivery & Lifecycle Information:

[Molex Connector Corporation](#)
[0878312435](#)

For any questions, you can email us directly:

sales@integrated-circuit.com

FEATURES SELECTION GUIDE



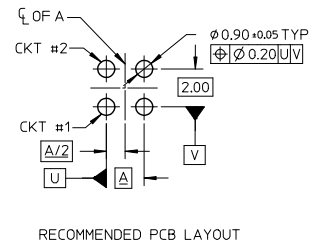
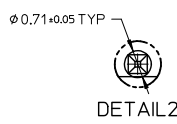
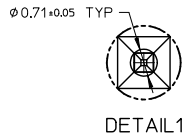
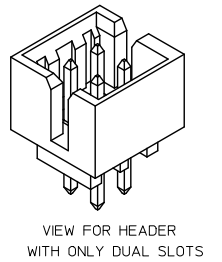
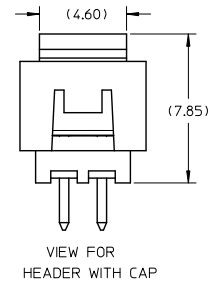
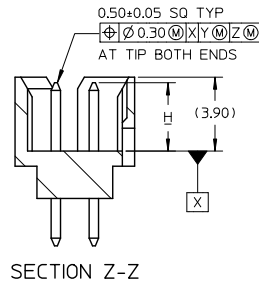
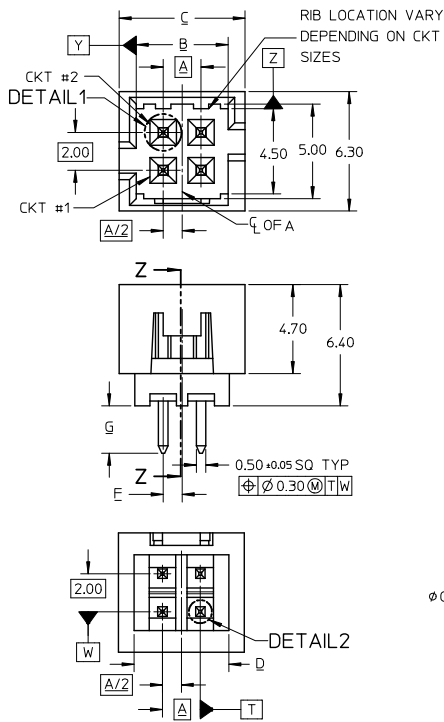
CIRCUIT SIZE	FEATURES						SHEET NO
	FRICTION LOCKS		SIDE SLOTS		⑤ CENTER POLARIZATION	⑥ PEG	
	① DUAL	② CENTER	③ DUAL	④ SINGLE			
4	N.A	N.A	YES	N.A	N.A	N.A	2 - 3
	N.A	YES	YES	N.A	N.A	N.A	
	N.A	YES	N.A	YES	N.A	N.A	
6	N.A	N.A	YES	N.A	N.A	N.A	4 - 5
	N.A	N.A	YES	N.A	N.A	YES	
	N.A	YES	YES	N.A	N.A	N.A	
	N.A	YES	YES	N.A	N.A	YES	
	N.A	YES	N.A	YES	N.A	N.A	
	N.A	YES	N.A	YES	N.A	YES	
8 TO 12	N.A	N.A	YES	N.A	YES	N.A	6 - 8
	N.A	N.A	YES	N.A	YES	YES	
	N.A	YES	YES	N.A	N.A	N.A	
	N.A	YES	YES	N.A	N.A	YES	
	N.A	YES	N.A	YES	N.A	N.A	
	N.A	YES	N.A	YES	N.A	YES	
14 TO 50	YES	N.A	YES	N.A	YES	N.A	9 - 13
	YES	N.A	YES	N.A	YES	YES	

PACKAGING SPECIFICATION TABLE

TAPE AND REEL PACKAGING	PK-87831-300
TUBE STANDARD PACKAGING	PK-87831-001
TUBE NON-STANDARD PACKAGING FOR:	PK-87831-002
87831-0419 87831-0645	
87831-5141 87831-0632	
87831-0443 87831-5119	
87831-5241 87831-1011	
87831-5242 87831-1420	
87831-0643	

ADD PK TABLE EC NO: S2017-0022 DRAWN BY: 2016/07/04 CHECKED BY: 2016/07/27 APPR: KHLIM 2016/07/28 REV: A5	QUALITY SYMBOLS	GENERAL TOLERANCES (UNLESS SPECIFIED)	DIMENSION STYLE	SCALE	DESIGN UNITS	THIRD ANGLE PROJECTION
	$\nabla=0$ $\nabla=0$ $\nabla=0$	mm INCH	MM ONLY	NTS	METRIC	
	4 PLACES ± --- ± --- 3 PLACES ± --- ± --- 2 PLACES ± 0.20 ± --- 1 PLACE ± --- ± --- 0 PLACE ± --- ± ---	DRAWN BY: GMENARLY 2015/04/15 CHECKED BY: CGOH 2015/06/29 APPROVED BY: KHLIM 2015/06/29	TITLE	MILLIGRID 2MM PITCH, THROUGH HOLE VERTICAL SHROUDED HEADER		
	ANGULAR ± 3°	MATERIAL NO.	DOCUMENT NO.			
	DRAFT WHERE APPLICABLE MUST REMAIN WITHIN DIMENSIONS	SEE TABLE	SD-87831-0001	SHEET NO. 1 OF 13		

4 CIRCUITS



NOTES:

- MATERIALS:
HOUSING: 30% GF, NYLON, UL94V-0, COLOR: BLACK
PIN: 0.50MM SQ PHOSPHOR BRONZE
- FINISHES: REFER TO PLATING OPTIONS
- PRODUCT SPECIFICATION: PS-87831-027
- PACKAGING SPECIFICATION: SEE PACKAGING SPECS TABLE ON SHEET 1
- MATES WITH: A. MOLEX CRIMP RECEPTACLE HOUSING: 51110 SERIES AND CRIMP TERMINAL: 50394 SERIES
B. MOLEX 2MM MILLIGRID DUAL ROW IDT: 87568 SERIES
C. MOLEX 2MM MILLIGRID DUAL ROW RECEPTACLE: 79107 (GOLD PLATED), 78787 (TIN PLATED)

EDIT NOTE 4 EC NO: S2017-0022 DRAWN: MENARLY 2016/07/04 CHKD: SCHEDONG 2016/07/27 APPR: KHLIM 2016/07/28 REV A5	QUALITY SYMBOLS	GENERAL TOLERANCES (UNLESS SPECIFIED)	DIMENSION STYLE	SCALE	DESIGN UNITS	THIRD ANGLE PROJECTION
	$\nabla=0$ $\nabla=0$ $\nabla=0$	4 PLACES ± --- ± --- 3 PLACES ± --- ± --- 2 PLACES ± 0.20 ± --- 1 PLACE ± --- ± --- 0 PLACE ± --- ± ---	MM ONLY	NTS	METRIC	
		ANGULAR ± 3°	DRAWN BY	DATE	TITLE	
		DRAFT WHERE APPLICABLE MUST REMAIN WITHIN DIMENSIONS	GMENARLY	2015/04/15	MILLIGRID 2MM PITCH, THROUGH HOLE VERTICAL SHROUDED HEADER	
			CHECKED BY	DATE		
			CGOH	2015/06/29		
			APPROVED BY	DATE		
			KHLIM	2015/06/29		
			MATERIAL NO.	DOCUMENT NO.		
			SEE TABLE	SD-87831-0001		
			SIZE	THIS DRAWING CONTAINS INFORMATION THAT IS PROPRIETARY TO MOLEX INCORPORATED AND SHOULD NOT BE USED WITHOUT WRITTEN PERMISSION		
			A3			



10 9 8 7 6 5 4 3 2 1

4 CIRCUITS

CKT SIZE	ASSY P/N WITHOUT CAP IN TUBE	ASSY P/N WITH CAP IN TUBE	ASSY P/N WITH CAP IN T&R	PLATING OPTIONS	FRICTION LOCKS		SIDE SLOTS		CENTER POLARIZATION	PEG	DIMENSION							
					DUAL	CENTER	DUAL	SINGLE			A	B	C	D	E	F	G	H
E 4	87831-0419	N.A	N.A	1	N.A	N.A	YES	N.A	N.A	N.A	2.00	4.85	6.65	5.00	N.A	N.A	2.50	3.60±0.20
	87831-0420	N.A	N.A	2														
	87831-0421	N.A	N.A	3														
	87831-0436	N.A	N.A	4														
	87831-0441	87831-0456	N.A	2														
	87831-0442	N.A	N.A	3														
	87831-5141	N.A	N.A	2														
	87831-5142	N.A	N.A	3														
	87831-6141	N.A	N.A	2														
	87831-6142	N.A	N.A	3														
87831-0443	N.A	N.A	2	N.A	YES	N.A	YES	N.A	N.A	2.00	4.85	6.65	5.00	N.A	1.00	2.80	3.60 ^{+0.15} _{-0.30}	
87831-0444	N.A	N.A	3															

D
C
B

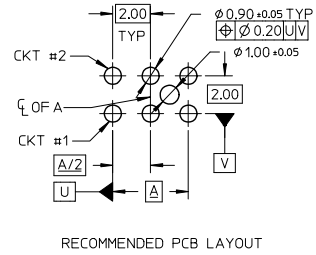
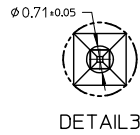
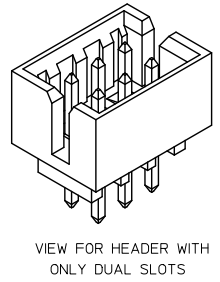
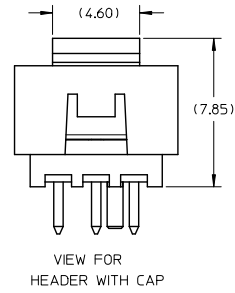
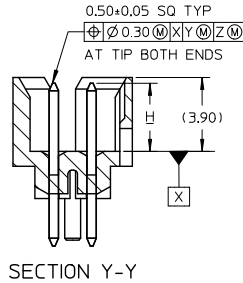
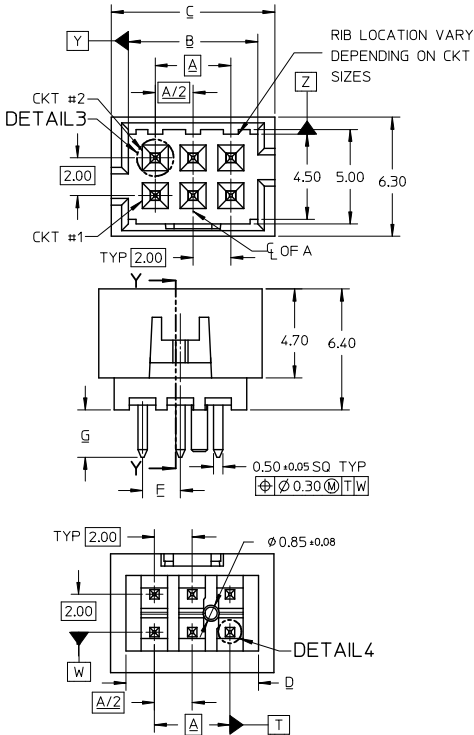
PLATING OPTIONS:

- 1 - 0.05-0.13um/2-5uin GOLD IN CONTACT AREA AND 1.88um/75uin MIN. MATTE TIN IN SOLDER TAIL AREA OVER 1.27um/50uin MIN. NICKEL OVERALL.
- 2 - 0.38um/15uin GOLD IN CONTACT AREA AND 1.88um/75uin MIN. MATTE TIN IN SOLDER TAIL AREA OVER 1.27um/50uin MIN. NICKEL OVERALL.
- 3 - 0.76um/30uin GOLD IN CONTACT AREA AND 1.88um/75uin MIN. MATTETIN IN SOLDER TAIL AREA OVER 1.27um/50uin MIN. NICKEL OVERALL.
- 4 - 2.50um/100uin MIN. MATTE TIN OVER 1.25um/50uin MIN. NICKEL OVERALL.

<p>SEE SHEET 1,2,4,6,8-10</p> <p>EC NO: S2017-0022</p> <p>DRAWN BY: 2016/07/04</p> <p>CHKD: SCHEONG 2016/07/27</p> <p>APPR: KHLIM 2016/07/28</p> <p>REV: A5</p>	<p>QUALITY SYMBOLS</p> <p>√=0</p> <p>√=0</p> <p>√=0</p>	<p>GENERAL TOLERANCES (UNLESS SPECIFIED)</p> <table border="1"> <tr> <th></th> <th>mm</th> <th>INCH</th> </tr> <tr> <td>4 PLACES</td> <td>± ---</td> <td>± ---</td> </tr> <tr> <td>3 PLACES</td> <td>± ---</td> <td>± ---</td> </tr> <tr> <td>2 PLACES</td> <td>± 0.20</td> <td>± ---</td> </tr> <tr> <td>1 PLACE</td> <td>± ---</td> <td>± ---</td> </tr> <tr> <td>0 PLACE</td> <td>± ---</td> <td>± ---</td> </tr> </table> <p>ANGULAR ± 3°</p> <p>DRAFT WHERE APPLICABLE MUST REMAIN WITHIN DIMENSIONS</p>		mm	INCH	4 PLACES	± ---	± ---	3 PLACES	± ---	± ---	2 PLACES	± 0.20	± ---	1 PLACE	± ---	± ---	0 PLACE	± ---	± ---	<p>DIMENSION STYLE</p> <p>MM ONLY</p> <p>DRAWN BY: GMENARLY DATE: 2015/04/15</p> <p>CHECKED BY: CGOH DATE: 2015/06/29</p> <p>APPROVED BY: KHLIM DATE: 2015/06/29</p> <p>MATERIAL NO. SEE TABLE</p> <p>SIZE: A3</p>	<p>SCALE: NTS</p> <p>DESIGN UNITS: METRIC</p> <p>THIRD ANGLE PROJECTION</p> <p>TITLE: MILLIGRID 2MM PITCH, THROUGH HOLE VERTICAL SHROUDED HEADER</p> <p>molex</p> <p>DOCUMENT NO. SD-87831-0001</p> <p>SHEET NO. 3 OF 13</p>
		mm	INCH																			
	4 PLACES	± ---	± ---																			
	3 PLACES	± ---	± ---																			
2 PLACES	± 0.20	± ---																				
1 PLACE	± ---	± ---																				
0 PLACE	± ---	± ---																				
<p>THIS DRAWING CONTAINS INFORMATION THAT IS PROPRIETARY TO MOLEX INCORPORATED AND SHOULD NOT BE USED WITHOUT WRITTEN PERMISSION</p>																						

1b_frame_A3_P_AM_T Rev. G 2012/01/11 9 8 7 6 5 4 3 2 1

6 CIRCUITS



- NOTES:
- MATERIALS:
HOUSING: 30% GF, NYLON, UL94V-0, COLOR: BLACK
PIN: 0.50MM SQ PHOSPHOR BRONZE
 - FINISHES: REFER TO PLATING OPTIONS
 - PRODUCT SPECIFICATION: PS-87831-027
 - PACKAGING SPECIFICATION: SEE PACKAGING SPECS TABLE ON SHEET 1
 - MATES WITH: A. MOLEX CRIMP RECEPTACLE HOUSING: 5110 SERIES AND CRIMP TERMINAL: 50394 SERIES
B. MOLEX 2MM MILLIGRID DUAL ROW IDT: 87568 SERIES
C. MOLEX 2MM MILLIGRID DUAL ROW RECEPTACLE: 79107 (GOLD PLATED), 78787 (TIN PLATED)

EDIT NOTE 4 EC NO: S2017-0022 DRAWN: GMENARLY 2016/07/06 CHECKED: CHEYK-SCHONG 2016/07/27 APPR: KHL IM 2016/07/28	QUALITY SYMBOLS √=0 ∇=0 ∇=0	GENERAL TOLERANCES (UNLESS SPECIFIED)		DIMENSION STYLE MM ONLY		SCALE NTS	DESIGN UNITS METRIC	THIRD ANGLE PROJECTION	
			mm	INCH	DRAWN BY GMENARLY	DATE 2015/04/15	TITLE MILLIGRID 2MM PITCH, THROUGH HOLE VERTICAL SHROUDED HEADER		
		4 PLACES ±---	±---		CHECKED BY CGOH	DATE 2015/06/29	molex DOCUMENT NO. SD-87831-0001 SHEET NO. 4 OF 13		
		3 PLACES ±---	±---		APPROVED BY KHL IM	DATE 2015/06/29			
			ANGULAR ± 3°		MATERIAL NO.				
			DRAFT WHERE APPLICABLE MUST REMAIN WITHIN DIMENSIONS		SEE TABLE				
			SIZE A3		THIS DRAWING CONTAINS INFORMATION THAT IS PROPRIETARY TO MOLEX INCORPORATED AND SHOULD NOT BE USED WITHOUT WRITTEN PERMISSION				



10 9 8 7 6 5 4 3 2 1

6 CIRCUITS

CKT SIZE	ASSY P/N WITHOUT CAP IN TUBE	ASSY P/N WITH CAP IN TUBE	ASSY P/N WITH CAP IN T&R	PLATING OPTIONS	FRICTION LOCKS		SIDE SLOTS		CENTER POLARIZATION	PEG	DIMENSION												
					DUAL	CENTER	DUAL	SINGLE			A	B	C	D	E	F	G	H					
6	87831-0619	N.A	N.A	1	N.A	N.A	YES	N.A	N.A	N.A	4.00	6.85	8.65	7.00	N.A	N.A	2.50	3.60±0.20					
	87831-0620	N.A	N.A	2																			
	87831-0621	N.A	N.A	3																			
	87831-0636	N.A	N.A	4	N.A	N.A	YES	N.A	N.A	YES						N.A	2.50		2.80	2.50	2.50	2.50	3.60 ^{+0.15} _{-0.10}
	87831-0628	N.A	N.A	2																			
	87831-0629	N.A	N.A	3																			
	87831-0641	N.A	N.A	2	N.A	YES	YES	N.A	N.A	N.A						N.A	2.50		2.80	2.50	2.50	2.50	3.60 ^{+0.15} _{-0.10}
	87831-0642	N.A	87831-5552	3																			
	87831-5241	N.A	N.A	2																			
	87831-5242	N.A	N.A	3	N.A	YES	YES	N.A	N.A	N.A						N.A	2.50		2.80	2.50	2.50	2.50	3.60 ^{+0.15} _{-0.10}
	87831-6241	N.A	N.A	2																			
	87831-6242	N.A	N.A	3																			
87831-0643	N.A	N.A	2	N.A	YES	N.A	YES	N.A	N.A	N.A	2.50	2.80	2.50	2.50	2.50	3.60 ^{+0.15} _{-0.10}							
87831-0644	N.A	N.A	3																				
87831-0645	N.A	N.A	2																				
87831-0646	N.A	N.A	3	N.A	YES	YES	N.A	N.A	YES	N.A	2.50	2.80	2.50	2.50	2.50	3.60 ^{+0.15} _{-0.10}							
87831-0632	N.A	N.A	2																				
87831-5119	N.A	N.A	1																				

PLATING OPTIONS:

- 1 - 0.05-0.13um/2-5uin GOLD IN CONTACT AREA AND 1.88um/75uin MIN. MATTE TIN IN SOLDER TAIL AREA OVER 1.27um/50uin MIN. NICKEL OVERALL.
- 2 - 0.38um/15uin GOLD IN CONTACT AREA AND 1.88um/75uin MIN. MATTE TIN IN SOLDER TAIL AREA OVER 1.27um/50uin MIN. NICKEL OVERALL.
- 3 - 0.76um/30uin GOLD IN CONTACT AREA AND 1.88um/75uin MIN. MATTE TIN IN SOLDER TAIL AREA OVER 1.27um/50uin MIN. NICKEL OVERALL.
- 4 - 2.50um/100uin MIN. MATTE TIN OVER 1.25um/50uin MIN. NICKEL OVERALL.

SEE SHEET 1,2,4,6,8-10	EC NO: S2017-0022	2016/07/04
DRWNGENARLY	2016/07/27	
CHKD:SCHEONG	2016/07/28	
APPR:KHLIM		
REV	DESCRIPTION	
A5		

QUALITY SYMBOLS	GENERAL TOLERANCES (UNLESS SPECIFIED)	
	mm	INCH
$\sqrt{\text{A}}=0$	4 PLACES ± --- ± ---	± --- ± ---
$\sqrt{\text{B}}=0$	3 PLACES ± --- ± ---	± --- ± ---
$\sqrt{\text{C}}=0$	2 PLACES ± 0.20 ± ---	± --- ± ---
	1 PLACE ± --- ± ---	± --- ± ---
	0 PLACE ± --- ± ---	± --- ± ---
	ANGULAR ± 3°	

DIMENSION STYLE		SCALE	DESIGN UNITS	THIRD ANGLE PROJECTION
MM ONLY		NTS	METRIC	
DRAWN BY	DATE	TITLE		
GMENARLY	2015/04/15	MILLIGRID		
CHECKED BY	DATE	2MM PITCH, THROUGH HOLE		
CGOH	2015/06/29	VERTICAL SHROUDED HEADER		
APPROVED BY	DATE	molex		
KHLIM	2015/06/29			
MATERIAL NO.	DOCUMENT NO.			
SEE TABLE	SD-87831-0001			

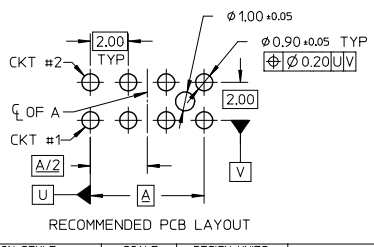
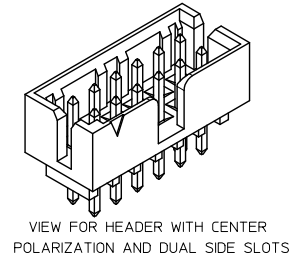
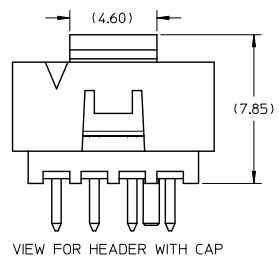
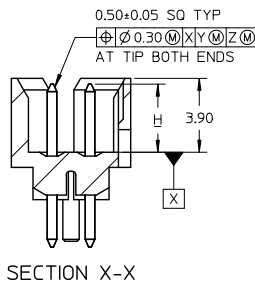
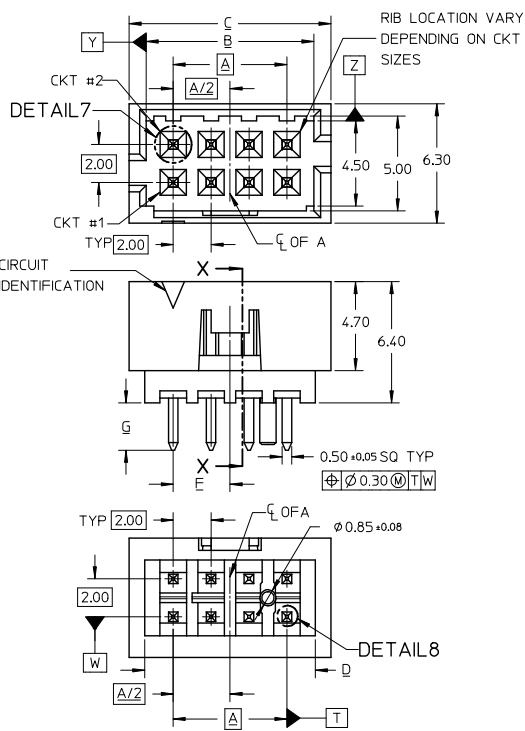
DRAFT WHERE APPLICABLE MUST REMAIN WITHIN DIMENSIONS	SIZE A3	THIS DRAWING CONTAINS INFORMATION THAT IS PROPRIETARY TO MOLEX INCORPORATED AND SHOULD NOT BE USED WITHOUT WRITTEN PERMISSION
--	---------	---

tb_frame_A3_P_AM_T
Rev. G 2012/01/11

9 8 7 6 5 4 3 2 1

10 9 8 7 6 5 4 3 2 1

8 TO 12 CIRCUITS



- NOTES:
- MATERIALS:
HOUSING: 30% GF, NYLON, UL94V-0, COLOR: BLACK
PIN: 0.50MM SQ PHOSPHOR BRONZE
 - FINISHES: REFER TO PLATING OPTIONS
 - PRODUCT SPECIFICATION: PS-87831-027
 - PACKAGING SPECIFICATION: SEE PACKAGING SPECS TABLE ON SHEET 1
 - MATES WITH: A. MOLEX CRIMP RECEPTACLE HOUSING: 51110 SERIES AND CRIMP TERMINAL: 50394 SERIES
B. MOLEX 2MM MILLIGRID DUAL ROW IDT: 87568 SERIES
C. MOLEX 2MM MILLIGRID DUAL ROW RECEPTACLE: 79107 (GOLD PLATED), 78787 (TIN PLATED)

EDIT NOTE 4 EC NO: S2017-0022 DRAWN: MENARLY 2016/07/04 CHKD: SCHEONG 2016/07/27 APPR: KILLIM 2016/07/28 REV A5	QUALITY SYMBOLS	GENERAL TOLERANCES (UNLESS SPECIFIED)	DIMENSION STYLE	SCALE	DESIGN UNITS	THIRD ANGLE PROJECTION
	$\nabla=0$ $\nabla=0$ $\nabla=0$	mm INCH 4 PLACES ± --- ± --- 3 PLACES ± --- ± --- 2 PLACES ± 0.20 ± --- 1 PLACE ± --- ± --- 0 PLACE ± --- ± --- ANGULAR ± 3°	MM ONLY	NTS	METRIC	
	DRAFT WHERE APPLICABLE MUST REMAIN WITHIN DIMENSIONS	DRAWN BY: GMENARLY 2015/04/15 CHECKED BY: CGOH 2015/06/29 APPROVED BY: KHLIM 2015/06/29	TITLE			
		MATERIAL NO. SEE TABLE SIZE A3 THIS DRAWING CONTAINS INFORMATION THAT IS PROPRIETARY TO MOLEX INCORPORATED AND SHOULD NOT BE USED WITHOUT WRITTEN PERMISSION	DOCUMENT NO. SD-87831-0001 SHEET NO. 6 OF 13	MILLIGRID 2MM PITCH, THROUGH HOLE VERTICAL SHROUDED HEADER molex		

9 8 7 6 5 4 3 2 1



10 9 8 7 6 5 4 3 2 1

10 TO 12 CIRCUITS

CKT SIZE	ASSY P/N WITHOUT CAP IN TUBE	ASSY P/N WITH CAP IN TUBE	ASSY P/N WITH CAP IN T&R	PLATING OPTIONS	FRICTION LOCKS				SIDE SLOTS		CENTER POLARIZATION	PEG	DIMENSION							
					DUAL	CENTER	DUAL	SINGLE	A	B			C	D	E	F	G	H		
10	87831-1019	N.A	N.A	1									8.00	10.85	12.65	11.00	N.A	N.A	2.50	3.60±0.20
	87831-1020	N.A	N.A	2																
	87831-1021	N.A	N.A	3	N.A	N.A	YES	N.A	YES	N.A										
	87831-1036	N.A	N.A	4																
	87831-1010	N.A	N.A	2																
	87831-1011	N.A	N.A	3	N.A	N.A	YES	N.A	YES	N.A										
	87831-1028	N.A	N.A	2																
	87831-1029	N.A	87831-5557	3	N.A	N.A	YES	N.A	YES	YES										
	87831-1035	N.A	N.A	3	N.A	N.A	YES	N.A	YES	YES										
	87831-1041	N.A	N.A	2																
	87831-1042	N.A	87831-5553	3	N.A	YES	YES	N.A	N.A	N.A										
	87831-1032	N.A	N.A	2	N.A	YES	YES	N.A	N.A	YES										
87831-1043	N.A	N.A	2																	
87831-1044	N.A	N.A	3	N.A	YES	N.A	YES	N.A	N.A											
87831-1045	N.A	N.A	2																	
87831-1046	N.A	N.A	3	N.A	YES	N.A	YES	N.A	YES											
12	87831-1219	N.A	N.A	1									10.00	12.85	14.65	13.00	N.A	N.A	2.50	3.60±0.20
	87831-1220	N.A	87831-5556	2																
	87831-1221	N.A	N.A	3	N.A	N.A	YES	N.A	YES	N.A										
	87831-1236	N.A	N.A	4																
	87831-1228	N.A	N.A	2																
	87831-1229	N.A	87831-5558	3	N.A	N.A	YES	N.A	YES	YES										
	87831-1241	N.A	N.A	2																
	87831-1242	N.A	N.A	3	N.A	YES	YES	N.A	N.A	N.A										
	87831-1255	87831-1256	N.A	2	N.A	YES	YES	N.A	N.A	N.A										
	87831-1232	N.A	N.A	2	N.A	YES	YES	N.A	N.A	YES										
	87831-1243	N.A	N.A	2																
	87831-1244	N.A	N.A	3	N.A	YES	N.A	YES	N.A	N.A										
87831-1245	N.A	N.A	2																	
87831-1246	N.A	N.A	3	N.A	YES	N.A	YES	N.A	YES											

PLATING OPTIONS:

- 1 - 0.05-0.13um/2-5uin GOLD IN CONTACT AREA AND 1.88um/75uin MIN. MATTE TIN IN SOLDER TAIL AREA OVER 1.27um/50uin MIN. NICKEL OVERALL.
- 2 - 0.38um/15uin GOLD IN CONTACT AREA AND 1.88um/75uin MIN. MATTE TIN IN SOLDER TAIL AREA OVER 1.27um/50uin MIN. NICKEL OVERALL.
- 3 - 0.76um/30uin GOLD IN CONTACT AREA AND 1.88um/75uin MIN. MATTE TIN IN SOLDER TAIL AREA OVER 1.27um/50uin MIN. NICKEL OVERALL.
- 4 - 2.50um/100uin MIN. MATTE TIN OVER 1.25um/50uin MIN. NICKEL OVERALL.

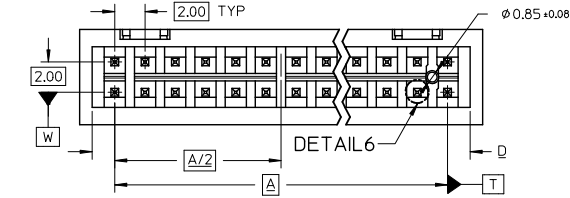
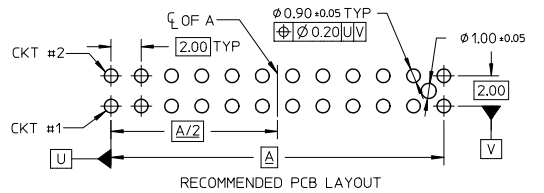
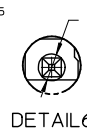
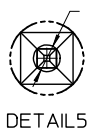
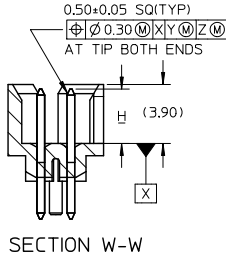
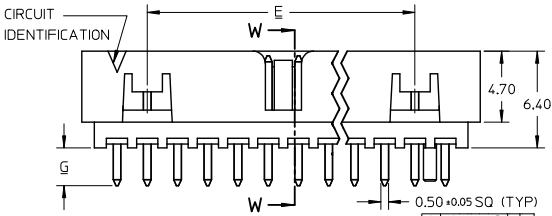
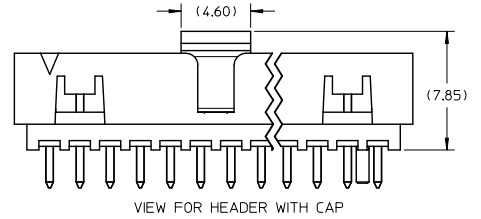
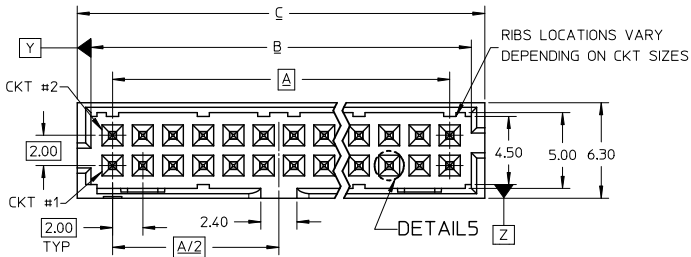
ADD: 87831-5557-5558 EC NO: S2017-0022 DRAWN BY: CHYK-SCHONG CHECKED BY: KHLIM APPR: KHLIM REV: A5	QUALITY SYMBOLS ∇=0 ∇=0 ∇=0	GENERAL TOLERANCES (UNLESS SPECIFIED)		DIMENSION STYLE		SCALE	DESIGN UNITS	THIRD ANGLE PROJECTION		
				MM ONLY		NTS	METRIC			
		4 PLACES ± --- ± ---		DRAWN BY: GMENARLY DATE: 2015/04/15		TITLE: MILLIGRID 2MM PITCH, THROUGH HOLE VERTICAL SHROUDED HEADER				
		3 PLACES ± --- ± ---		CHECKED BY: CGOH DATE: 2015/06/29		MATERIAL NO. SEE TABLE DOCUMENT NO. SD-87831-0001 SHEET NO. 8 OF 13				
2 PLACES ± 0.20 ± ---		APPROVED BY: KHLIM DATE: 2015/06/29		THIS DRAWING CONTAINS INFORMATION THAT IS PROPRIETARY TO MOLEX INCORPORATED AND SHOULD NOT BE USED WITHOUT WRITTEN PERMISSION						
1 PLACE ± --- ± ---		ANGULAR ± 3°								
0 PLACE ± --- ± ---		DRAFT WHERE APPLICABLE MUST REMAIN WITHIN DIMENSIONS								

fb_frame_A3_P_AM_T
Rev. G 2012/01/11

9 8 7 6 5 4 3 2 1

10 9 8 7 6 5 4 3 2 1

14 TO 50 CIRCUITS



NOTES:

- MATERIALS:
HOUSING: 30% GF, NYLON, UL94V-0, COLOR: BLACK
PIN: 0.50MM SQ PHOSPHOR BRONZE
- FINISHES: REFER TO PLATING OPTIONS
- PRODUCT SPECIFICATION: PS-87831-027
- PACKAGING SPECIFICATION: SEE PACKAGING SPECS TABLE ON SHEET 1
- MATES WITH: A. MOLEX CRIMP RECEPTACLE HOUSING: 51110 SERIES AND CRIMP TERMINAL: 50394 SERIES
B. MOLEX 2MM MILLIGRID DUAL ROW IDT: 87568 SERIES
C. MOLEX 2MM MILLIGRID DUAL ROW RECEPTACLE: 79107 (GOLD PLATED), 78787 (TIN PLATED)

EDIT NOTE 4 EC NO: S2017-0022 DRAWN BY: GMENARLY CHKD: SCHEONG APPR: KHLIM 2016/07/27 2016/07/28	QUALITY SYMBOLS	GENERAL TOLERANCES (UNLESS SPECIFIED)		DIMENSION STYLE MM ONLY		SCALE NTS	DESIGN UNITS METRIC	THIRD ANGLE PROJECTION
	▽=0	4 PLACES ±---	±---	DRAWN BY GMENARLY	DATE 2015/04/15	TITLE MILLIGRID 2MM PITCH, THROUGH HOLE VERTICAL SHROUDED HEADER		
	▽=0	3 PLACES ±---	±---	CHECKED BY CGOH	DATE 2015/06/29	molex DOCUMENT NO. SD-87831-0001 SHEET NO. 9 OF 13		
	▽=0	2 PLACES ±0.20	±---	APPROVED BY KHLIM	DATE 2015/06/29			
		1 PLACE ±---	±---	MATERIAL NO. SEE TABLE		THIS DRAWING CONTAINS INFORMATION THAT IS PROPRIETARY TO MOLEX INCORPORATED AND SHOULD NOT BE USED WITHOUT WRITTEN PERMISSION		
		0 PLACE ±---	±---	ANGULAR ± 3°				
		DRAFT WHERE APPLICABLE MUST REMAIN WITHIN DIMENSIONS		SIZE A3				

9 8 7 6 5 4 3 2 1



10 9 8 7 6 5 4 3 2 1

14 TO 20 CIRCUITS

CKT SIZE	ASSY P/N WITHOUT CAP IN TUBE	ASSY P/N WITH CAP IN TUBE	ASSY P/N WITH CAP IN T&R	PLATING OPTIONS	FRICTION LOCKS		SIDE SLOTS		CENTER POLARIZATION	PEG	DIMENSION								
					DUAL	CENTER	DUAL	SINGLE			A	B	C	D	E	F	G	H	
14	87831-1419	N.A	N.A	1							12.00	14.85	16.65	15.00	8.00	N.A	2.50	3.60±0.20	
	87831-1420	87831-1430	87831-5554	2	YES	N.A	YES	N.A	YES	N.A									
	87831-1421	N.A	N.A	3															
	87831-1436	N.A	N.A	4															
	87831-1428	N.A	N.A	2	YES	N.A	YES	N.A	YES	YES									
	87831-1429	N.A	N.A	3	YES	N.A	YES	N.A	YES	YES									
	87831-1435	N.A	N.A	3	YES	N.A	YES	N.A	YES	YES									
	87831-1410	N.A	N.A	2	YES	N.A	YES	N.A	YES	N.A									
87831-1411	N.A	N.A	3							3.50									
16	87831-1619	N.A	N.A	1							14.00	16.85	18.65	17.00	10.00	N.A	2.50	3.60±0.20	
	87831-1620	N.A	N.A	2	YES	N.A	YES	N.A	YES	N.A									
	87831-1621	N.A	N.A	3															
	87831-1636	N.A	N.A	4															
	87831-1628	N.A	N.A	2	YES	N.A	YES	N.A	YES	YES									
	87831-1629	N.A	87831-5559	3	YES	N.A	YES	N.A	YES	YES									
87831-1635	N.A	N.A	3	YES	N.A	YES	N.A	YES	YES	3.50									
18	87831-1819	N.A	N.A	1							16.00	18.85	20.65	19.00	12.00	N.A	2.50	3.60±0.20	
	87831-1820	N.A	N.A	2	YES	N.A	YES	N.A	YES	N.A									
	87831-1821	N.A	N.A	3															
	87831-1836	N.A	N.A	4															
	87831-1828	N.A	N.A	2	YES	N.A	YES	N.A	YES	YES									
	87831-1829	N.A	N.A	3	YES	N.A	YES	N.A	YES	YES									2.50
20	87831-2019	N.A	N.A	1							18.00	20.85	22.65	21.00	14.00	N.A	2.50	3.60±0.20	
	87831-2020	N.A	N.A	2	YES	N.A	YES	N.A	YES	N.A									
	87831-2021	N.A	N.A	3															
	87831-2036	N.A	N.A	4															
	87831-2028	N.A	N.A	2	YES	N.A	YES	N.A	YES	YES									
	87831-2029	N.A	N.A	3	YES	N.A	YES	N.A	YES	YES									
	87831-2035	N.A	N.A	3	YES	N.A	YES	N.A	YES	YES									3.50
	87831-2010	N.A	N.A	2	YES	N.A	YES	N.A	YES	N.A									3.50
87831-2011	N.A	N.A	3							3.50									

PLATING OPTIONS:

- 1 - 0.05-0.13um/2-5uin GOLD IN CONTACT AREA AND 1.88um/75uin MIN. MATTE TIN IN SOLDER TAIL AREA OVER 1.27um/50uin MIN. NICKEL OVERALL.
- 2 - 0.38um/15uin GOLD IN CONTACT AREA AND 1.88um/75uin MIN. MATTE TIN IN SOLDER TAIL AREA OVER 1.27um/50uin MIN. NICKEL OVERALL.
- 3 - 0.76um/30uin GOLD IN CONTACT AREA AND 1.88um/75uin MIN. MATTE TIN IN SOLDER TAIL AREA OVER 1.27um/50uin MIN. NICKEL OVERALL.
- 4 - 2.50um/100uin MIN. MATTE TIN OVER 1.25um/50uin MIN. NICKEL OVERALL.

ADD 87831-5559 EC NO. S2017-0022 DRAWN: MENARLY 2016/07/04 CHKD: SCHEONG 2016/07/27 APPR: KHLIM 2016/07/28 REV A5	QUALITY SYMBOLS ∇=0 ∇=0 ∇=0	GENERAL TOLERANCES (UNLESS SPECIFIED) <table border="1"> <tr> <th></th> <th>mm</th> <th>INCH</th> </tr> <tr> <td>4 PLACES</td> <td>±---</td> <td>±---</td> </tr> <tr> <td>3 PLACES</td> <td>±---</td> <td>±---</td> </tr> <tr> <td>2 PLACES</td> <td>±0.20</td> <td>±---</td> </tr> <tr> <td>1 PLACE</td> <td>±---</td> <td>±---</td> </tr> <tr> <td>0 PLACE</td> <td>±---</td> <td>±---</td> </tr> </table>		mm	INCH	4 PLACES	±---	±---	3 PLACES	±---	±---	2 PLACES	±0.20	±---	1 PLACE	±---	±---	0 PLACE	±---	±---	DIMENSION STYLE MM ONLY DRAWN BY: GMENARLY DATE: 2015/04/15 CHECKED BY: CGOH DATE: 2015/06/29 APPROVED BY: KHLIM DATE: 2015/06/29	SCALE: NTS DESIGN UNITS: METRIC THIRD ANGLE PROJECTION	TITLE: MILLIGRID 2MM PITCH, THROUGH HOLE VERTICAL SHROUDED HEADER molex MATERIAL NO. SEE TABLE DOCUMENT NO. SD-87831-0001 SHEET NO. 10 OF 13
		mm	INCH																				
	4 PLACES	±---	±---																				
	3 PLACES	±---	±---																				
2 PLACES	±0.20	±---																					
1 PLACE	±---	±---																					
0 PLACE	±---	±---																					
DRAFT WHERE APPLICABLE MUST REMAIN WITHIN DIMENSIONS		THIS DRAWING CONTAINS INFORMATION THAT IS PROPRIETARY TO MOLEX INCORPORATED AND SHOULD NOT BE USED WITHOUT WRITTEN PERMISSION																					

9 8 7 6 5 4 3 2 1



10 9 8 7 6 5 4 3 2 1

22 TO 30 CIRCUITS

CKT SIZE	ASSY P/N WITHOUT CAP IN TUBE	ASSY P/N WITH CAP IN TUBE	ASSY P/N WITH CAP IN T&R	PLATING OPTIONS	FRICTION LOCKS		SIDE SLOTS		CENTER POLARIZATION	PEG	DIMENSION								
					DUAL	CENTER	DUAL	SINGLE			A	B	C	D	E	F	G	H	
22	87831-2219	N.A	N.A	1	YES	N.A	YES	N.A	YES	N.A	20.00	22.85	24.65	23.00	16.00	N.A	2.50	3.60±0.20	
	87831-2220	N.A	N.A	2															
	87831-2221	N.A	N.A	3															
	87831-2236	N.A	N.A	4															
	87831-2228	N.A	N.A	2															
22	87831-2229	N.A	N.A	3	YES	N.A	YES	N.A	YES	YES							2.50		
	87831-2419	N.A	N.A	1	YES	N.A	YES	N.A	YES	N.A	22.00	24.85	26.65	25.00	18.00	N.A	2.50	3.60±0.20	
24	87831-2420	N.A	N.A	2															
	87831-2421	N.A	N.A	3															
	87831-2436	N.A	N.A	4															
	87831-2428	N.A	N.A	2															
24	87831-2429	N.A	N.A	3	YES	N.A	YES	N.A	YES	YES							2.50		
	87831-2435	N.A	N.A	3	YES	N.A	YES	N.A	YES	YES							3.50		
	87831-2410	N.A	N.A	2	YES	N.A	YES	N.A	YES	N.A							3.50		
	26	87831-2619	N.A	N.A	1	YES	N.A	YES	N.A	YES	N.A	24.00	26.85	28.65	27.00	20.00	N.A	2.50	3.60±0.20
		87831-2620	87831-2630	87831-5555	2														
87831-2621		N.A	N.A	3															
87831-2636		N.A	N.A	4															
87831-2628		N.A	N.A	2															
26	87831-2629	N.A	N.A	3	YES	N.A	YES	N.A	YES	YES							2.50		
	87831-2610	N.A	N.A	2	YES	N.A	YES	N.A	YES	N.A							3.50		
	28	87831-2819	N.A	N.A	1	YES	N.A	YES	N.A	YES	N.A	26.00	28.85	30.65	29.00	22.00	N.A	2.50	3.60±0.20
		87831-2820	N.A	N.A	2														
		87831-2821	N.A	N.A	3														
87831-2836		N.A	N.A	4															
87831-2828		N.A	N.A	2															
28	87831-2829	N.A	N.A	3	YES	N.A	YES	N.A	YES	YES							2.50		
	30	87831-3019	N.A	N.A	1	YES	N.A	YES	N.A	YES	N.A	28.00	30.85	32.65	31.00	24.00	N.A	2.50	3.60±0.20
		87831-3020	N.A	N.A	2														
		87831-3021	N.A	N.A	3														
		87831-3036	N.A	N.A	4														
87831-3028		N.A	N.A	2															
30	87831-3029	N.A	N.A	3	YES	N.A	YES	N.A	YES	YES							2.50		
	87831-3035	N.A	N.A	3	YES	N.A	YES	N.A	YES	YES							3.50		
	87831-3010	87831-3030	87831-3050	2	YES	N.A	YES	N.A	YES	N.A							3.50		

- PLATING OPTIONS:
- 0.05-0.13um/2-5uin GOLD IN CONTACT AREA AND 1.88um/75uin MIN. MATTE TIN IN SOLDER TAIL AREA OVER 1.27um/50uin MIN. NICKEL OVERALL.
 - 0.38um/15uin GOLD IN CONTACT AREA AND 1.88um/75uin MIN. MATTE TIN IN SOLDER TAIL AREA OVER 1.27um/50uin MIN. NICKEL OVERALL.
 - 0.76um/30uin GOLD IN CONTACT AREA AND 1.88um/75uin MIN. MATTE TIN IN SOLDER TAIL AREA OVER 1.27um/50uin MIN. NICKEL OVERALL.
 - 2.50um/100uin MIN. MATTE TIN OVER 1.25um/50uin MIN. NICKEL OVERALL.

SEE SHEET 1.2.4.6.8-10
 EC NO: S2017-0022
 DRAWN BY: CHYK-SCHONG
 CHECKED BY: KHLIM
 DATE: 2016/07/27
 DATE: 2016/07/28
 APPR: KHLIM

QUALITY SYMBOLS
 √=0
 √=0
 √=0

	GENERAL TOLERANCES (UNLESS SPECIFIED)	
	mm	INCH
4 PLACES	±---	±---
3 PLACES	±---	±---
2 PLACES	±0.20	±---
1 PLACE	±---	±---
0 PLACE	±---	±---

ANGULAR ± 3°
 DRAFT WHERE APPLICABLE MUST REMAIN WITHIN DIMENSIONS

DIMENSION STYLE		SCALE	DESIGN UNITS	THIRD ANGLE PROJECTION
MM ONLY		NTS	METRIC	☉
DRAWN BY	DATE	MILLIGRID	2MM PITCH, THROUGH HOLE	VERTICAL SHROUDED HEADER
GEMENARLY	2015/04/15			
CHECKED BY	DATE			
CGOH	2015/06/29	molex		
APPROVED BY	DATE			
KHLIM	2015/06/29	MATERIAL NO.	DOCUMENT NO.	SHEET NO.
		SEE TABLE	SD-87831-0001	11 OF 13

THIS DRAWING CONTAINS INFORMATION THAT IS PROPRIETARY TO MOLEX INCORPORATED AND SHOULD NOT BE USED WITHOUT WRITTEN PERMISSION

ib_frame_A3_P_AM_T Rev. G 2012/01/11

10 9 8 7 6 5 4 3 2 1

32 TO 40 CIRCUITS

F	CKT SIZE	ASSY P/N WITHOUT CAP IN TUBE	ASSY P/N WITH CAP IN TUBE	ASSY P/N WITH CAP IN T&R	PLATING OPTIONS	FRICTION LOCKS		SIDE SLOTS		CENTER POLARIZATION	PEG	DIMENSION							
						DUAL	CENTER	DUAL	SINGLE			A	B	C	D	E	F	G	H
32	87831-3219	N.A	N.A	1	YES	N.A	YES	N.A	YES	N.A	30.00	32.85	34.65	33.00	26.00	N.A	2.50	3.60±0.20	
	87831-3220	N.A	N.A	2															
	87831-3221	N.A	N.A	3															
	87831-3236	N.A	N.A	4															
	87831-3228	N.A	N.A	2															
34	87831-3419	N.A	N.A	1	YES	N.A	YES	N.A	YES	N.A	32.00	34.85	36.65	35.00	28.00	N.A	2.50	3.60±0.20	
	87831-3420	N.A	N.A	2															
	87831-3421	N.A	N.A	3															
	87831-3436	N.A	N.A	4															
	87831-3428	N.A	N.A	2															
36	87831-3619	N.A	N.A	1	YES	N.A	YES	N.A	YES	N.A	34.00	36.85	38.65	37.00	30.00	N.A	2.50	3.60±0.20	
	87831-3620	N.A	N.A	2															
	87831-3621	N.A	N.A	3															
	87831-3636	N.A	N.A	4															
	87831-3628	N.A	N.A	2															
38	87831-3819	N.A	N.A	1	YES	N.A	YES	N.A	YES	N.A	36.00	38.85	40.65	39.00	32.00	N.A	2.50	3.60±0.20	
	87831-3820	N.A	N.A	2															
	87831-3821	N.A	N.A	3															
	87831-3836	N.A	N.A	4															
	87831-3828	N.A	N.A	2															
40	87831-4019	N.A	N.A	1	YES	N.A	YES	N.A	YES	N.A	38.00	40.85	42.65	41.00	34.00	N.A	2.50	3.60±0.20	
	87831-4020	N.A	N.A	2															
	87831-4021	N.A	N.A	3															
	87831-4036	N.A	N.A	4															
	87831-4028	N.A	N.A	2															

PLATING OPTIONS:

- 1 - 0.05-0.13um/2-5uin GOLD IN CONTACT AREA AND 1.88um/75uin MIN. MATTE TIN IN SOLDER TAIL AREA OVER 1.27um/50uin MIN. NICKEL OVERALL.
- 2 - 0.38um/15uin GOLD IN CONTACT AREA AND 1.88um/75uin MIN. MATTE TIN IN SOLDER TAIL AREA OVER 1.27um/50uin MIN. NICKEL OVERALL.
- 3 - 0.76um/30uin GOLD IN CONTACT AREA AND 1.88um/75uin MIN. MATTE TIN IN SOLDER TAIL AREA OVER 1.27um/50uin MIN. NICKEL OVERALL.
- 4 - 2.50um/100uin MIN. MATTE TIN OVER 1.25um/50uin MIN. NICKEL OVERALL.

SEE SHEET 12.4.6.8-10	2016/07/28
EC NO: S2017-0022	2016/07/27
DRAWN:HEARLY	2016/07/27
CHKD:SCHEONG	2016/07/28
APPR:KHLIM	
REV	DESCRIPTION
A5	

QUALITY SYMBOLS	GENERAL TOLERANCES (UNLESS SPECIFIED)	
	mm	INCH
$\sqrt{\text{R}}=0$	4 PLACES ± --- ± ---	± ---
$\sqrt{\text{E}}=0$	3 PLACES ± --- ± ---	± ---
$\sqrt{\text{D}}=0$	2 PLACES ± 0.20 ± ---	± ---
	1 PLACE ± --- ± ---	± ---
	0 PLACE ± --- ± ---	± ---
	ANGULAR ± 3°	

DIMENSION STYLE		SCALE	DESIGN UNITS	THIRD ANGLE PROJECTION
MM ONLY		NTS	METRIC	
DRAWN BY	DATE	TITLE		
GMENARLY	2015/04/15	MILLIGRID		
CHECKED BY	DATE	2MM PITCH, THROUGH HOLE		
CGOH	2015/06/29	VERTICAL SHROUDED HEADER		
APPROVED BY	DATE			
KHLIM	2015/06/29			

MATERIAL NO.	DOCUMENT NO.	SHEET NO.
SEE TABLE	SD-87831-0001	12 OF 13
THIS DRAWING CONTAINS INFORMATION THAT IS PROPRIETARY TO MOLEX INCORPORATED AND SHOULD NOT BE USED WITHOUT WRITTEN PERMISSION		

9 8 7 6 5 4 3 2 1



10 9 8 7 6 5 4 3 2 1

42 TO 50 CIRCUITS

CKT SIZE	ASSY P/N WITHOUT CAP IN TUBE	ASSY P/N WITH CAP IN TUBE	ASSY P/N WITH CAP IN T&R	PLATING OPTIONS	FRICTION LOCKS				SIDE SLOTS		CENTER POLARIZATION	PEG	DIMENSION										
					DUAL	CENTER	DUAL	SINGLE	A	B			C	D	E	F	G	H					
42	87831-4219	N.A	N.A	1									40.00	42.85	44.65	43.00	36.00	N.A	2.50	3.60±0.20			
	87831-4220	N.A	N.A	2	YES	N.A	YES	N.A	YES	N.A													
	87831-4221	N.A	N.A	3																			
	87831-4236	N.A	N.A	4																			
	87831-4228	N.A	N.A	2	YES	N.A	YES	N.A	YES	YES											2.50		
87831-4229	N.A	N.A	3																				
44	87831-4419	N.A	N.A	1									42.00	44.85	46.65	45.00	38.00	N.A	2.50	3.60±0.20			
	87831-4420	N.A	N.A	2	YES	N.A	YES	N.A	YES	N.A													
	87831-4421	N.A	N.A	3																			
	87831-4436	N.A	N.A	4																			
	87831-4428	N.A	N.A	2	YES	N.A	YES	N.A	YES	YES											2.50		
87831-4429	N.A	N.A	3																				
87831-4435	N.A	N.A	3	YES	N.A	YES	N.A	YES	YES												3.50		
46	87831-4619	N.A	N.A	1									44.00	46.85	48.65	47.00	40.00	N.A	2.50	3.60±0.20			
	87831-4620	N.A	N.A	2	YES	N.A	YES	N.A	YES	N.A													
	87831-4621	N.A	N.A	3																			
	87831-4636	N.A	N.A	4																			
	87831-4628	N.A	N.A	2	YES	N.A	YES	N.A	YES	YES											2.50		
87831-4629	N.A	N.A	3																		2.50		
48	87831-4819	N.A	N.A	1									46.00	48.85	50.65	49.00	42.00	N.A	2.50	3.60±0.20			
	87831-4820	N.A	N.A	2	YES	N.A	YES	N.A	YES	N.A													
	87831-4821	N.A	N.A	3																			
	87831-4836	N.A	N.A	4																			
	87831-4828	N.A	N.A	2	YES	N.A	YES	N.A	YES	YES											2.50		
87831-4829	N.A	N.A	3																		2.50		
50	87831-5019	N.A	N.A	1									48.00	50.85	52.65	51.00	44.00	N.A	2.50	3.60±0.20			
	87831-5020	N.A	N.A	2	YES	N.A	YES	N.A	YES	N.A													
	87831-5021	N.A	N.A	3																			
	87831-5036	N.A	N.A	4																			
	87831-5028	N.A	N.A	2	YES	N.A	YES	N.A	YES	YES											2.50		
87831-5029	N.A	N.A	3																		2.50		
87831-5035	N.A	N.A	3	YES	N.A	YES	N.A	YES	YES													3.50	

PLATING OPTIONS:

- 1 - 0.05-0.13um/2-5uin GOLD IN CONTACT AREA AND 1.88um/75uin MIN. MATTE TIN IN SOLDER TAIL AREA OVER 1.27um/50uin MIN. NICKEL OVERALL.
- 2 - 0.38um/15uin GOLD IN CONTACT AREA AND 1.88um/75uin MIN. MATTE TIN IN SOLDER TAIL AREA OVER 1.27um/50uin MIN. NICKEL OVERALL.
- 3 - 0.76um/30uin GOLD IN CONTACT AREA AND 1.88um/75uin MIN. MATTE TIN IN SOLDER TAIL AREA OVER 1.27um/50uin MIN. NICKEL OVERALL.
- 4 - 2.50um/100uin MIN. MATTE TIN OVER 1.25um/50uin MIN. NICKEL OVERALL.

SEE SHEET 1.2.4.6.8-10 IEC NO. S2017-0022 DRAWN BY: GMENARLY 2016/07/16 CHECKED BY: CHYK-SCHEONG 2016/07/27 APPR: KHL IM 2016/07/28	QUALITY SYMBOLS √=0 √=0 √=0	GENERAL TOLERANCES (UNLESS SPECIFIED)		DIMENSION STYLE		SCALE	DESIGN UNITS	THIRD ANGLE PROJECTION
				MM ONLY		NTS	METRIC	
		4 PLACES ± --- ± ---		DRAWN BY	DATE	TITLE		
		3 PLACES ± --- ± ---		GMENARLY	2015/04/15	MILLIGRID		
2 PLACES ± 0.20 ± ---		CHECKED BY	DATE	2MM PITCH, THROUGH HOLE				
1 PLACE ± --- ± ---		CGOH	2015/06/29	VERTICAL SHROUDED HEADER				
0 PLACE ± --- ± ---		APPROVED BY	DATE	molex				
ANGULAR ± 3°		KHL IM	2015/06/29	DOCUMENT NO.				
DRAFT WHERE APPLICABLE		MATERIAL NO.		SD-87831-0001				
MUST REMAIN WITHIN DIMENSIONS		SEE TABLE		SHEET NO.				
		SIZE A3		13 OF 13				
		THIS DRAWING CONTAINS INFORMATION THAT IS PROPRIETARY TO MOLEX INCORPORATED AND SHOULD NOT BE USED WITHOUT WRITTEN PERMISSION						

tb_frame_A3_P_AM_T Rev. G 2012/01/11 9 8 7 6 5 4 3 2 1