



## Excellent Integrated System Limited

Stocking Distributor

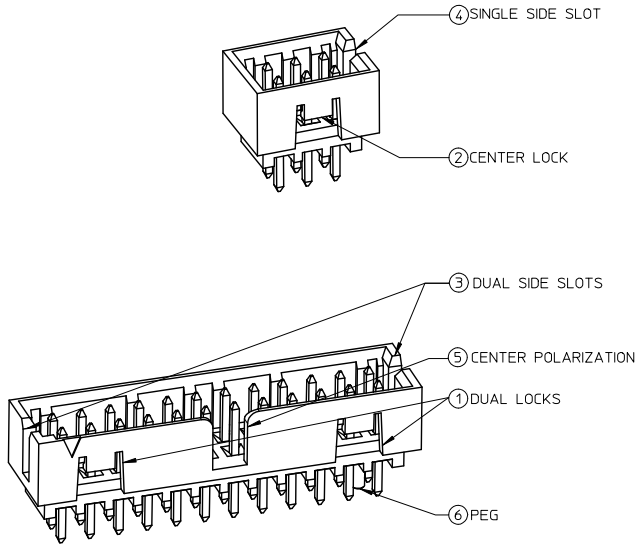
Click to view price, real time Inventory, Delivery & Lifecycle Information:

[Molex Connector Corporation](#)  
[0878312619](#)

For any questions, you can email us directly:

[sales@integrated-circuit.com](mailto:sales@integrated-circuit.com)

FEATURES SELECTION GUIDE



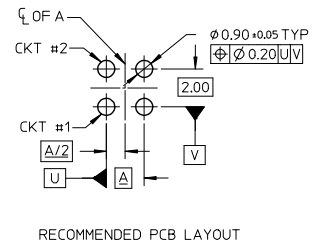
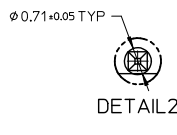
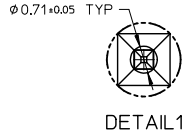
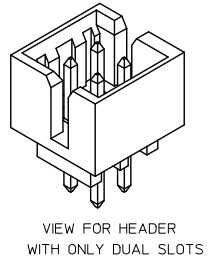
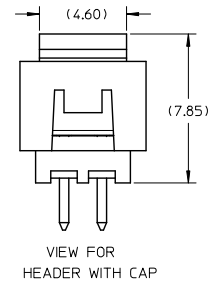
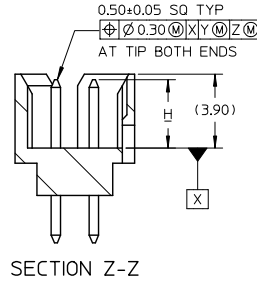
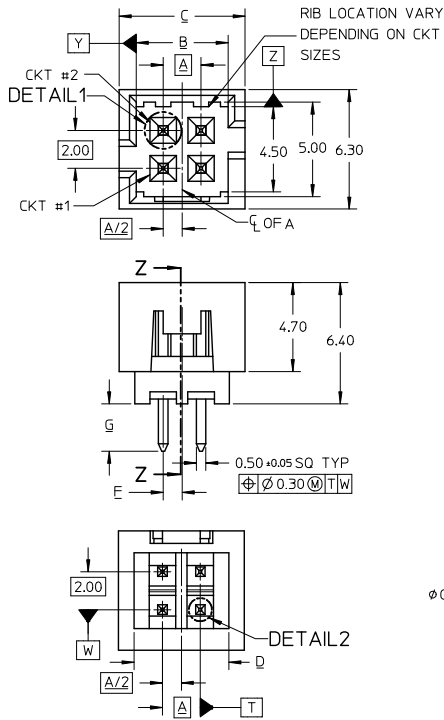
CIRCUIT SIZE	FEATURES						SHEET NO
	FRICTION LOCKS		SIDE SLOTS		⑤ CENTER POLARIZATION	⑥ PEG	
	① DUAL	② CENTER	③ DUAL	④ SINGLE			
4	N.A	N.A	YES	N.A	N.A	N.A	2 - 3
	N.A	YES	YES	N.A	N.A	N.A	
	N.A	YES	N.A	YES	N.A	N.A	
6	N.A	N.A	YES	N.A	N.A	N.A	4 - 5
	N.A	N.A	YES	N.A	N.A	YES	
	N.A	YES	YES	N.A	N.A	N.A	
	N.A	YES	YES	N.A	N.A	YES	
	N.A	YES	N.A	YES	N.A	N.A	
	N.A	YES	N.A	YES	N.A	YES	
8 TO 12	N.A	N.A	YES	N.A	YES	N.A	6 - 8
	N.A	N.A	YES	N.A	YES	YES	
	N.A	YES	YES	N.A	N.A	N.A	
	N.A	YES	YES	N.A	N.A	YES	
	N.A	YES	N.A	YES	N.A	N.A	
	N.A	YES	N.A	YES	N.A	YES	
14 TO 50	YES	N.A	YES	N.A	YES	N.A	9 - 13
	YES	N.A	YES	N.A	YES	YES	

PACKAGING SPECIFICATION TABLE

TAPE AND REEL PACKAGING	PK-87831-300
TUBE STANDARD PACKAGING	PK-87831-001
TUBE NON-STANDARD PACKAGING FOR:	PK-87831-002
87831-0419    87831-0645	
87831-5141    87831-0632	
87831-0443    87831-5119	
87831-5241    87831-1011	
87831-5242    87831-1420	
87831-0643	

ADD PK TABLE EC NO: S2017-0022 DRAWN BY: 2016/07/04 CHECKED BY: 2016/07/27 APPR: KHLIM 2016/07/28 REV: A5	QUALITY SYMBOLS $\nabla=0$ $\nabla=0$ $\nabla=0$	GENERAL TOLERANCES (UNLESS SPECIFIED) <table border="1"> <tr> <th></th> <th>mm</th> <th>INCH</th> </tr> <tr> <td>4 PLACES</td> <td>±---</td> <td>±---</td> </tr> <tr> <td>3 PLACES</td> <td>±---</td> <td>±---</td> </tr> <tr> <td>2 PLACES</td> <td>±0.20</td> <td>±---</td> </tr> <tr> <td>1 PLACE</td> <td>±---</td> <td>±---</td> </tr> <tr> <td>0 PLACE</td> <td>±---</td> <td>±---</td> </tr> </table>		mm	INCH	4 PLACES	±---	±---	3 PLACES	±---	±---	2 PLACES	±0.20	±---	1 PLACE	±---	±---	0 PLACE	±---	±---	DIMENSION STYLE MM ONLY DRAWN BY: GMENARLY DATE: 2015/04/15 CHECKED BY: CGOH DATE: 2015/06/29 APPROVED BY: KHLIM DATE: 2015/06/29	SCALE: NTS DESIGN UNITS: METRIC THIRD ANGLE PROJECTION	TITLE: MILLIGRID 2MM PITCH, THROUGH HOLE VERTICAL SHROUDED HEADER <b>molex</b>	MATERIAL NO.: SEE TABLE DOCUMENT NO.: SD-87831-0001 SHEET NO.: 1 OF 13
		mm	INCH																					
	4 PLACES	±---	±---																					
	3 PLACES	±---	±---																					
2 PLACES	±0.20	±---																						
1 PLACE	±---	±---																						
0 PLACE	±---	±---																						
DRAFT WHERE APPLICABLE MUST REMAIN WITHIN DIMENSIONS		THIS DRAWING CONTAINS INFORMATION THAT IS PROPRIETARY TO MOLEX INCORPORATED AND SHOULD NOT BE USED WITHOUT WRITTEN PERMISSION																						

4 CIRCUITS



- NOTES:
- MATERIALS:  
HOUSING: 30% GF, NYLON, UL94V-0, COLOR: BLACK  
PIN: 0.50MM SQ PHOSPHOR BRONZE
  - FINISHES: REFER TO PLATING OPTIONS
  - PRODUCT SPECIFICATION: PS-87831-027
  - PACKAGING SPECIFICATION: SEE PACKAGING SPECS TABLE ON SHEET 1
  - MATES WITH: A. MOLEX CRIMP RECEPTACLE HOUSING: 5110 SERIES AND CRIMP TERMINAL: 50394 SERIES  
B. MOLEX 2MM MILLIGRID DUAL ROW IDT: 87568 SERIES  
C. MOLEX 2MM MILLIGRID DUAL ROW RECEPTACLE: 79107 (GOLD PLATED), 78787 (TIN PLATED)

EDIT NOTE 4 EC NO: S2017-0022 DRAWN: MENARLY 2016/07/04 CHKD: SCHEDONG 2016/07/27 APPR: KHLIM 2016/07/28 REV A5	QUALITY SYMBOLS	GENERAL TOLERANCES (UNLESS SPECIFIED)	DIMENSION STYLE	SCALE	DESIGN UNITS	THIRD ANGLE PROJECTION																		
	$\nabla=0$ $\nabla=0$ $\nabla=0$	<table border="1"> <thead> <tr> <th></th> <th>mm</th> <th>INCH</th> </tr> </thead> <tbody> <tr> <td>4 PLACES</td> <td>±---</td> <td>±---</td> </tr> <tr> <td>3 PLACES</td> <td>±---</td> <td>±---</td> </tr> <tr> <td>2 PLACES</td> <td>±0.20</td> <td>±---</td> </tr> <tr> <td>1 PLACE</td> <td>±---</td> <td>±---</td> </tr> <tr> <td>0 PLACE</td> <td>±---</td> <td>±---</td> </tr> </tbody> </table>		mm	INCH	4 PLACES	±---	±---	3 PLACES	±---	±---	2 PLACES	±0.20	±---	1 PLACE	±---	±---	0 PLACE	±---	±---	MM ONLY	NTS	METRIC	<input checked="" type="checkbox"/> THIRD ANGLE <input type="checkbox"/> FIRST ANGLE
		mm	INCH																					
	4 PLACES	±---	±---																					
3 PLACES	±---	±---																						
2 PLACES	±0.20	±---																						
1 PLACE	±---	±---																						
0 PLACE	±---	±---																						
DRAFT WHERE APPLICABLE MUST REMAIN WITHIN DIMENSIONS	<table border="1"> <thead> <tr> <th>DRAWN BY</th> <th>DATE</th> <th>TITLE</th> </tr> </thead> <tbody> <tr> <td>GMENARLY</td> <td>2015/04/15</td> <td rowspan="3">MILLIGRID 2MM PITCH, THROUGH HOLE VERTICAL SHROUDED HEADER</td> </tr> <tr> <td>CHECKED BY</td> <td>DATE</td> </tr> <tr> <td>CGOH</td> <td>2015/06/29</td> </tr> <tr> <td>APPROVED BY</td> <td>DATE</td> <td></td> </tr> <tr> <td>KHLIM</td> <td>2015/06/29</td> <td></td> </tr> </tbody> </table>	DRAWN BY	DATE	TITLE	GMENARLY	2015/04/15	MILLIGRID 2MM PITCH, THROUGH HOLE VERTICAL SHROUDED HEADER	CHECKED BY	DATE	CGOH	2015/06/29	APPROVED BY	DATE		KHLIM	2015/06/29		SEE TABLE			<b>molex</b> DOCUMENT NO. SD-87831-0001			
DRAWN BY	DATE	TITLE																						
GMENARLY	2015/04/15	MILLIGRID 2MM PITCH, THROUGH HOLE VERTICAL SHROUDED HEADER																						
CHECKED BY	DATE																							
CGOH	2015/06/29																							
APPROVED BY	DATE																							
KHLIM	2015/06/29																							
			MATERIAL NO. SIZE A3			SHEET NO. 2 OF 13																		

10 9 8 7 6 5 4 3 2 1

4 CIRCUITS

CKT SIZE	ASSY P/N WITHOUT CAP IN TUBE	ASSY P/N WITH CAP IN TUBE	ASSY P/N WITH CAP IN T&R	PLATING OPTIONS	FRICTION LOCKS		SIDE SLOTS		CENTER POLARIZATION	PEG	DIMENSION							
					DUAL	CENTER	DUAL	SINGLE			A	B	C	D	E	F	G	H
E 4	87831-0419	N.A	N.A	1	N.A	N.A	YES	N.A	N.A	N.A	2.00	4.85	6.65	5.00	N.A	N.A	2.50	3.60 <sup>+0.15</sup> <sub>-0.30</sub>
	87831-0420	N.A	N.A	2														
	87831-0421	N.A	N.A	3														
	87831-0436	N.A	N.A	4	N.A	YES	YES	N.A	N.A	N.A						1.00	2.50	
	87831-0441	87831-0456	N.A	2														
	87831-0442	N.A	N.A	3	N.A	YES	YES	N.A	N.A	N.A						2.80		
	87831-5141	N.A	N.A	2														
	87831-5142	N.A	N.A	3	N.A	YES	N.A	YES	N.A	N.A						2.50		
	87831-6141	N.A	N.A	2														
	87831-6142	N.A	N.A	3	N.A	YES	N.A	YES	N.A	N.A						3.60 <sup>+0.15</sup> <sub>-0.30</sub>		
87831-6143	N.A	N.A	2															
87831-0443	N.A	N.A	2	N.A	YES	N.A	YES	N.A	N.A	2.50								
87831-0444	N.A	N.A	3															

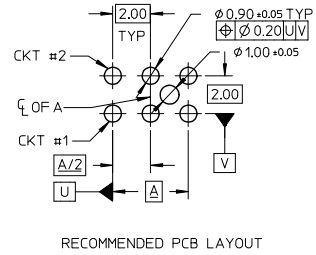
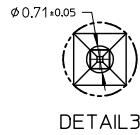
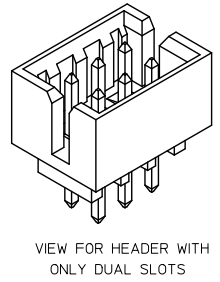
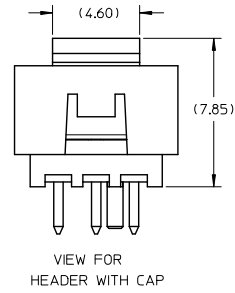
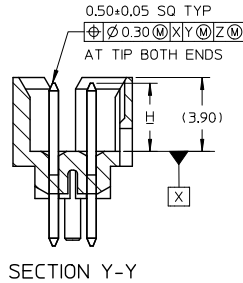
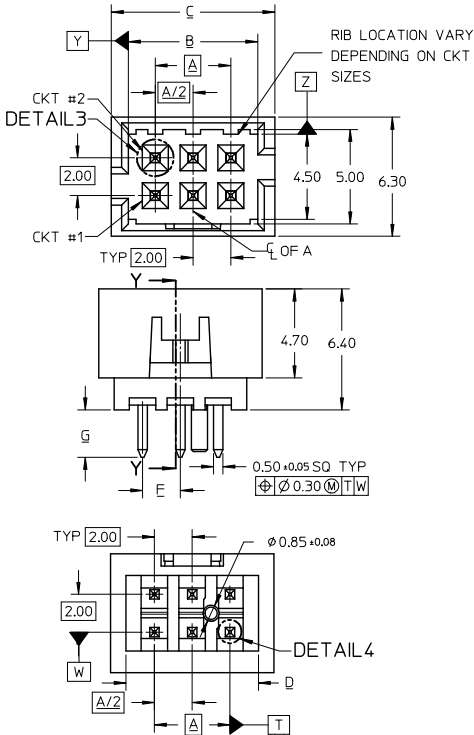
PLATING OPTIONS:

- 1 - 0.05-0.13um/2-5uin GOLD IN CONTACT AREA AND 1.88um/75uin MIN. MATTE TIN IN SOLDER TAIL AREA OVER 1.27um/50uin MIN. NICKEL OVERALL.
- 2 - 0.38um/15uin GOLD IN CONTACT AREA AND 1.88um/75uin MIN. MATTE TIN IN SOLDER TAIL AREA OVER 1.27um/50uin MIN. NICKEL OVERALL.
- 3 - 0.76um/30uin GOLD IN CONTACT AREA AND 1.88um/75uin MIN. MATTETIN IN SOLDER TAIL AREA OVER 1.27um/50uin MIN. NICKEL OVERALL.
- 4 - 2.50um/100uin MIN. MATTE TIN OVER 1.25um/50uin MIN. NICKEL OVERALL.

<p>SEE SHEET 1,2,4,6,8-10</p> <p>EC NO: S2017-0022</p> <p>DRWNGENARLY 2016/07/04</p> <p>CHKD:SCHEONG 2016/07/27</p> <p>APPR:KHLIM 2016/07/28</p> <p>REV A5</p>	<p>QUALITY SYMBOLS</p> <p>√=0</p> <p>√=0</p> <p>√=0</p>	<p>GENERAL TOLERANCES (UNLESS SPECIFIED)</p> <table border="1"> <tr> <th></th> <th>mm</th> <th>INCH</th> </tr> <tr> <td>4 PLACES</td> <td>± ---</td> <td>± ---</td> </tr> <tr> <td>3 PLACES</td> <td>± ---</td> <td>± ---</td> </tr> <tr> <td>2 PLACES</td> <td>± 0.20</td> <td>± ---</td> </tr> <tr> <td>1 PLACE</td> <td>± ---</td> <td>± ---</td> </tr> <tr> <td>0 PLACE</td> <td>± ---</td> <td>± ---</td> </tr> </table> <p>ANGULAR ± 3°</p> <p>DRAFT WHERE APPLICABLE MUST REMAIN WITHIN DIMENSIONS</p>		mm	INCH	4 PLACES	± ---	± ---	3 PLACES	± ---	± ---	2 PLACES	± 0.20	± ---	1 PLACE	± ---	± ---	0 PLACE	± ---	± ---	<p>DIMENSION STYLE</p> <p>MM ONLY</p> <p>DRAWN BY DATE</p> <p>GMENARLY 2015/04/15</p> <p>CHECKED BY DATE</p> <p>CGOH 2015/06/29</p> <p>APPROVED BY DATE</p> <p>KHLIM 2015/06/29</p> <p>MATERIAL NO.</p> <p>SEE TABLE</p>	<p>SCALE NTS</p> <p>DESIGN UNITS METRIC</p> <p>THIRD ANGLE PROJECTION</p> <p>TITLE</p> <p>MILLIGRID</p> <p>2MM PITCH, THROUGH HOLE</p> <p>VERTICAL SHROUDED HEADER</p> <p><b>molex</b></p> <p>DOCUMENT NO. SD-87831-0001</p> <p>SHEET NO. 3 OF 13</p>
		mm	INCH																			
	4 PLACES	± ---	± ---																			
	3 PLACES	± ---	± ---																			
2 PLACES	± 0.20	± ---																				
1 PLACE	± ---	± ---																				
0 PLACE	± ---	± ---																				
<p>THIS DRAWING CONTAINS INFORMATION THAT IS PROPRIETARY TO MOLEX INCORPORATED AND SHOULD NOT BE USED WITHOUT WRITTEN PERMISSION</p>																						

1b\_frame\_A3\_P\_AM\_T Rev. G 2012/01/11 9 8 7 6 5 4 3 2 1

6 CIRCUITS



- NOTES:
- MATERIALS:  
HOUSING: 30% GF, NYLON, UL94V-0, COLOR: BLACK  
PIN: 0.50MM SQ PHOSPHOR BRONZE
  - FINISHES: REFER TO PLATING OPTIONS
  - PRODUCT SPECIFICATION: PS-87831-027
  - PACKAGING SPECIFICATION: SEE PACKAGING SPECS TABLE ON SHEET 1
  - MATES WITH: A. MOLEX CRIMP RECEPTACLE HOUSING: 5110 SERIES AND CRIMP TERMINAL: 50394 SERIES  
B. MOLEX 2MM MILLIGRID DUAL ROW IDT: 87568 SERIES  
C. MOLEX 2MM MILLIGRID DUAL ROW RECEPTACLE: 79107 (GOLD PLATED), 78787 (TIN PLATED)

EDIT NOTE 4 EC NO: S2017-0022 DRAWN: GMENARLY 2016/07/06 CHECKED: CHEUNG 2016/07/27 APPR: KHL IM 2016/07/28	QUALITY SYMBOLS √=0 ∇=0 ∇=0	GENERAL TOLERANCES (UNLESS SPECIFIED)		DIMENSION STYLE MM ONLY		SCALE NTS	DESIGN UNITS METRIC	THIRD ANGLE PROJECTION	
			mm	INCH	DRAWN BY GMENARLY	DATE 2015/04/15	TITLE MILLIGRID 2MM PITCH, THROUGH HOLE VERTICAL SHROUDED HEADER		
		4 PLACES ± --- ± ---			CHECKED BY CGOH	DATE 2015/06/29			
		3 PLACES ± --- ± ---	DRAFT WHERE APPLICABLE MUST REMAIN WITHIN DIMENSIONS		APPROVED BY KHL IM	DATE 2015/06/29			
THIS DRAWING CONTAINS INFORMATION THAT IS PROPRIETARY TO MOLEX INCORPORATED AND SHOULD NOT BE USED WITHOUT WRITTEN PERMISSION									



10 9 8 7 6 5 4 3 2 1

6 CIRCUITS

CKT SIZE	ASSY P/N WITHOUT CAP IN TUBE	ASSY P/N WITH CAP IN TUBE	ASSY P/N WITH CAP IN T&R	PLATING OPTIONS	FRICTION LOCKS		SIDE SLOTS		CENTER POLARIZATION	PEG	DIMENSION												
					DUAL	CENTER	DUAL	SINGLE			A	B	C	D	E	F	G	H					
6	87831-0619	N.A	N.A	1	N.A	N.A	YES	N.A	N.A	N.A	4.00	6.85	8.65	7.00	N.A	N.A	2.50	3.60±0.20					
	87831-0620	N.A	N.A	2																			
	87831-0621	N.A	N.A	3																			
	87831-0636	N.A	N.A	4	N.A	N.A	YES	N.A	N.A	YES						N.A	N.A		N.A	N.A	N.A	2.50	3.60±0.15
	87831-0628	N.A	N.A	2																			
	87831-0629	N.A	N.A	3																			
	87831-0641	N.A	N.A	2	N.A	YES	YES	N.A	N.A	N.A						N.A	N.A		N.A	N.A	N.A	2.50	3.60±0.10
	87831-0642	N.A	87831-5552	3																			
	87831-5241	N.A	N.A	2																			
	87831-5242	N.A	N.A	3	N.A	YES	YES	N.A	N.A	N.A						N.A	N.A		N.A	N.A	N.A	2.50	3.60±0.10
	87831-6241	N.A	N.A	2																			
	87831-6242	N.A	N.A	3																			
87831-0643	N.A	N.A	2	N.A	YES	N.A	YES	N.A	N.A	N.A	N.A	N.A	N.A	N.A	2.50	3.60±0.10							
87831-0644	N.A	N.A	3																				
87831-0645	N.A	N.A	2																				
87831-0646	N.A	N.A	3	N.A	YES	YES	N.A	N.A	YES	N.A	N.A	N.A	N.A	N.A	2.50	3.60±0.10							
87831-0632	N.A	N.A	2																				
87831-5119	N.A	N.A	1																				

PLATING OPTIONS:

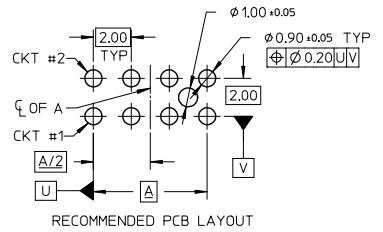
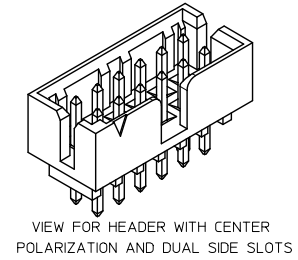
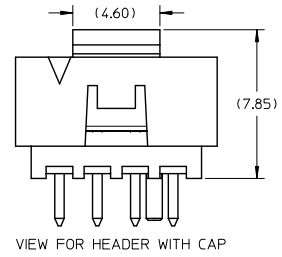
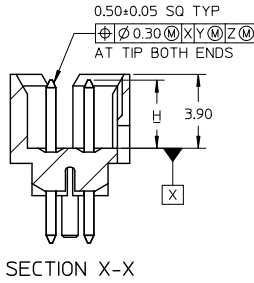
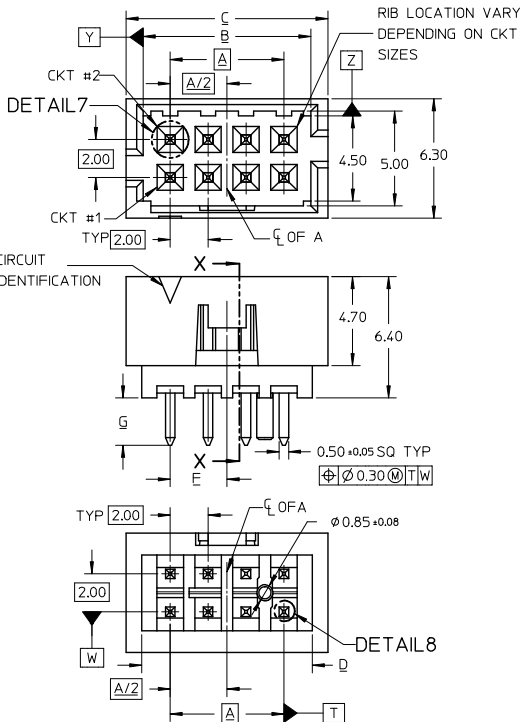
- 1 - 0.05-0.13um/2-5uin GOLD IN CONTACT AREA AND 1.88um/75uin MIN. MATTE TIN IN SOLDER TAIL AREA OVER 1.27um/50uin MIN. NICKEL OVERALL.
- 2 - 0.38um/15uin GOLD IN CONTACT AREA AND 1.88um/75uin MIN. MATTE TIN IN SOLDER TAIL AREA OVER 1.27um/50uin MIN. NICKEL OVERALL.
- 3 - 0.76um/30uin GOLD IN CONTACT AREA AND 1.88um/75uin MIN. MATTE TIN IN SOLDER TAIL AREA OVER 1.27um/50uin MIN. NICKEL OVERALL.
- 4 - 2.50um/100uin MIN. MATTE TIN OVER 1.25um/50uin MIN. NICKEL OVERALL.

SEE SHEET 1.2.4.6.8-10 EC NO: S2017-0022 DRAWN BY: 2016/07/04 CHKD: SCHEONG 2016/07/27 APPR: KHLIM 2016/07/28	QUALITY SYMBOLS	GENERAL TOLERANCES (UNLESS SPECIFIED)	DIMENSION STYLE	SCALE	DESIGN UNITS	THIRD ANGLE PROJECTION
	$\nabla=0$ $\nabla=0$ $\nabla=0$	mm    INCH 4 PLACES ± --- ± --- 3 PLACES ± --- ± --- 2 PLACES ± 0.20 ± --- 1 PLACE ± --- ± --- 0 PLACE ± --- ± ---	MM ONLY	NTS	METRIC	MILLIGRID 2MM PITCH, THROUGH HOLE VERTICAL SHROUDED HEADER
	DRAWN BY: GMENARLY 2015/04/15 CHECKED BY: CGOH 2015/06/29 APPROVED BY: KHLIM 2015/06/29	ANGULAR ± 3° DRAFT WHERE APPLICABLE MUST REMAIN WITHIN DIMENSIONS	MATERIAL NO. SEE TABLE	DOCUMENT NO. SD-87831-0001	SHEET NO. 5 OF 13	
	THIS DRAWING CONTAINS INFORMATION THAT IS PROPRIETARY TO MOLEX INCORPORATED AND SHOULD NOT BE USED WITHOUT WRITTEN PERMISSION					

1b\_frame\_A3\_P\_AM\_T Rev. G 2012/01/11 9 8 7 6 5 4 3 2 1

10 9 8 7 6 5 4 3 2 1

8 TO 12 CIRCUITS



- NOTES:
- MATERIALS:  
HOUSING: 30% GF, NYLON, UL94V-0, COLOR: BLACK  
PIN: 0.50MM SQ PHOSPHOR BRONZE
  - FINISHES: REFER TO PLATING OPTIONS
  - PRODUCT SPECIFICATION: PS-87831-027
  - PACKAGING SPECIFICATION: SEE PACKAGING SPECS TABLE ON SHEET 1
  - MATES WITH: A. MOLEX CRIMP RECEPTACLE HOUSING: 51110 SERIES AND CRIMP TERMINAL: 50394 SERIES  
B. MOLEX 2MM MILLIGRID DUAL ROW IDT: 87568 SERIES  
C. MOLEX 2MM MILLIGRID DUAL ROW RECEPTACLE: 79107 (GOLD PLATED), 78787 (TIN PLATED)

EDIT NOTE 4 EC NO: S2017-0022 DRAWN: MENARLY 2016/07/04 CHKD: SCHEONG 2016/07/27 APPR: KILLIM 2016/07/28 REV A5	QUALITY SYMBOLS	GENERAL TOLERANCES (UNLESS SPECIFIED)	DIMENSION STYLE	SCALE	DESIGN UNITS	THIRD ANGLE PROJECTION																		
	$\nabla=0$ $\nabla=0$ $\nabla=0$	<table border="1"> <tr><th colspan="2">mm</th><th>INCH</th></tr> <tr><td>4 PLACES</td><td>±---</td><td>±---</td></tr> <tr><td>3 PLACES</td><td>±---</td><td>±---</td></tr> <tr><td>2 PLACES</td><td>±0.20</td><td>±---</td></tr> <tr><td>1 PLACE</td><td>±---</td><td>±---</td></tr> <tr><td>0 PLACE</td><td>±---</td><td>±---</td></tr> </table>	mm		INCH	4 PLACES	±---	±---	3 PLACES	±---	±---	2 PLACES	±0.20	±---	1 PLACE	±---	±---	0 PLACE	±---	±---	MM ONLY	NTS	METRIC	
	mm		INCH																					
	4 PLACES	±---	±---																					
3 PLACES	±---	±---																						
2 PLACES	±0.20	±---																						
1 PLACE	±---	±---																						
0 PLACE	±---	±---																						
ANGULAR ± 3° DRAFT WHERE APPLICABLE MUST REMAIN WITHIN DIMENSIONS	DRAWN BY: GMENARLY CHECKED BY: CGOH APPROVED BY: KHLIM DATE: 2015/04/15 DATE: 2015/06/29 DATE: 2015/06/29	TITLE: MILLIGRID 2MM PITCH, THROUGH HOLE VERTICAL SHROUDED HEADER <b>molex</b> DOCUMENT NO. SD-87831-0001	SHEET NO. 6 OF 13																					

9 8 7 6 5 4 3 2 1



10 9 8 7 6 5 4 3 2 1

8 CIRCUITS

CKT SIZE	ASSY P/N WITHOUT CAP IN TUBE	ASSY P/N WITH CAP IN TUBE	ASSY P/N WITH CAP IN T&R	PLATING OPTIONS	FRICITION LOCKS				SIDE SLOTS		CENTER POLARIZATION	PEG	DIMENSION																
					DUAL	CENTER	DUAL	SINGLE	A	B			C	D	E	F	G	H											
8	87831-0819	N.A	N.A	1									6.00	8.85	10.65	9.00	N.A	3.00	2.50	3.60±0.20									
	87831-0820	N.A	N.A	2																									
	87831-0821	N.A	N.A	3		N.A	N.A	YES	N.A	YES	N.A																		
	87831-0836	N.A	N.A	4																									
	87831-0828	N.A	N.A	2																									
	87831-0829	N.A	N.A	3		N.A	N.A	YES	N.A	YES	YES																		
	87831-0841	N.A	87831-5551	2																									
	87831-0842	N.A	N.A	3		N.A	YES	YES	N.A	N.A	N.A																		
	87831-5441	N.A	N.A	2		N.A	YES	YES	N.A	N.A	N.A																		
	87831-5442	N.A	N.A	3																									
	87831-5541	N.A	N.A	2		N.A	YES	YES	N.A	N.A	N.A																		
	87831-5542	N.A	N.A	3																									
	87831-5741	N.A	N.A	2		N.A	YES	YES	N.A	N.A	N.A																		
	87831-5742	N.A	N.A	3																									
	87831-0832	N.A	N.A	2		N.A	YES	YES	N.A	N.A	YES																		
	87831-0843	N.A	N.A	2																									
87831-0844	N.A	N.A	3		N.A	YES	N.A	YES	N.A	N.A																			
87831-0845	N.A	N.A	2																										
87831-0846	N.A	N.A	3		N.A	YES	N.A	YES	N.A	YES																			

PLATING OPTIONS:

- 1 - 0.05-0.13um/2-5uin GOLD IN CONTACT AREA AND 1.88um/75uin MIN. MATTE TIN IN SOLDER TAIL AREA OVER 1.27um/50uin MIN. NICKEL OVERALL.
- 2 - 0.38um/15uin GOLD IN CONTACT AREA AND 1.88um/75uin MIN. MATTE TIN IN SOLDER TAIL AREA OVER 1.27um/50uin MIN. NICKEL OVERALL.
- 3 - 0.76um/30uin GOLD IN CONTACT AREA AND 1.88um/75uin MIN. MATTE TIN IN SOLDER TAIL AREA OVER 1.27um/50uin MIN. NICKEL OVERALL.
- 4 - 2.50um/100uin MIN. MATTE TIN OVER 1.25um/50uin MIN. NICKEL OVERALL.

SEE SHEET 12.4.6.8-10 EC NO: S2017-0022 DRAWN BY: GEMENARLY 2016/07/04 CHECKED BY: CHIKO-SICHONG 2016/07/27 APPR: KHLIM 2016/07/28	QUALITY SYMBOLS	GENERAL TOLERANCES (UNLESS SPECIFIED)	DIMENSION STYLE	SCALE	DESIGN UNITS	THIRD ANGLE PROJECTION
	$\nabla=0$ $\nabla=0$ $\nabla=0$	mm    INCH 4 PLACES ± --- ± --- 3 PLACES ± --- ± --- 2 PLACES ± 0.20 ± --- 1 PLACE ± --- ± --- 0 PLACE ± --- ± ---	MM ONLY	NTS	METRIC	MILLIGRID 2MM PITCH, THROUGH HOLE VERTICAL SHROUDED HEADER
	DRAWN BY: GEMENARLY 2015/04/15 CHECKED BY: CGOH 2015/06/29 APPROVED BY: KHLIM 2015/06/29	ANGULAR ± 3° DRAFT WHERE APPLICABLE MUST REMAIN WITHIN DIMENSIONS	MATERIAL NO. SEE TABLE	DOCUMENT NO. SD-87831-0001	SHEET NO. 7 OF 13	
	THIS DRAWING CONTAINS INFORMATION THAT IS PROPRIETARY TO MOLEX INCORPORATED AND SHOULD NOT BE USED WITHOUT WRITTEN PERMISSION					

10 9 8 7 6 5 4 3 2 1





10 9 8 7 6 5 4 3 2 1

10 TO 12 CIRCUITS

CKT SIZE	ASSY P/N WITHOUT CAP IN TUBE	ASSY P/N WITH CAP IN TUBE	ASSY P/N WITH CAP IN T&R	PLATING OPTIONS	FRICTION LOCKS				SIDE SLOTS		CENTER POLARIZATION	PEG	DIMENSION							
					DUAL	CENTER	DUAL	SINGLE	A	B			C	D	E	F	G	H		
10	87831-1019	N.A	N.A	1									8.00	10.85	12.65	11.00	N.A	N.A	2.50	3.60±0.20
	87831-1020	N.A	N.A	2																
	87831-1021	N.A	N.A	3	N.A	N.A	YES	N.A	YES	N.A										
	87831-1036	N.A	N.A	4																
	87831-1010	N.A	N.A	2																
	87831-1011	N.A	N.A	3	N.A	N.A	YES	N.A	YES	N.A										
	87831-1028	N.A	N.A	2																
	87831-1029	N.A	87831-5557	3	N.A	N.A	YES	N.A	YES	YES										
	87831-1035	N.A	N.A	3	N.A	N.A	YES	N.A	YES	YES										
	87831-1041	N.A	N.A	2																
	87831-1042	N.A	87831-5553	3	N.A	YES	YES	N.A	N.A	N.A										
	87831-1032	N.A	N.A	2	N.A	YES	YES	N.A	N.A	YES										
87831-1043	N.A	N.A	2																	
87831-1044	N.A	N.A	3	N.A	YES	N.A	YES	N.A	N.A											
87831-1045	N.A	N.A	2																	
87831-1046	N.A	N.A	3	N.A	YES	N.A	YES	N.A	YES											
12	87831-1219	N.A	N.A	1									10.00	12.85	14.65	13.00	N.A	N.A	2.50	3.60±0.20
	87831-1220	N.A	87831-5556	2																
	87831-1221	N.A	N.A	3	N.A	N.A	YES	N.A	YES	N.A										
	87831-1236	N.A	N.A	4																
	87831-1228	N.A	N.A	2																
	87831-1229	N.A	87831-5558	3	N.A	N.A	YES	N.A	YES	YES										
	87831-1241	N.A	N.A	2																
	87831-1242	N.A	N.A	3	N.A	YES	YES	N.A	N.A	N.A										
	87831-1255	87831-1256	N.A	2	N.A	YES	YES	N.A	N.A	N.A										
	87831-1232	N.A	N.A	2	N.A	YES	YES	N.A	N.A	YES										
	87831-1243	N.A	N.A	2																
	87831-1244	N.A	N.A	3	N.A	YES	N.A	YES	N.A	N.A										
87831-1245	N.A	N.A	2																	
87831-1246	N.A	N.A	3	N.A	YES	N.A	YES	N.A	YES											

PLATING OPTIONS:

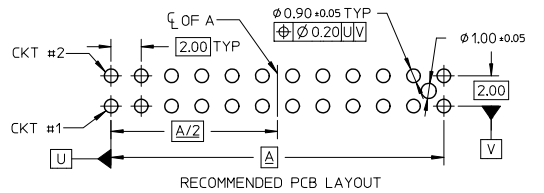
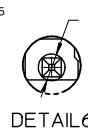
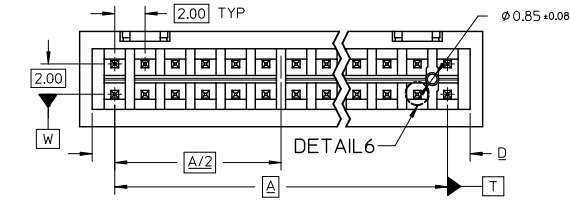
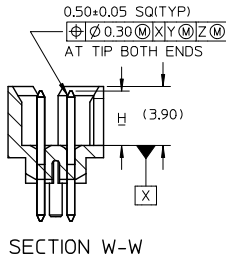
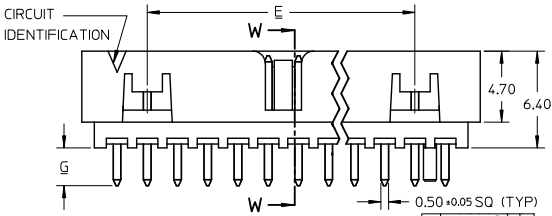
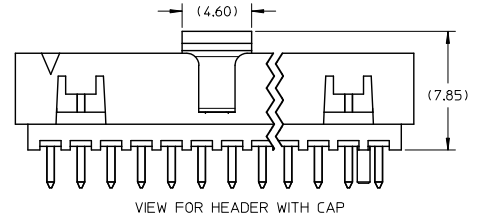
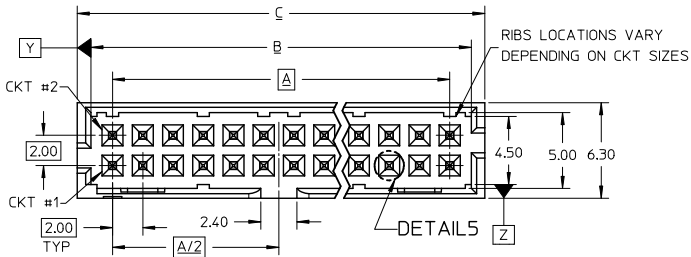
- 1 - 0.05-0.13um/2-5uin GOLD IN CONTACT AREA AND 1.88um/75uin MIN. MATTE TIN IN SOLDER TAIL AREA OVER 1.27um/50uin MIN. NICKEL OVERALL.
- 2 - 0.38um/15uin GOLD IN CONTACT AREA AND 1.88um/75uin MIN. MATTE TIN IN SOLDER TAIL AREA OVER 1.27um/50uin MIN. NICKEL OVERALL.
- 3 - 0.76um/30uin GOLD IN CONTACT AREA AND 1.88um/75uin MIN. MATTE TIN IN SOLDER TAIL AREA OVER 1.27um/50uin MIN. NICKEL OVERALL.
- 4 - 2.50um/100uin MIN. MATTE TIN OVER 1.25um/50uin MIN. NICKEL OVERALL.

ADD: 87831-5557-5558 EC NO: S2017-0022 DRAWN BY: CHYK-SCHONG CHECKED BY: KHLIM APPR: KHLIM REV: A5	QUALITY SYMBOLS ∇=0 ∇=0 ∇=0	GENERAL TOLERANCES (UNLESS SPECIFIED)		DIMENSION STYLE		SCALE	DESIGN UNITS	THIRD ANGLE PROJECTION			
				MM ONLY		NTS	METRIC				
				DRAWN BY: GMENARLY DATE: 2015/04/15		CHECKED BY: CGOH DATE: 2015/06/29		APPROVED BY: KHLIM DATE: 2015/06/29		TITLE: MILLIGRID 2MM PITCH, THROUGH HOLE VERTICAL SHROUDED HEADER	
				ANGULAR ± 3°		MATERIAL NO. SEE TABLE		DOCUMENT NO. SD-87831-0001		SHEET NO. 8 OF 13	

fb\_frame\_A3\_P\_AM\_T  
Rev. G 2012/01/11

9 8 7 6 5 4 3 2 1

14 TO 50 CIRCUITS



NOTES:

- MATERIALS:  
HOUSING: 30% GF, NYLON, UL94V-0, COLOR: BLACK  
PIN: 0.50MM SQ PHOSPHOR BRONZE
- FINISHES: REFER TO PLATING OPTIONS
- PRODUCT SPECIFICATION: PS-87831-027
- PACKAGING SPECIFICATION: SEE PACKAGING SPECS TABLE ON SHEET 1
- MATES WITH: A. MOLEX CRIMP RECEPTACLE HOUSING: 51110 SERIES AND CRIMP TERMINAL: 50394 SERIES  
B. MOLEX 2MM MILLIGRID DUAL ROW IDT: 87568 SERIES  
C. MOLEX 2MM MILLIGRID DUAL ROW RECEPTACLE: 79107 (GOLD PLATED), 78787 (TIN PLATED)

EDIT NOTE 4 EC NO: S2017-0022 DRAWN BY: G MENARLY CHKD: SCHEONG APPR: KHLIM 2016/07/27 2016/07/28	QUALITY SYMBOLS	GENERAL TOLERANCES (UNLESS SPECIFIED)		DIMENSION STYLE MM ONLY		SCALE NTS	DESIGN UNITS METRIC	THIRD ANGLE PROJECTION
	▽=0	4 PLACES ± --- ± ---	mm	INCH	DRAWN BY G MENARLY	DATE 2015/04/15	TITLE MILLIGRID 2MM PITCH, THROUGH HOLE VERTICAL SHROUDED HEADER	
	▽=0	3 PLACES ± --- ± ---	DRAFT WHERE APPLICABLE MUST REMAIN WITHIN DIMENSIONS		CHECKED BY CGOH	DATE 2015/06/29	DOCUMENT NO. SD-87831-0001	
	▽=0	2 PLACES ± 0.20 ± ---	MATERIAL NO. SEE TABLE		APPROVED BY KHLIM	DATE 2015/06/29	SHEET NO. 9 OF 13	

10 9 8 7 6 5 4 3 2 1

14 TO 20 CIRCUITS

CKT SIZE	ASSY P/N WITHOUT CAP IN TUBE	ASSY P/N WITH CAP IN TUBE	ASSY P/N WITH CAP IN T&R	PLATING OPTIONS	FRICITION LOCKS				SIDE SLOTS		CENTER POLARIZATION	PEG	DIMENSION							
					DUAL	CENTER	DUAL	SINGLE	A	B			C	D	E	F	G	H		
14	87831-1419	N.A	N.A	1									12.00	14.85	16.65	15.00	8.00	N.A	2.50	3.60±0.20
	87831-1420	87831-1430	87831-5554	2	YES	N.A	YES	N.A	YES	N.A										
	87831-1421	N.A	N.A	3																
	87831-1436	N.A	N.A	4																
	87831-1428	N.A	N.A	2	YES	N.A	YES	N.A	YES	YES										
	87831-1429	N.A	N.A	3	YES	N.A	YES	N.A	YES	YES										
	87831-1435	N.A	N.A	3	YES	N.A	YES	N.A	YES	YES										
	87831-1410	N.A	N.A	2	YES	N.A	YES	N.A	YES	N.A										
87831-1411	N.A	N.A	3																	
16	87831-1619	N.A	N.A	1								14.00	16.85	18.65	17.00	10.00	N.A	2.50	3.60±0.20	
	87831-1620	N.A	N.A	2	YES	N.A	YES	N.A	YES	N.A										
	87831-1621	N.A	N.A	3																
	87831-1636	N.A	N.A	4																
	87831-1628	N.A	N.A	2	YES	N.A	YES	N.A	YES	YES										
	87831-1629	N.A	87831-5559	3	YES	N.A	YES	N.A	YES	YES										
87831-1635	N.A	N.A	3	YES	N.A	YES	N.A	YES	YES											
18	87831-1819	N.A	N.A	1								16.00	18.85	20.65	19.00	12.00	N.A	2.50	3.60±0.20	
	87831-1820	N.A	N.A	2	YES	N.A	YES	N.A	YES	N.A										
	87831-1821	N.A	N.A	3																
	87831-1836	N.A	N.A	4																
	87831-1828	N.A	N.A	2	YES	N.A	YES	N.A	YES	YES										
	87831-1829	N.A	N.A	3	YES	N.A	YES	N.A	YES	YES										
20	87831-2019	N.A	N.A	1								18.00	20.85	22.65	21.00	14.00	N.A	2.50	3.60±0.20	
	87831-2020	N.A	N.A	2	YES	N.A	YES	N.A	YES	N.A										
	87831-2021	N.A	N.A	3																
	87831-2036	N.A	N.A	4																
	87831-2028	N.A	N.A	2	YES	N.A	YES	N.A	YES	YES										
	87831-2029	N.A	N.A	3	YES	N.A	YES	N.A	YES	YES										
	87831-2035	N.A	N.A	3	YES	N.A	YES	N.A	YES	YES										
	87831-2010	N.A	N.A	2	YES	N.A	YES	N.A	YES	N.A										
87831-2011	N.A	N.A	3																	

PLATING OPTIONS:

- 1 - 0.05-0.13um/2-5uin GOLD IN CONTACT AREA AND 1.88um/75uin MIN. MATTE TIN IN SOLDER TAIL AREA OVER 1.27um/50uin MIN. NICKEL OVERALL.
- 2 - 0.38um/15uin GOLD IN CONTACT AREA AND 1.88um/75uin MIN. MATTE TIN IN SOLDER TAIL AREA OVER 1.27um/50uin MIN. NICKEL OVERALL.
- 3 - 0.76um/30uin GOLD IN CONTACT AREA AND 1.88um/75uin MIN. MATTE TIN IN SOLDER TAIL AREA OVER 1.27um/50uin MIN. NICKEL OVERALL.
- 4 - 2.50um/100uin MIN. MATTE TIN OVER 1.25um/50uin MIN. NICKEL OVERALL.

ADD 87831-5559 EC NO. S2017-0022 DRAWN: MENARLY 2016/07/04 CHKD: SCHEONG 2016/07/27 APPR: KHLIM 2016/07/28 REV A5	QUALITY SYMBOLS ∇=0 ∇=0 ∇=0	GENERAL TOLERANCES (UNLESS SPECIFIED) 4 PLACES ± --- ± --- 3 PLACES ± --- ± --- 2 PLACES ± 0.20 ± --- 1 PLACE ± --- ± --- 0 PLACE ± --- ± --- ANGULAR ± 3° DRAFT WHERE APPLICABLE MUST REMAIN WITHIN DIMENSIONS	DIMENSION STYLE MM ONLY DRAWN BY DATE GMENARLY 2015/04/15 CHECKED BY DATE CGOH 2015/06/29 APPROVED BY DATE KHLIM 2015/06/29	SCALE NTS DESIGN UNITS METRIC THIRD ANGLE PROJECTION	TITLE MILLIGRID 2MM PITCH, THROUGH HOLE VERTICAL SHROUDED HEADER <b>molex</b> MATERIAL NO. SEE TABLE DOCUMENT NO. SD-87831-0001 SHEET NO. 10 OF 13
	THIS DRAWING CONTAINS INFORMATION THAT IS PROPRIETARY TO MOLEX INCORPORATED AND SHOULD NOT BE USED WITHOUT WRITTEN PERMISSION				
	SIZE A3				
	SEE TABLE				

9 8 7 6 5 4 3 2 1

10 9 8 7 6 5 4 3 2 1

22 TO 30 CIRCUITS

CKT SIZE	ASSY P/N WITHOUT CAP IN TUBE	ASSY P/N WITH CAP IN TUBE	ASSY P/N WITH CAP IN T&R	PLATING OPTIONS	FRICTION LOCKS		SIDE SLOTS		CENTER POLARIZATION	PEG	DIMENSION							
					DUAL	CENTER	DUAL	SINGLE			A	B	C	D	E	F	G	H
22	87831-2219	N.A	N.A	1	YES	N.A	YES	N.A	YES	N.A	20.00	22.85	24.65	23.00	16.00	N.A	2.50	3.60±0.20
	87831-2220	N.A	N.A	2														
	87831-2221	N.A	N.A	3														
	87831-2236	N.A	N.A	4														
	87831-2228	N.A	N.A	2														
22	87831-2229	N.A	N.A	3	YES	N.A	YES	N.A	YES	YES							2.50	
	87831-2419	N.A	N.A	1	YES	N.A	YES	N.A	YES	N.A	22.00	24.85	26.65	25.00	18.00	N.A	2.50	3.60±0.20
87831-2420	N.A	N.A	2															
87831-2421	N.A	N.A	3															
87831-2436	N.A	N.A	4															
87831-2428	N.A	N.A	2															
24	87831-2429	N.A	N.A	3	YES	N.A	YES	N.A	YES	YES							2.50	
	87831-2435	N.A	N.A	3	YES	N.A	YES	N.A	YES	YES							3.50	
	87831-2410	N.A	N.A	2	YES	N.A	YES	N.A	YES	N.A							3.50	
	87831-2619	N.A	N.A	1	YES	N.A	YES	N.A	YES	N.A	24.00	26.85	28.65	27.00	20.00	N.A	2.50	3.60±0.20
	87831-2620	87831-2630	87831-5555	2														
87831-2621	N.A	N.A	3															
87831-2636	N.A	N.A	4															
87831-2628	N.A	N.A	2															
26	87831-2629	N.A	N.A	3	YES	N.A	YES	N.A	YES	YES							2.50	
	87831-2610	N.A	N.A	2	YES	N.A	YES	N.A	YES	N.A							3.50	
	87831-2819	N.A	N.A	1	YES	N.A	YES	N.A	YES	N.A	26.00	28.85	30.65	29.00	22.00	N.A	2.50	3.60±0.20
	87831-2820	N.A	N.A	2														
	87831-2821	N.A	N.A	3														
87831-2836	N.A	N.A	4															
87831-2828	N.A	N.A	2															
28	87831-2829	N.A	N.A	3	YES	N.A	YES	N.A	YES	YES							2.50	
	87831-3019	N.A	N.A	1	YES	N.A	YES	N.A	YES	N.A	28.00	30.85	32.65	31.00	24.00	N.A	2.50	3.60±0.20
	87831-3020	N.A	N.A	2														
	87831-3021	N.A	N.A	3														
	87831-3036	N.A	N.A	4														
87831-3028	N.A	N.A	2															
30	87831-3029	N.A	N.A	3	YES	N.A	YES	N.A	YES	YES							2.50	
	87831-3035	N.A	N.A	3	YES	N.A	YES	N.A	YES	YES							3.50	
	87831-3010	87831-3030	87831-3050	2	YES	N.A	YES	N.A	YES	N.A							3.50	

PLATING OPTIONS:

- 1 - 0.05-0.13um/2-5uin GOLD IN CONTACT AREA AND 1.88um/75uin MIN. MATTE TIN IN SOLDER TAIL AREA OVER 1.27um/50uin MIN. NICKEL OVERALL.
- 2 - 0.38um/15uin GOLD IN CONTACT AREA AND 1.88um/75uin MIN. MATTE TIN IN SOLDER TAIL AREA OVER 1.27um/50uin MIN. NICKEL OVERALL.
- 3 - 0.76um/30uin GOLD IN CONTACT AREA AND 1.88um/75uin MIN. MATTE TIN IN SOLDER TAIL AREA OVER 1.27um/50uin MIN. NICKEL OVERALL.
- 4 - 2.50um/100uin MIN. MATTE TIN OVER 1.25um/50uin MIN. NICKEL OVERALL.

SEE SHEET 1.2.4.6.8-10  
 EC NO: S2017-0022  
 DRAWN BY: CHYK-SCHONG  
 CHECKED BY: KHLIM  
 DATE: 2016/07/27  
 DATE: 2016/07/28  
 APPR: KHLIM

QUALITY SYMBOLS  
 ∇=0  
 ∇=0  
 ∇=0

GENERAL TOLERANCES (UNLESS SPECIFIED)	
	mm
4 PLACES	±---
3 PLACES	±---
2 PLACES	±0.20
1 PLACE	±---
0 PLACE	±---

DIMENSION STYLE	
MM ONLY	
DRAWN BY	DATE
G MENARLY	2015/04/15
CHECKED BY	DATE
CGOH	2015/06/29
APPROVED BY	DATE
KHLIM	2015/06/29

SCALE NTS DESIGN UNITS METRIC THIRD ANGLE PROJECTION

MILLIGRID  
 2MM PITCH, THROUGH HOLE  
 VERTICAL SHROUDED HEADER

**molex**

MATERIAL NO. SEE TABLE DOCUMENT NO. SD-87831-0001 SHEET NO. 11 OF 13

DRAFT WHERE APPLICABLE MUST REMAIN WITHIN DIMENSIONS

THIS DRAWING CONTAINS INFORMATION THAT IS PROPRIETARY TO MOLEX INCORPORATED AND SHOULD NOT BE USED WITHOUT WRITTEN PERMISSION

ib\_frame\_A3\_P\_AM\_T Rev. G 2012/01/11

10 9 8 7 6 5 4 3 2 1

32 TO 40 CIRCUITS

F	CKT SIZE	ASSY P/N WITHOUT CAP IN TUBE	ASSY P/N WITH CAP IN TUBE	ASSY P/N WITH CAP IN T&R	PLATING OPTIONS	FRICTION LOCKS		SIDE SLOTS		CENTER POLARIZATION	PEG	DIMENSION							
						DUAL	CENTER	DUAL	SINGLE			A	B	C	D	E	F	G	H
32	87831-3219	N.A	N.A	1	YES	N.A	YES	N.A	YES	N.A	30.00	32.85	34.65	33.00	26.00	N.A	2.50	3.60±0.20	
	87831-3220	N.A	N.A	2															
	87831-3221	N.A	N.A	3															
	87831-3236	N.A	N.A	4															
	87831-3228	N.A	N.A	2															
34	87831-3419	N.A	N.A	1	YES	N.A	YES	N.A	YES	N.A	32.00	34.85	36.65	35.00	28.00	N.A	2.50	3.60±0.20	
	87831-3420	N.A	N.A	2															
	87831-3421	N.A	N.A	3															
	87831-3436	N.A	N.A	4															
	87831-3428	N.A	N.A	2															
36	87831-3619	N.A	N.A	1	YES	N.A	YES	N.A	YES	N.A	34.00	36.85	38.65	37.00	30.00	N.A	2.50	3.60±0.20	
	87831-3620	N.A	N.A	2															
	87831-3621	N.A	N.A	3															
	87831-3636	N.A	N.A	4															
	87831-3628	N.A	N.A	2															
38	87831-3819	N.A	N.A	1	YES	N.A	YES	N.A	YES	N.A	36.00	38.85	40.65	39.00	32.00	N.A	2.50	3.60±0.20	
	87831-3820	N.A	N.A	2															
	87831-3821	N.A	N.A	3															
	87831-3836	N.A	N.A	4															
	87831-3828	N.A	N.A	2															
40	87831-4019	N.A	N.A	1	YES	N.A	YES	N.A	YES	N.A	38.00	40.85	42.65	41.00	34.00	N.A	2.50	3.60±0.20	
	87831-4020	N.A	N.A	2															
	87831-4021	N.A	N.A	3															
	87831-4036	N.A	N.A	4															
	87831-4028	N.A	N.A	2															

PLATING OPTIONS:

- 1 - 0.05-0.13um/2-5uin GOLD IN CONTACT AREA AND 1.88um/75uin MIN. MATTE TIN IN SOLDER TAIL AREA OVER 1.27um/50uin MIN. NICKEL OVERALL.
- 2 - 0.38um/15uin GOLD IN CONTACT AREA AND 1.88um/75uin MIN. MATTE TIN IN SOLDER TAIL AREA OVER 1.27um/50uin MIN. NICKEL OVERALL.
- 3 - 0.76um/30uin GOLD IN CONTACT AREA AND 1.88um/75uin MIN. MATTE TIN IN SOLDER TAIL AREA OVER 1.27um/50uin MIN. NICKEL OVERALL.
- 4 - 2.50um/100uin MIN. MATTE TIN OVER 1.25um/50uin MIN. NICKEL OVERALL.

SEE SHEET 12.4.6.8-10 EC. NO. S2017-0022 DRAWN:HEARLY 2016/07/04 CHKD:SCHEONG 2016/07/27 APPR:KHLIM 2016/07/28 REV A5	QUALITY SYMBOLS ∇=0 ∇=0 ∇=0	GENERAL TOLERANCES (UNLESS SPECIFIED) 4 PLACES ± --- ± --- 3 PLACES ± --- ± --- 2 PLACES ± 0.20 ± --- 1 PLACE ± --- ± --- 0 PLACE ± --- ± --- ANGULAR ± 3° DRAFT WHERE APPLICABLE MUST REMAIN WITHIN DIMENSIONS	DIMENSION STYLE MM ONLY DRAWN BY DATE GMENARLY 2015/04/15 CHECKED BY DATE CGOH 2015/06/29 APPROVED BY DATE KHLIM 2015/06/29	SCALE NTS DESIGN UNITS METRIC THIRD ANGLE PROJECTION	TITLE MILLIGRID 2MM PITCH, THROUGH HOLE VERTICAL SHROUDED HEADER <b>molex</b> MATERIAL NO. SEE TABLE DOCUMENT NO. SD-87831-0001 SHEET NO. 12 OF 13
	THIS DRAWING CONTAINS INFORMATION THAT IS PROPRIETARY TO MOLEX INCORPORATED AND SHOULD NOT BE USED WITHOUT WRITTEN PERMISSION				
	SEE TABLE				
	SEE TABLE				

9 8 7 6 5 4 3 2 1



10 9 8 7 6 5 4 3 2 1

42 TO 50 CIRCUITS

CKT SIZE	ASSY P/N WITHOUT CAP IN TUBE	ASSY P/N WITH CAP IN TUBE	ASSY P/N WITH CAP IN T&R	PLATING OPTIONS	FRICTION LOCKS		SIDE SLOTS		CENTER POLARIZATION	PEG	DIMENSION															
					DUAL	CENTER	DUAL	SINGLE			A	B	C	D	E	F	G	H								
42	87831-4219	N.A	N.A	1							40.00	42.85	44.65	43.00	36.00	N.A	2.50	3.60±0.20								
	87831-4220	N.A	N.A	2																						
	87831-4221	N.A	N.A	3	YES	N.A	YES	N.A	YES	N.A																
	87831-4236	N.A	N.A	4																						
	87831-4228	N.A	N.A	2																						
	87831-4229	N.A	N.A	3	YES	N.A	YES	N.A	YES	YES							2.50									
44	87831-4419	N.A	N.A	1							42.00	44.85	46.65	45.00	38.00	N.A	2.50	3.60±0.20								
	87831-4420	N.A	N.A	2																						
	87831-4421	N.A	N.A	3	YES	N.A	YES	N.A	YES	N.A																
	87831-4436	N.A	N.A	4																						
	87831-4428	N.A	N.A	2	YES	N.A	YES	N.A	YES	YES																
	87831-4429	N.A	N.A	3													2.50									
	87831-4435	N.A	N.A	3	YES	N.A	YES	N.A	YES	YES							3.50									
46	87831-4619	N.A	N.A	1							44.00	46.85	48.65	47.00	40.00	N.A	2.50	3.60±0.20								
	87831-4620	N.A	N.A	2																						
	87831-4621	N.A	N.A	3	YES	N.A	YES	N.A	YES	N.A																
	87831-4636	N.A	N.A	4																						
	87831-4628	N.A	N.A	2	YES	N.A	YES	N.A	YES	YES																
	87831-4629	N.A	N.A	3													2.50									
48	87831-4819	N.A	N.A	1							46.00	48.85	50.65	49.00	42.00	N.A	2.50	3.60±0.20								
	87831-4820	N.A	N.A	2																						
	87831-4821	N.A	N.A	3	YES	N.A	YES	N.A	YES	N.A																
	87831-4836	N.A	N.A	4																						
	87831-4828	N.A	N.A	2	YES	N.A	YES	N.A	YES	YES																
	87831-4829	N.A	N.A	3													2.50									
50	87831-5019	N.A	N.A	1							48.00	50.85	52.65	51.00	44.00	N.A	2.50	3.60±0.20								
	87831-5020	N.A	N.A	2																						
	87831-5021	N.A	N.A	3	YES	N.A	YES	N.A	YES	N.A																
	87831-5036	N.A	N.A	4																						
	87831-5028	N.A	N.A	2	YES	N.A	YES	N.A	YES	YES																
	87831-5029	N.A	N.A	3													2.50									
	87831-5035	N.A	N.A	3	YES	N.A	YES	N.A	YES	YES							3.50									

PLATING OPTIONS:

- 1 - 0.05-0.13um/2-5uin GOLD IN CONTACT AREA AND 1.88um/75uin MIN. MATTE TIN IN SOLDER TAIL AREA OVER 1.27um/50uin MIN. NICKEL OVERALL.
- 2 - 0.38um/15uin GOLD IN CONTACT AREA AND 1.88um/75uin MIN. MATTE TIN IN SOLDER TAIL AREA OVER 1.27um/50uin MIN. NICKEL OVERALL.
- 3 - 0.76um/30uin GOLD IN CONTACT AREA AND 1.88um/75uin MIN. MATTE TIN IN SOLDER TAIL AREA OVER 1.27um/50uin MIN. NICKEL OVERALL.
- 4 - 2.50um/100uin MIN. MATTE TIN OVER 1.25um/50uin MIN. NICKEL OVERALL.

SEE SHEET 1.2.4.6.8-10 IEC NO. S2017-0022 DRAWN BY: GMENARLY 2016/07/06 CHECKED BY: CHIKO-SCHEONG 2016/07/27 APPR: KHL IM 2016/07/28 REV: A5	QUALITY SYMBOLS √=0 √=0 √=0	GENERAL TOLERANCES (UNLESS SPECIFIED) 4 PLACES ± --- ± --- 3 PLACES ± --- ± --- 2 PLACES ± 0.20 ± --- 1 PLACE ± --- ± --- 0 PLACE ± --- ± ---	DIMENSION STYLE MM ONLY DRAWN BY: GMENARLY DATE: 2015/04/15 CHECKED BY: CGOH DATE: 2015/06/29 APPROVED BY: KHL IM DATE: 2015/06/29	SCALE: NTS DESIGN UNITS: METRIC THIRD ANGLE PROJECTION	TITLE: MILLIGRID 2MM PITCH, THROUGH HOLE VERTICAL SHROUDED HEADER <b>molex</b> MATERIAL NO. SEE TABLE DOCUMENT NO. SD-87831-0001 SHEET NO. 13 OF 13
	ANGULAR ± 3° DRAFT WHERE APPLICABLE MUST REMAIN WITHIN DIMENSIONS		THIS DRAWING CONTAINS INFORMATION THAT IS PROPRIETARY TO MOLEX INCORPORATED AND SHOULD NOT BE USED WITHOUT WRITTEN PERMISSION		

tb\_frame\_A3\_P\_AM\_T  
Rev. G 2012/01/11

9 8 7 6 5 4 3 2 1