

Excellent Integrated System Limited

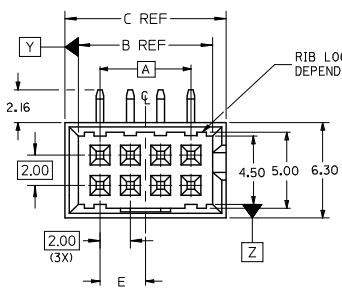
Stocking Distributor

Click to view price, real time Inventory, Delivery & Lifecycle Information:

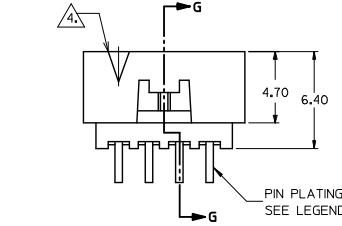
[Molex Connector Corporation](#)
[0878331233](#)

For any questions, you can email us directly:
sales@integrated-circuit.com

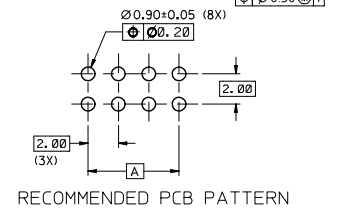
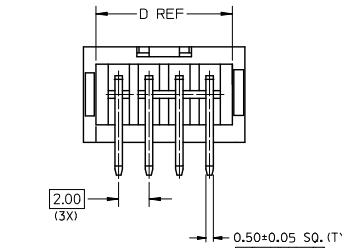
10 9 8 7 6 5 4 3 2 1



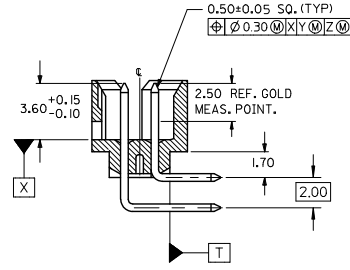
RIB LOCATIONS VARY DEPENDING ON CKT. SIZES.



PIN PLATING SEE LEGEND



RECOMMENDED PCB PATTERN

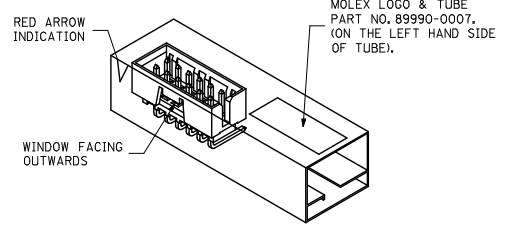


SECTION G-G

PART NUMBER LEGEND

- 87833 - * * 3 *
- CKT SIZE PLATING OPTION
- 3 - 0.38µm/15µin GOLD IN CONTACT AREA AND 188µm/75µin MIN. TIN IN SOLDER TAIL AREA OVER 1.27µm/50µin MIN. NICKEL OVERALL.
 - 4 - 0.76µm/30µin GOLD IN CONTACT AREA AND 188µm/75µin MIN. TIN IN SOLDER TAIL AREA OVER 1.27µm/50µin MIN. NICKEL OVERALL.

PART NO.	CKT SIZE	DIMENSION				
		A	B	C	D	E
87833-043*	4	2.00	4.85	6.65	5.00	1.00
87833-063*	6	4.00	6.85	8.65	7.00	2.00
87833-083*	8	6.00	8.85	10.65	9.00	3.00
87833-103*	10	8.00	10.85	12.65	11.00	4.00
87833-123*	12	10.00	12.85	14.65	13.00	5.00



ORIENTATION OF PART IN TUBE.
(FOR THE REFERENCE OF PART/TUBE ASSEMBLY.)

NOTES:

1. FOR ILLUSTRATION PURPOSES, 8 CKT. SIZE WAFER IS SHOWN.
2. MATERIAL:
HOUSING: 30% GF, NYLON 46
UL 94v-0, COLOR BLACK
PIN : 0.50MM SQ.PHOSPHOR BRONZE
3. PIN PUSHOUT FORCE 0.91KG MIN.
4. CKT 4 & 6 HAS NO IDENTIFICATION TAG.
5. PRODUCT SPECIFICATION PS-87831-027 APPLIES.
6. THIS HEADER MATES WITH MOLEX:
a) CRIMP RECEPTACLE HOUSING, 51110 SERIES WITH CRIMP TERMINAL, 50394 SERIES.
b) 2MM MILLIGRID DUAL ROW IDT, 87568 SERIES.
7. PARTS TO BE PACKED IN TUBE WITH MOISTURE BARRIER BAG.
8. NO CENTRE POLARIZATION SLOT FOR CKT 4 AND 6.

ADD IN NOTES NO. 8 EC. NO. S2009-0964 DRAWN: YONGHONG 2009/07/08 CHKD: SKANG 2009/07/08 APPR: HLONG 2009/07/15 REV A3	QUALITY SYMBOLS ▽=0 ▽=0	GENERAL TOLERANCES (UNLESS SPECIFIED)		DIMENSION STYLE MM ONLY		SCALE NTS	DESIGN UNITS METRIC	THIRD ANGLE PROJECTION	
		4 PLACES ± --- ± --- 3 PLACES ± --- ± --- 2 PLACES ± 0.2 ± --- 1 PLACE ± --- ± --- ANGULAR ± 3 °		DRAWN BY ATSEE 2004/09/08		DATE 2004/09/08		TITLE MGRID, SHROUDED HEADER W/LOCKING FEATURE & SINGLE SIDE SLOT, R/A	
		DRAFT WHERE APPLICABLE MUST REMAIN WITHIN DIMENSIONS		CHECKED BY KCLING 2004/09/23		DATE 2004/09/23		MOLEX INCORPORATED	
		MATERIAL NO. SEE TABLE		APPROVED BY SKTOH 2004/09/23		DATE 2004/09/23		MOLEX INCORPORATED	
MATERIAL NO. SEE TABLE				DOCUMENT NO. SD-87833-037		SHEET NO. 1 OF 1		THIS DRAWING CONTAINS INFORMATION THAT IS PROPRIETARY TO MOLEX INCORPORATED AND SHOULD NOT BE USED WITHOUT WRITTEN PERMISSION	

10 9 8 7 6 5 4 3 2 1