

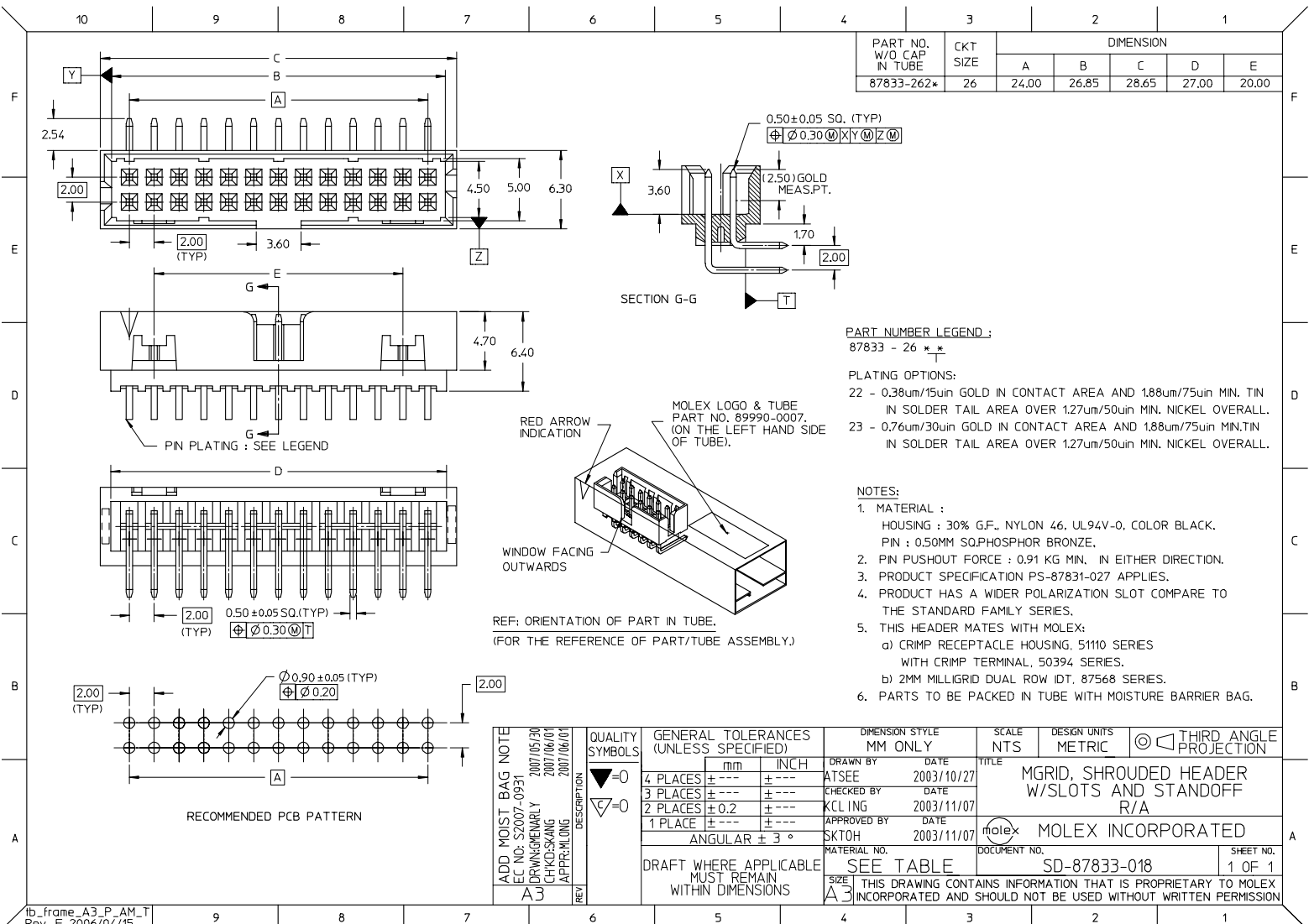
## **Excellent Integrated System Limited**

Stocking Distributor

Click to view price, real time Inventory, Delivery & Lifecycle Information:

[Molex Connector Corporation](#)  
[0878332622](#)

For any questions, you can email us directly:  
[sales@integrated-circuit.com](mailto:sales@integrated-circuit.com)



PART NO. W/O CAP IN TUBE	CKT SIZE	DIMENSION				
		A	B	C	D	E
87833-262*	26	24.00	26.85	28.65	27.00	20.00

**PART NUMBER LEGEND :**  
87833 - 26 \* \* \*

**PLATING OPTIONS:**

- 22 - 0.38um/15uin GOLD IN CONTACT AREA AND 1.88um/75uin MIN. TIN IN SOLDER TAIL AREA OVER 1.27um/50uin MIN. NICKEL OVERALL.
- 23 - 0.76um/30uin GOLD IN CONTACT AREA AND 1.88um/75uin MIN. TIN IN SOLDER TAIL AREA OVER 1.27um/50uin MIN. NICKEL OVERALL.

**NOTES:**

1. MATERIAL :  
HOUSING : 30% G.F., NYLON 46, UL94V-0, COLOR BLACK.  
PIN : 0.50MM SQ.PHOSPHOR BRONZE.
2. PIN PUSHOUT FORCE : 0.91 KG MIN. IN EITHER DIRECTION.
3. PRODUCT SPECIFICATION PS-87831-027 APPLIES.
4. PRODUCT HAS A WIDER POLARIZATION SLOT COMPARE TO THE STANDARD FAMILY SERIES.
5. THIS HEADER MATES WITH MOLEX:  
a) CRIMP RECEPTACLE HOUSING, 51110 SERIES WITH CRIMP TERMINAL, 50394 SERIES.  
b) 2MM MILLIGRID DUAL ROW IDT, 87568 SERIES.
6. PARTS TO BE PACKED IN TUBE WITH MOISTURE BARRIER BAG.

REF: ORIENTATION OF PART IN TUBE,  
(FOR THE REFERENCE OF PART/TUBE ASSEMBLY.)

<b>ADD MOIST BAG NOTE</b> EC NO: S2007-0931 DRAWING/REVISION CHKD:SKANG APPR:HLONG 2007/05/20 2007/06/01 2007/06/01	<b>QUALITY SYMBOLS</b> ▽=0 ▽=0	<b>GENERAL TOLERANCES (UNLESS SPECIFIED)</b>		<b>DIMENSION STYLE</b> MM ONLY	<b>SCALE</b> NTS	<b>DESIGN UNITS</b> METRIC	THIRD ANGLE PROJECTION		
		4 PLACES ± --- ± --- 3 PLACES ± --- ± --- 2 PLACES ± 0.2 ± --- 1 PLACE ± --- ± ---	mm      INCH	DRAWN BY ATSEE	DATE 2003/10/27	<b>TITLE</b> MGRID, SHROUDED HEADER W/SLOTS AND STANDOFF R/A			
		ANGULAR ± 3 °		CHECKED BY KCL ING	DATE 2003/11/07	<b>MOLEX INCORPORATED</b>			
		DRAFT WHERE APPLICABLE MUST REMAIN WITHIN DIMENSIONS		APPROVED BY SKTOH	DATE 2003/11/07	MATERIAL NO. SEE TABLE	DOCUMENT NO. SD-87833-018	SHEET NO. 1 OF 1	