



Distributor of Molex Connector Corporation: Excellent Integrated System Limited

Datasheet of 0386007806 - Connector Barrier Block Strip 6 Circuit 0.250" (6.35mm)

Contact us: sales@integrated-circuit.com Website: www.integrated-circuit.com

Excellent Integrated System Limited

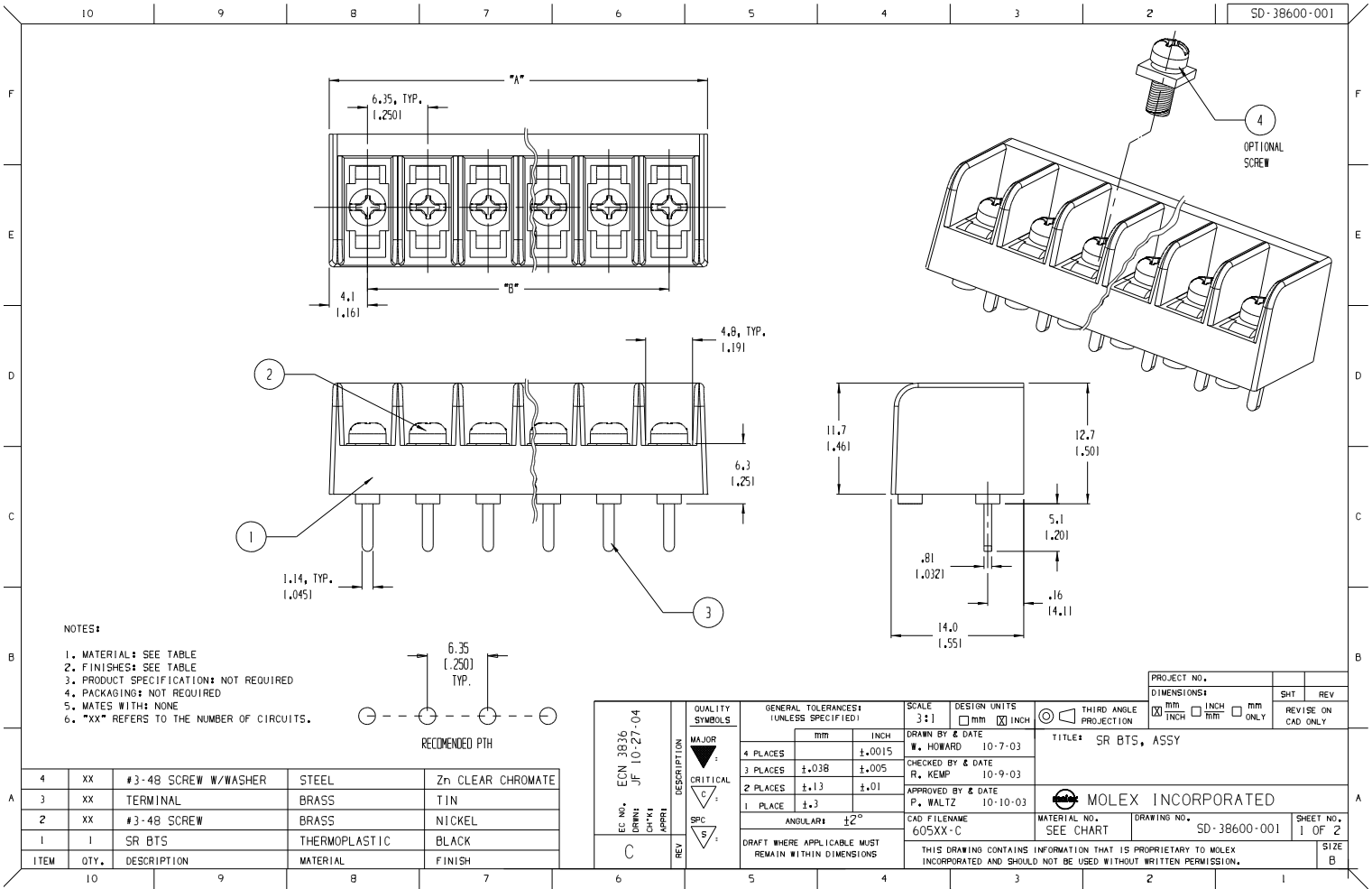
Stocking Distributor

Click to view price, real time Inventory, Delivery & Lifecycle Information:

[Molex Connector Corporation](#)
[0386007806](#)

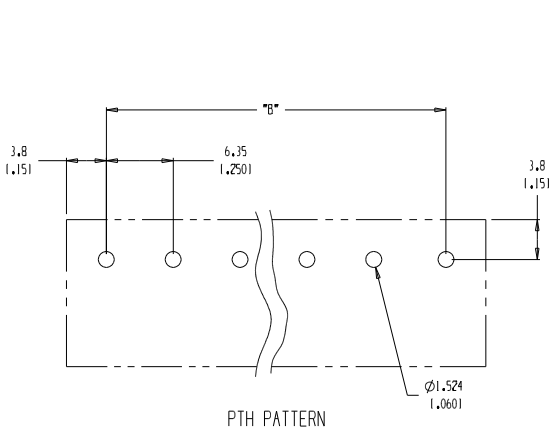
For any questions, you can email us directly:

sales@integrated-circuit.com



EC NO.	ECN	DRWN	CHKD	APPRD	DESCRIPTION	QUALITY SYMBOLS	GENERAL TOLERANCES: (UNLESS SPECIFIED)	SCALE	DESIGN UNITS	THIRD ANGLE PROJECTION	DIMENSIONS:	SHT	REV
C	3836	JF	10-27-04		SR BTS, ASSY	MAJOR CRITICAL SPEC	4 PLACES ±.0015 3 PLACES ±.0038 2 PLACES ±.013 1 PLACE ±.03	3:1	<input type="checkbox"/> mm <input checked="" type="checkbox"/> INCH	<input checked="" type="checkbox"/> THIRD ANGLE	<input checked="" type="checkbox"/> mm <input type="checkbox"/> INCH		
DRAWN BY & DATE: W. HOWARD 10-7-03						CHECKED BY & DATE: R. KEMP 10-9-03		APPROVED BY & DATE: P. WALTZ 10-10-03		TITLE: SR BTS, ASSY		MATERIAL NO. SEE CHART	
CAD FILENAME: 605XX-C						DRAWING NO.: SD-38600-001		SHEET NO.: 1 OF 2		THIS DRAWING CONTAINS INFORMATION THAT IS PROPRIETARY TO MOLEX INCORPORATED AND SHOULD NOT BE USED WITHOUT WRITTEN PERMISSION.		SIZE B	

10 9 8 7 6 5 4 3 2 SD-38600-001



NUMBER OF CIRCUITS "XX"	DIM. "A"		DIM. "B"		MATERIAL NO. (OPT -C, -50)	MATERIAL NO. (OPT -C)	MATERIAL NO. (INSULATOR)
02	14.48	1.5701	6.35	1.2501	38600-7802	38600-6602	38608-2735
03	20.83	1.8201	12.70	1.5001	38600-7803	38600-6603	38608-2736
04	27.18	1.0701	19.05	1.7501	38600-7804	38600-6604	38608-2737
05	33.53	1.3201	25.40	1.0001	38600-7805	38600-6605	38608-2738
06	39.88	1.5701	31.75	1.2501	38600-7806	38600-6606	38608-2739
07	46.23	1.8201	38.10	1.5001	38600-7807	38600-6607	38608-2740
08	52.58	2.0701	44.45	1.7501	38600-7808	38600-6608	38608-2741
09	58.93	2.3201	50.80	2.0001	38600-7809	38600-6609	38608-2742
10	65.28	2.5701	57.15	2.2501	38600-7810	38600-6610	38608-2743
11	71.63	2.8201	63.50	2.5001	38600-7811	38600-6611	38608-2744
12	77.98	3.0701	69.85	2.7501	38600-7812	38600-6612	38608-2745
13	84.33	3.3201	76.20	3.0001	38600-7813	38600-6613	38608-2746
14	90.68	3.5701	82.55	3.2501	38600-7814	38600-6614	38608-2747
15	97.03	3.8201	88.90	3.5001	38600-7815	38600-6615	38608-2748
16	103.38	4.0701	95.25	3.7501	38600-7816	38600-6616	38608-2749
17	109.73	4.3201	101.60	4.0001	38600-7817	38600-6617	38608-2750
18	116.08	4.5701	107.95	4.2501	38600-7818	38600-6619	38608-2751
19	122.43	4.8201	114.30	4.5001	38600-7819	38600-6619	38608-2752
20	128.78	5.0701	120.65	4.7501	38600-7820	38600-6620	38608-2753
21	135.13	5.3201	127.00	5.0001	38600-7821	38600-6621	38608-2754
22	141.48	5.5701	133.35	5.2501	38600-7822	38600-6622	38608-2755
23	147.83	5.8201	139.70	5.5001	38600-7823	38600-6623	38608-2756
24	154.18	6.0701	146.05	5.7501	38600-7824	38600-6624	38608-2757
25	160.53	6.3201	152.40	6.0001	38600-7825	38600-6625	38608-2758
26	166.88	6.5701	158.75	6.2501	38600-7826	38600-6626	38608-2759
27	173.23	6.8201	165.10	6.5001	38600-7827	38600-6627	38608-2760
28	179.58	7.0701	171.45	6.7501	38600-7828	38600-6628	38608-2761
29	185.93	7.3201	177.80	7.0001	38600-7829	38600-6629	38608-2762
30	192.28	7.5701	184.15	7.2501	38600-7830	38600-6630	38608-2763
31	198.63	7.8201	190.50	7.5001	38600-7831	38600-6631	38608-2764
32	204.98	8.0701	196.85	7.7501	38600-7832	38600-6632	38608-2765

EC NO. SEE SHEET DRAWN BY: ONE CHK'D BY: APPR'D BY: REV:	QUALITY SYMBOLS MAJOR CRITICAL SPC S	GENERAL TOLERANCES: (UNLESS SPECIFIED) mm INCH 4 PLACES ±0.038 ±0.015 3 PLACES ±0.038 ±0.005 2 PLACES ±0.13 ±0.01 1 PLACE ±0.3 ±0.1 ANGULAR ±2°	SCALE 3:1 DESIGN UNITS <input type="checkbox"/> mm <input checked="" type="checkbox"/> INCH THIRD ANGLE PROJECTION	PROJECT NO. DIMENSIONS: <input checked="" type="checkbox"/> mm <input type="checkbox"/> INCH <input type="checkbox"/> mm ONLY	SMT REV REVISE ON CAD ONLY

DRAFT WHERE APPLICABLE MUST REMAIN WITHIN DIMENSIONS

THIS DRAWING CONTAINS INFORMATION THAT IS PROPRIETARY TO MOLEX INCORPORATED AND SHOULD NOT BE USED WITHOUT WRITTEN PERMISSION.

10 9 8 7 6 5 4 3 2 1