



Distributor of Molex Connector Corporation: Excellent Integrated System Limited
Datasheet of 0386007811 - Connector Barrier Block Strip 11 Circuit 0.250" (6.35mm)

Contact us: sales@integrated-circuit.com Website: www.integrated-circuit.com

Excellent Integrated System Limited

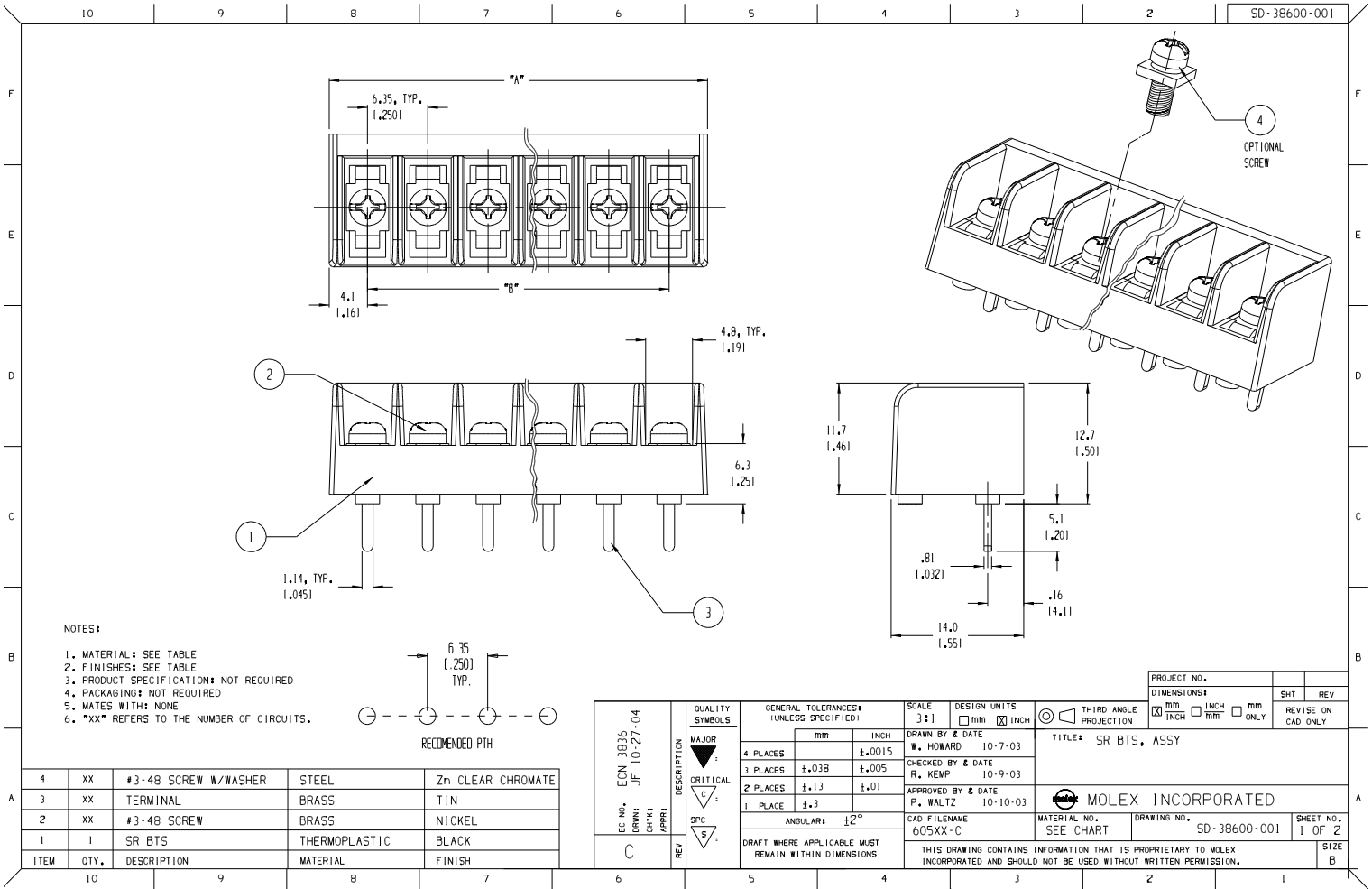
Stocking Distributor

Click to view price, real time Inventory, Delivery & Lifecycle Information:

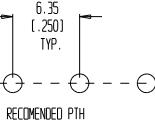
[Molex Connector Corporation](#)
[0386007811](#)

For any questions, you can email us directly:

sales@integrated-circuit.com



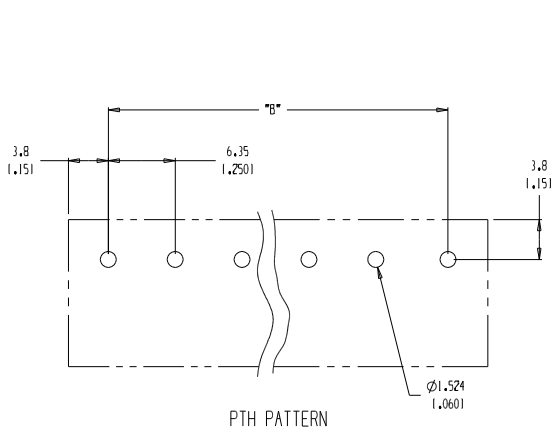
- NOTES:
1. MATERIAL: SEE TABLE
 2. FINISHES: SEE TABLE
 3. PRODUCT SPECIFICATION: NOT REQUIRED
 4. PACKAGING: NOT REQUIRED
 5. MATES WITH: NONE
 6. "XX" REFERS TO THE NUMBER OF CIRCUITS.



ITEM	QTY.	DESCRIPTION	MATERIAL	FINISH
4	XX	#3-48 SCREW W/WASHER	STEEL	Zn CLEAR CHROMATE
3	XX	TERMINAL	BRASS	TIN
2	XX	#3-48 SCREW	BRASS	NICKEL
1	1	SR BTS	THERMOPLASTIC	BLACK

EC NO.	ECN	DRAWN	CHK'D	APPROV	DESCRIPTION	QUALITY SYMBOLS	GENERAL TOLERANCES: (UNLESS SPECIFIED)		SCALE	DESIGN UNITS	THIRD ANGLE PROJECTION	DIMENSIONS:			SHEET	REV
							mm	INCH				mm	INCH	mm ONLY		
C	3836	JF	10-27-04				4 PLACES	±.0015	3:1	INCH	THIRD ANGLE PROJECTION	mm	INCH	mm ONLY		
						MAJOR	3 PLACES	±.03B		mm						
						CRITICAL	2 PLACES	±.13								
						SPEC	1 PLACE	±.3								
						ANGULAR		±2°								
							DRAFT WHERE APPLICABLE MUST REMAIN WITHIN DIMENSIONS				THIS DRAWING CONTAINS INFORMATION THAT IS PROPRIETARY TO MOLEX INCORPORATED AND SHOULD NOT BE USED WITHOUT WRITTEN PERMISSION.					
							DRAWN BY & DATE			TITLE: SR BTS, ASSY		MOLEX INCORPORATED				
							CHECKED BY & DATE			MATERIAL NO. SEE CHART		DRAWING NO. SD-38600-001				
							APPROVED BY & DATE			CAD FILENAME 605XX-C		SHEET NO. 1 OF 2				
							P. WALTZ 10-10-03			SIZE B						

10 9 8 7 6 5 4 3 2 SD-38600-001



NUMBER OF CIRCUITS "XX"	DIM. "A"		DIM. "B"		MATERIAL NO. (OPT -C, -50)	MATERIAL NO. (OPT -C)	MATERIAL NO. (INSULATOR)
02	14.48	1.5701	6.35	1.2501	38600-7802	38600-6602	38608-2735
03	20.83	1.8201	12.70	1.5001	38600-7803	38600-6603	38608-2736
04	27.18	1.0701	19.05	1.7501	38600-7804	38600-6604	38608-2737
05	33.53	1.3201	25.40	1.0001	38600-7805	38600-6605	38608-2738
06	39.88	1.5701	31.75	1.2501	38600-7806	38600-6606	38608-2739
07	46.23	1.8201	38.10	1.5001	38600-7807	38600-6607	38608-2740
08	52.58	2.0701	44.45	1.7501	38600-7808	38600-6608	38608-2741
09	58.93	2.3201	50.80	2.0001	38600-7809	38600-6609	38608-2742
10	65.28	2.5701	57.15	2.2501	38600-7810	38600-6610	38608-2743
11	71.63	2.8201	63.50	2.5001	38600-7811	38600-6611	38608-2744
12	77.98	3.0701	69.85	2.7501	38600-7812	38600-6612	38608-2745
13	84.33	3.3201	76.20	3.0001	38600-7813	38600-6613	38608-2746
14	90.68	3.5701	82.55	3.2501	38600-7814	38600-6614	38608-2747
15	97.03	3.8201	88.90	3.5001	38600-7815	38600-6615	38608-2748
16	103.38	4.0701	95.25	3.7501	38600-7816	38600-6616	38608-2749
17	109.73	4.3201	101.60	4.0001	38600-7817	38600-6617	38608-2750
18	116.08	4.5701	107.95	4.2501	38600-7818	38600-6619	38608-2751
19	122.43	4.8201	114.30	4.5001	38600-7819	38600-6619	38608-2752
20	128.78	5.0701	120.65	4.7501	38600-7820	38600-6620	38608-2753
21	135.13	5.3201	127.00	5.0001	38600-7821	38600-6621	38608-2754
22	141.48	5.5701	133.35	5.2501	38600-7822	38600-6622	38608-2755
23	147.83	5.8201	139.70	5.5001	38600-7823	38600-6623	38608-2756
24	154.18	6.0701	146.05	5.7501	38600-7824	38600-6624	38608-2757
25	160.53	6.3201	152.40	6.0001	38600-7825	38600-6625	38608-2758
26	166.88	6.5701	158.75	6.2501	38600-7826	38600-6626	38608-2759
27	173.23	6.8201	165.10	6.5001	38600-7827	38600-6627	38608-2760
28	179.58	7.0701	171.45	6.7501	38600-7828	38600-6628	38608-2761
29	185.93	7.3201	177.80	7.0001	38600-7829	38600-6629	38608-2762
30	192.28	7.5701	184.15	7.2501	38600-7830	38600-6630	38608-2763
31	198.63	7.8201	190.50	7.5001	38600-7831	38600-6631	38608-2764
32	204.98	8.0701	196.85	7.7501	38600-7832	38600-6632	38608-2765

EC. NO. 1 DRAWN BY CHY/KI CHECKED BY APPROVED BY	DESCRIPTION REV	QUALITY SYMBOLS MAJOR CRITICAL SPC	GENERAL TOLERANCES (UNLESS SPECIFIED)		SCALE 3:1	DESIGN UNITS <input type="checkbox"/> mm <input checked="" type="checkbox"/> INCH	THIRD ANGLE PROJECTION	PROJECT NO.	SMT	REV									
			<table border="1"> <tr><th colspan="2">DIMENSIONS</th></tr> <tr><td>4 PLACES</td><td>±0.015</td></tr> <tr><td>3 PLACES</td><td>±0.038</td></tr> <tr><td>2 PLACES</td><td>±0.13</td></tr> <tr><td>1 PLACE</td><td>±0.3</td></tr> </table>		DIMENSIONS		4 PLACES	±0.015	3 PLACES	±0.038	2 PLACES	±0.13	1 PLACE	±0.3	DRAWN BY & DATE W. HOWARD 10-7-03		CHECKED BY & DATE R. KEMP 10-9-03		APPROVED BY & DATE P. WALTZ 10-10-03
DIMENSIONS																			
4 PLACES	±0.015																		
3 PLACES	±0.038																		
2 PLACES	±0.13																		
1 PLACE	±0.3																		
DRAFT WHERE APPLICABLE MUST REMAIN WITHIN DIMENSIONS			ANGULAR 1 ±2°		CAD FILENAME 605XX-C		MATERIAL NO. SEE CHART		DRAWING NO. SD-38600-001										
THIS DRAWING CONTAINS INFORMATION THAT IS PROPRIETARY TO MOLEX INCORPORATED AND SHOULD NOT BE USED WITHOUT WRITTEN PERMISSION.								SHEET NO. 2 OF 2		SIZE B									

10 9 8 7 6 5 4 3 2 1