



Distributor of Molex Connector Corporation: Excellent Integrated System Limited
Datasheet of 0386906611 - Connector Barrier Block Strip 11 Circuit 0.325" (8.26mm)

Contact us: sales@integrated-circuit.com Website: www.integrated-circuit.com

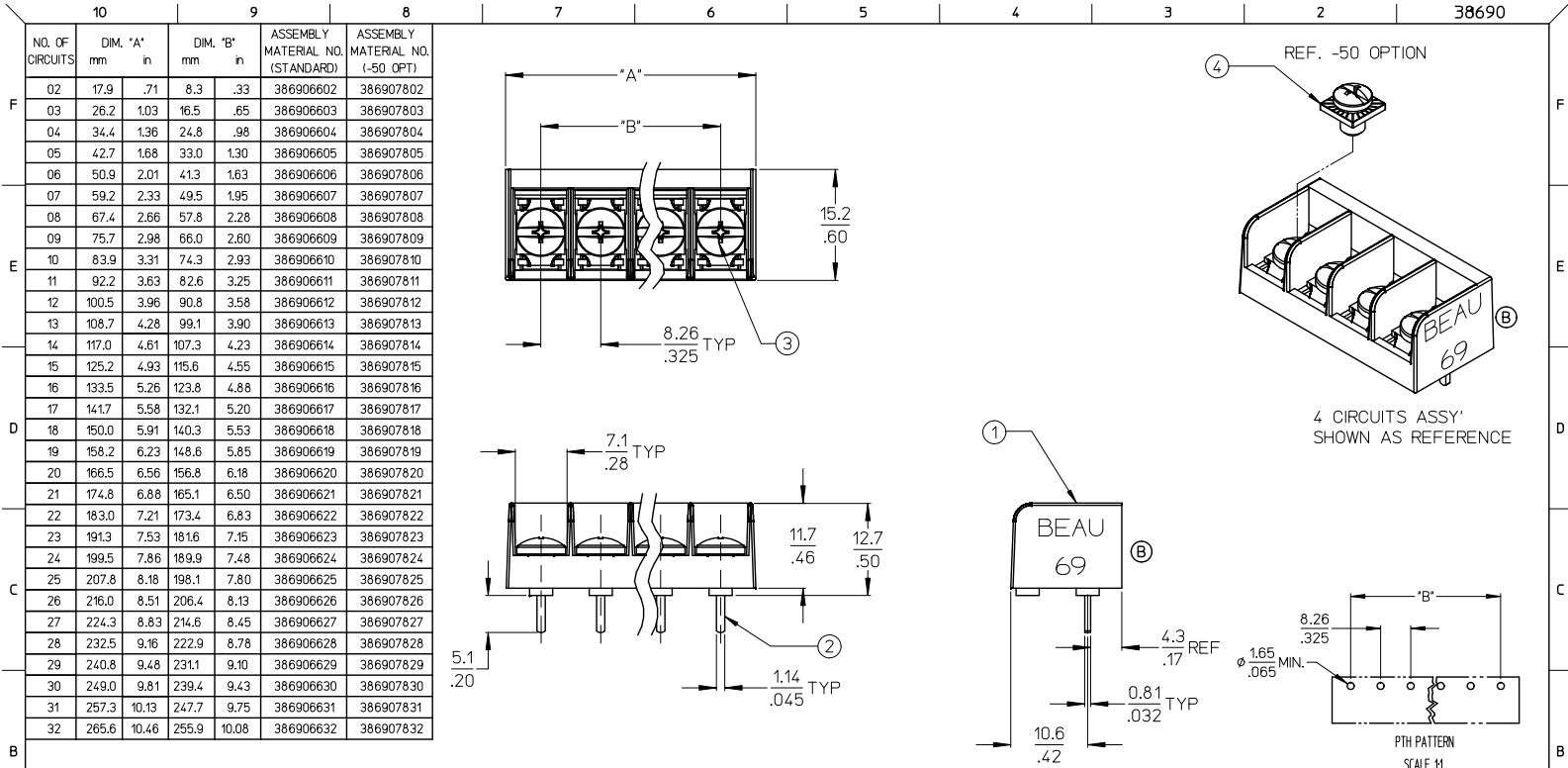
Excellent Integrated System Limited

Stocking Distributor

Click to view price, real time Inventory, Delivery & Lifecycle Information:

[Molex Connector Corporation](#)
[0386906611](#)

For any questions, you can email us directly:
sales@integrated-circuit.com



NOTES:
 1. MATERIAL: SEE TABLE
 2. FINISHES: SEE TABLE.
 3. "XX" REFERS TO THE QUANTITY OF CIRCUITS.
 4. ROHS COMPLIANT.

QTY.	DESCRIPTION	MATERIAL	FINISH
4	SCREW #6-32X.155 PAN PHSLZN/BR/STEEL -50 OPT	STEEL	ZN. CLEAR CHROMATE
3	SCREW #6-32X.160 PAN PHSLN/BRASS (STANDARD)	BRASS	NICKEL PLATE
2	TERMINAL, PC	BRASS	TIN PLATE
1	INSULATOR	POLYESTER (PBT)	BLACK

REVISION	DESCRIPTION	QUALITY SYMBOLS
B	REMOVE "USA" EC NO: IP522012-0967 DRAWN: JENC INAS 2012/05/31 CHKD: JMACNE IL 2012/05/31 APPR: JMACNE IL 2012/06/01	QUALITY SYMBOLS ▽=0 ▽=0

GENERAL TOLERANCES (UNLESS SPECIFIED)	
mm	INCH
4 PLACES ± .005	± .0005
3 PLACES ± .01	± .001
2 PLACES ± .03	± .003
1 PLACE ± .03	± .003
ANGULAR ± 2°	

DIMENSION STYLE	
MM/IN	SCALE
DRAWN BY AHIDALGO	DATE 2007/04/02
CHECKED BY JENC INAS	DATE 2007/04/02
APPROVED BY JMACNE IL	DATE 2012/06/01
MATERIAL NO.	DOCUMENT NO.
SEE CHART	SD-38690-001

TITLE		DESIGN UNITS		THIRD ANGLE PROJECTION	
INCH		INCH		THIRD ANGLE PROJECTION	
8.26/.325 SR TRI-BARRIER TERMINAL STRIP CS, PC ASSY					
MOLEX INCORPORATED				SHEET NO. 1 OF 1	
THIS DRAWING CONTAINS INFORMATION THAT IS PROPRIETARY TO MOLEX INCORPORATED AND SHOULD NOT BE USED WITHOUT WRITTEN PERMISSION					