



Distributor of Molex Connector Corporation: Excellent Integrated System Limited

Datasheet of 0387300111 - Connector Barrier Block Strip 11 Circuit 0.438" (11.12mm)

Contact us: sales@integrated-circuit.com Website: www.integrated-circuit.com

Excellent Integrated System Limited

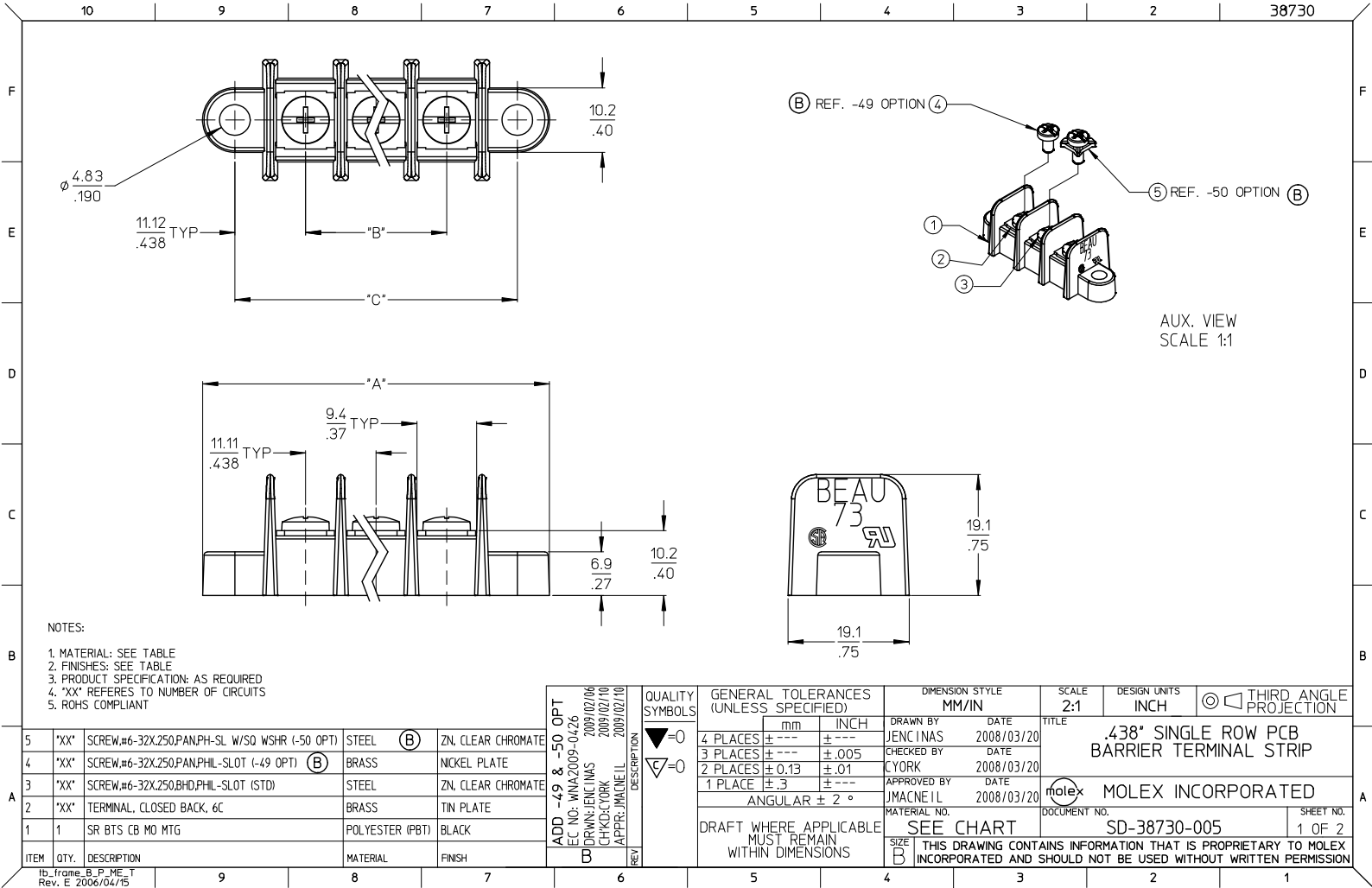
Stocking Distributor

Click to view price, real time Inventory, Delivery & Lifecycle Information:

[Molex Connector Corporation](#)
[0387300111](#)

For any questions, you can email us directly:

sales@integrated-circuit.com



10 9 8 7 6 5 4 3 2 38730

| NUMBER OF CIRCUITS | "A" DIM. | "B" DIM. | "C" DIM. | MATERIAL NO. (STD) | MATERIAL NO. (-49) (B) | MATERIAL NO. (-50) (B) |
|--------------------|-----------------|-----------------|-----------------|--------------------|------------------------|------------------------|
| 02 | 43.51 [1.713] | 11.12 [.438] | 33.35 [1.313] | 387300102 | 387300702 | 387301302 |
| 03 | 54.62 [2.150] | 22.21 [.874] | 44.50 [1.752] | 387300103 | 387300703 | 387301303 |
| 04 | 65.73 [2.587] | 33.30 [1.311] | 55.63 [2.190] | 387300104 | 387300704 | 387301304 |
| 05 | 76.84 [3.024] | 44.39 [1.748] | 66.75 [2.628] | 387300105 | 387300705 | 387301305 |
| 06 | 87.95 [3.461] | 55.48 [2.185] | 77.88 [3.066] | 387300106 | 387300706 | 387301306 |
| 07 | 99.06 [3.898] | 66.58 [2.622] | 89.00 [3.504] | 387300107 | 387300707 | 387301307 |
| 08 | 110.17 [4.335] | 77.66 [3.059] | 100.13 [3.942] | 387300108 | 387300708 | 387301308 |
| 09 | 121.28 [4.772] | 88.75 [3.496] | 111.25 [4.380] | 387300109 | 387300709 | 387301309 |
| 10 | 132.39 [5.209] | 99.84 [3.933] | 122.38 [4.818] | 387300110 | 387300710 | 387301310 |
| 11 | 143.50 [5.646] | 110.94 [4.370] | 133.50 [5.256] | 387300111 | 387300711 | 387301311 |
| 12 | 154.61 [6.083] | 122.02 [4.807] | 144.63 [5.694] | 387300112 | 387300712 | 387301312 |
| 13 | 165.72 [6.520] | 133.12 [5.244] | 155.75 [6.132] | 387300113 | 387300713 | 387301313 |
| 14 | 176.83 [6.957] | 144.20 [5.681] | 166.88 [6.570] | 387300114 | 387300714 | 387301314 |
| 15 | 187.94 [7.394] | 155.30 [6.118] | 178.00 [7.008] | 387300115 | 387300715 | 387301315 |
| 16 | 199.05 [7.831] | 166.38 [6.555] | 189.13 [7.446] | 387300116 | 387300716 | 387301316 |
| 17 | 210.16 [8.268] | 177.48 [6.992] | 200.25 [7.884] | 387300117 | 387300717 | 387301317 |
| 18 | 221.27 [8.705] | 188.56 [7.429] | 211.38 [8.322] | 387300118 | 387300718 | 387301318 |
| 19 | 232.38 [9.142] | 199.65 [7.866] | 222.50 [8.760] | 387300119 | 387300719 | 387301319 |
| 20 | 243.49 [9.579] | 210.74 [8.303] | 233.63 [9.198] | 387300120 | 387300720 | 387301320 |
| 21 | 254.60 [10.016] | 221.84 [8.740] | 244.75 [9.636] | 387300121 | 387300721 | 387301321 |
| 22 | 265.71 [10.453] | 232.92 [9.177] | 255.88 [10.074] | 387300122 | 387300722 | 387301322 |
| 23 | 276.82 [10.890] | 244.02 [9.614] | 267.00 [10.512] | 387300123 | 387300723 | 387301323 |
| 24 | 287.93 [11.327] | 255.10 [10.051] | 278.13 [10.950] | 387300124 | 387300724 | 387301324 |
| 25 | 299.04 [11.764] | 266.20 [10.488] | 289.26 [11.388] | 387300125 | 387300725 | 387301325 |
| 26 | 310.15 [12.201] | 277.29 [10.925] | 300.38 [11.826] | 387300126 | 387300726 | 387301326 |

| | | | | | | | | |
|--|-------------------------------|---|--|------------------------------|------------------------------------|--|----------------------|---|
| SEE SHEET ONE EC NO: WNA2009-0426 DRAWN BY: JENC INAS 2008/02/06 CHECKED BY: CYORK 2008/02/10 APPR: JMACNE IL 2009/02/10 DESCRIPTION: | QUALITY SYMBOLS ▽=0 ▽=0 | GENERAL TOLERANCES (UNLESS SPECIFIED) | | DIMENSION STYLE MM/IN | | SCALE 2:1 | DESIGN UNITS INCH | THIRD ANGLE PROJECTION |
| | | 4 PLACES ± .005 3 PLACES ± .005 2 PLACES ± 0.13 1 PLACE ± .3 ANGULAR ± 2° | mm INCH ± .005 ± .005 ± .01 ± .01 ± .005 ± .005 | DRAWN BY JENC INAS | DATE 2008/03/20 | TITLE .438" SINGLE ROW PCB BARRIER TERMINAL STRIP | | |
| DRAFT WHERE APPLICABLE MUST REMAIN WITHIN DIMENSIONS | | APPROVED BY JMACNE IL | | DATE 2008/03/20 | MOLEX INCORPORATED SD-38730-005 | | | |
| | | MATERIAL NO. SEE CHART | | DOCUMENT NO. SD-38730-005 | | SHEET NO. 2 OF 2 | | THIS DRAWING CONTAINS INFORMATION THAT IS PROPRIETARY TO MOLEX INCORPORATED AND SHOULD NOT BE USED WITHOUT WRITTEN PERMISSION |

9 8 7 6 5 4 3 2 1