



Distributor of Molex Connector Corporation: Excellent Integrated System Limited
Datasheet of 0387351502 - Connector Barrier Block Strip 2 Circuit 0.438" (11.12mm)

Contact us: sales@integrated-circuit.com Website: www.integrated-circuit.com

Excellent Integrated System Limited

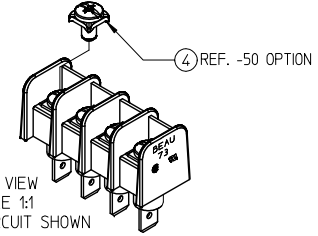
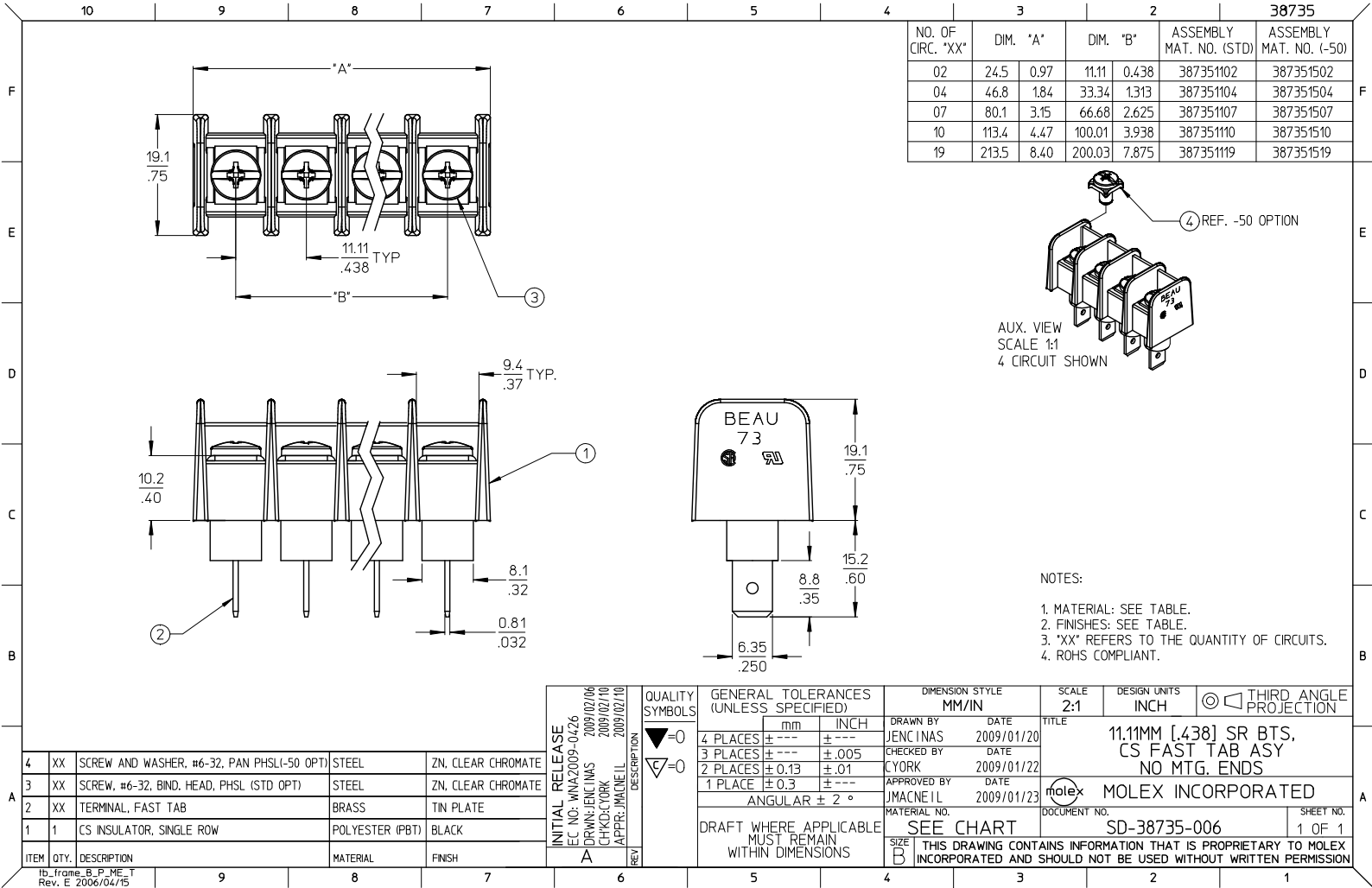
Stocking Distributor

Click to view price, real time Inventory, Delivery & Lifecycle Information:

[Molex Connector Corporation](#)
[0387351502](#)

For any questions, you can email us directly:

sales@integrated-circuit.com



NOTES:
1. MATERIAL: SEE TABLE.
2. FINISHES: SEE TABLE.
3. "XX" REFERS TO THE QUANTITY OF CIRCUITS.
4. ROHS COMPLIANT.

ITEM	QTY.	DESCRIPTION	MATERIAL	FINISH
4	XX	SCREW AND WASHER, #6-32, PAN PHSL(-50 OPT)	STEEL	ZN, CLEAR CHROMATE
3	XX	SCREW, #6-32, BIND. HEAD, PHSL (STD OPT)	STEEL	ZN, CLEAR CHROMATE
2	XX	TERMINAL, FAST TAB	BRASS	TIN PLATE
1	1	CS INSULATOR, SINGLE ROW	POLYESTER (PBT)	BLACK

QUALITY SYMBOLS	GENERAL TOLERANCES (UNLESS SPECIFIED)		DIMENSION STYLE	SCALE	DESIGN UNITS	THIRD ANGLE PROJECTION
	mm	INCH	MM/IN	2:1	INCH	
▽=0	4 PLACES ± .005	± .0005	DRAWN BY	DATE	11.11MM [.438] SR BTS, CS FAST TAB ASY NO MTG. ENDS MOLEX INCORPORATED	
▽=0	3 PLACES ± .013	± .01	JENCINAS	2009/01/20		
	2 PLACES ± 0.3	± .005	CYORK	2009/01/22		
	1 PLACE ± 0.3	± .005	JMACNEIL	2009/01/23		
	ANGULAR ± 2°		APPROVED BY		DOCUMENT NO.	
	DRAFT WHERE APPLICABLE MUST REMAIN WITHIN DIMENSIONS		MATERIAL NO.		SHEET NO.	
			SEE CHART		SD-38735-006	
			SIZE B		THIS DRAWING CONTAINS INFORMATION THAT IS PROPRIETARY TO MOLEX INCORPORATED AND SHOULD NOT BE USED WITHOUT WRITTEN PERMISSION	

1b_frame_B_P_ME_T Rev. E 2006/04/15