

## Excellent Integrated System Limited

Stocking Distributor

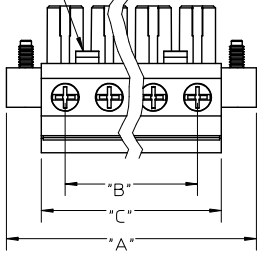
Click to view price, real time Inventory, Delivery & Lifecycle Information:

[Molex Connector Corporation](#)  
[0394220002](#)

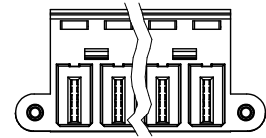
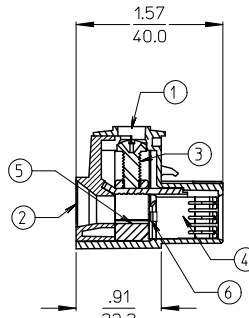
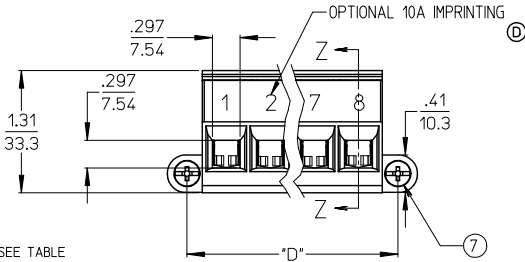
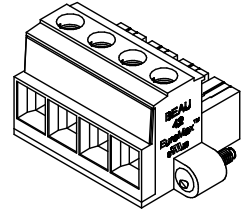
For any questions, you can email us directly:  
[sales@integrated-circuit.com](mailto:sales@integrated-circuit.com)

10 9 8 7 6 5 4 3 2 1

2 AND 3 CIRCUIT PARTS HAVE ONE LATCH DETAIL POSITIONED ON THIS END.



NO. OF CIRC.	STD. MAT. NUMBER	OPTIONAL 10A IMPRINT	"A" IN/MM	"B" IN/MM	"C" IN/MM	"D" IN/MM
02	394220002	394220002	1.73/44.0	.472/12.00	.98/25.0	1.313/33.35
03	394220003	394220003	2.20/56.0	.945/24.00	1.46/37.0	1.785/45.35
04	394220004	394220004	2.68/68.0	1.417/36.00	1.93/49.0	2.258/57.35
05	394220005	394220005	3.15/80.0	1.890/48.00	2.40/61.0	2.730/69.35
06	394220006	394220006	3.62/92.0	2.362/60.00	2.87/73.0	3.203/81.35
07	394220007	394220007	4.09/104.0	2.835/72.00	3.35/85.0	3.675/93.35
08	394220008	394220008	4.57/116.0	3.307/84.00	3.82/97.0	4.148/105.35



NOTES:

1. MATERIAL: SEE TABLE
2. FINISHES: SEE TABLE
3. PRODUCT SPECIFICATION: SEE PPS.42.002
4. IMPRINTING CHARACTER HEIGHT IS .170"
5. ROHS COMPLIANT BY EXEMPTION \*

ITEM	QTY.	DESCRIPTION	MATERIAL	FINISH	REV	DESCRIPTION	QUALITY SYMBOLS	GENERAL TOLERANCES (UNLESS SPECIFIED)	DIMENSION STYLE	SCALE	DESIGN UNITS	THIRD ANGLE PROJECTION
7	2	SCREW, MTG. END, M4, PHIL-SLOT	PHOS. BRONZE	TIN PLATE					IN/MM	4:1	INCH	
6	XX	BACK PLATE	PHOS. BRONZE	TIN PLATE								
5	XX	PRESSURE CLAMP *	BRASS	NICKEL PLATE								
4	XX	TERMINAL	COPPER ALLOY	TIN PLATE								
3	XX	SCREW, M5 PAN HEAD, POZI-SLOT	STAINLESS STEEL	TIN PLATE								
2	1	MOLDING COVER	POLYESTER (PBT)	BLACK								
1	1	MOLDING, BODY, WITH MTG ENDS	POLYESTER (PBT)	BLACK								

1b\_frame\_B IP\_ME\_T Rev. D 2004/04/02

9 8 7 6 5 4 3 2 1