

Excellent Integrated System Limited

Stocking Distributor

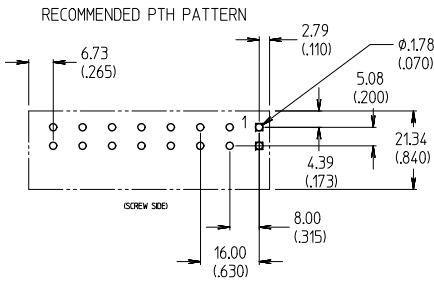
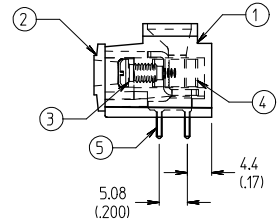
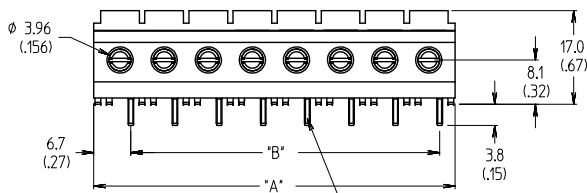
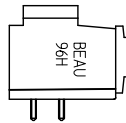
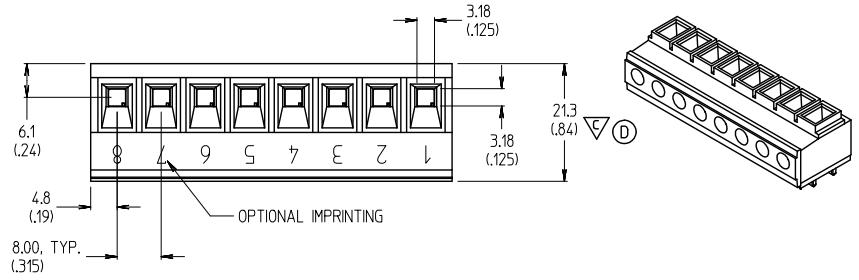
Click to view price, real time Inventory, Delivery & Lifecycle Information:

[Molex Connector Corporation](#)
[0399608207](#)

For any questions, you can email us directly:

sales@integrated-circuit.com

CIRCUIT NO. (XX)	(in.)		(mm)		MATERIAL NO.
	'B'	'A'	'B'	'A'	
02	.315	.69	8.00	17.5	399608202
03	.630	1.01	16.00	25.5	399608203
04	.945	1.32	24.00	33.5	399608204
05	1.260	1.64	32.00	41.5	399608205
06	1.575	1.95	40.00	49.5	399608206
07	1.890	2.27	48.00	57.5	399608207
08	2.205	2.58	56.00	65.5	399608208
09	2.520	2.90	64.00	73.5	399608209
10	2.835	3.21	72.00	81.5	399608210
11	3.150	3.53	80.00	89.5	399608211
12	3.465	3.84	88.00	97.5	399608212



1.0 (.04) SQUARE PC TAIL, TYPICAL, "2XX" PLACES

NOTES:

1. MATERIAL: SEE TABLE.
2. FINISHES: SEE TABLE.
3. INCH DIMS ARE SHOWN IN PARENTHESIS (XXX).
4. "XX" REFERS TO THE QUANTITY OF CIRCUITS.
5. ADDITIONAL ±.002 /INCH FOR DIM. "A" AND DIM "B".
6. ASSEMBLY IS ROHS COMPLIANT BY EXEMPTION. COMPONENTS MARKED WITH AN ASTERISK (*) ARE ROHS COMPLIANT BY EXEMPTION. ALL OTHERS ARE ROHS COMPLIANT.

ITEM	QTY.	DESCRIPTION	MATERIAL	FINISH
5	"XX"	TERMINAL, HORIZONTAL, 10AWG	COPPER	TIN PLATE
4	"XX"	CAGE, 10 AWG, M3.5 (*)	BRASS	NICKEL PLATE
3	"XX"	SCREW, M3.5x0.6x.25L	SILICON BRONZE	TIN PLATE
2	1	MOLDING, BODY	POLYESTER (PBT/PC)	BLACK
1	1	MOLDING, CAP	POLYESTER (PBT/PC)	BLACK

ADD. CTG. DIM. EC. NO.: JGG2013-1881 DRAWN: ENCLMS 2013/09/19 CHKO: MACNEIL 2013/09/19 APPR: MACNEIL 2013/09/24	QUALITY SYMBOLS ▽=0 ▽=1	GENERAL TOLERANCES (UNLESS SPECIFIED) <table border="1"> <thead> <tr> <th></th> <th>mm</th> <th>INCH</th> </tr> </thead> <tbody> <tr><td>4 PLACES</td><td>±.005</td><td>±.0005</td></tr> <tr><td>3 PLACES</td><td>±.005</td><td>±.0005</td></tr> <tr><td>2 PLACES</td><td>±0.13</td><td>±.01</td></tr> <tr><td>1 PLACE</td><td>±0.3</td><td>±.01</td></tr> </tbody> </table> ANGULAR ± 2°		mm	INCH	4 PLACES	±.005	±.0005	3 PLACES	±.005	±.0005	2 PLACES	±0.13	±.01	1 PLACE	±0.3	±.01	DIMENSION STYLE MM/IN	SCALE 3:2	DESIGN UNITS INCH	THIRD ANGLE PROJECTION
				mm	INCH																
4 PLACES	±.005	±.0005																			
3 PLACES	±.005	±.0005																			
2 PLACES	±0.13	±.01																			
1 PLACE	±0.3	±.01																			
DRAWN BY C. YORK	DATE 2009/02/02	CHECKED BY R. DEROSS	DATE 2009/02/02	TITLE 8.00/.315 SR BTS, PC, RA #10 AWG ASSY, 300V, 30A ROHS COMPLIANT																	
APPROVED BY DTITUS		DATE 2010/01/11		Molex MOLEX INCORPORATED																	
MATERIAL NO. SEE CHART		DOCUMENT NO. SD-39960-004		SHEET NO. 1 OF 1																	
DRAFT WHERE APPLICABLE MUST REMAIN WITHIN DIMENSIONS																					
THIS DRAWING CONTAINS INFORMATION THAT IS PROPRIETARY TO MOLEX INCORPORATED AND SHOULD NOT BE USED WITHOUT WRITTEN PERMISSION																					