



Excellent Integrated System Limited

Stocking Distributor

Click to view price, real time Inventory, Delivery & Lifecycle Information:

[TE Connectivity AMP Connectors
322154](#)

For any questions, you can email us directly:

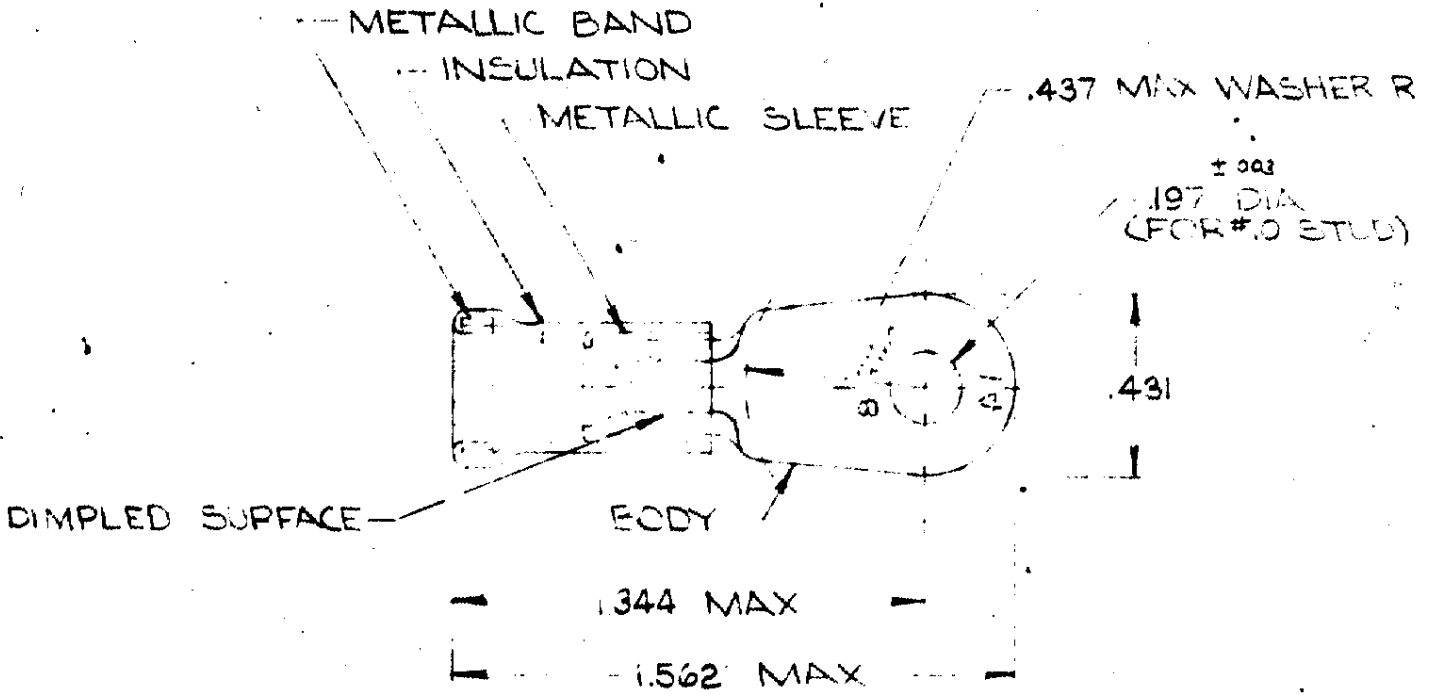
sales@integrated-circuit.com

DRAWING MADE IN AMERICAN PROJECTION

LOC **G** PRINT DIST **14**

© 1963 BY AMP INCORPORATED. ALL RIGHTS RESERVED. AMP PRODUCTS COVERED BY PATENTS AND/OR PATENTS PENDING.

REVISIONS			
LTR	DESCRIPTION	DATE	APPROVED
A	REDRAWN & REVISED	PC-556: 1-5-70	JML
B	REV G-4680	TMS 5-6-88	JT



TONGUE MATERIAL THICKNESS = .040 ± .003
 FOR .377 MAX WIRE INS. DIA

1	WIRE TERMINAL	322154	BODY: COPPER (QQ-C-576) TIN PL. (ALLOY 10737) INSULATION PVC COLOR: RED METALLIC SLEEVE COPPER (QQ-C-576) METALLIC BAND: STEEL QQ-S-208 (ASTM A 09)
QTY	DESCRIPTION	PART NO	MATERIAL & FINISH

UNLESS OTHERWISE SPECIFIED DIMENSIONS ARE IN INCHES TOLERANCES ON DECIMALS: .008 ANGLES: 5°	CONTRACT NO.		AMP INCORPORATED HARRISBURG, PENNSYLVANIA			
	DR. <i>Wayne Millhous 11-14-69</i>		NAME WIRE TERMINAL AMPLI-BOND-RING TONGUE WIRE SIZE: 8			
	CHK. <i>M. E. ...</i>	APPD. <i>Swalsh 1-7-70</i>	REL. <i>M. E. ... 1-8-70</i>	SIZE	CODE IDENT NO	NUMBER
	MATERIAL SEE TABLE	DSCN APPD.	OTHER APPD.	A	00779	322154
			SCALE	NTS	SHEET 1 OF 1	