

## **Excellent Integrated System Limited**

Stocking Distributor

Click to view price, real time Inventory, Delivery & Lifecycle Information:

[TE Connectivity AMP Connectors  
321669](#)

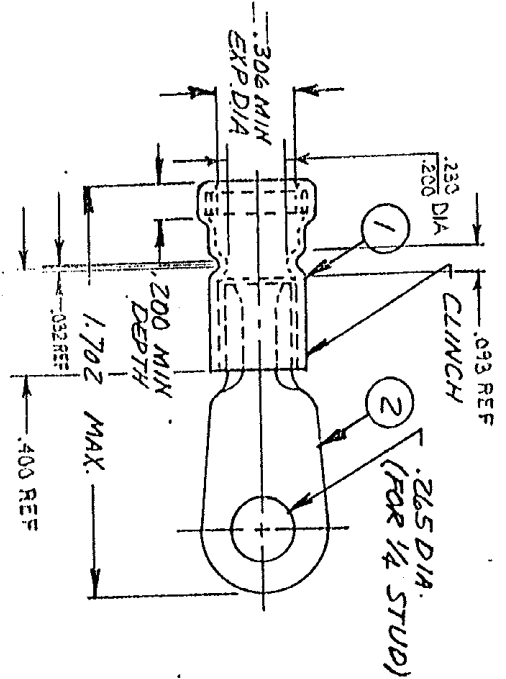
For any questions, you can email us directly:

[sales@integrated-circuit.com](mailto:sales@integrated-circuit.com)



THIS INFORMATION IS CONFIDENTIAL AND IS DISCLOSED TO YOU ON CONDITION THAT NO FURTHER DISCLOSURE IS MADE BY YOU TO OTHER THAN AMP PERSONNEL WITHOUT WRITTEN AUTHORIZATION FROM AMP INCORPORATED, HARRISBURG, PA.

DRAWING MADE IN THIRD ANGLE PROJECTION



NOTE:  
 1. ORIENT SLEEVE ON BODY BY ALIGNING THE EARS ON THE OUTSIDE OF SLEEVE AS PARALLEL AS POSSIBLE WITH THE TONGUE OF THE BODY BEFORE CLINCHING.  
 2. BAND TO BE COVERED, APPROX AS SHOWN, AFTER TUCK IS MADE.

LOC	REV	DATE	BY	CHKD	APP'D	REVISION RECORD
1	T	REV 10/20-0254-93				
5	R	REV PER Q-5049				
6	R	Q862-16-2581 REV G-4617				
7	P	D-11/19/87				
8	N	REV PER P-8965				
9	M	REV PER P-8965				

REV	DATE	BY	CHKD	APP'D	REVISION RECORD
1	10/20/93				
5					
6					
7					
8					
9					

QTY	REQD	PER	ASSY	DESCRIPTION
1	1	1	1	TAPE SPEC
1	1	1	1	BODY
1	1	1	1	SLEEVE ASSY

MATERIAL	HEAT TREAT	REVISION OF EACH ASSY NO (WHEN BLANK)	PARTS LIST
115-11001			TAPE SPEC
321665			BODY
25803-3			SLEEVE ASSY

AMP 3306 REV 8-78

8 7 6 5 4 3 2

OBSOLETE

US