



Distributor of NorComp : Excellent Integrated System Limited

Datasheet of 184-009-292-001 - D-Sub Connector Receptacle, Female Sockets 9 Position Free Hanging (In-Line) IDC, Ribbon Cable

Contact us: sales@integrated-circuit.com Website: www.integrated-circuit.com

Excellent Integrated System Limited

Stocking Distributor

Click to view price, real time Inventory, Delivery & Lifecycle Information:

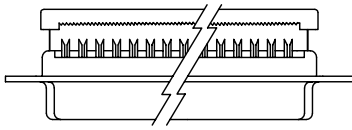
[NorComp](#)

[184-009-292-001](#)

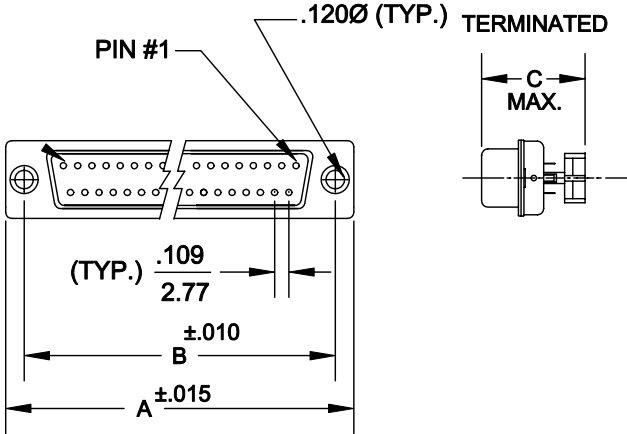
For any questions, you can email us directly:

sales@integrated-circuit.com

DESCRIPTION: LOW PROFILE FLAT RIBBON CONNECTOR



	A	B	C NO S/R	C WITH S/R
9	1.213 30.81	.984 25.00	.610 15.49	.730 18.54
15	1.541 39.14	1.312 33.33	.610 15.49	.730 18.54
25	2.088 53.04	1.852 47.04	.610 15.49	.730 18.54
37	2.729 69.32	2.500 63.50	.610 15.49	.730 18.54



184-XXX-X92-XX1

SERIES _____
 POSITIONS _____
 009 _____
 015 _____
 025 _____
 037 _____
 050 _____
 GENDER _____
 1 = MALE
 2 = FEMALE
 TERMINATION _____
 9 = IDC
 SHELL PLATING _____
 2 = TIN/ZINC
 HARDWARE OPTIONS _____
 00 = NO HARDWARE
 01 = .065 4-40 CLINCH NUT BOARD SIDE
 02 = .250 4-40 CLINCH NUT BOARD SIDE
 03 = .250 4-40 CLINCH NUT MATING SIDE
 PLATING OPTIONS _____
 1 = GOLD FLASH

SPECIFICATIONS:

MATERIALS:

SHELL: STEEL, TIN OR ZINC PLATED
 INSULATOR: UL 94V-0 RATED PBT
 +30% FIBER-GLASS OR NYLON-66

ACCEPTS: 28 AWG SOLID OR STRANDED .050" CENTER FLAT RIBBON CABLE

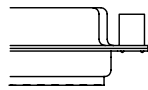
ELECTRICALS:

CURRENT RATING: 1 AMP
 CONTACT RESISTANCE: 15 mOHMS MAX
 INSULATOR RESISTANCE: 1000 MOHMS MIN
 VOLTAGE: 500V AC FOR 1 MINUTE
 TEMPERATURE: -50°C TO +100°C

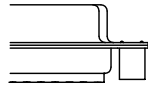
	THESE DRAWINGS AND SPECIFICATIONS ARE THE PROPERTY OF NorComp AND SHALL NOT BE REPRODUCED, COPIED OR USED AS THE BASIS FOR THE MANUFACTURE OF SALE OF APPARATUS WITHOUT WRITTEN PERMISSION.	DRAWN: WAYNE ROBBINS	DATE: 9-28-98
	NorComp	CHECKED:	DATE:
SCALE: 1:1		SHEET 1 OF 1	REV 4
		DWG NO. 184-XXX-292-XX1	

DESCRIPTION: CLINCH NUT HARDWARE

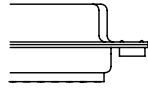
ALL CLINCH-NUTS ARE 4-40 INTERNAL THREADS



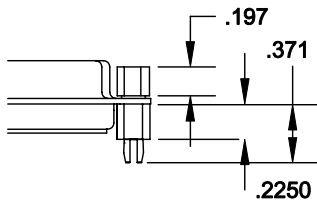
03X..... .250" (MATING SIDE) - CN8



02X250" (BOARD SIDE) - CN2




01X065" (BOARD SIDE) - CN1



91X225" (BOARD SIDE) - .197 MATING SIDE - CN10/SFS0440

NOTE: 4-40 FEMALE SCREW LOCK IS REMOVABLE

	THESE DRAWINGS AND SPECIFICATIONS ARE THE PROPERTY OF NorComp AND SHALL NOT BE REPRODUCED, COPIED OR USED AS THE BASIS FOR THE MANUFACTURE OF SALE OF APPARATUS WITHOUT WRITTEN PERMISSION.		DRAWN: WAYNE ROBBINS	DATE: 8-23-98
	<h1>NorComp</h1>		CHECKED: PAM JENKINS	DATE: 8-24-98
SCALE:			SHEET 1 OF 1	REV 3
DWG NO.		CLINCH-NUT OPTIONS		