

Excellent Integrated System Limited

Stocking Distributor

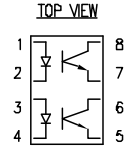
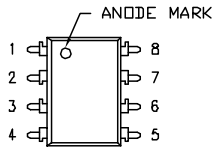
Click to view price, real time Inventory, Delivery & Lifecycle Information:

[Lumex, Inc.](#)
[OCP-PCT218/E-TR](#)

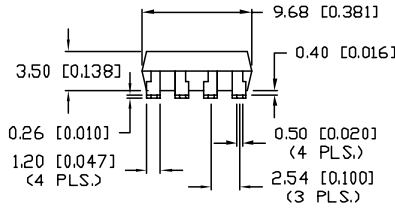
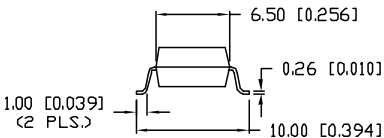
For any questions, you can email us directly:
sales@integrated-circuit.com

UNCONTROLLED DOCUMENT

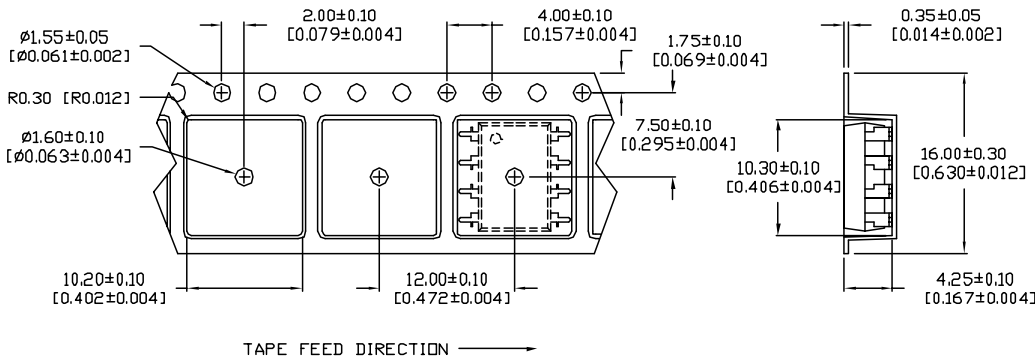
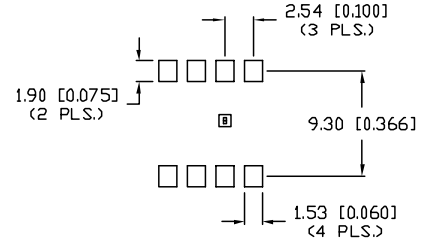
| | | |
|-----------------|-------------------------------------|---------|
| PART NUMBER | | REV. |
| OCP-PCT218/E-TR | | C |
| REV. | E.C.N. NUMBER AND REVISION COMMENTS | DATE |
| A | E.C.N. #10BRDR. & #10776. | 8.16.01 |
| B | E.C.N. #10815. | 12.3.01 |
| C | E.C.N. #11148. | 5.16.07 |



- NOTES:
- 1,3. ANODE
 - 2,4. CATHODE
 - 5,7. EMITTER
 - 6,8. COLLECTOR



RECOMMENDED SOLDER PAD LAYOUT



*UNLESS OTHERWISE SPECIFIED TOLERANCES PER DECIMAL PRECISION ARE: X=±1 (±0.039), XX=±0.5 (±0.020), XXX=±0.25 (±0.010), XXXX=±0.127 (±0.005). LEAD SIZE=±0.05 (±0.002), LEAD LENGTH=±0.75 (±0.030), MIN.=+DECIMAL PRECISION -0.00, MAX.=+0.00 -DECIMAL PRECISION

UNCONTROLLED DOCUMENT

| | | | |
|--|--------------------------------|--|--|
| REV. C | PART NUMBER OCP-PCT218/E-TR | <p>CONFIDENTIAL INFORMATION</p> <p>THE INFORMATION CONTAINED IN THIS DOCUMENT IS THE PROPERTY OF LUMEX INC. EXCEPT AS SPECIALLY AUTHORIZED IN WRITING BY LUMEX INC., THE HOLDER OF THIS DOCUMENT SHALL KEEP ALL INFORMATION CONTAINED HEREIN CONFIDENTIAL AND SHALL PROTECT SAME IN WHOLE OR IN PART FROM DISCLOSURE AND DISSEMINATION TO ALL THIRD PARTIES.</p> <p>RELIABILITY NOTE</p> <p>OUR MANY YEARS OF EXPERIENCE DATA ACCUMULATION INDICATE THAT SOLDER HEAT IS A MAJOR CAUSE OF EARLY AND FUTURE FAILURE. PLEASE PAY ATTENTION TO YOUR SOLDERING PROCESS.</p> | <p>290 E. HELEN ROAD PALATINE, IL 60067-6976 PHONE: +1.847.359.2790 US WEB: www.lumex.com TW WEB: www.lumex.com.tw</p> |
| EIGHT PIN SURFACE MOUNT DUAL CHANNEL PHOTOCOUPLER, TRANSISTOR OUTPUT WITHOUT EXTERNAL BASE CONNECTION. | | DRAWN BY: JC CHECKED BY: APPROVED BY: | DATE: 9.29.99 PAGE: 1 OF 2 SCALE: N/A |

UNCONTROLLED DOCUMENT

| | | |
|-----------------|-------------------------------------|------|
| PART NUMBER | | REV. |
| OCP-PCT218/E-TR | | C |
| REV. | E.C.N. NUMBER AND REVISION COMMENTS | DATE |
| SEE PAGE #1 | | |

| ELECTRO-OPTICAL CHARACTERISTICS (Ta=25°C) | | | | | | |
|---|----------------------|--|--------------------|------------------|------------------|-------|
| PARAMETER | SYMBOL | CONDITIONS | MIN | TYP | MAX | UNITS |
| I FORWARD VOLTAGE | V _F | I _F =20mA | - | 1.2 | 1.4 | V |
| PEAK FORWARD VOLTAGE | V _{FM} | I _{FM} =0.5A | - | - | 3.5 | V |
| REVERSE CURRENT | I _R | V _R =4V | - | - | 10 | μA |
| TERMINAL CAPACITANCE | C _t | V=0, f=1kHz | - | 30 | - | pF |
| Q COLLECTOR DARK CURRENT | I _{CEO} | V _{CE} =20V | - | - | 10 ⁻⁷ | A |
| T CURRENT TRANSFER RATIO | CRT | I _F =2mA, V _{CE} =5V | 60 | - | 600 | % |
| COLLECTOR-EMITTER SATURATION VOLTAGE | V _{CE(sat)} | I _F =20mA, I _C =1mA | - | 0.1 | 0.3 | V |
| ISOLATION RESISTANCE | R _{iso} | DC500V | 5x10 ¹⁰ | 10 ¹¹ | - | ohm |
| FLOATING CAPACITANCE | C _f | V=0, f=1MHz | - | 0.6 | 1.0 | pF |
| CUT-OFF FREQUENCY | f _c | V _{CE} =5V, I _C =2mA, R _L =100ohm | - | 80 | - | kHz |
| RESPONSE TIME (RISE) | t _r | V _{CE} =5V, I _C =2mA, R _L =100ohm | - | 5 | 20 | μS |
| RESPONSE TIME (FALL) | t _f | V _{CE} =5V, I _C =2mA, R _L =100ohm | - | 4 | 20 | μS |

I=INPUT, O=OUTPUT, T=TRANSFER CHARACTERISTICS.

| ABSOLUTE MAXIMUM RATINGS (Ta=25°C) | | | | |
|------------------------------------|------------------|-------------|-------------|--|
| PARAMETER | SYMBOL | MAX | UNITS | |
| I FORWARD CURRENT | I _F | 50 | mA | |
| PEAK FORWARD CURRENT | I _{FM} | 1 | A | |
| REVERSE VOLTAGE | V _R | 6 | V | |
| POWER DISSIPATION | P _D | 70 | mW | |
| O COLLECTOR-EMITTER VOLTAGE | V _{CEO} | 60 | V | |
| EMITTER-COLLECTOR VOLTAGE | V _{ECO} | 6 | V | |
| COLLECTOR CURRENT | I _C | 50 | mA | |
| COLLECTOR POWER DISSIPATION | P _C | 150 | mW | |
| TOTAL POWER DISSIPATION | P _{tot} | 200 | mW | |
| ISOLATION VOLTAGE 1 MIN. | V _{iso} | 5000 | V RMS | |
| OPERATING TEMPERATURE | T _{opr} | -30 TO +100 | °C | |
| STORAGE TEMPERATURE | T _{stg} | -55 TO +125 | °C | |
| SOLDERING TEMPERATURE | T _{sol} | +260 | °C | |
| 2.0mm FROM BODY | | | 10 SEC. MAX | |

I=INPUT, O=OUTPUT.

UNCONTROLLED DOCUMENT

*UNLESS OTHERWISE SPECIFIED TOLERANCES PER DECIMAL PRECISION ARE: X=±1 (+0.039), XX=±0.5 (+0.020), XXX=±0.25 (+0.010), XXXX=±0.127 (+0.005). LEAD SIZE=±0.05 (+0.002), LEAD LENGTH=±0.75 (+0.030), MIN=+DECIMAL PRECISION MAX=-DECIMAL PRECISION

| | | | | |
|--|--------------------------------|---|--|---|
| REV. C | PART NUMBER OCP-PCT218/E-TR | <p>CONFIDENTIAL INFORMATION THE INFORMATION CONTAINED IN THIS DOCUMENT IS THE PROPERTY OF LUMEX INC. EXCEPT AS SPECIFICALLY AUTHORIZED IN WRITING BY LUMEX INC., THE HOLDER OF THIS DOCUMENT SHALL KEEP ALL INFORMATION CONTAINED HEREIN CONFIDENTIAL AND SHALL PROTECT SAME IN WHOLE OR IN PART FROM DISCLOSURE AND DISSEMINATION TO ALL THIRD PARTIES.</p> <p>RELIABILITY NOTE OUR MANY YEARS OF EXPERIENCE DATA ACCUMULATION INDICATE THAT SOLDER HEAT IS A MAJOR CAUSE OF EARLY AND FUTURE FAILURE. PLEASE PAY ATTENTION TO YOUR SOLDERING PROCESS.</p> | <p>290 E. HELEN ROAD PALATINE, IL 60067-6976 PHONE: +1.847.359.2790 US WEB: www.lumex.com TW WEB: www.lumex.com.tw</p> | <p>DRAWN BY: jc</p> <p>CHECKED BY:</p> <p>APPROVED BY:</p> <p>DATE: 9.29.99 PAGE: 1 OF 2 SCALE: N/A</p> |
| EIGHT PIN SURFACE MOUNT DUAL CHANNEL PHOTOCOUPLER, TRANSISTOR OUTPUT WITHOUT EXTERNAL BASE CONNECTION. | | | | |