

Excellent Integrated System Limited

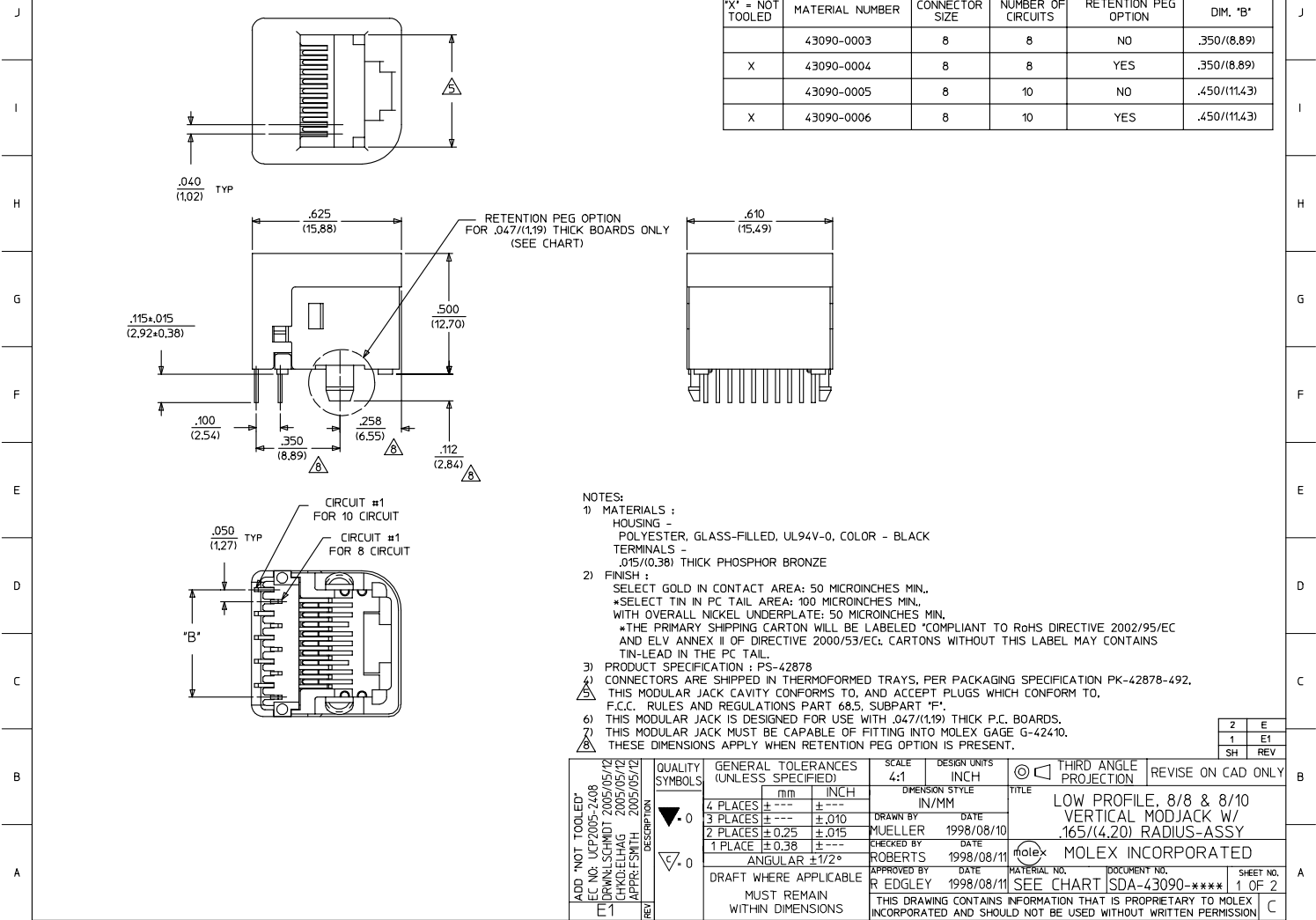
Stocking Distributor

Click to view price, real time Inventory, Delivery & Lifecycle Information:

[Molex Connector Corporation](#)
[43090-0003](#)

For any questions, you can email us directly:
sales@integrated-circuit.com

13 12 11 10 9 8 7 6 5 4 3 2 43090



X = NOT TOOLED	MATERIAL NUMBER	CONNECTOR SIZE	NUMBER OF CIRCUITS	RETENTION PEG OPTION	DIM. 'B'
	43090-0003	8	8	NO	.350/(8.89)
X	43090-0004	8	8	YES	.350/(8.89)
	43090-0005	8	10	NO	.450/(11.43)
X	43090-0006	8	10	YES	.450/(11.43)

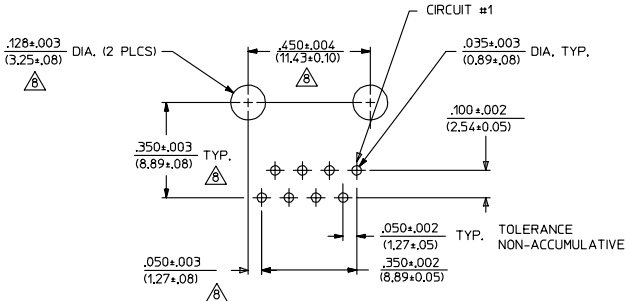
NOTES:

- 1) MATERIALS :**
HOUSING - POLYESTER, GLASS-FILLED, UL94V-0, COLOR - BLACK
TERMINALS - .015/(0.38) THICK PHOSPHOR BRONZE
- 2) FINISH :**
SELECT GOLD IN CONTACT AREA: 50 MICROINCHES MIN.
*SELECT TIN IN PC TAIL AREA: 100 MICROINCHES MIN.
WITH OVERALL NICKEL UNDERPLATE: 50 MICROINCHES MIN.
*THE PRIMARY SHIPPING CARTON WILL BE LABELED *COMPLIANT TO RoHS DIRECTIVE 2002/95/EC AND ELV ANNEX II OF DIRECTIVE 2000/53/EC; CARTONS WITHOUT THIS LABEL MAY CONTAINS TIN-LEAD IN THE PC TAIL.
- 3) PRODUCT SPECIFICATION : PS-42878**
- 4) CONNECTORS ARE SHIPPED IN THERMOFORMED TRAYS. PER PACKAGING SPECIFICATION PK-42878-492.**
- 5) THIS MODULAR JACK CAVITY CONFORMS TO, AND ACCEPT PLUGS WHICH CONFORM TO, F.C.C. RULES AND REGULATIONS PART 68.5, SUBPART 'F'.**
- 6) THIS MODULAR JACK IS DESIGNED FOR USE WITH .047/(1.19) THICK P.C. BOARDS.**
- 7) THIS MODULAR JACK MUST BE CAPABLE OF FITTING INTO MOLEX GAGE G-42410.**
- 8) THESE DIMENSIONS APPLY WHEN RETENTION PEG OPTION IS PRESENT.**

2	E
1	E1
SH	REV

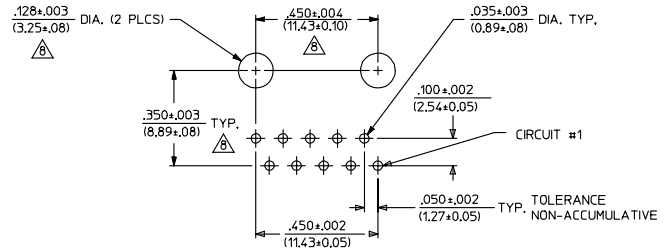
ADD "NOT TOOLED" EC NO: UCP2005-2408 DRAWN: SCHMIDT 2005/05/12 CHKD: DELHAG 2005/05/12 APPR: F SMITH 2005/05/12	QUALITY SYMBOLS	GENERAL TOLERANCES (UNLESS SPECIFIED)	SCALE 4:1	DESIGN UNITS INCH	THIRD ANGLE PROJECTION	REVISE ON CAD ONLY	
	4 PLACES ±.010 ±.010	3 PLACES ±.010 ±.010	DIMENSION STYLE IN/MM	TITLE	LOW PROFILE, 8/8 & 8/10 VERTICAL MODJACK W/ .165/(4.20) RADIUS-ASSY		
	2 PLACES ±.025 ±.015	1 PLACE ±.038 ±.015	APPROVED BY R EDGLEY	DATE 1998/08/11	MATERIAL NO.	DOCUMENT NO.	SHEET NO.
	ANGULAR ±1/2°	DRAFT WHERE APPLICABLE MUST REMAIN WITHIN DIMENSIONS	DATE 1998/08/11	1998/08/11	SEE CHART	SDA-43090-****	1 OF 2

tb_frame_C_P_ME_T Rev. C 2002/05/05 12 11 10 9 8 7 6 5 4 3 2 1



RECOMMENDED P.C. BOARD LAYOUT

8 POSITION MODULAR JACK BODY LOADED
WITH 8 TERMINALS IS SHOWN ABOVE



RECOMMENDED P.C. BOARD LAYOUT

8 POSITION MODULAR JACK BODY LOADED
WITH 10 TERMINALS IS SHOWN ABOVE

SEE SHEET ONE EC NO: UCP2004-1617 DRAWN:LSCHMIDT 2004/03/03 CHKD:LSCHMIDT 2004/03/03 APPR:FSMITH 2004/03/03	QUALITY SYMBOLS	GENERAL TOLERANCES (UNLESS SPECIFIED)		SCALE 4:1	DESIGN UNITS INCH	THIRD ANGLE PROJECTION	REVISE ON CAD ONLY
	▽-0	4 PLACES ±.005 ±.005		DIMENSION STYLE IN/MM		TITLE LOW PROFILE, 8/8 & 8/10 VERTICAL MODJACK W/ .165/(4.20) RADIUS-ASSY	DRAWN BY DATE MUELLER 1998/08/10
	▽-0	3 PLACES ±.010 ±.010		CHECKED BY DATE ROBERTS 1998/08/11			
	▽-0	2 PLACES ±.025 ±.015		APPROVED BY DATE R EDGLEY 1998/08/11		MATERIAL NO. MOLEX INCORPORATED	DOCUMENT NO. SDA-43090-****
	▽-0	1 PLACE ±0.38 ±.005		DRAFT WHERE APPLICABLE MUST REMAIN WITHIN DIMENSIONS			
	▽-0	ANGULAR ±1/2°		THIS DRAWING CONTAINS INFORMATION THAT IS PROPRIETARY TO MOLEX INCORPORATED AND SHOULD NOT BE USED WITHOUT WRITTEN PERMISSION		SHEET NO. 2 OF 2	