

Excellent Integrated System Limited

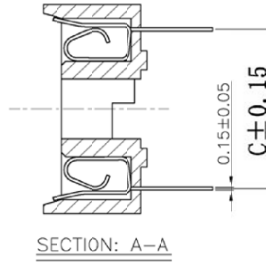
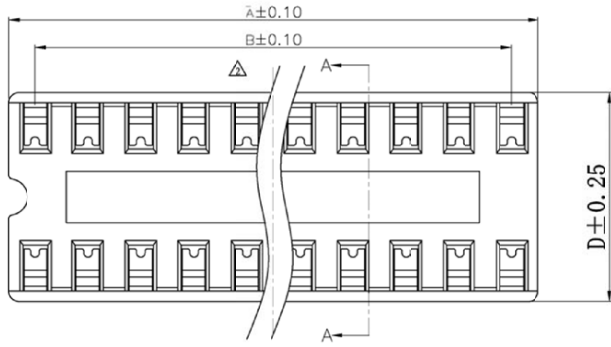
Stocking Distributor

Click to view price, real time Inventory, Delivery & Lifecycle Information:

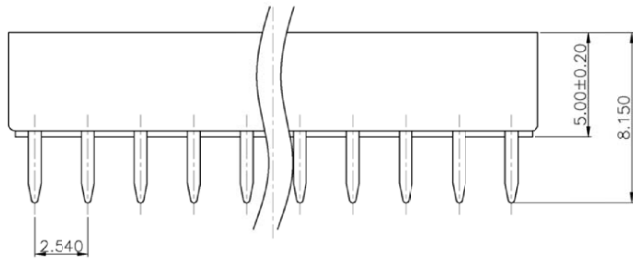
[CNC Tech](#)
[241-06-1-03](#)

For any questions, you can email us directly:
sales@integrated-circuit.com

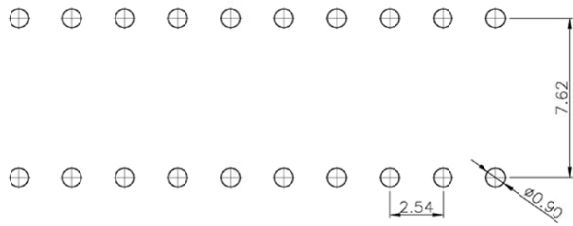
REV	ECN.NO.	B Y	DATE
A1	△EG-H:1002	SYSTEM	08/04/23
A2	△EG-H:1003	SYSTEM	08/08/06



NOTES:
 MATERIAL:
 CONTACTS:PHOSPHOR BRONZE
 INSULATOR:PBT+30% GLASS UL 94V-0
 ELECTRICAL:
 CONTACT CURRENT PATING:1A
 DIELECTRIC WITHSTANDING VOLTAGE: 1000V AC
 CONTACT RESISTANCE: 20milliohms max
 INSULATION RESISTANCE: 1000 MEGOHMS
 CAPACITANCE:0.5PICO-FARAD MAX MUM
 TEMPERATURE RANGE:-40°C+105°C
 MECHANICAL:
 ENGAGING FORCE:340g/A CONTACT MAX.
 SEPARATING FORCE:20g/A CONTACT MIN.
 DURABILITY:50 CYCLES
 NO.OF CONTACT:6-48
 FINISH:
 CONTACT PLATING:TIN PLATED 60.03U"-88.35U"



PIN NO.	DIM A	DIM B	DIM C	DIM D
6	7.62	5.03	7.62	10.16
8	10.16	7.62	7.62	10.16
14	17.78	15.24	7.62	10.16
16	20.32	17.76	7.62	10.16
18	22.86	20.32	7.62	10.16
20	25.4	22.86	7.62	10.16
22	27.95	25.4	7.62	10.16



PCB LAYOUT

-TOLERANCES- UNLESS OTHERWISE SPECIFIED		CnC Tech, LCC Industrial Cable and Connector Technology					
X.X ±0.30	X.X' ±3'		TITLE IC SOCKET PH:2.54				
X.XX ±0.20	X.XX' ±1'		PRODUCT NO: 241-XX-1-03				
X.XXX ±0.10	X.XXX' ±0.5'	APPD:	DATE	SCALE	UNIT	TYPE	PAGE
		CHECK:	08.08.06	FREE	MM	Z	1
		DRAW:					