



**Distributor of Amphenol Commercial Products: Excellent Integrated System Limited**  
Datasheet of L717TWB17W2P - D-Sub Connector Plug, Male Pins 17 (15 + 2 Power) Position  
Free Hanging (In-Line) Solder Cup

Contact us: [sales@integrated-circuit.com](mailto:sales@integrated-circuit.com) Website: [www.integrated-circuit.com](http://www.integrated-circuit.com)

---

## **Excellent Integrated System Limited**

Stocking Distributor

Click to view price, real time Inventory, Delivery & Lifecycle Information:

[Amphenol Commercial Products](#)  
[L717TWB17W2P](#)

For any questions, you can email us directly:  
[sales@integrated-circuit.com](mailto:sales@integrated-circuit.com)

Contact us: [sales@integrated-circuit.com](mailto:sales@integrated-circuit.com) Website: [www.integrated-circuit.com](http://www.integrated-circuit.com)

This document is the property of Amphenol Corporation and is intended for the express condition that it is not to be disclosed, reproduced or used, in whole or in part, for manufacturing or sale by anyone other than Amphenol Corporation without the prior consent. A that no right is granted to disclose or to use any information in this document.

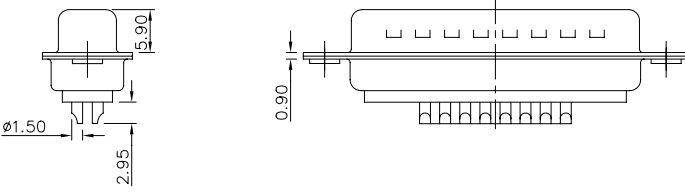
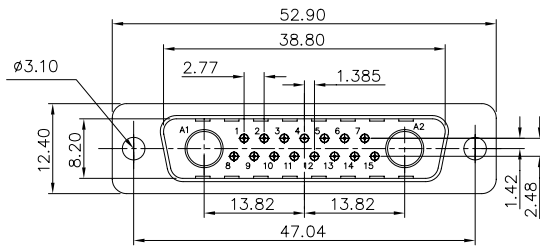
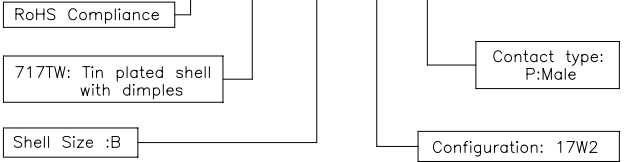
| REVISIONS |     |             |          |          |
|-----------|-----|-------------|----------|----------|
| SYM       | ECN | DESCRIPTION | DATE     | APPROVED |
|           |     |             | 12/19/07 |          |

**D-SUB TECHNICAL DATA**

- SHELL : Steel, 100u" min tin over 50u" min nickel
- BODY : Glass filled thermoplastic.
- CONTACTS : Flame retardant to UL94 V-0 Color Black
- ELECTRICAL : Voltage rating: Signal contacts 300 V Rms to 50 Hz  
 Current rating: Signal contacts 7.5A  
 Withstanding Voltage >1000 V Rms to 50 Hz for one minute  
 Insulation resistance >5000 M Ohms  
 Contact resistance: Signal contacts 20 mOhms max
- CLIMATIC : Temperature range -55 °C up to 155°C  
 Damp heat 56 days(40 °C-95% HR)
- MARKING : Amphenol-...(Series No.)  
 Commercial reference  
 Manufacturing date

**PRODUCT CODE**

**L 717TW B 17W2 P**



Customer drawing

|                            |        |                     |             |                                     |
|----------------------------|--------|---------------------|-------------|-------------------------------------|
| UNLESS OTHERWISE SPECIFIED |        | APPROVAL            | DATE        | Amphenol                            |
| TOLERANCES                 |        | DRAWN               | 12/19/07    |                                     |
|                            | U.S.   | METRIC              | Chester.com | TITLE<br>Hybrid contacts, TW series |
| .X                         | +/-    | 0.50                | CHECKED     |                                     |
| .XX                        | +/-    | 0.30                | CHECKED     | DRAWING FILE :<br>C L717TW B17W2P   |
| .XXX                       | +/-    | 0.20                |             |                                     |
| FUNCTIONS                  |        | DRAWING FILE :      |             | SIZE                                |
| ANGLES +/-                 |        | ANGLE OF PROJECTION |             | A4                                  |
| REMOVE SHARP EDGES         |        | SCALE               |             | NONE                                |
| DIMENSIONS                 |        | SHEET 1             |             | OF 1                                |
| U.S.                       | INCHES |                     |             | REV. A                              |
| METRIC                     | MM     |                     |             |                                     |

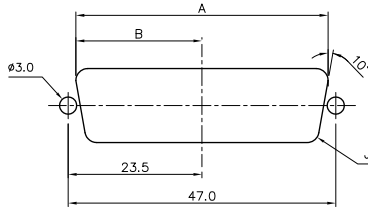
Contact us: [sales@integrated-circuit.com](mailto:sales@integrated-circuit.com) Website: [www.integrated-circuit.com](http://www.integrated-circuit.com)

This document is the property of Amphenol Corporation and is delivered on the express condition that it is not to be disclosed, reproduced or used in whole or in part, by manufacturers or sold by anyone other than Amphenol Corporation without its prior consent, & that no right is granted to disclose or to use any information in this document.

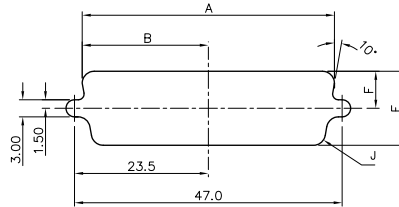
| REVISIONS |             |           |
|-----------|-------------|-----------|
| SYM.      | DESCRIPTION | DATE      |
| 1         |             | Sep/22/11 |



Optimal cutout for rear mounting



Standard cutout



| Shell size | Mounting method | A    | B    | E    | F   | J   |
|------------|-----------------|------|------|------|-----|-----|
| B          | Front           | 44.3 | 22.1 | 13.0 | 6.5 | 2.1 |
|            | Rear            | 42.5 | 21.3 | 11.4 | 5.7 | 3.4 |

Customer drawing for proposal

|                            |        |                     |                      |  |
|----------------------------|--------|---------------------|----------------------|--|
| UNLESS OTHERWISE SPECIFIED |        | APPROVAL            | DATE                 | Amphenol<br>Amphenol East Asia Limited         |
| TOLERANCES                 |        | DRAWN               | DATE                 |  |
|                            | U.S.   | APPROVED            | Sep/22/11            | TITLE<br>Hybrid contacts, TW series            |
|                            | METRIC | CHECKED             | Phong Tang Sep/22/11 |  |
| X                          | +/-    |                     |                      | DRAWING FILE :                                 |
| XX                         | +/-    |                     |                      |  |
| XXX                        | +/-    |                     |                      | SIZE DRAWING NO.<br>A4 Panel cutout for 25 pin |
| FRACTIONS                  | +/-    |                     |                      |  |
| ANGLES                     | +/-    |                     |                      | SCALE NONE                                     |
| FOR MATERIALS AND FINISHES |        | ANGLE OF PROJECTION |                      | REV. 1   |
| SEE NOTES                  |        | REMOVE SHARP EDGES  |                      | SHEET 1 OF 1                                   |
| DIMENSIONS                 |        | U.S. INCHES         |                      |  |
| U.S. INCHES                |        | METRIC MM           |                      |  |