



Distributor of CNC Tech: Excellent Integrated System Limited

Datasheet of 1003-024-02000 - Connector Receptacle USB TypeB 3.0, Super Speed 9
Position Through Hole, Right Angle, Horizontal

Contact us: sales@integrated-circuit.com Website: www.integrated-circuit.com

Excellent Integrated System Limited

Stocking Distributor

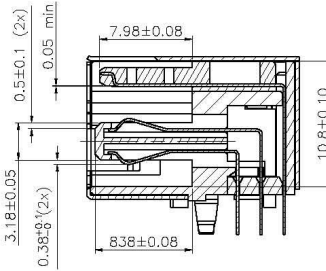
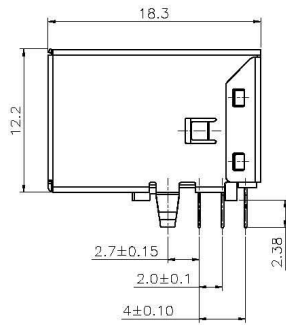
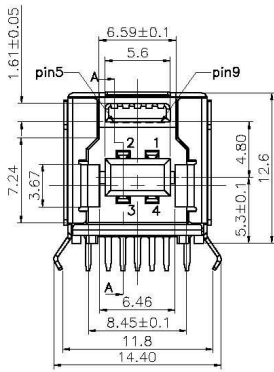
Click to view price, real time Inventory, Delivery & Lifecycle Information:

[CNC Tech](#)

[1003-024-02000](#)

For any questions, you can email us directly:

sales@integrated-circuit.com



SECTION A-A

NOTE

MATERIAL:

- 1. 1-1 HOUSING: LCP UL94V-0
- 1-2 CONTACT: 1~4PIN,COPPER(T=0.20MM) 5~9PIN,BTASS(T=0.20MM)
- 1-3 SHELL: FRONT SHELL,BRASS(T=0.30MM) COVER SHELL,SPCC(T=0.20MM)

2.ELECTRICAL CHARACTERISTICS:

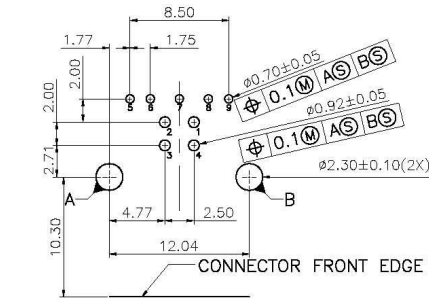
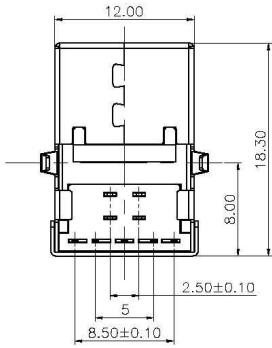
- 2.1 CONTACT RESISTANCE:30MOHM MAX.
- 2.2 CONTACT CURRENT RATING:1.5A
- 2.3 DIELECTRIC WITHSTANDING VOLTAGE:500 V R.M.S.
- 2.4 INSULATION RESISTANCE 1000 MEGOHMS MIN.
- 2.5 OPERATING TEMPERATURE:-40°C~85°C

3.MECHANICAL CHARACTERISTICS:

- 3.1 MATING FORCE:3.57KG MAX.
- 3.2 UNMATING FORCE:1.02KG MIN.
- 3.3 DURABILITY:MANDATORY:5000 CYCLES.

4.PLATING

- 4.1 TERMINAL:GOLD FLASH ALL OVER 50U"MIN NICKEL AND 1U"MIN TIN ALL OVER 50U"MIN. NICKEL ON SOLDER AREA
- 4.2 SHELL:150U" MIN.NICEL OVER 20U"MIN BRASS.



RECOMMENDED PCB LAYOUT

10/10/26	ING		NEW DWG		AO
DATE	DR.BY	ECN.NO.	DESCRIPTION	MARK	VER.
-TOLERANCES- UNLESS OTHERWISE SPECIFIED			CnC Tech, LLC		
			TITLE: USB 3.0 B/F DIP90° 15U"		
X.X ±0.38	X.X' ±2'	APPD:	PRODUCT NO: 1003-024-02000		
X.XX ±0.25	X.XX' ±1'	CHECK:	DATE	SCALE	UNIT TYPE PAGE
X.XXX ±0.10	X.XXX' ±0.5"	DRAW:	2010.10.26	1:1	mm Z 1/1