

Excellent Integrated System Limited

Stocking Distributor

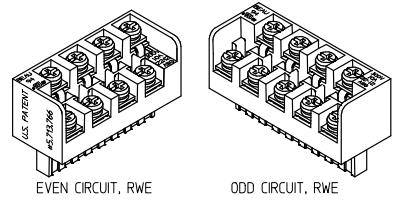
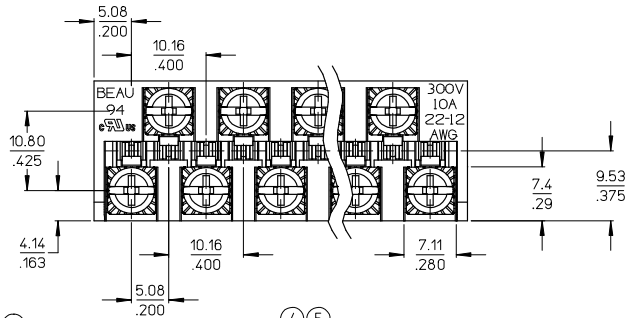
Click to view price, real time Inventory, Delivery & Lifecycle Information:

[Molex Connector Corporation](#)
[0399400303](#)

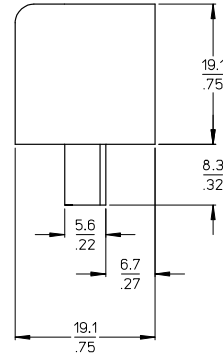
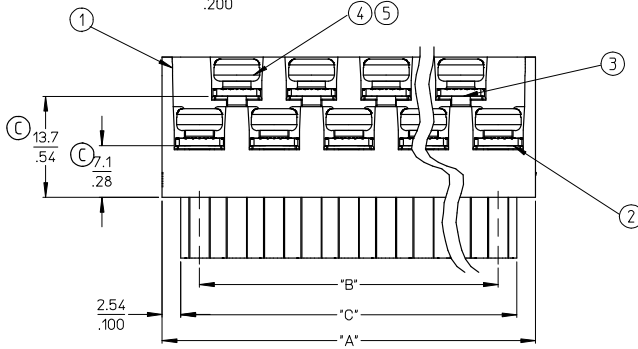
For any questions, you can email us directly:

sales@integrated-circuit.com

10 9 8 7 6 5 4 3 2 39940



AUXILIARY VIEWS
SCALE 1:1



NOTES:

1. MATERIAL: SEE TABLE
2. FINISHES: SEE TABLE
3. PRODUCT SPECIFICATION: NOT REQUIRED
4. PACKAGING: NOT REQUIRED
5. MATES WITH: MOST 5.08 (.200) PIN HEADERS
6. "XX" REFERS TO THE QUANTITY OF CIRCUITS
7. ROHS COMPLIANT

ODD CIRCUIT CONFIGURATION SHOWN

ITEM	QTY. (EVEN NO. OF CIRCUITS)	QTY. (ODD NO. OF CIRCUITS)	DESCRIPTION	MATERIAL	FINISH
5	XX	XX	SCREW, M3.5 X .280	STEEL	ZINC CHROMATE
4	XX	XX	NUT, M3.5, HEX	STEEL	ZINC CHROMATE
3	XX/2	(XX-1)/2	REAR ROW TERM. (LONG)	PHOS. BRONZE	HOT TIN DIP
2	XX/2	(XX+1)/2	FRONT ROW TERM. (SHORT)	PHOS. BRONZE	HOT TIN DIP
1	1	1	BARRIER	THERMOPLASTIC	BLACK

REVISED & REDRAWN
EC NO: WNA2008-0391
DRAWN: ENCINAS 2008/07/01
CHKD: YORK 2008/07/02
APPR: JIMKNEIL 2008/07/07

QUALITY SYMBOLS
▽=0
▽=0

	GENERAL TOLERANCES (UNLESS SPECIFIED)	
	mm	INCH
4 PLACES	± .13	± .005
3 PLACES	± .13	± .01
2 PLACES	± 0.3	± .01
1 PLACE	± 0.3	± .01
ANGULAR		± 2°

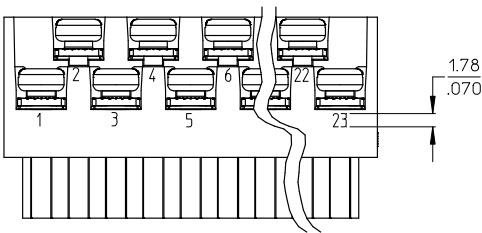
DIMENSION STYLE: MM/IN
SCALE: 2:1
DESIGN UNITS: INCH
THIRD ANGLE PROJECTION
DRAWN BY: J. FARMER 2004/12/03
CHECKED BY: R. KEMP 2004/12/03
APPROVED BY: GHR 2004/12/03
MATERIAL NO.: SEE SHEET 2
DOCUMENT NO.: SD-39940-005

TITLE: 5.08/.200 PLUG ASSY, FWE WITH CLOSED ENDS (9409XX)
MOLEX INCORPORATED
SHEET NO.: 1 OF 2
THIS DRAWING CONTAINS INFORMATION THAT IS PROPRIETARY TO MOLEX INCORPORATED AND SHOULD NOT BE USED WITHOUT WRITTEN PERMISSION

10 9 8 7 6 5 4 3 2 1

10 9 8 7 6 5 4 3 2 39940

NO. OF CIRC. "XX"	"A" DIM.	"B" DIM.	"C" DIM. [+0.00] [-0.00]	MATERIAL NO. (STANDARD)
03	20.3 (.80)	10.16 (.400)	15.2 (.60)	399400303
04	25.4 (1.00)	15.24 (.600)	20.3 (.80)	399400304
05	30.5 (1.20)	20.32 (.800)	25.4 (1.00)	399400305
06	35.6 (1.40)	25.40 (1.000)	30.5 (1.20)	399400306
07	40.6 (1.60)	30.48 (1.200)	35.6 (1.40)	399400307
08	45.7 (1.80)	35.56 (1.400)	40.6 (1.60)	399400308
09	50.8 (2.00)	40.64 (1.600)	45.7 (1.80)	399400309
10	55.9 (2.20)	45.72 (1.800)	50.8 (2.00)	399400310
11	61.0 (2.40)	50.80 (2.000)	55.9 (2.20)	399400311
12	66.0 (2.60)	55.88 (2.200)	61.0 (2.40)	399400312
13	71.1 (2.80)	60.96 (2.400)	66.0 (2.60)	399400313
14	76.2 (3.00)	66.04 (2.600)	71.1 (2.80)	399400314
15	81.3 (3.20)	71.12 (2.800)	76.2 (3.00)	399400315
16	86.4 (3.40)	76.20 (3.000)	81.3 (3.20)	399400316
17	91.4 (3.60)	81.28 (3.200)	86.4 (3.40)	399400317
18	96.5 (3.80)	86.36 (3.400)	91.4 (3.60)	399400318
19	101.6 (4.00)	91.44 (3.600)	96.5 (3.80)	399400319
20	106.7 (4.20)	96.52 (3.800)	101.6 (4.00)	399400320
21	111.8 (4.40)	101.60 (4.000)	106.7 (4.20)	399400321
22	116.9 (4.60)	106.68 (4.200)	111.8 (4.40)	399400322
23	121.9 (4.80)	111.76 (4.400)	116.8 (4.60)	399400323
24	127.0 (5.00)	116.84 (4.600)	121.9 (4.80)	399400324



OPTIONAL
10A IMPRINTING
(ODD CIRCUIT CONFIGURATION SHOWN)

SEE SHEET ONE EC NO: WNA2008-0391 DRAWN BY: JENC/MAS 2008/07/04 CHECKED BY: JENC/TORIK 2008/07/02 APPROVED BY: JALONE/IL 2008/07/07	QUALITY SYMBOLS ▽=0 ▽=0	GENERAL TOLERANCES (UNLESS SPECIFIED)		DIMENSION STYLE	SCALE	DESIGN UNITS	THIRD ANGLE PROJECTION	
				MM/IN	2:1	INCH		
				mm	INCH	DRAWN BY: J. FARMER DATE: 2004/12/03 CHECKED BY: R. KEMP DATE: 2004/12/03 APPROVED BY: GHR DATE: 2004/12/03		
				ANGULAR ± 2 °		TITLE: 5.08/.200 PLUG ASSY, FWE WITH CLOSED ENDS (9409XX) MATERIAL NO. SEE CHART DOCUMENT NO. SD-39940-005 SHEET NO. 2 OF 2		
DRAFT WHERE APPLICABLE MUST REMAIN WITHIN DIMENSIONS		THIS DRAWING CONTAINS INFORMATION THAT IS PROPRIETARY TO MOLEX INCORPORATED AND SHOULD NOT BE USED WITHOUT WRITTEN PERMISSION						

9 8 7 6 5 4 3 2 1