

Excellent Integrated System Limited

Stocking Distributor

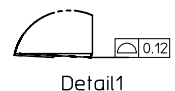
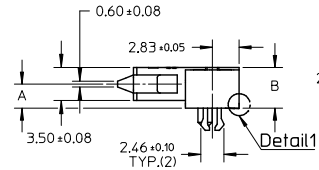
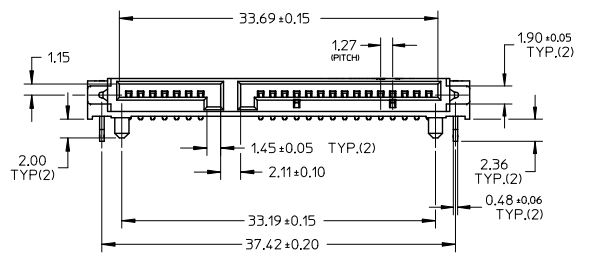
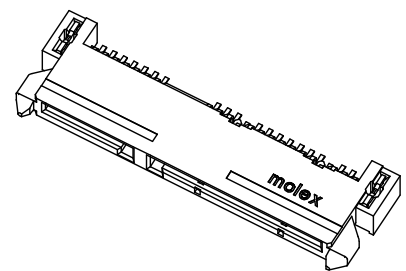
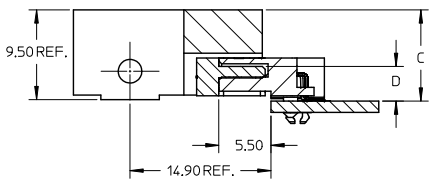
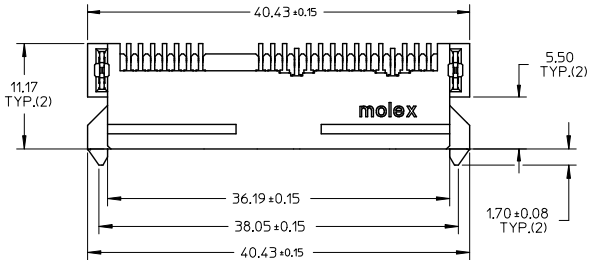
Click to view price, real time Inventory, Delivery & Lifecycle Information:

[Molex Connector Corporation](#)
[0470182010](#)

For any questions, you can email us directly:

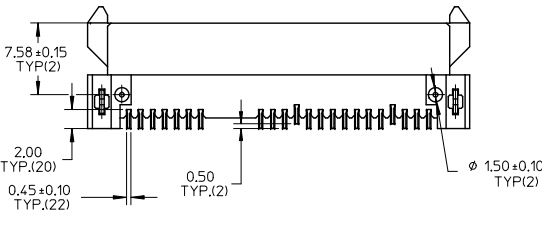
sales@integrated-circuit.com

10 9 8 7 6 5 4 3 2 1



NOTES:

- 1.MATERIAL:
HOUSING: LCP, GLASS FILLED, UL94V-0. COLOR: BLACK;
FORKLOCK: COPPER ALLOY;
TERMINALS: COPPER ALLOY.
- 2.TERMINAL PLATING:
CONTACT AREA:
(a) GOLD FLASH(0.025 MICRONS MINIMUM);
(b) GOLD, THICKNESS=0.76 MICRONS MINIMUM;
(c) GOLD, THICKNESS=0.38 MICRONS MINIMUM;
SOLDER AREA: TIN, THICKNESS=2.00 MICRONS MINIMUM;
UNDER PLATE: NICKEL, THICKNESS=1.27 MICRONS MINIMUM.
- 3.FORLOCK PLATING:
SOLDER AREA: TIN, THICKNESS=2.00 MICRONS MINIMUM;
UNDER PLATING: NICKEL, THICKNESS=1.27 MICRONS MINIMUM.
- 4.PRODUCT SPECIFICATION: PS-67492-001.
- 5.PACKAGING METHOD: 47018-400*, TAPE REEL, DETAIL REFER TO PK-47018-003,
47018-210*, TAPE REEL, DETAIL REFER TO PK-47018-001,
OTHERS, TRAY, DETAIL REFER TO PK-67492-001.
- 6.MATING PARTS: 87703/87672.
- 7.PRODUCT COMPLIANT TO RoSH DIRECTIVE 2002/95/EC AND 2000/53/EC.



REVISED EC. NO: SH2016-0027 DRAWN: GLLI CHKD: APPR: ATIN REV	DESCRIPTION 2015/12/08 2016/01/18	QUALITY SYMBOLS	GENERAL TOLERANCES (UNLESS SPECIFIED)	DIMENSION STYLE	SCALE	DESIGN UNITS	THIRD ANGLE PROJECTION																					
		$\nabla=0$ $\nabla=0$ $\nabla=0$	<table border="1"> <tr><th colspan="2">mm</th><th colspan="2">INCH</th></tr> <tr><td>4 PLACES</td><td>± ---</td><td>± ---</td><td>± ---</td></tr> <tr><td>3 PLACES</td><td>± ---</td><td>± ---</td><td>± ---</td></tr> <tr><td>2 PLACES</td><td>± 0.25</td><td>± ---</td><td>± ---</td></tr> <tr><td>1 PLACE</td><td>± 0.25</td><td>± ---</td><td>± ---</td></tr> <tr><td colspan="4">ANGULAR ± 3°</td></tr> </table>	mm		INCH		4 PLACES	± ---	± ---	± ---	3 PLACES	± ---	± ---	± ---	2 PLACES	± 0.25	± ---	± ---	1 PLACE	± 0.25	± ---	± ---	ANGULAR ± 3°				MM ONLY
mm		INCH																										
4 PLACES	± ---	± ---	± ---																									
3 PLACES	± ---	± ---	± ---																									
2 PLACES	± 0.25	± ---	± ---																									
1 PLACE	± 0.25	± ---	± ---																									
ANGULAR ± 3°																												
DRAWN BY: GLLI		DATE: 2011/12/12		DRAWN BY: GLLI		DATE: 2011/12/12																						
CHECKED BY:		DATE:		APPROVED BY: XJSONG		DATE: 2011/12/12																						
MATERIAL NO.		SEE SHEET 2		DOCUMENT NO.		SD-47018-001																						
DRAFT WHERE APPLICABLE MUST REMAIN WITHIN DIMENSIONS		SIZE: A3		THIS DRAWING CONTAINS INFORMATION THAT IS PROPRIETARY TO MOLEX INCORPORATED AND SHOULD NOT BE USED WITHOUT WRITTEN PERMISSION																								

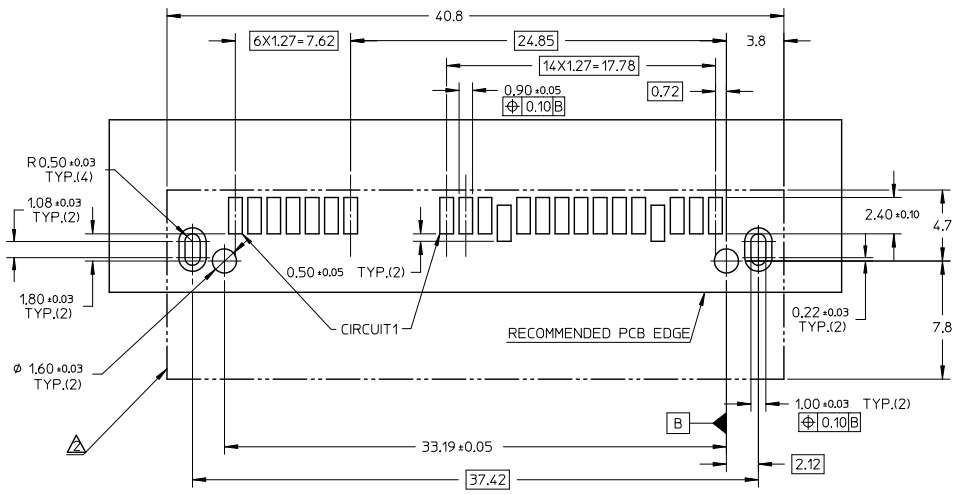
SERIAL ATA DOCKING CONNECTOR TOP MOUNT TYPE

MOLEX INCORPORATED

SHEET NO. 1 OF 2

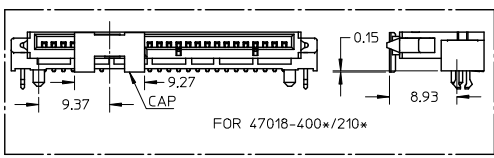
9 8 7 6 5 4 3 2 1

10 9 8 7 6 5 4 3 2 1



NOTES:
1. RECOMMENDED P.C.B THICKNESS: 1.60+/-0.05.
△ CONNECTOR PROFILE, ALL THE TRACE SHOULD BE AVOIDED THIS AREA.

RECOMMENDED P.C.B LAYOUT (COMPONENT SIDE)



PRODUCT	CONTACT PLATING SPEC	DIM'A	DIM'B	DIM'C	DIM'D	PACKAGE	REMARK
47018-2100	NOTES 2 (A) OF SHEET 1					TAPE REEL	PURE TIN (LIGHT TIN)
47018-2101	NOTES 2 (B) OF SHEET 1	2.55	4.30	9.65	3.65	TAPE REEL	WITH CAP
47018-2102	NOTES 2 (C) OF SHEET 1					TAPE REEL	PURE TIN (LIGHT TIN)
47018-4000	NOTES 2 (A) OF SHEET 1					TAPE REEL	WITH CAP
47018-4001	NOTES 2 (B) OF SHEET 1	3.40	5.15	10.50	4.50	TAPE REEL	PURE TIN (LIGHT TIN)
47018-4002	NOTES 2 (C) OF SHEET 1					TAPE REEL	WITH CAP
47018-2010	NOTES 2 (A) OF SHEET 1					TRAY	PURE TIN (MATTE TIN)
47018-2011	NOTES 2 (B) OF SHEET 1	2.55	4.30	9.65	3.65	TRAY	PURE TIN (LIGHT TIN)
47018-2012	NOTES 2 (C) OF SHEET 1					TRAY	PURE TIN (LIGHT TIN)
47018-2000	NOTES 2 (A) OF SHEET 1					TRAY	PURE TIN (LIGHT TIN)
47018-2001	NOTES 2 (B) OF SHEET 1	2.55	4.30	9.65	3.65	TRAY	PURE TIN (LIGHT TIN)
47018-2002	NOTES 2 (C) OF SHEET 1					TRAY	PURE TIN (LIGHT TIN)

REVISED EC NO: SH2016-0027 DRAWING: GLL1 CHKD: APPR: ATIN 2015/12/08 2016/01/18	QUALITY SYMBOLS	GENERAL TOLERANCES (UNLESS SPECIFIED)	DIMENSION STYLE	SCALE	DESIGN UNITS	THIRD ANGLE PROJECTION
	▽=0	mm INCH	MM ONLY	1:1	METRIC	
	▽=0	4 PLACES ± --- ± ---	DRAWN BY DATE			SERIAL ATA DOCKING CONNECTOR TOP MOUNT TYPE MOLEX INCORPORATED
	▽=0	3 PLACES ± --- ± ---	GLL1 2011/12/12			
▽=0	2 PLACES ± 0.25 ± ---	CHECKED BY DATE				
▽=0	1 PLACE ± 0.25 ± ---	APPROVED BY DATE				
	ANGULAR ± 3°	XJSONG 2011/12/12				
	DRAFT WHERE APPLICABLE MUST REMAIN WITHIN DIMENSIONS	MATERIAL NO.	SEE TABLE	DOCUMENT NO.	SD-47018-001	SHEET NO. 2 OF 2
		SIZE	A3	THIS DRAWING CONTAINS INFORMATION THAT IS PROPRIETARY TO MOLEX INCORPORATED AND SHOULD NOT BE USED WITHOUT WRITTEN PERMISSION		

9 8 7 6 5 4 3 2 1