

Excellent Integrated System Limited

Stocking Distributor

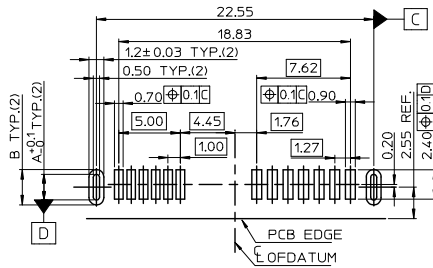
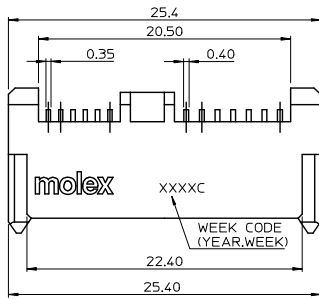
Click to view price, real time Inventory, Delivery & Lifecycle Information:

[Molex Connector Corporation](#)
[0483300001](#)

For any questions, you can email us directly:

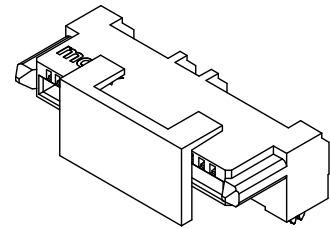
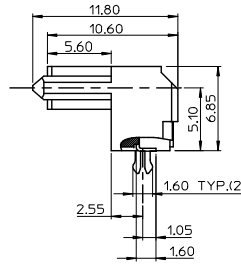
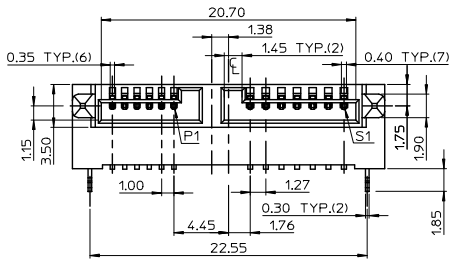
sales@integrated-circuit.com

7 6 5 4 3 2 1



CLIP FUNCTION AVAILABLE		CLIP FUNCTION UNAVAILABLE	
DIM A	DIM B	DIM A	DIM B
1.4	2.1	1.75	2.45

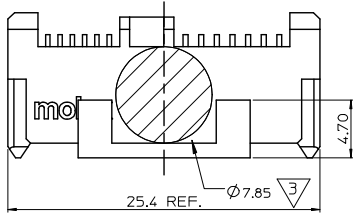
RECOMMENDED PC BOARD LAYOUT TOLERANCE: ±0.05mm(TOP VIEW)



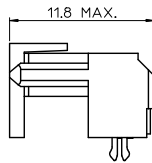
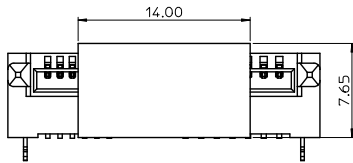
NEW RELEASE EC NO: SHZ009-0026 DRWN:GWANG08 CHKD:DMZHANG02 APPR:HWANG 2008/12/23 2008/12/23 2009/01/09	QUALITY SYMBOLS ▽=0 ▽=0	GENERAL TOLERANCES (UNLESS SPECIFIED)		DIMENSION STYLE MM ONLY		SCALE	DESIGN UNITS METRIC	THIRD ANGLE PROJECTION																
		<table border="1"> <thead> <tr> <th></th> <th>mm</th> <th>INCH</th> </tr> </thead> <tbody> <tr> <td>4 PLACES</td> <td>±---</td> <td>±---</td> </tr> <tr> <td>3 PLACES</td> <td>±---</td> <td>±---</td> </tr> <tr> <td>2 PLACES</td> <td>±0.25</td> <td>±---</td> </tr> <tr> <td>1 PLACE</td> <td>±0.25</td> <td>±---</td> </tr> </tbody> </table>			mm	INCH	4 PLACES	±---	±---	3 PLACES	±---	±---	2 PLACES	±0.25	±---	1 PLACE	±0.25	±---	DRAWN BY LINDA		DATE 2007/10/23	TITLE SLIMLINE SATA RECEPTACLE REVERSE SMT WITH CLIP MOLEX INCORPORATED DOCUMENT NO. SD-48330-001 SHEET NO. 1 OF 2		
			mm	INCH																				
		4 PLACES	±---	±---																				
3 PLACES	±---	±---																						
2 PLACES	±0.25	±---																						
1 PLACE	±0.25	±---																						
ANGULAR ± 3 °		CHECKED BY ALLEN LIN		DATE 2007/10/25																				
DRAFT WHERE APPLICABLE MUST REMAIN WITHIN DIMENSIONS		APPROVED BY ERICK LAN		DATE 2007/10/25																				
		MATERIAL NO. SEE SHEET 2																						

6 5 4 3 2 1

7 6 5 4 3 2 1



P/N	PLATING OPTIONS	WITHSTANDING MFG TEST
48330-0001	GOLD FLASH	NO
48330-0002	15 MICROINCH	NO
48330-0003	30 MICROINCH	YES



NOTES:

- 1.MATERIAL:
HOUSING & CAP:LIQUID CRYSTAL POLYMER,GLASS FIBER FILLED,
UL94V-0.COLOR:BLACK.
TERMINAL:PHOSPHOR BRONZE.
CLIP:COPPER ALLOY.
- 2.PLATING:
TERMINAL:
CONTACT AREA:SEE TABLE
SOLDER TAIL:MATTE TIN,THICKNESS=100 MICROINCH MIN/2.54 MICROMETER MIN.
UNDER PLATE:NICKEL(NI).
CLIP:TIN(Sn),THICKNESS=100 MICROINCH MIN/2.54 MICROMETER MIN.
- 3.PICK & PLACE VACUUM AREA.
- 4.RECOMMENDED PCB THICKNESS:1.20±0.05mm
- 5.PRODUCT SPECIFICATION REFER TO PS-48321-001
- 6.TEST SUMMARY REFER TO TS-48330-001
- 7.PACKAGING SPECIFICATION REFER TO PK-48330-001
- 8.LEAD FREE & RoHS COMPLIANT PRODUCT.

SEE SHEET 1 EC NO: SH2009-0026 DRWNG:GWG08 CHKD:DMZHANG02 APPR:HMWANG	2008/12/23 2008/12/23 2009/01/09	QUALITY SYMBOLS ▽=0 ▽=0	GENERAL TOLERANCES (UNLESS SPECIFIED)		DIMENSION STYLE MM ONLY		SCALE 1:1	DESIGN UNITS METRIC	THIRD ANGLE PROJECTION		
				mm	INCH	DRAWN BY LINDA	DATE 2007/10/23	TITLE SLIMLINE SATA RECEPTACLE REVERSE SMT WITH CLIP			
			4 PLACES	±---	±---	CHECKED BY ALLEN LIN	DATE 2007/10/25				
			3 PLACES	±---	±---	APPROVED BY ERICK LAN	DATE 2007/10/25	MOLEX INCORPORATED DOCUMENT NO. SD-48330-001 SHEET NO. 2 OF 2			
2 PLACES	±0.25	±---	MATERIAL NO. SEE TABLE								
1 PLACE	±0.25	±---	DRAFT WHERE APPLICABLE MUST REMAIN WITHIN DIMENSIONS		SIZE A4 THIS DRAWING CONTAINS INFORMATION THAT IS PROPRIETARY TO MOLEX INCORPORATED AND SHOULD NOT BE USED WITHOUT WRITTEN PERMISSION						

6 5 4 3 2 1