

## Excellent Integrated System Limited

Stocking Distributor

Click to view price, real time Inventory, Delivery & Lifecycle Information:

[Molex Connector Corporation](#)  
[0622021801](#)

For any questions, you can email us directly:

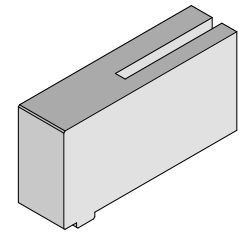
[sales@integrated-circuit.com](mailto:sales@integrated-circuit.com)

Power Dock Connectors

**Modular Press-In  
Tool for  
Power Dock CPI**



**Application Tooling  
Specification Sheet**



**Order No. 62202-1807**

**DESCRIPTION**

The 62202-1801 to 62202-1809 Modular Power Dock Press-In Tools are designed to insert Power Dock CPI connector modules onto a PC Board. The Individual press blocks stack together in a standard tool holder to press varying arrangements of power dock module assemblies on to a PC board.

**SCOPE**

Products: Power Dock CPI connector modules. See Product List below for specific application tools.

**Product List**

The following is a partial list of the product order numbers and their specifications this tool is designed to run. Updates to this list are available on www.molex.com.

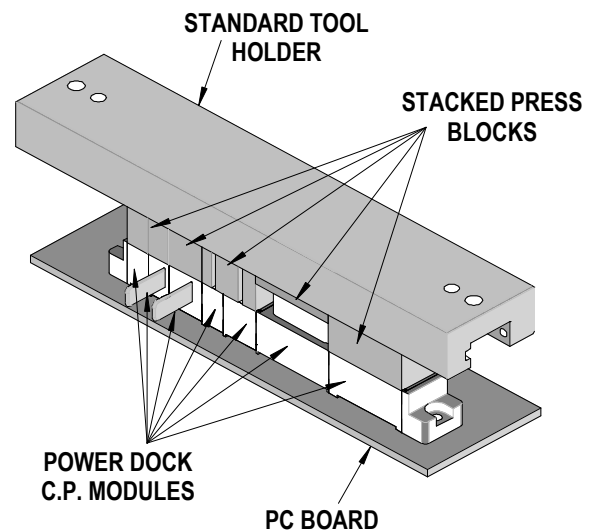


Figure 1 (For Power Dock Module assemblies)

Series No.	Description	Order No.			
		45520-0001	45520-2001	45520-3001	45520-4001
45520	Power Dock Modular Power Plug 250V Vertical Std CPI	45520-0001	45520-2001	45520-3001	45520-4001
		45520-5001			
45521	Power Dock Modular Power Plug 250V Vertical 10.5 Mate CPI	45521-0001	45521-2001	45521-3001	45521-4001
		45521-5001			
45522	Power Dock Modular Power Plug 250V Vertical 12.5 Mate CPI	45522-0001	45522-2001	45522-3001	45522-4001
		45522-5001			
45523	Power Dock Modular Power Plug 250V Vertical 8.5 Mate CPI	45523-0001	45523-2001	45523-3001	45523-4001
		45523-5001			
45524	Power Dock Modular Power Socket 600V Vertical Std CPI	45524-0001	45524-0002		
45525	Power Dock Modular Power Plug 600V Vertical 10.5 Mate CPI	45525-0001	45525-0002		
45526	Power Dock Modular Power Plug 600V Vertical 12.5 Mate CPI	45526-0001			
45527	Power Dock Modular Power Plug 600V Vertical 8.5 Mate CPI	45527-0001			
45528	Power Dock Modular Signal 6 Pin Vertical CPI	45528-0001			
45529	Power Dock Modular Signal 24 Pin Vertical CPI	45529-0001			
45530	Power Dock Modular Signal Socket 6 Pin Vertical CPI	45530-0001			
45531	Power Dock Modular Signal Socket 24 Pin Vertical CPI	45531-0001			
45534	Power Dock Modular Vertical Guide Socket Passive	45534-0001			
45536	Power Dock Modular Vertical Guide Pin Passive	45536-0001			
45541	Power Dock Modular Signal 24 Pin Vertical CPI	45541-0001			
45544	Power Dock Modular Signal 6 Pin Vertical CPI	45544-0001			
45660	Power Dock Power Plug 250V CPI	45660-0001	45660-0002	45660-0004	45660-9004

Power Dock Connectors

**Chart 1**  
**Power Dock CPI modules and matching Press blocks**

Power Dock Module Description	Power Dock Module Order Number	Press Block Order Number	Press Block Length	Press Block Quantity Required	Total Length Required
250V Socket Module	45520-0001	62202-1805	7.5mm	1	7.5mm
	45520-2001			2	15mm
	45520-3001			3	22.5mm
	45520-4001			4	30mm
	45520-5001			5	37.5mm
600V Socket Module	45524-0001	62202-1806	12mm	1	12mm
	45524-0002			2	24mm
250V Power Module	45521-0001	62202-1807	7.5mm	1	7.5mm
	45521-2001			2	15mm
	45521-3001			3	22.5mm
	45521-4001			4	30mm
	45521-5001			5	37.5mm
	45522-0001			1	7.5mm
	45522-2001			2	15mm
	45522-3001			3	22.5mm
	45522-4001			4	30mm
	45522-5001			5	37.5mm
	45523-0001			1	7.5mm
	45523-2001			2	15mm
	45523-3001			3	22.5mm
	45523-4001			4	30mm
	45523-5001			5	37.5mm
250V Custom Stack	45660-0001	62202-1807	7.5mm	1	7.5mm
	45660-0002			2	15mm
	45660-0004			4	30mm
	45660-9004			4	30mm
600V Power Module	45525-0001	62202-1808	12mm	1	12mm
	45526-0001			1	12mm
	45527-0001			1	12mm
Female Signal Module	45530-0001	62202-1801	11.5mm	1	11.5mm
Female Signal Module	45531-0001	62202-1802	26.5mm	1	26.5mm
Male Signal Module	45529-0001	62202-1804	26.5mm	1	26.5mm
	45541-0001			1	26.5mm
Male Signal Module	45528-0001	62202-1803	11.5mm	1	11.5mm
	45544-0001			1	11.5mm
Passive Guide Pin	45536-0001	62202-1809	12mm	1	12mm
Passive Guide Socket	45534-0001	62202-1806 or 1809	12mm	1	12mm

**OPERATION**

1. The power dock modules are arranged in an assembly by locking them together end to end. Then the assembly is manually placed in its proper location on the PC board.

Power Dock Connectors

2. The 62202-180\* press modules are arranged in a standard tool holder to match the connector assembly. See Chart 1. When pressing in multiple modules, make sure the tool holder length will accommodate all the tools. See Chart 2.
3. The press tool assembly is loaded onto the connector assembly.
4. The connector assembly is then pressed on to the PC board with a manual arbor press or other flat platen press. See Figure 1.
5. A support fixture (customer supplied) is highly recommended due to the high forces required to press in the connectors. It is placed below the PC board. This support may require clearance holes for the connector pins if the board thickness is less than the pin length.
6. A press stop to control the insertion stroke is also recommended.

**Chart 2**

**Standard Tooling holders**

The 62201-95XX tooling holders are available in a variety of lengths to accommodate multiple press-in tools.

Standard Tool Holder	Standard Tool Holder
Order Number	Length
62201-9501	24mm
62201-9502	72mm
62201-9503	156mm
62201-9504	216mm
62201-9509	254mm
62201-9511	305mm
62201-9512	406mm
62201-9513	100mm

**Contact Information**

For more information on Molex application tooling please contact Molex at 1-800-786-6539.

<http://www.molex.com>