

Excellent Integrated System Limited

Stocking Distributor

Click to view price, real time Inventory, Delivery & Lifecycle Information:

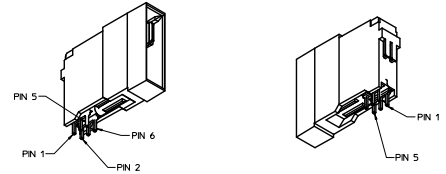
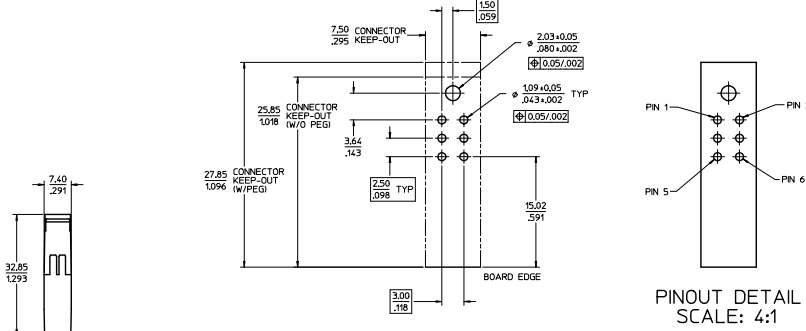
[Molex Connector Corporation](#)
[0755611521](#)

For any questions, you can email us directly:

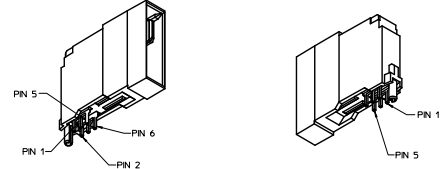
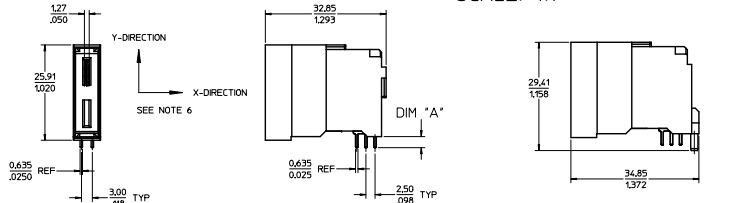
sales@integrated-circuit.com

PART NUMBER	DESCRIPTION	DIM "A" PC TAIL LENGTH	PLATING
75561-5200	SHORT PC TAIL - NO PEG	3.077/.121	30µ INCH MIN SELECT HARD GOLD IN CONTACT AREA WITH 100µ INCH MIN SELECT TIN IN TAIL AREA OVER 50µ INCH MIN NICKEL OVERALL.
75561-5201	LONG PC TAIL - NO PEG	3.81/.150	
75561-1520	SHORT PC TAIL - PEG	3.077/.121	30µ INCH MIN SELECT HARD GOLD IN CONTACT AREA WITH 100µ INCH MIN SELECT TIN IN TAIL AREA OVER 50µ INCH MIN NICKEL OVERALL.
75561-1521	LONG PC TAIL - PEG	3.81/.150	

- NOTES:
- MATERIALS:
 - HOUSING: 30% GLASS FILLED, LCP 94V-0, COLOR: BLACK
 - TERMINALS: COPPER ALLOY
 - PLATING: PER ES-88 - SEE CHART
 - SEE CHART FOR REFERENCE DOCUMENTS
 - PLUG MATES WITH RECEPTACLE ASSEMBLIES: 75545-5100 & 75545-5101
 - MODULE IS DESIGNED FOR SOLDERING TO THE PCB
 - MODULE ASSEMBLY IS RoHS COMPLIANT
 - GATHERABILITY: +0.65/.026 X-DIRECTION
+1.30/.051 Y-DIRECTION



75561-5200 SHOWN (W/O PEG)



75561-1520 SHOWN (W/PEG)

REFERENCE DOCUMENTS

PS-75431-999	PRODUCT SPECIFICATION PERFORMANCE AND RATINGS
SD-75555-***	FINAL ASSEMBLY CONFIGURATION DRAWING

CORRECTED MFG GRAPHICS REC NO. 167204-2993 DRWNS/JUILLES 2010/11/19 CHK/CHANDRA 2010/11/19 APPROVALS: 2010/12/10 A4	QUALITY SYMBOLS	GENERAL TOLERANCES (UNLESS SPECIFIED):	DIMENSION STYLE	SCALE	DESIGN UNITS	THIRD ANGLE PROJECTION	
	4 PLACES	mm	MM/MIN	2:1	METRIC	⊙	
	3 PLACES	INCH					
	2 PLACES						
	1 PLACE						
	DRAFT WHERE APPLICABLE MUST REMAIN WITHIN DIMENSIONS		APPROVED BY	DATE	TITLE		
			APATEL	2007/10/12	POWERMASS 40 AMP MODULE, PLUG UPPER		
			SEE CHART		DOCUMENT NO.	SHEET NO.	
					SD-75561-102	1 OF 1	
	THIS DRAWING CONTAINS INFORMATION THAT IS PROPRIETARY TO MOLEX INCORPORATED AND SHOULD NOT BE USED WITHOUT WRITTEN PERMISSION						