

Excellent Integrated System Limited

Stocking Distributor

Click to view price, real time Inventory, Delivery & Lifecycle Information:

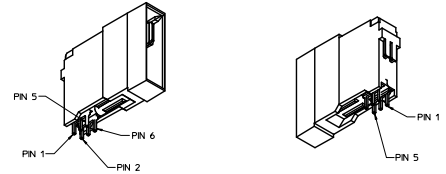
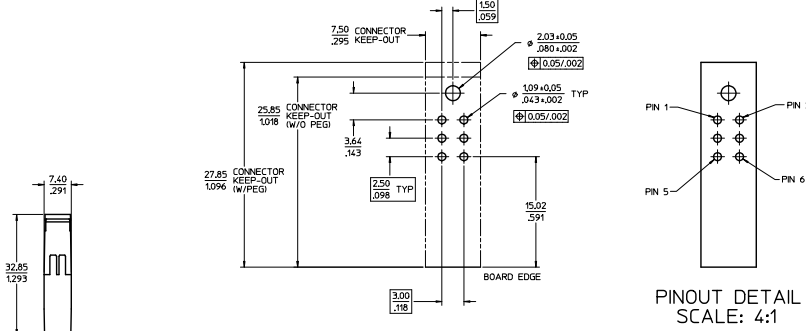
[Molex Connector Corporation](#)
[0755615201](#)

For any questions, you can email us directly:

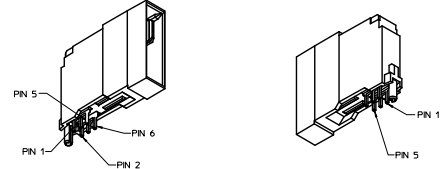
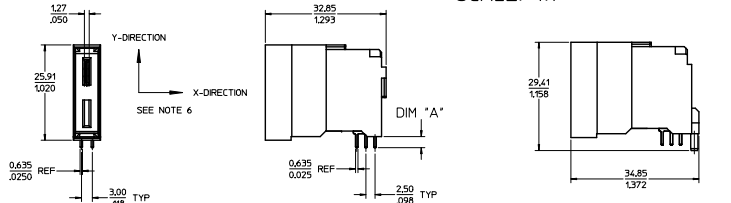
sales@integrated-circuit.com

PART NUMBER	DESCRIPTION	DIM "A" PC TAIL LENGTH	PLATING
75561-5200	SHORT PC TAIL - NO PEG	3.077/121	30µ INCH MIN SELECT HARD GOLD IN CONTACT AREA WITH 100µ INCH MIN SELECT TIN IN TAIL AREA OVER 50µ INCH MIN NICKEL OVERALL
75561-5201	LONG PC TAIL - NO PEG	3.81/150	
75561-1520	SHORT PC TAIL - PEG	3.077/121	30µ INCH MIN SELECT HARD GOLD IN CONTACT AREA WITH 100µ INCH MIN SELECT TIN IN TAIL AREA OVER 50µ INCH MIN NICKEL OVERALL
75561-1521	LONG PC TAIL - PEG	3.81/150	

- NOTES:
- MATERIALS:
 - HOUSING: 30% GLASS FILLED, LCP 94V-0, COLOR: BLACK
 - TERMINALS: COPPER ALLOY
 - PLATING: PER ES-88 - SEE CHART
 - SEE CHART FOR REFERENCE DOCUMENTS
 - PLUG MATES WITH RECEPTACLE ASSEMBLIES: 75545-5100 & 75545-5101
 - MODULE IS DESIGNED FOR SOLDERING TO THE PCB
 - MODULE ASSEMBLY IS RGH5 COMPLIANT
 - GATHERABILITY: +0.65/0.26 X-DIRECTION
+1.30/0.51 Y-DIRECTION



75561-5200 SHOWN (W/O PEG)



75561-1520 SHOWN (W/PEG)

REFERENCE DOCUMENTS

PS-75431-999	PRODUCT SPECIFICATION PERFORMANCE AND RATINGS
SD-75555-***	FINAL ASSEMBLY CONFIGURATION DRAWING

CORRECTED MFG GRAPHICS REC NO: 167204-2993 DRWS: JUILLES 2010/11/19 CHK: BHANDRA 2010/11/19 APPR: APATEL 2010/12/10 A4	QUALITY SYMBOLS	GENERAL TOLERANCES (UNLESS SPECIFIED):	DIMENSION STYLE	SCALE	DESIGN UNITS	THIRD ANGLE PROJECTION
	4 PLACES	mm INCH	MM/IN	2:1	METRIC	⊘
	3 PLACES	±0.008				
	2 PLACES	±0.015				
	1 PLACE	±0.33				
		ANGULAR ±1/2°				
		DRAFT WHERE APPLICABLE MUST REMAIN WITHIN DIMENSIONS				
		SEE CHART				
		THIS DRAWING CONTAINS INFORMATION THAT IS PROPRIETARY TO MOLEX INCORPORATED AND SHOULD NOT BE USED WITHOUT WRITTEN PERMISSION				

DRAWN BY	DATE	TITLE	POWERMASS 40 AMP MODULE, PLUG UPPER
JSCHAFFER	2007/10/11/10		
CHECKED BY	DATE		MOLEX INCORPORATED
MDATA	2007/10/11/12		
APPROVED BY	DATE		
APATEL	2007/10/11/12		
MATERIAL NO.	DOCUMENT NO.		
	SD-75561-102		
			SHEET NO. 1 OF 1