

Excellent Integrated System Limited

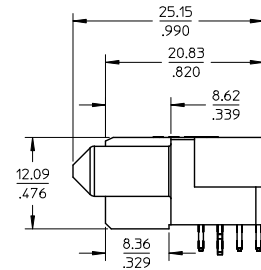
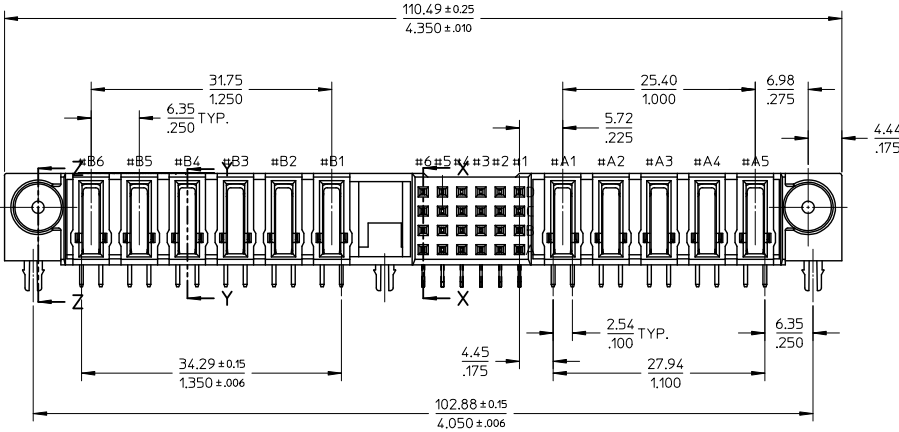
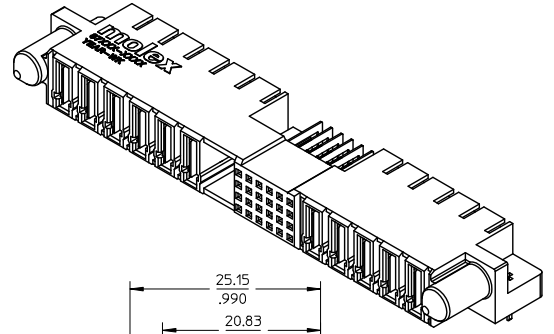
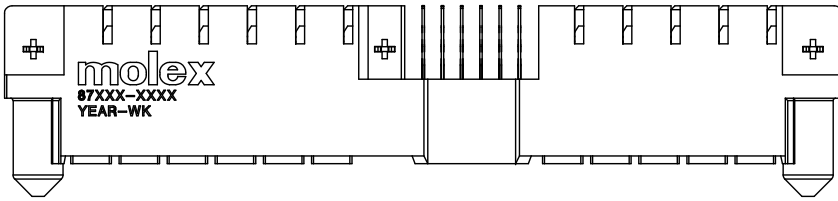
Stocking Distributor

Click to view price, real time Inventory, Delivery & Lifecycle Information:

[Molex Connector Corporation](#)
[0876161001](#)

For any questions, you can email us directly:
sales@integrated-circuit.com

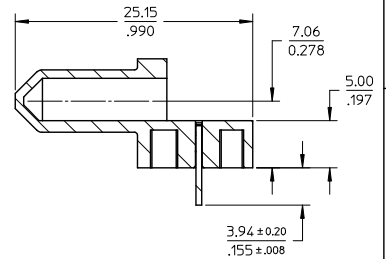
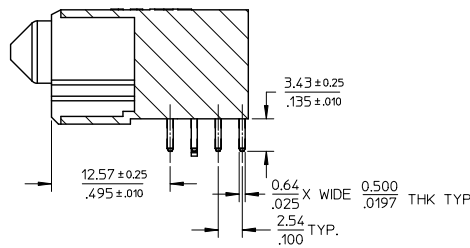
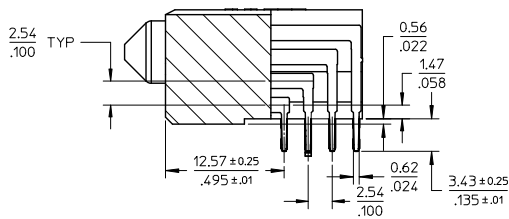
10 9 8 7 6 5 4 3 2 1



CORRECT PCB HOLE SIZE EC NO. S2009-0475 DRAWN BY: 2009/01/16 CHK/DAT/SEE: 2009/01/20 APPR: M/LONG 2009/02/05	QUALITY SYMBOLS ▽=0 ▽=0	GENERAL TOLERANCES (UNLESS SPECIFIED)		DIMENSION STYLE MM/IN		SCALE NTS	DESIGN UNITS METRIC	THIRD ANGLE PROJECTION		
		4 PLACES ± --- ± ---	mm	INCH	DRAWN BY	DATE	TITLE			
		3 PLACES ± --- ± .005			KMGH	2002/08/01	MPS POWER RECEPTACLE			
		2 PLACES ± 0.13 ± .010			CHECKED BY	DATE	6POWER-24SIGNAL-5POWER			
1 PLACE ± 0.25 ± ---			PTLIM	2002/11/21	R/A, T/H					
			APPROVED BY	DATE	MOLEX INCORPORATED					
			SKTOH	2002/11/21	MATERIAL NO.					
					SEE TABLE					
					DOCUMENT NO.					
					SD-87616-011					
					SHEET NO.					
					1 OF 3					

9 8 7 6 5 4 3 2 1

10 9 8 7 6 5 4 3 2 1



CONNECTOR - NOTES

1. MATERIALS

- HOUSING - LCP, GLASS FILLED,
UL 94V-0, COLOR: BLACK
- POWER PIN - COPPER ALLOY
- SIGNAL PIN - COPPER ALLOY
- BOARD LOCK - COPPER ALLOY

2. PLATING

- POWER AND SIGNAL PINS - 0.76 MICROMETER MINIMUM GOLD (Au) AT CONTACT AREA AND 2.54 MICROMETER MINIMUM TIN AT SOLDER TAIL AREA OVER
- 1.27 MICROMETER MINIMUM NICKEL (Ni) UNDERPLATE.

3. PRODUCT SPECIFICATION : PS-87615-005.

4. SEE SHEET 3 FOR RECOMMENDED PCB LAYOUT AND THICKNESS

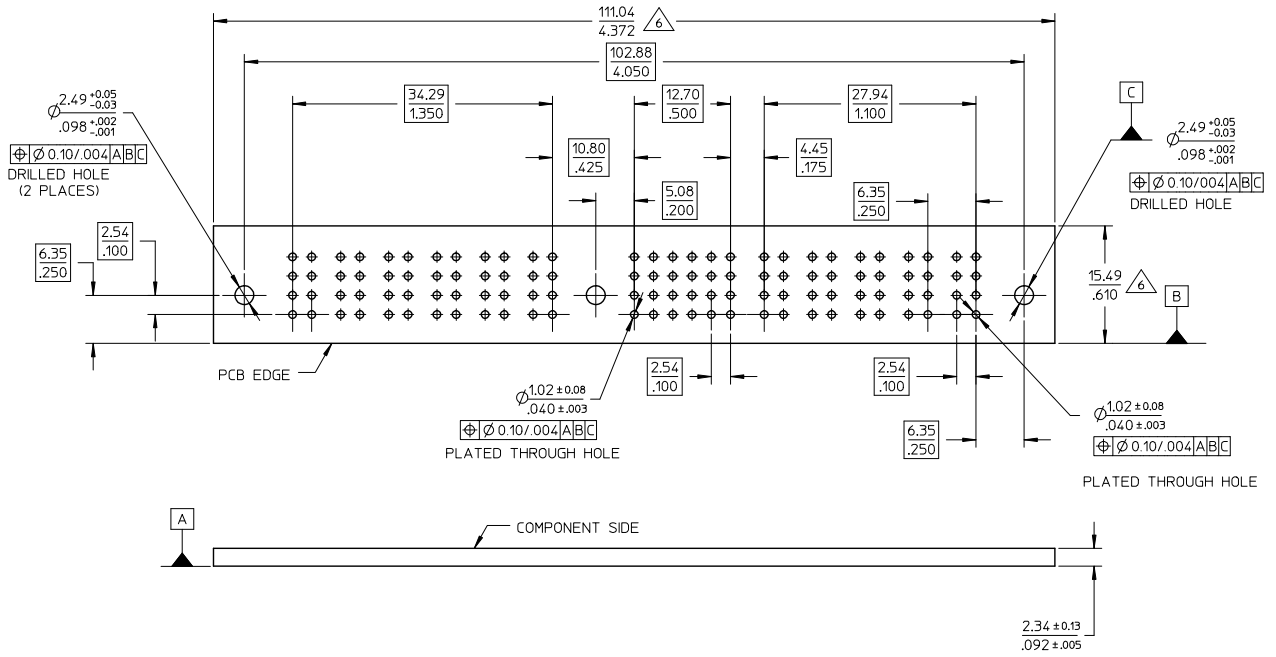
5. MATES WITH MOLEX PART NUMBER : 87615-0001

⚠ COMPONENT STAY AWAY ZONE FROM CONNECTOR

<p>CORRECT PCB HOLE SIZE</p> <p>EC NO: S2009-0475</p> <p>DRW:SKANG 2009/01/16</p> <p>CHK:ATSEE 2009/01/20</p> <p>APP:MLONG 2009/02/05</p> <p>REV DESCRIPTION</p> <p>D1</p>	<p>QUALITY SYMBOLS</p> <p>▽=0</p> <p>▽=0</p>	<p>GENERAL TOLERANCES (UNLESS SPECIFIED)</p> <table border="1"> <thead> <tr> <th></th> <th>mm</th> <th>INCH</th> </tr> </thead> <tbody> <tr> <td>4 PLACES</td> <td>± ---</td> <td>± ---</td> </tr> <tr> <td>3 PLACES</td> <td>± ---</td> <td>± .005</td> </tr> <tr> <td>2 PLACES</td> <td>± 0.13</td> <td>± .010</td> </tr> <tr> <td>1 PLACE</td> <td>± 0.25</td> <td>± ---</td> </tr> <tr> <td colspan="3">ANGULAR ± 3 °</td> </tr> </tbody> </table>		mm	INCH	4 PLACES	± ---	± ---	3 PLACES	± ---	± .005	2 PLACES	± 0.13	± .010	1 PLACE	± 0.25	± ---	ANGULAR ± 3 °			<p>DIMENSION STYLE</p> <p>MM/IN</p> <p>DRAWN BY DATE</p> <p>KMGOH 2002/08/01</p> <p>CHECKED BY DATE</p> <p>PTL IM 2002/11/21</p> <p>APPROVED BY DATE</p> <p>SKTOH 2002/11/21</p>	<p>SCALE</p> <p>NTS</p> <p>DESIGN UNITS</p> <p>METRIC</p> <p>THIRD ANGLE PROJECTION</p>	<p>TITLE</p> <p>MPS POWER RECEPTACLE 6POWER-24SIGNAL-5POWER R/A, T/H</p> <p>MOLEX INCORPORATED</p>	<p>MATERIAL NO.</p> <p>SEE TABLE</p>	<p>DOCUMENT NO.</p> <p>SD-87616-011</p>	<p>SHEET NO.</p> <p>2 OF 3</p>
		mm	INCH																							
	4 PLACES	± ---	± ---																							
	3 PLACES	± ---	± .005																							
2 PLACES	± 0.13	± .010																								
1 PLACE	± 0.25	± ---																								
ANGULAR ± 3 °																										
<p>DRAFT WHERE APPLICABLE MUST REMAIN WITHIN DIMENSIONS</p>		<p>SIZE</p> <p>A3</p>	<p>THIS DRAWING CONTAINS INFORMATION THAT IS PROPRIETARY TO MOLEX INCORPORATED AND SHOULD NOT BE USED WITHOUT WRITTEN PERMISSION</p>																							

9 8 7 6 5 4 3 2 1

PART NUMBER	PART STATUS	PACKAGING
87616-1001	TOOLED	TRAY



CORRECT PCB HOLE SIZE EC NO. S2009-0475 DRAWN:KANG 2009/01/16 CHK:DATSEE 2009/01/20 APPR:MLONG 2009/02/05	QUALITY SYMBOLS $\nabla=0$ $\nabla=0$	GENERAL TOLERANCES (UNLESS SPECIFIED)		DIMENSION STYLE MM/IN		SCALE NTS	DESIGN UNITS METRIC	THIRD ANGLE PROJECTION		
		4 PLACES	$\pm .13$	$\pm .005$	DRAWN BY	DATE	TITLE MPS POWER RECEPTACLE 6POWER-24SIGNAL-5POWER R/A, T/H			
		3 PLACES	$\pm .13$	$\pm .010$	CHECKED BY	DATE	MOLEX INCORPORATED			
		2 PLACES	$\pm .13$	$\pm .010$	APPROVED BY	DATE	MATERIAL NO. SEE TABLE DOCUMENT NO. SD-87616-011 SHEET NO. 3 OF 3			
1 PLACE	± 0.25	$\pm .010$	ANGULAR $\pm 3^\circ$		THIS DRAWING CONTAINS INFORMATION THAT IS PROPRIETARY TO MOLEX INCORPORATED AND SHOULD NOT BE USED WITHOUT WRITTEN PERMISSION					
DRAFT WHERE APPLICABLE MUST REMAIN WITHIN DIMENSIONS										