

Excellent Integrated System Limited

Stocking Distributor

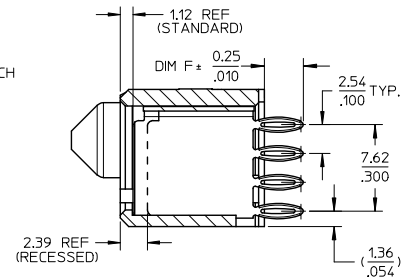
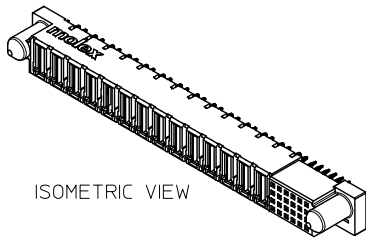
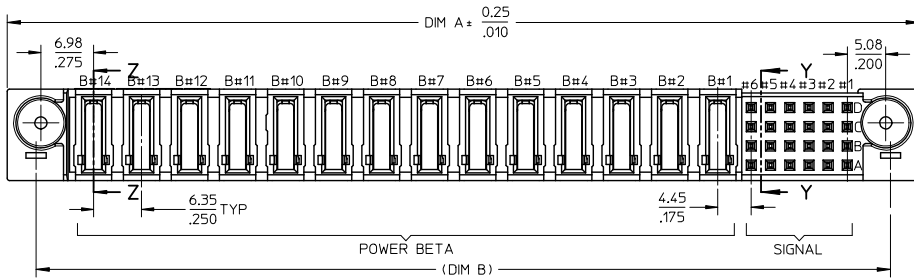
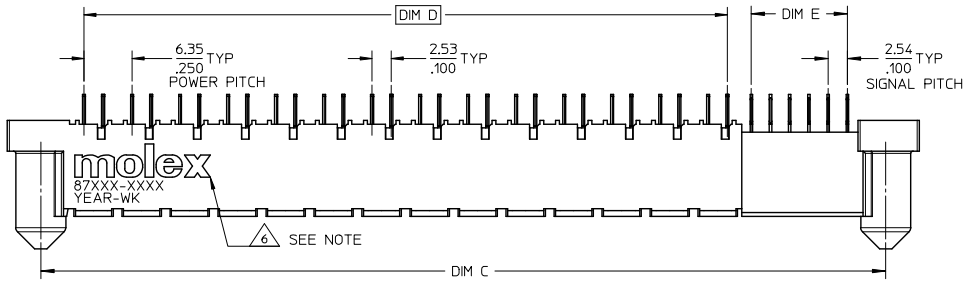
Click to view price, real time Inventory, Delivery & Lifecycle Information:

[Molex Connector Corporation](#)
[0877102001](#)

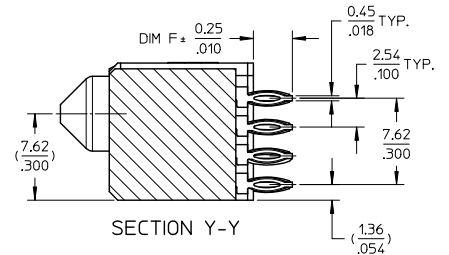
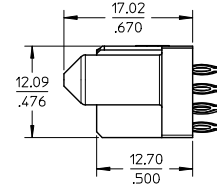
For any questions, you can email us directly:

sales@integrated-circuit.com

10 9 8 7 6 5 4 3 2 1



SECTION Z-Z

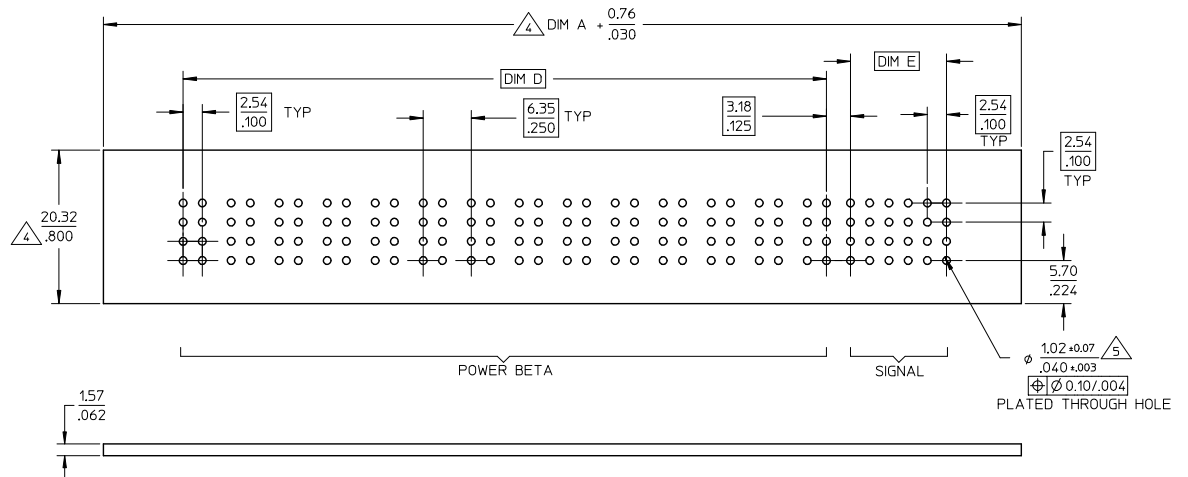


SECTION Y-Y

REVISED EC NO: S2014-0060 DRAWN: SKANG CHKD: RILONG APPR: RILONG	DESCRIPTION 2013/07/16 2013/09/06 2013/09/09	QUALITY SYMBOLS	GENERAL TOLERANCES (UNLESS SPECIFIED)	DIMENSION STYLE	SCALE	DESIGN UNITS	THIRD ANGLE PROJECTION																											
		<table border="1"> <tr> <th></th> <th>mm</th> <th>INCH</th> </tr> <tr> <td>4 PLACES</td> <td>± ---</td> <td>± ---</td> </tr> <tr> <td>3 PLACES</td> <td>± ---</td> <td>± .010</td> </tr> <tr> <td>2 PLACES</td> <td>± 0.25</td> <td>± ---</td> </tr> <tr> <td>1 PLACE</td> <td>± ---</td> <td>± ---</td> </tr> <tr> <td>0 PLACE</td> <td>±</td> <td>±</td> </tr> </table>		mm	INCH	4 PLACES		± ---	± ---	3 PLACES	± ---	± .010	2 PLACES	± 0.25	± ---	1 PLACE	± ---	± ---	0 PLACE	±	±	<table border="1"> <tr> <th>mm</th> <th>INCH</th> </tr> <tr> <td>± .010</td> <td>± .004</td> </tr> <tr> <td>± .025</td> <td>± .010</td> </tr> <tr> <td>± .050</td> <td>± .020</td> </tr> <tr> <td>± .127</td> <td>± .050</td> </tr> <tr> <td>± .254</td> <td>± .010</td> </tr> </table>	mm	INCH	± .010	± .004	± .025	± .010	± .050	± .020	± .127	± .050	± .254	± .010
	mm	INCH																																
4 PLACES	± ---	± ---																																
3 PLACES	± ---	± .010																																
2 PLACES	± 0.25	± ---																																
1 PLACE	± ---	± ---																																
0 PLACE	±	±																																
mm	INCH																																	
± .010	± .004																																	
± .025	± .010																																	
± .050	± .020																																	
± .127	± .050																																	
± .254	± .010																																	
D1		ANGULAR ± 3°	DRAFT WHERE APPLICABLE MUST REMAIN WITHIN DIMENSIONS	DRAWN BY: KMG0H CHECKED BY: PTLIM APPROVED BY: SKTOH	DATE: 2002/10/10 DATE: 2002/11/25 DATE: 2002/11/26	TITLE: POWER CONN. RECEPTACLE S-P(B) CONFIGURATION VERTICAL PRESS-FIT																												
				MATERIAL NO. SEE TABLE	DOCUMENT NO. SD-87710-011		SHEET NO. 1 OF 3																											
THIS DRAWING CONTAINS INFORMATION THAT IS PROPRIETARY TO MOLEX INCORPORATED AND SHOULD NOT BE USED WITHOUT WRITTEN PERMISSION																																		

9 8 7 6 5 4 3 2 1

10 9 8 7 6 5 4 3 2 1



RECOMMENDED PCB LAYOUT

CONNECTOR - NOTES

- MATERIALS :
 - HOUSING - LCP, GLASS FILLED, UL94-0,COLOR:BLACK.
 - SIGNAL PIN - COPPER ALLOY
 - POWER PIN - COPPER ALLOY
 - FINISH :
 - SIGNAL & POWER CONTACTS
 - 0.76 MICROMETER MINIMUM GOLD (Au) AT CONTACT AREA AND 2.54 MICROMETER MINIMUM TIN (Sn) AT SOLDER TAIL AREA OVER 1.27um MIN. NICKEL (Ni) UNDERPLATE.
 - PRODUCT SPECIFICATION: PS-87633-006.
- \triangle COMPONENT STAY AWAY ZONE FROM CONNECTOR.
 \triangle PCB NOTE FOR DIAMETER 1.02/.040 PLATED HOLE.
 - DRILLED HOLE SIZE IS 1.151/.0453
 - PLATE WITH 0.007/.0003 MINIMUM TIN OVER 0.03/.001 TO 0.08/.003 COPPER PLATING TO ACHIEVE 1.02+0.08/.040+0.003 HOLE.
 SEE SHEET 2 FOR RECOMMENDED PCB LAYOUT.
 \triangle MANUFACTURER LOGO,PART NUMBER AND YEAR-WEEK CODE.
 7. 14 POWER BETA-24 SIGNAL CONFIGURATION IS SHOWN FOR ILLUSTRATION ONLY.

REVISED EC. NO. S2014-0060 DRAWN:KANG 2013/07/16 CHECK:LONG 2013/09/06 APPR:RLONG 2013/09/09	QUALITY SYMBOLS $\nabla=0$ $\nabla=0$ $\nabla=0$	GENERAL TOLERANCES (UNLESS SPECIFIED)		DIMENSION STYLE MM/IN		SCALE NTS	DESIGN UNITS METRIC	THIRD ANGLE PROJECTION
		4 PLACES ± --- ± --- 3 PLACES ± --- ± .010 2 PLACES ± 0.25 ± --- 1 PLACE ± --- ± --- 0 PLACE ± ±	mm INCH ± --- ± --- ± .010 ± --- ± 0.25 ± --- ± --- ± --- ± ±	DRAWN BY KMG0H CHECKED BY PTLIM APPROVED BY SKTOH DATE 2002/10/10 DATE 2002/11/25 DATE 2002/11/26	TITLE POWER CONN. RECEPTACLE S-P(B) CONFIGURATION VERTICAL PRESS-FIT	MATERIAL NO. SEE TABLE	DOCUMENT NO. SD-87710-011	SHEET NO. 2 OF 3
DRAFT WHERE APPLICABLE MUST REMAIN WITHIN DIMENSIONS		THIS DRAWING CONTAINS INFORMATION THAT IS PROPRIETARY TO MOLEX INCORPORATED AND SHOULD NOT BE USED WITHOUT WRITTEN PERMISSION						

9 8 7 6 5 4 3 2 1

