



Distributor of Molex Connector Corporation: Excellent Integrated System Limited
Datasheet of 0945060100 - Connector Quick Connect Receptacle 18-24 AWG 0.250"
(6.35mm) Crimp

Contact us: sales@integrated-circuit.com Website: www.integrated-circuit.com

Excellent Integrated System Limited

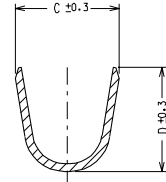
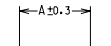
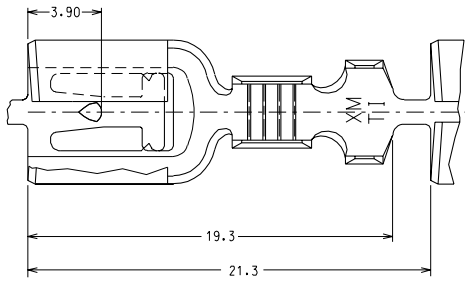
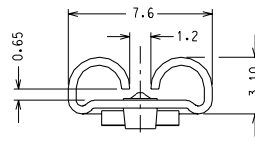
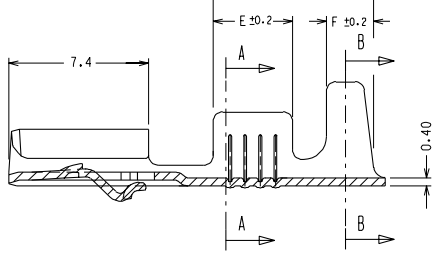
Stocking Distributor

Click to view price, real time Inventory, Delivery & Lifecycle Information:

[Molex Connector Corporation](#)
[0945060100](#)

For any questions, you can email us directly:
sales@integrated-circuit.com

Contact us: sales@integrated-circuit.com Website: www.integrated-circuit.com



CODICE P/N	FINITURA PLATING	MATERIALE MATERIAL	SEZ. RAME WIRE RANGE	Ø ISOLANTE INS. RANGE	DIMENSIONI / DIMENSION						
					A	B	C	D	E	F	G
94506 - 0100	greggio/ plain	ottone brass	0.5 - 1.0	2.0 - 3.3	3.0	3.0	4.5	4.5	4.2	2.4	8.3
94506 - 0101	stagnato/ tin										
94506 - 0200	greggio/ plain		1.0 - 2.5	2.7 - 4.3	3.8	4.0	5.5	5.5	4.2	2.5	8.5
94506 - 0201	stagnato/ tin										

IMPIEGATO CON HOUSING 94506-900X
 TO BE USED WITH HOUSING P/N 94506-900X

ECN Z7-011 22-07-96 Mod. spessori G.F.	ECN Z1-129 Agg. art. 94506-01XX 11-09-91 G. F.	EMESSE DIS. DEFINITIVO ECN Z0-141 11-12-90 G. F.	LTR REVISIONS	DIMENSIONS SHOWN (METRIC) INCH UNLESS OTHERWISE SPECIFIED TOLERANCES ANGULAR ± 2° (INCH (METRIC))	DRWG BY F. Cottardo	REVISE ONLY ON CAD SYSTEM SH. REV.	
				3 PLACE ± 2 PLACE ± ± 0.1 1 PLACE ± ± 0.2	CAD/CAM FILENAME CAD FILE 94506005	THIS DRAWING CONTAINS INFORMATION THAT IS PROPRIETARY TO MOLEX INC AND SHOULD NOT BE USED WITHOUT WRITTEN PERMISSION	
				DESIGN DIMENSION (PRIMARY) <input type="checkbox"/> (MM) <input type="checkbox"/> IN EQUIVALENT DIMENSION (SECONDARY) <input type="checkbox"/> (MM) <input type="checkbox"/> IN.	CHK'D BY APP'D BY M. Previtato	TITLE CAPOCORDA FEMMINA PER MASCHIO 6.3 x 0.8 -SAFELOCK- QIK KONNECT RECEPTACLE FOR 6.3 x 0.8 TABS -SAFELOCK-	
				SCALE 5 : 1	PART NO. VEDI TABELLA SEE CHART DWG NO. SD 94506 - 0XXX	SHEET NO. DATE 1 / 1 14-12-89	SIZE B

MOLEX INCORPORATED