

Excellent Integrated System Limited

Stocking Distributor

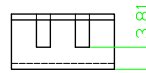
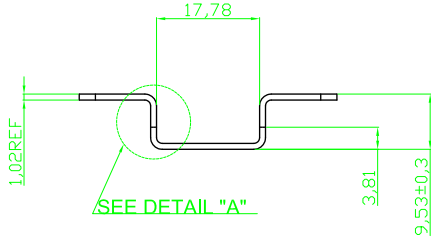
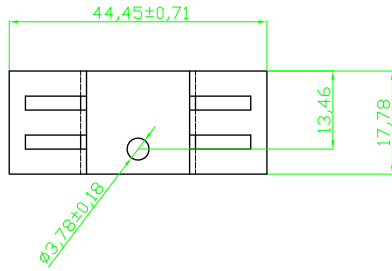
Click to view price, real time Inventory, Delivery & Lifecycle Information:

[ASSMANN WSW Components](#)
[V2007B](#)

For any questions, you can email us directly:

sales@integrated-circuit.com

RoHS compliant



DETAIL "A"

Notes
Material : ALUMINUM 1100
Finished : Black Anodize

Scale	FREE					Date	Name	Customer-No.
TOLERANCE						Drawn	11.08.2009	Dean
						Approved	10.03.2010	Andy
								ASSMANN WSW-No. V2007B
DIM	TOL	②	Modify drawing layout	10.03.2010	Alex	Drawing-No.		ASS 0849 HS rev02
X,°	±X°	①	Drawn	11.08.2009	Dean	Replace		Sheet
X,X°	±X°							
Angle	TOL	Id.	Modification	Date	Name	ASSMANN WSW components		

1

2

3

4

5

6

7