

Excellent Integrated System Limited

Stocking Distributor

Click to view price, real time Inventory, Delivery & Lifecycle Information:

[Panduit](#)
[FRQMC-X](#)

For any questions, you can email us directly:

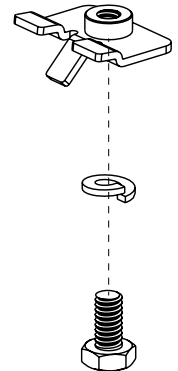
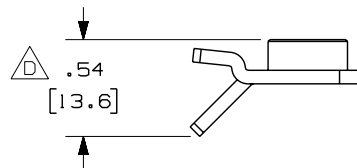
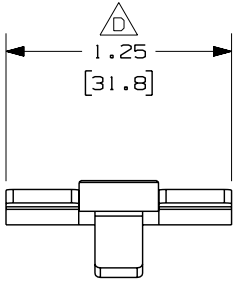
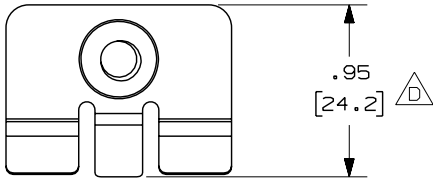
sales@integrated-circuit.com

THIS COPY IS PROVIDED ON A RESTRICTED BASIS AND IS NOT TO BE USED IN ANY WAY DETRIMENTAL TO THE INTERESTS OF PANDUIT CORP.

| | |
|---------------------|----------------------------|
| PANDUIT PART NUMBER | WEIGHT |
| FROMC-X | 0.04 LB/EACH (18g/EACH) |

NOTES:

- SEE CURRENT CATALOG FOR ADDITIONAL PART SUFFIXES TO INDICATE PACKAGE QUANTITY.
- THE FIBERRUNNER QUICK MOUNT CLIP KIT INCLUDES:
TEN (10) CLIP ASSEMBLIES,
TEN (10) 1/4-20x1/2 HEX HEAD CAP SCREWS,
TEN (10) 1/4 HELICAL SPRING LOCKWASHERS.
- FINISH COLOR BLACK (EXCEPT HARDWARE)
- DIMENSIONS IN PARENTHESES ARE IN METRIC.



ENG. REF.: D38241BL_DC_FROMC-X_01.prt

| | | | |
|---|---------------------|---|---|
| CAD FILENAME/LAYERS | | FROMC-X.pdf | |
| <p>PANDUIT CORP TINLEY PARK, ILLINOIS</p> <p>FIBERRUNNER QUICK MOUNT CLIPS (FROMC-X)</p> <p>CUSTOMER DRAWING</p> | | UNLESS OTHERWISE SPECIFIED, DIMENSIONAL TOLERANCES ARE: | |
| | | <p>(.X) ± (.XXX) ±</p> <p>(.XX) ± .03 (.8) ANGLES ±</p> | |
| UNLESS OTHERWISE SPECIFIED, ALL DIMENSIONS ARE GIVEN IN INCHES, THIRD ANGLE PROJECTION. | | SCALE NONE | |
| <p>DRAWN BY JHNU</p> <p>DATE 12-5-01</p> <p>CHK'D HIW</p> | <p>MAT'L: STEEL</p> | | <p>DWG NO. 38241-11</p> <p>DWG SIZE A</p> |

| REV | DATE | BY | CHK | DESCRIPTION | ECN | R | CUST | SUP | GMBH |
|-----|---------|------|-----|---|----------|-----|------|-----|------|
| - | ----- | --- | --- | D. RELOCATED DIMENSIONS C. REVISED PART WEIGHT | ----- | -- | -- | | |
| 2 | 7-12-06 | DTP | RN | B. REVISED GENERAL NOTES A. REVISED CAD FILENAME | 38241-11 | RN | RN | | |
| 1 | 2-12-02 | JHNU | HIW | RELEASED TO PRODUCTION | 38241-11 | HIW | HIW | | |
| R | 12-5-01 | JHNU | HIW | DRAWING RELEASED | | | | | |