

Excellent Integrated System Limited

Stocking Distributor

Click to view price, real time Inventory, Delivery & Lifecycle Information:

[Phoenix Contact](#)
[1600014](#)

For any questions, you can email us directly:

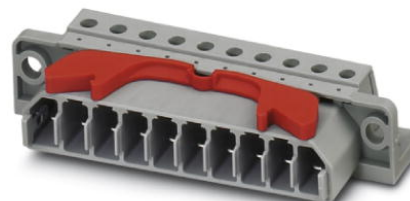
sales@integrated-circuit.com



Extract from the online catalog

HCC 4-M

Order No.: 1600014



<http://eshop.phoenixcontact.de/phoenix/treeViewClick.do?UID=1600014>

Plug, Type of connection: Screw connection, Screw connection, Cross section: 0.2 mm² - 4 mm², AWG 24 - 12, Width: 92 mm, Height: 18 mm, Color: gray, Mounting type: Direct screw connection

Commercial data	
EAN	4017918021740
Pack	50 pcs.
Customs tariff	85366990
Weight/Piece	0.03736 KG
Catalog page information	Page 298 (CL-2009)

Product notes

WEEE/RoHS-compliant since:
01/01/2003



<http://www.download.phoenixcontact.com>
Please note that the data given here has been taken from the online catalog. For comprehensive information and data, please refer to the user documentation. The General Terms and Conditions of Use apply to Internet downloads.

Technical data

Dimensions / positions	
Length	34.2 mm
Height	18 mm
Width	92 mm

HCC 4-M Order No.: 1600014

<http://eshop.phoenixcontact.de/phoenix/treeViewClick.do?UID=1600014>

Technical data

Insulating material group	I
Maximum load current	25 A (with 4 mm ² conductor cross section)
Insulating material	PA
Inflammability class acc. to UL 94	V2

Certificates / Approvals



Certification

BV, CSA, DNV, GL, GOST, LR, UL

CSA

Nominal voltage U _N	300 V
Nominal current I _N	20 A
AWG/kcmil	28-10

UL

Nominal voltage U _N	300 V
Nominal current I _N	20 A
AWG/kcmil	30-10

Accessories

Item	Designation	Description
Plug/Adapter		
1600027	CP-HCC 4	Keying profile for contact inserts, Color: red
3100224	HCC 4-SR	Strain relief, Color: gray

Tools

1205053	SZS 0,6X3,5	Screwdriver, bladed, matches all screw terminal blocks up to 4.0 mm ² connection cross section, blade: 0.6 x 3.5 mm, without VDE approval
---------	-------------	--

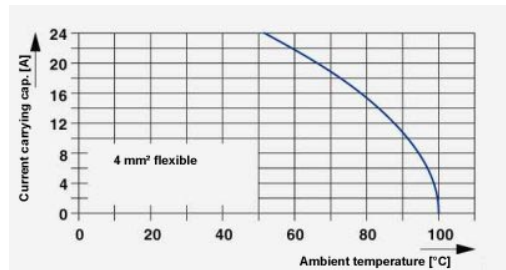
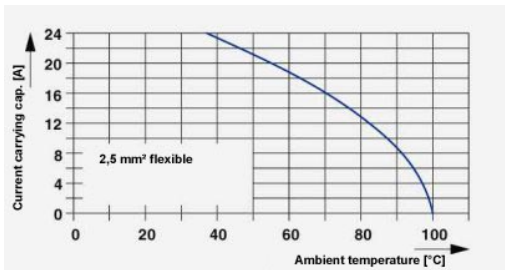
HCC 4-M Order No.: 1600014
<http://eshop.phoenixcontact.de/phoenix/treeViewClick.do?UID=1600014>

Additional products

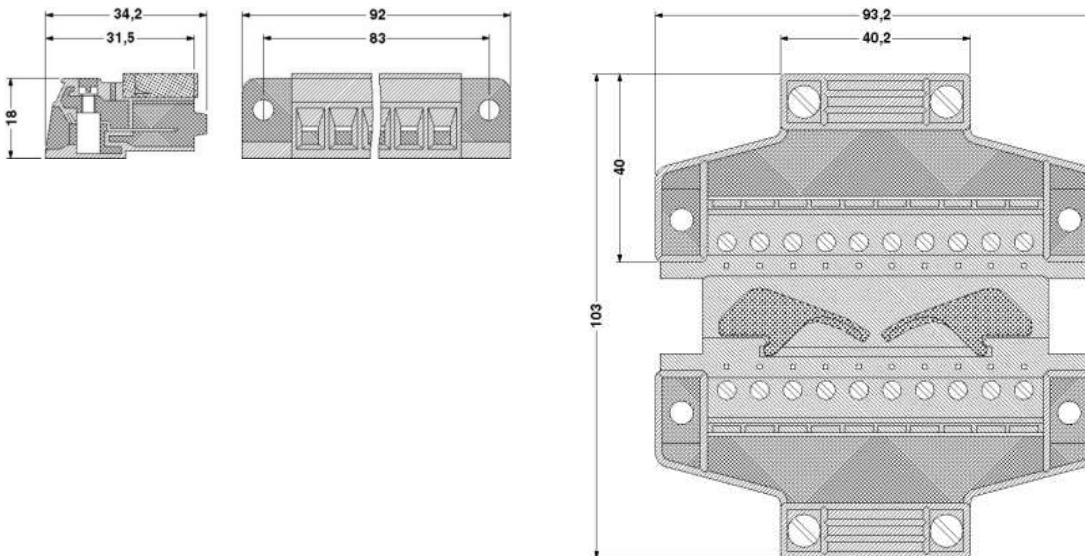
Item	Designation	Description
General		
1600001	HCC 4-F	Female insert, Type of connection: Screw connection, Screw connection, Cross section: 0.2 mm ² - 4 mm ² , AWG 24 - 12, Width: 92 mm, Height: 18 mm, Color: gray

Drawings

Diagram



Dimensioned drawing



HCC 4-M Order No.: 1600014

<http://eshop.phoenixcontact.de/phoenix/treeViewClick.do?UID=1600014>

Address

PHOENIX CONTACT Inc., USA
586 Fulling Mill Road
Middletown, PA 17057, USA
Phone (800) 888-7388
Fax (717) 944-1625
<http://www.phoenixcon.com>



© 2009 Phoenix Contact
Technical modifications reserved;