



Distributor of Phoenix Contact: Excellent Integrated System Limited

Datasheet of 2716305 - Connector Barrier Block Strip 2 Circuit

Contact us: sales@integrated-circuit.com Website: www.integrated-circuit.com

Excellent Integrated System Limited

Stocking Distributor

Click to view price, real time Inventory, Delivery & Lifecycle Information:

[Phoenix Contact](#)
[2716305](#)

For any questions, you can email us directly:

sales@integrated-circuit.com



Extract from the online catalog

G 5/ 2 B

Order No.: 2716305

The illustration shows a combination of versions G 5/2, G 5/3 and G 5/4 in gray



<http://eshop.phoenixcontact.de/phoenix/treeViewClick.do?UID=2716305>

Device terminal block, for direct mounting, 2-pos., bridged, color: orange

Commercial data

EAN	4017918061883
Pack	50 Pcs.
Customs tariff	85369010
Weight/Piece	0.015706 KG
Catalog page information	Page 362 (CL-2007)

Product notes

WEEE/RoHS-compliant since:
01/01/2003



<http://www.download.phoenixcontact.com>
Please note that the data given here has been taken from the online catalog. For comprehensive information and data, please refer to the user documentation. The General Terms and Conditions of Use apply to Internet downloads.

Technical data

General

Number of levels	1
Number of connections	4
Color	orange
Insulating material	PA
Inflammability class acc. to UL 94	V2

G 5/ 2 B Order No.: 2716305

<http://eshop.phoenixcontact.de/phoenix/treeViewClick.do?UID=2716305>

Dimensions

Length	22 mm
Width	20 mm

Technical data

Rated surge voltage	6 kV
Pollution degree	3
Surge voltage category	III
Insulating material group	I
Connection in acc. with standard	IEC 60947-7-1
Nominal current I_N	32 A
Nominal voltage U_N	500 V

Connection data

Conductor cross section solid min.	0.2 mm ²
Conductor cross section solid max.	4 mm ²
Conductor cross section stranded min.	0.2 mm ²
Conductor cross section stranded max.	4 mm ²
Conductor cross section AWG/kcmil min.	24
Conductor cross section AWG/kcmil max	12
Conductor cross section stranded, with ferrule without plastic sleeve min.	0.25 mm ²
Conductor cross section stranded, with ferrule without plastic sleeve max.	4 mm ²
Conductor cross section stranded, with ferrule with plastic sleeve min.	0.25 mm ²
Conductor cross section stranded, with ferrule with plastic sleeve max.	2.5 mm ²
2 conductors with same cross section, solid min.	0.2 mm ²
2 conductors with same cross section, solid max.	1.5 mm ²
2 conductors with same cross section, stranded min.	0.2 mm ²
2 conductors with same cross section, stranded max.	1.5 mm ²
2 conductors with same cross section, stranded, ferrules without plastic sleeve, min.	0.25 mm ²
2 conductors with same cross section, stranded, ferrules without plastic sleeve, max.	1.5 mm ²

G 5/ 2 B Order No.: 2716305

<http://eshop.phoenixcontact.de/phoenix/treeViewClick.do?UID=2716305>

2 conductors with same cross section, stranded, TWIN ferrules with plastic sleeve, min.	0.5 mm ²
2 conductors with same cross section, stranded, TWIN ferrules with plastic sleeve, max.	1 mm ²
Type of connection	Screw connection
Stripping length	8 mm
Internal cylindrical gage	A3
Screw thread	M 3
Tightening torque, min	0.6 Nm
Tightening torque max	0.8 Nm

Certificates / Approvals

Approval logo



CUL

Nominal voltage U _N	300 V
Nominal current I _N	30 A
AWG/kcmil	26-10

UL

Nominal voltage U _N	300 V
Nominal current I _N	30 A
AWG/kcmil	26-10
Certification	CUL, GOST, UL

Accessories

Item	Designation	Description
General		
2720029	WS-G5/2	Warning plate, for the device terminal block G 5, completely covers the surface of the terminal block, 2-pos.
Marking		
1401404	BN WH	Marker pin, unprinted: for individual labeling with M-PEN, lettering field size: 4 x 4 mm

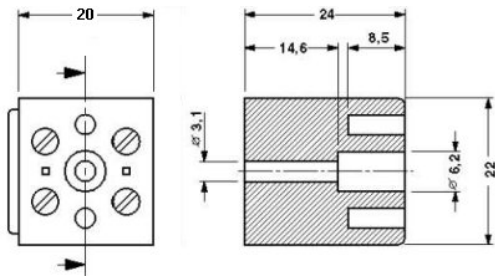
G 5/ 2 B Order No.: 2716305

<http://eshop.phoenixcontact.de/phoenix/treeViewClick.do?UID=2716305>

1401417	BNB WH	Marker pin, plastic, printed: with 1, 2 or 3 digits, please indicate required labeling, color: white
Tools		
1205053	SZS 0,6X3,5	Screwdriver, bladed, matches all screw terminal blocks up to 4.0 mm ² connection cross section, blade: 0.6 x 3.5 mm, without VDE approval

Drawings

Dimensioned drawing



G 5/ 2 B Order No.: 2716305

<http://eshop.phoenixcontact.de/phoenix/treeViewClick.do?UID=2716305>

Address

PHOENIX CONTACT GmbH & Co. KG
Flachsmarktstr. 8
32825 Blomberg, Germany
Phone +49 5235 3 00
Fax +49 5235 3 41200
<http://www.phoenixcontact.de>



© 2008 Phoenix Contact
Technical modifications reserved;