

## Excellent Integrated System Limited

Stocking Distributor

Click to view price, real time Inventory, Delivery & Lifecycle Information:

[Phoenix Contact](#)  
[3200810](#)

For any questions, you can email us directly:

[sales@integrated-circuit.com](mailto:sales@integrated-circuit.com)



Extract from the online catalog

## AI-TWIN 2X 1 - 8 RD

Order No.: 3200810



<http://eshop.phoenixcontact.de/phoenix/treeViewClick.do?UID=3200810>

Ferrule, Length: 15 mm, Color: red

### Commercial data

|                          |                    |
|--------------------------|--------------------|
| EAN                      | 4017918094362      |
| Pack                     | 100 pcs.           |
| Customs tariff           | 85369010           |
| Weight/Piece             | 0.000158 KG        |
| Catalog page information | Page 667 (CL-2009) |

### Product notes

WEEE/RoHS-compliant since:  
03/03/2005



<http://www.download.phoenixcontact.com>  
Please note that the data given here has been taken from the online catalog. For comprehensive information and data, please refer to the user documentation. The General Terms and Conditions of Use apply to Internet downloads.

### Technical data

#### General

|  |        |
|--|--------|
| Length (b)                                   | 15 mm  |
| Color  | red    |
| Material                                     | E-CU   |
| Sleeve length                                | 8 mm   |
| Inner dimension of the insulating collar (d) | 3.4 mm |

AI-TWIN 2X 1 - 8 RD Order No.: 3200810

<http://eshop.phoenixcontact.de/phoenix/treeViewClick.do?UID=3200810>

|                             |         |
|-----------------------------|---------|
| Ferrule diameter            | 2.05 mm |
| Insulating collar thickness | 0.3 mm  |
| Sleeve wall thickness       | 0.15 mm |
| Dimension d3                | 5.4 mm  |

**Certificates / Approvals**

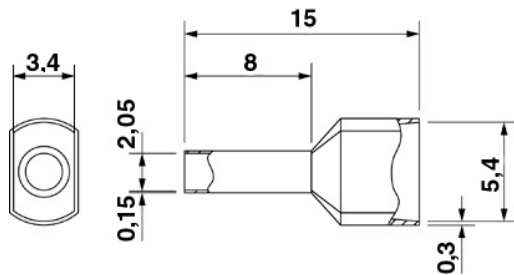


Certification

CSA, UCSA

**Diagrams/Drawings**

Dimensioned drawing



AI-TWIN 2X 1 - 8 RD Order No.: 3200810  
<http://eshop.phoenixcontact.de/phoenix/treeViewClick.do?UID=3200810>

---

**Address**

PHOENIX CONTACT Inc., USA  
586 Fulling Mill Road  
Middletown, PA 17057, USA  
Phone (800) 888-7388  
Fax (717) 944-1625  
<http://www.phoenixcon.com>



© 2010 Phoenix Contact  
Technical modifications reserved;